

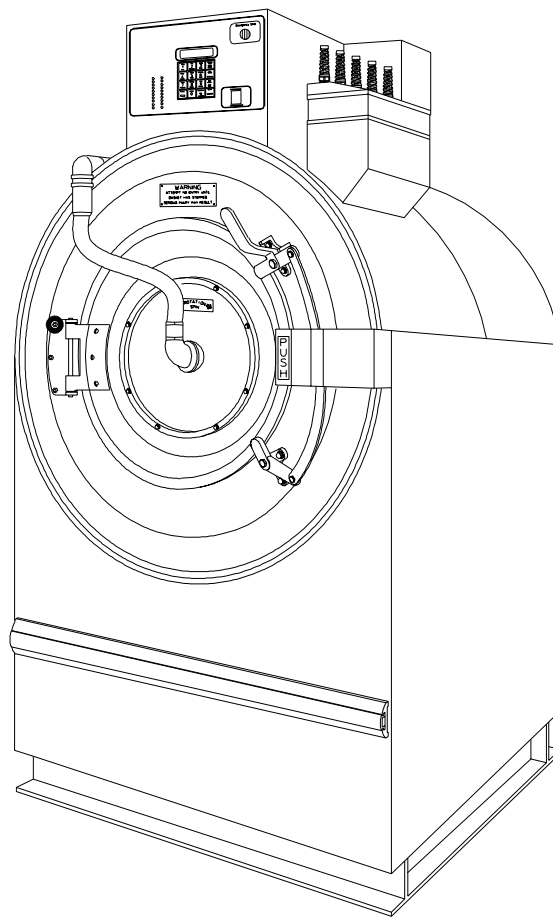
# Washer-Extractors

Pocket Hardmount

UW35

2 Speed and 3 Speed

Parts



# Table of Contents

Title	Page
Parts Ordering Information .....	2
Nameplate Location .....	2
Model Identification .....	3
Decal Familiarization .....	4
Control Module Assembly .....	6
Control Module Detail .....	8
Control Module Detail .....	10
Supply Dispenser .....	12
Supply Dispenser .....	14
Spray and Fill Plumbing .....	16
Spray Plumbing Assembly .....	18
Fill Plumbing Assembly .....	20
Drain Valve and Hose Assembly .....	22
Basket Assembly .....	24
Door and Spray Rinse Assembly .....	26
Door Box Assembly .....	28
Door Box Detail .....	30
Panel Assembly .....	32
Frame Assembly (2 Speed Models) .....	34
Pulley and Trunion Assembly (2 and 3 Speed) .....	36
Motor Assembly .....	38
Parts Index .....	41

© Copyright 2000, Alliance Laundry Systems LLC

All rights reserved. No part of the contents of this book may be reproduced or transmitted in any form or by any means without the expressed written consent of the publisher.

# Parts Ordering Information

Alliance Laundry Systems is not responsible for personal injury or property damage resulting from improper service. Review all service information before beginning repairs.

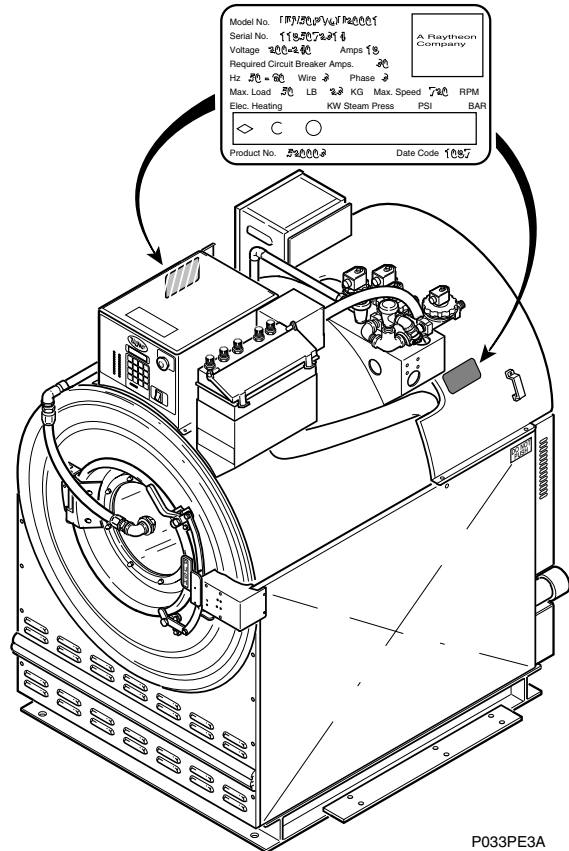
If literature or replacement parts are required, contact the source from whom the machine was purchased or contact Alliance Laundry Systems at (920) 748-3950 for the name of the nearest authorized parts distributor.

For technical assistance, call any of the following numbers:

(850) 718-1035  
(850) 718-1026  
Marianna, Florida  
  
(920) 748-3121  
Ripon, Wisconsin

## Nameplate Location

When calling or writing about your product, be sure to mention model and serial numbers. Model and serial numbers are located on nameplate(s) as shown.



## Model Identification

Information in this manual is applicable to these washer-extractors:

UW35M2

UW35M3

UW35P2

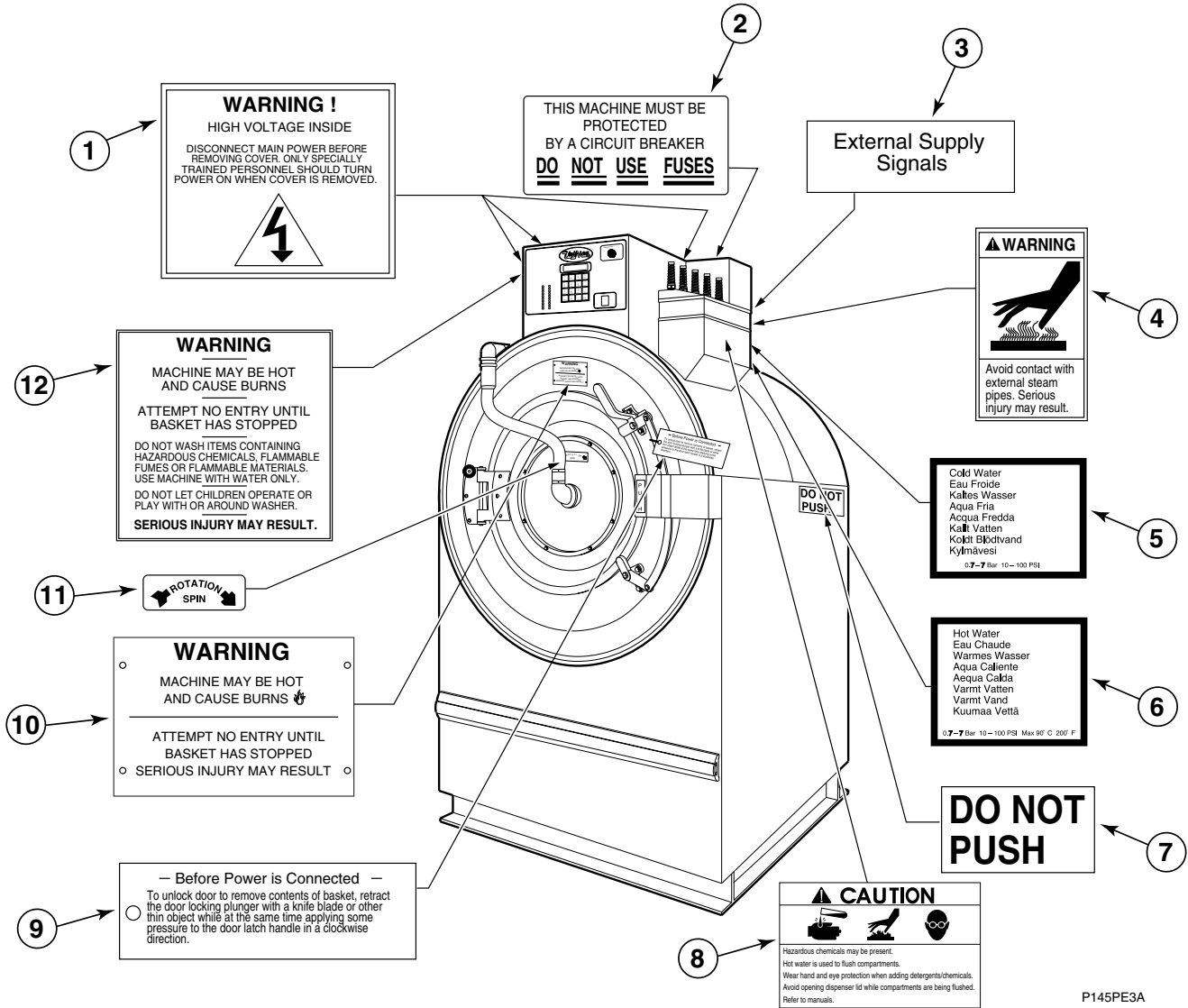
UW35P3

UW35S2

UW35S3



# Decal Familiarization



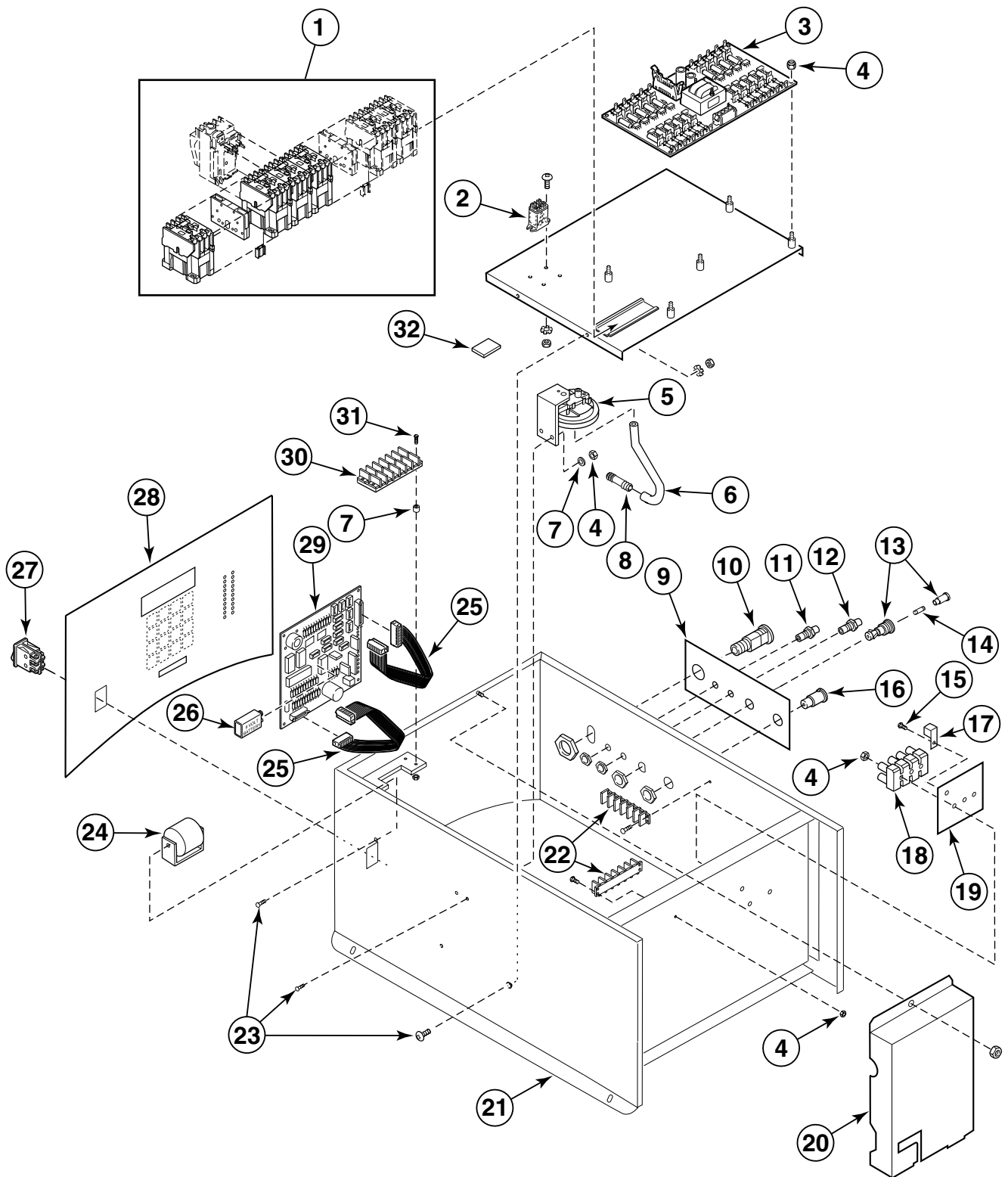
P145PE3A

# Decal Familiarization

REF	PART #	DESCRIPTION	COMMENTS
1	F230206	Decal	
2	F230301	Decal	
3	F230911-1	Decal	
4	F231380	Decal	
5	F231368	Decal	
6	F231367	Decal	
7	F230302	Decal	
8	F230931	Decal	
9	F230501	Decal	
10	F230218	Decal	
11	F230652	Decal	
12	F231065	Decal	

# Control Module Assembly

UW35P Models Only



P140PE3B



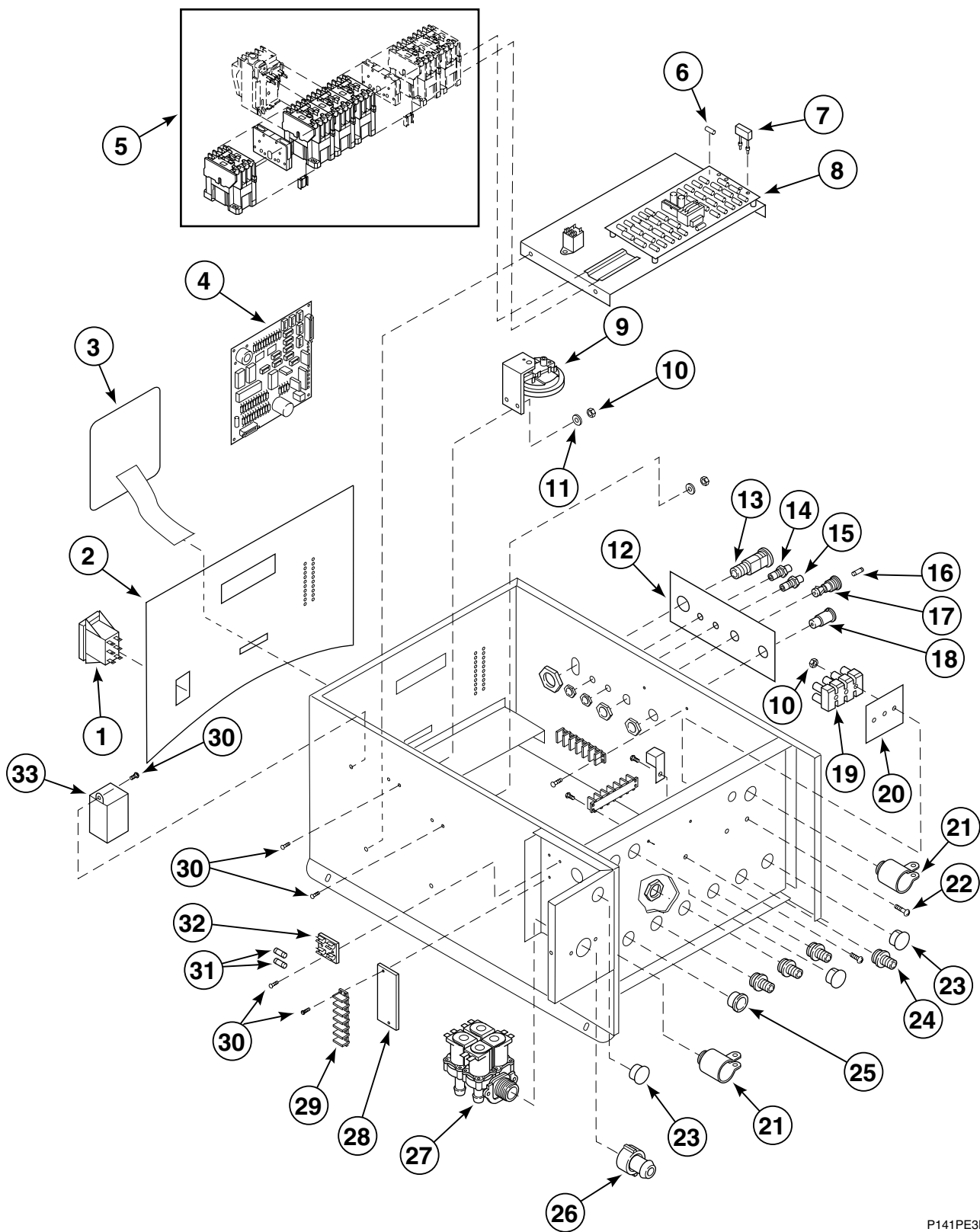
# Control Module Assembly

UW35P Models Only

REF	PART #	DESCRIPTION	COMMENTS
1	F330146	Contactors	120 Volt; 3 each in P2 models, 5 each in P3 single drop models, 2 each in P3 dual drop models
	F330147	Contactors	220 Volt
	F330148	Contactors	120 Volt, 24 Amp; 2 each in P3 dual drop models
	F330152	Contactors	Mechanical interlock; 1 in P2 models, 2 in P3 single drop models
2	F330227	Relay	120 Volt
	F330230	Relay	230 Volt
3	F370444	Solid State Fuse/Relay Board	
4	F431022	Nut	
5	F340315	Dual Level Switch	
6	F422404	Tubing	PVC; Sold per foot
7	F431113	Washer	
8	F422500	Union	
9	F231560	Decal	WE-6 programmable microcomputer
10	F730186	Keymode Switch	
11	F140575	Feed-thru Connector	Gray
12	F140576	Feed-thru Connector	Blue
13	F350304	Fuse Holder	
14	F350104	Fuse	2 Amp
15	F430903	Screw	
16	F350412	Light	Red; 115 Volt
	F350414	Light	Red; 220 Volt
17	F140734	Ground Lug	
18	F140746	Input Power Terminal Block	
19	F230677	Decal	Input Power
20	F606826	Cover	
21	F604711-1	Control Module Cabinet Subassembly	
22	F140738	Terminal Strip	
23	F430928	Screw	
24	F300203	Buzzer	120 Volt
	F300202	Buzzer	220 Volt
25	F140219	Ribbon Cable	
26	F191101	Battery	
27	F340409	Switch Boot	
28	F230721	Decal	Module front
29	F370534-00	WE-6 Microcomputer	
30	F141870	Terminal Connector	
31	F430916	Screw	
32	F330217	RC Network Filter	

# Control Module Detail

UW35S Models Only



P141PE3B

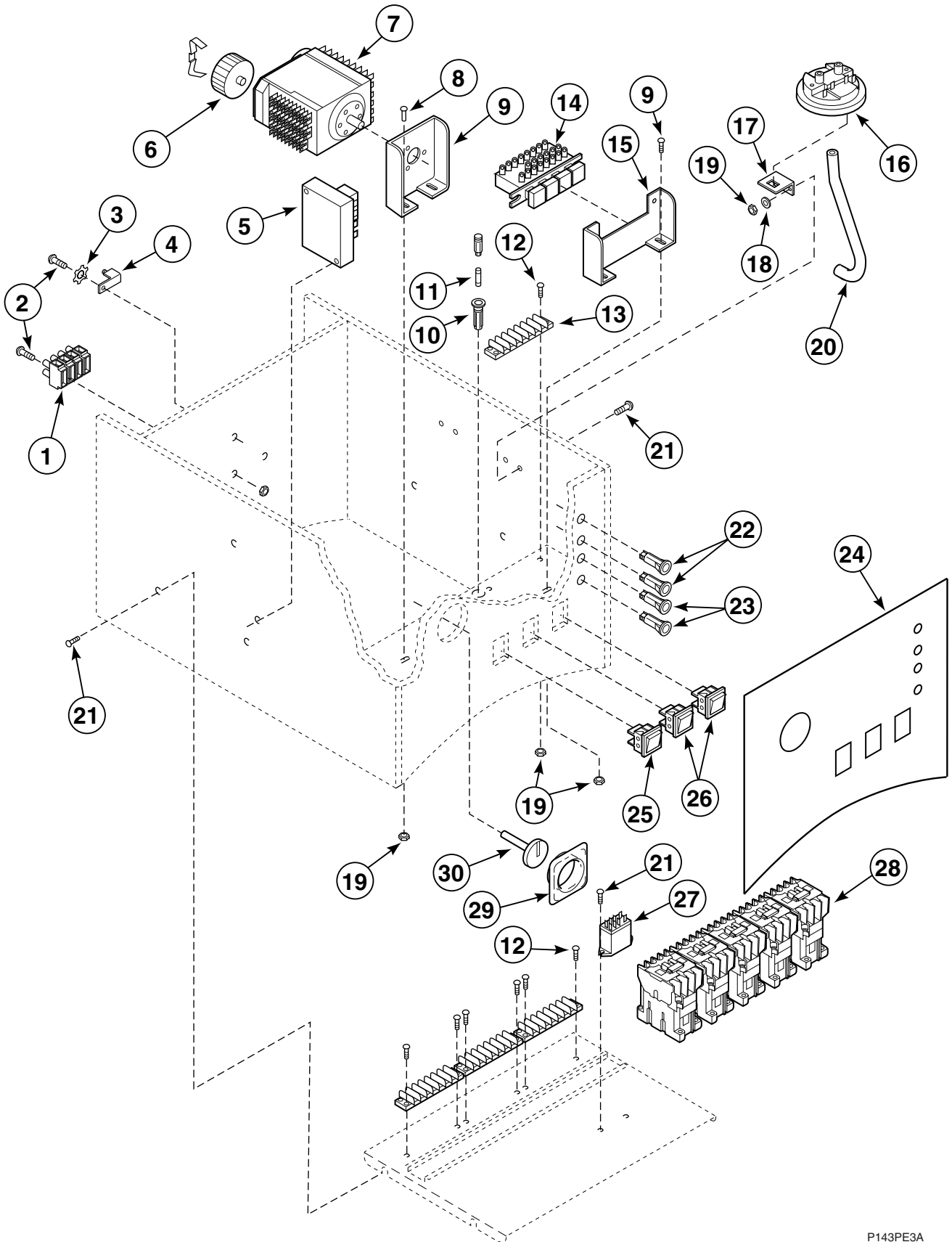
# Control Module Detail

UW35S Models Only

REF	PART #	DESCRIPTION	COMMENTS
	F370449	Output Board	120 Volt
	F370450	Output Board	220 Volt
1	F340412	Door Unlock Switch	
2	F230721	Decal	Module front
3	F230724	Decal	Keypad
4	F370555-00	S-Series Computer	
5	F330146	Contactor	120 Volt
	F330147	Contactor	220 Volt
	F330148	Contactor	120 Volt/24 Amp; 2 each in S3 dual drop models
	F330152	Contactor	Mechanical interlock, 1 in S2 models, 2 in S3 single drop models
6	F350108	Fuse	1/8 Amp, Slo-Blo
	F350109	Fuse	1/2 Amp; Fast
	F350110	Fuse	1 Amp; Slo-Blow
7	F330217	RC Network Filter	
8	F370449	Solid State Fuse/Relay Board	120 Volt
	F370450	Solid State Fuse/Relay Board	220 Volt
9	F340315	Water Level Switch	
10	F431022	Nut	
11	F431113	Washer	
12	F230678	Decal	Keymode
13	F730186	Keymode Switch	
14	F140575	Feed-thru Connector	Gray
15	F140576	Feed-thru Connector	Blue
16	F350104	Fuse	2 Amp
17	F350304	Fuse Holder	
18	F350400	Light	Red
19	F140746	Input Power Terminal Block	
20	F230677	Decal	
21	F140311	Connector	
22	F430916	Screw	
23	F140527	Plug	
24	F140309	Connector	
25	F140909	Bushing	
26	F200302	Connector	Hot water
27	F380715	4-way Supply Valve	110-127 Volt
	F380725	4-way Supply Valve	200-240 Volt
28	F230622	Decal	
29	F140738	Terminal Strip	
30	F430928	Screw	
31	F350115	Fuse	3 Amp
32	F350312	Dual Fuseholder	
33	F300200	Buzzer	120 Volt

# Control Module Detail

UM35M Models Only



P143PE3A

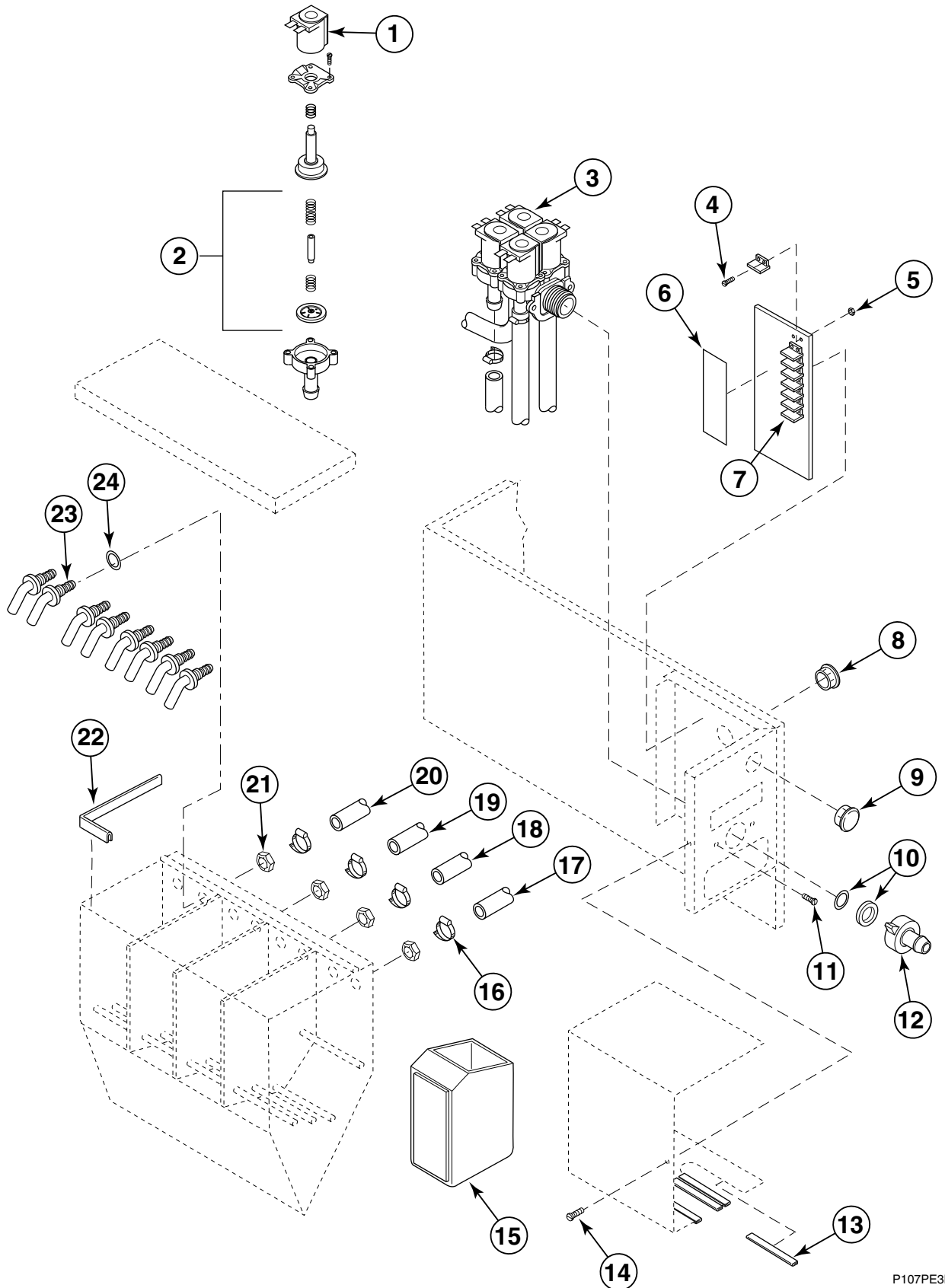
# Control Module Detail

UM35M Models Only

REF	PART #	DESCRIPTION	COMMENTS
	F360124	Transformer	
1	F140746	Power Input Block	
2	F430903	Screw	
3	F431113	Washer	
4	F140734	Ground Lug	
5	F330234	Time Delay Relay	30 second, 120 Volt
	F330235	Time Delay Relay	30 second, 230 Volt
6	F160539	Timer Motor	110 Volt
	F160538	Timer Motor	220 Volt
7	F160301	Timer	120 Volt
	F160304	Timer	220 Volt
8	F430928	Screw	
9	F604214	Timer Mounting Bracket	
10	F350304	Fuse Holder	
11	F350104	Fuse	2 Amp; Fast
12	F430916	Screw	
13	F140738	Terminal Strip	
14	F340442	Cycle Selector Switch	
15	F604213	Switch Mounting Bracket	
16	F340328	Water Level Switch	
17	F630242	Water Level Switch Bracket	
18	F430311	Washer	
19	F431022	Nut	
20	F422404	Tubing	Sold per foot
21	F430922	Screw	
22	F350412	Light	Red; 110 Volt
	F350414	Light	Red; 220 Volt
23	F350411	Light	Yellow; 110 Volt
	F350413	Light	Yellow; 220 Volt
24	F230721	Control Module Decal	
25	F340411	On/Off Switch	
26	F340412	Door Unlock/Start Switch	
27	F330227	Flange Relay	110 Volt
	F330230	Flange Relay	220 Volt
28	F330146	Contacto	110 Volt
	F330147	Contacto	220 Volt
29	F150310	Dial Indicator Cover	
30	F150370	Indicator Dial	

# Supply Dispenser

Old Style



P107PE3B

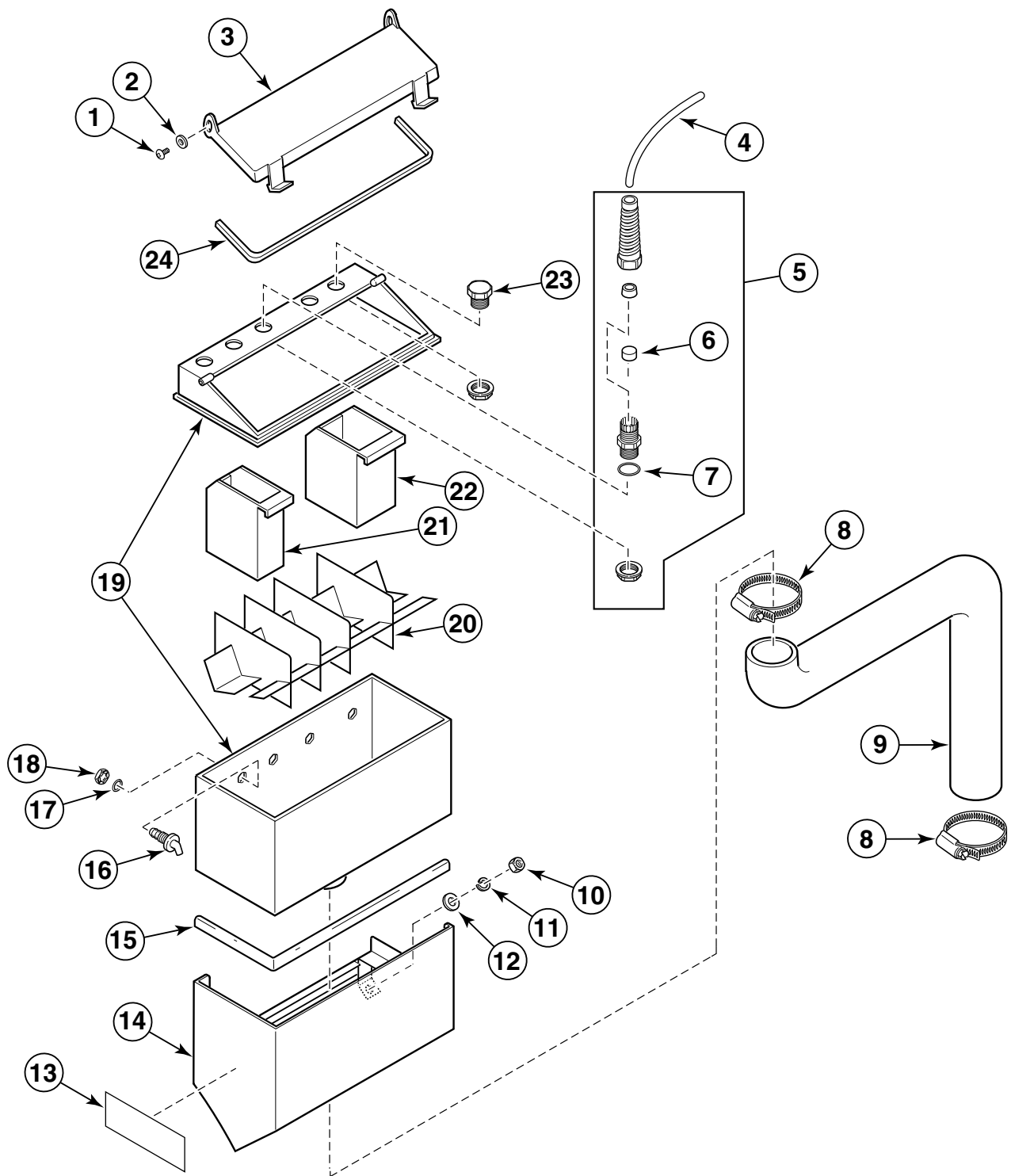
# Supply Dispenser

Old Style

REF	PART #	DESCRIPTION	COMMENTS
	F730168	Supply Nozzle Kit	Includes items 21, 23 and 24
1	F380900	Mueller Valve Coil	110 Volt/50/60 Hertz
	F380917	Mueller Valve Coil	220 Volt
2	F380938	4-Way Valve Repair Kit	
3	F380715	4-Way Supply Valve	110/120 Volt/50/60 Hertz
	F380725	4-Way Supply Valve	220 Volt
4	F430916	Screw	
5	F431022	Nut	
6	F230622	Decal	
7	F140738	Terminal Block	
	F140776	Terminal Block	2 and 3 speed
8	F140909	Insulator Bushing	
9	F140527	Plug	
10	F380106	Flow Restrictor	8 Liter
11	F430948	Screw	
12	F200302	Connector	Hot water
13	F170402	Trim	Sold per foot
14	F430152	Screw	
15	F603411	Supply Cup	
16	F200202	Clamp	
17	F610196	Hose	Sold per foot, 12"
18	F200110	Hose	Sold per foot
19	F610086	Hose	Sold per foot, 18-1/2"
20	F610088	Hose	Sold per foot, 23"
21	F430224	Nut	
22	F170400	Trim	Sold per foot
23	F380300	Nozzle	
24	F170208	O-Ring	

# Supply Dispenser

New Style



U062PE3C



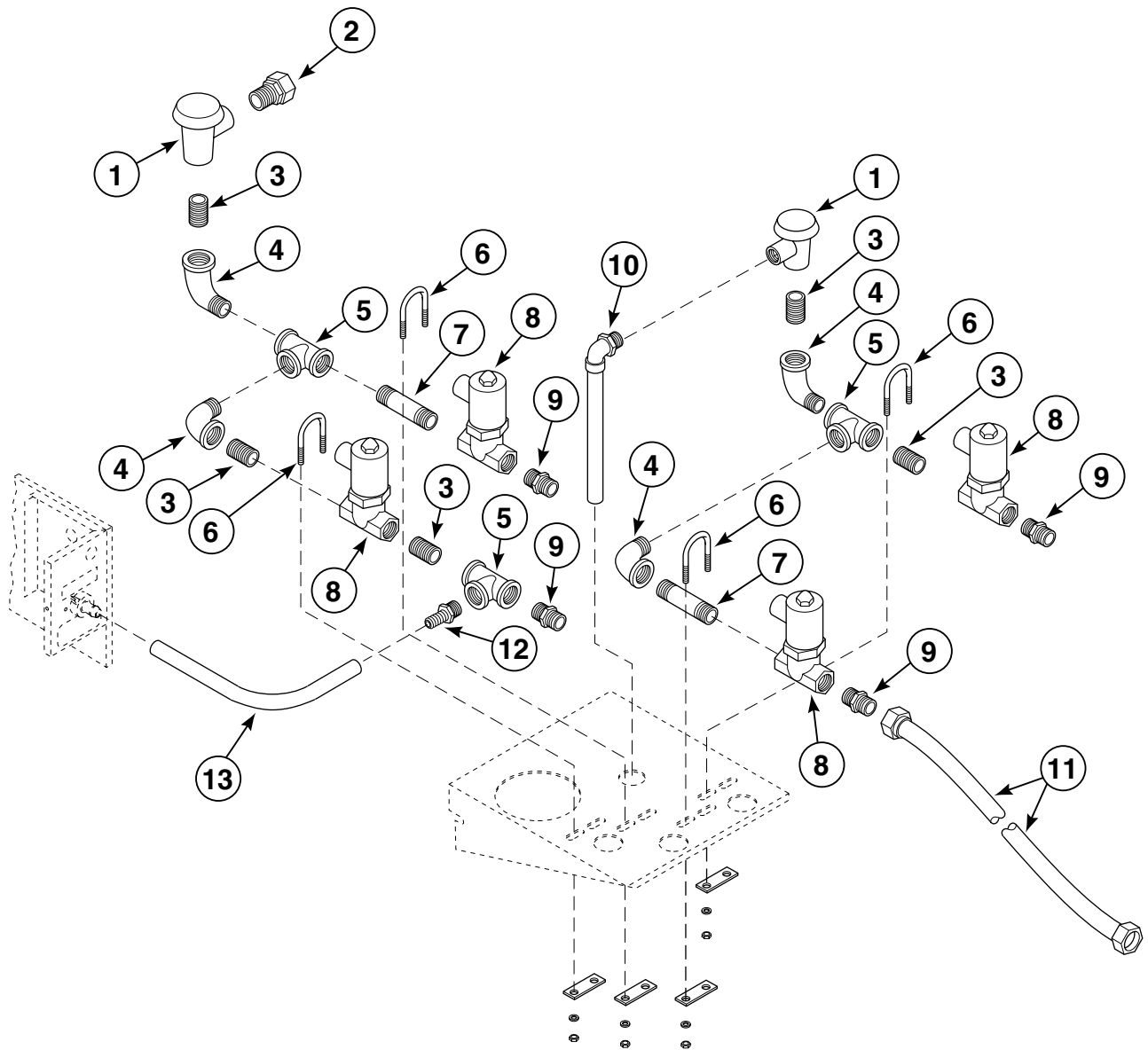
# Supply Dispenser

New Style

REF	PART #	DESCRIPTION	COMMENTS
	F730168	Soap Injection Nozzle Kit	Includes items 16-18
1	F430917	Screw	
2	F431133	Washer	#10
3	F150384	Supply Dispenser Lid	
4	F150390	Tubing	Sold per foot
	F140905	Tubing	2 speed; Sold per foot
5	F749802	Strain Relief Connector Assembly	Includes F140340 Nut
6	F170165	Strain Relief Plug	
7	F170215	O-Ring	
8	F200213	Clamp	#40
9	F150478	Hose	
10	F431005	Nut	
11	F431100	Lockwasher	
12	F431147	Washer	
13	F231020	Decal	
14	F633032	Soap Dispenser Shroud	
15	F170400	Trim	Sold per foot
16	F380300	Supply Nozzle	
17	F170208	O-Ring	
18	F430224	Supply Nozzle Nut	
19	F150383	Supply Polypropylene Dispenser	
20	F150388	Dry Supply Insert	
21	F150385	Chemical Supply Cup	20 ounces
22	F150386	Chemical Supply Cup	32 ounces
23	F190304	Plug Cap	
24	F170158	Soap Dispenser Lid Gasket	Sold per foot

# Spray and Fill Plumbing

Old Style



P043Pe3a

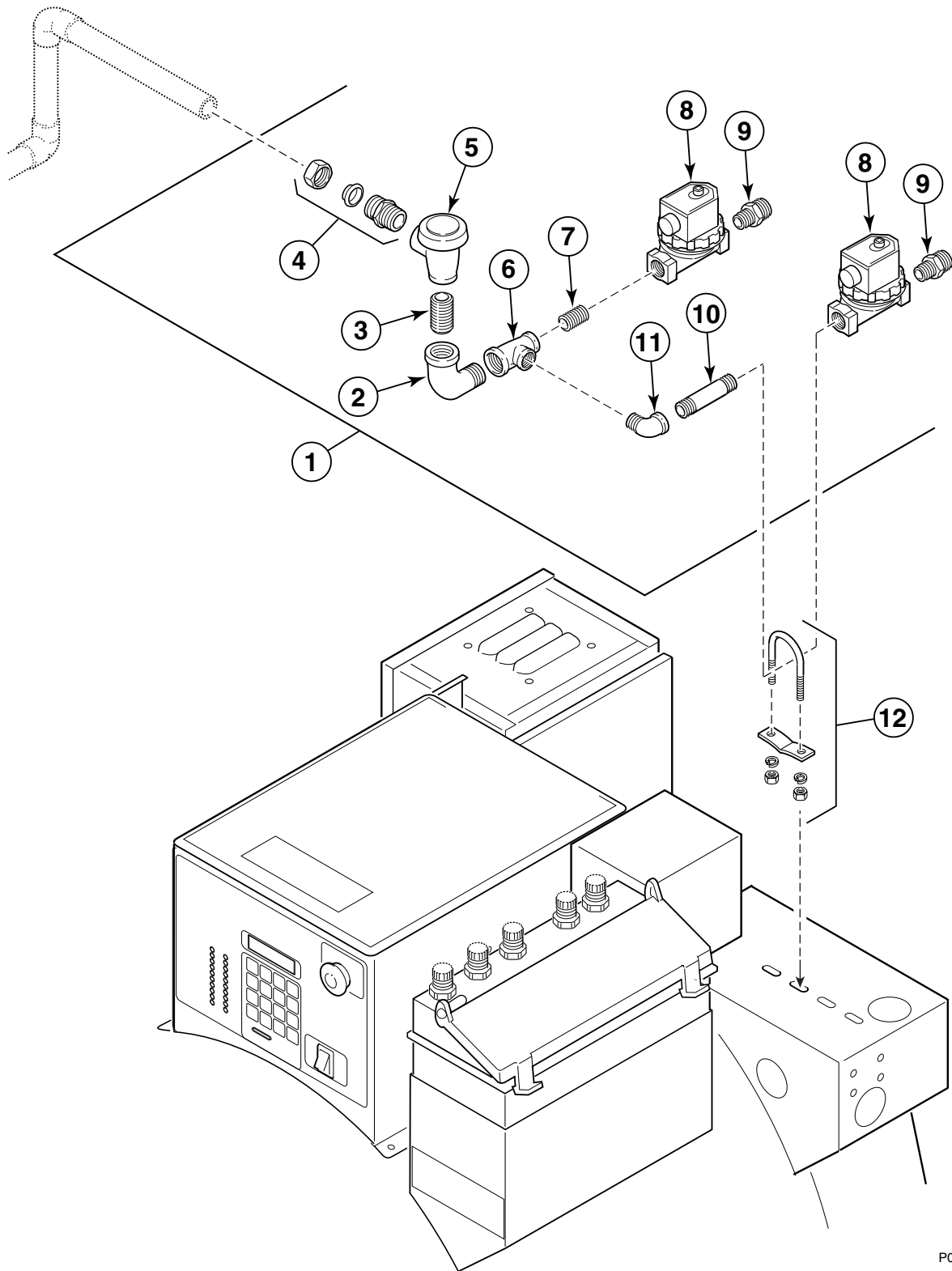
# Spray and Fill Plumbing

Old Style

REF	PART #	DESCRIPTION	COMMENTS
1	F380800	Vacuum Breaker	
2	F422106	Connector	
3	F420105	Nipple	
4	F420502	Elbow	
5	F420401	Tee	
6	F200401	Clamp	#5; Includes hardware
7	F420103	Nipple	
8	F380700	Solenoid Valve	Hays, 120 Volt
	F380701	Solenoid Valve	Hays, 240 Volt
9	F421908	Adapter	
10	F603696-7	Top Fill Tube Assembly	
11	F200164	Fill Hose	
12	F421930	Hose Barb	
13	F200199	Hose	Sold per foot

# Spray Plumbing Assembly

New Style



P001PE3B

# Spray Plumbing Assembly

New Style

REF	PART #	DESCRIPTION	COMMENTS
	F380993	Spray Valve Repair Kit	Each valve requires one (1) Repair kit
1	F633150	Spray Plumbing Assembly	120 Volt
	F633150-1	Spray Plumbing Assembly	220 Volt
	F633150-2	Spray Plumbing Assembly	120 Volt with brass option
	F633150-3	Spray Plumbing Assembly	220 Volt with brass option
	F633150-4	Spray Plumbing Assembly	120 Volt with G-threads
	F633150-5	Spray Plumbing Assembly	220 Volt with G-threads
	F633150-6	Spray Plumbing Assembly	120 Volt with G-threads and brass option
	F633150-7	Spray Plumbing Assembly	220 Volt with G-threads and brass option
2	F420502	Elbow	
3	F420105	Nipple	
4	F422106	Tube Connector	
5	F380800	Vacuum Breaker	
6	F420401	Tee	
7	F420101	Nipple	
8	F381702	Spray Valve	110 Volt w/DIN
9	F421908	Hose Adapter	
10	F420103	Nipple	
11	F420500	Street Elbow	
12	F200401	U-Bolt	#5

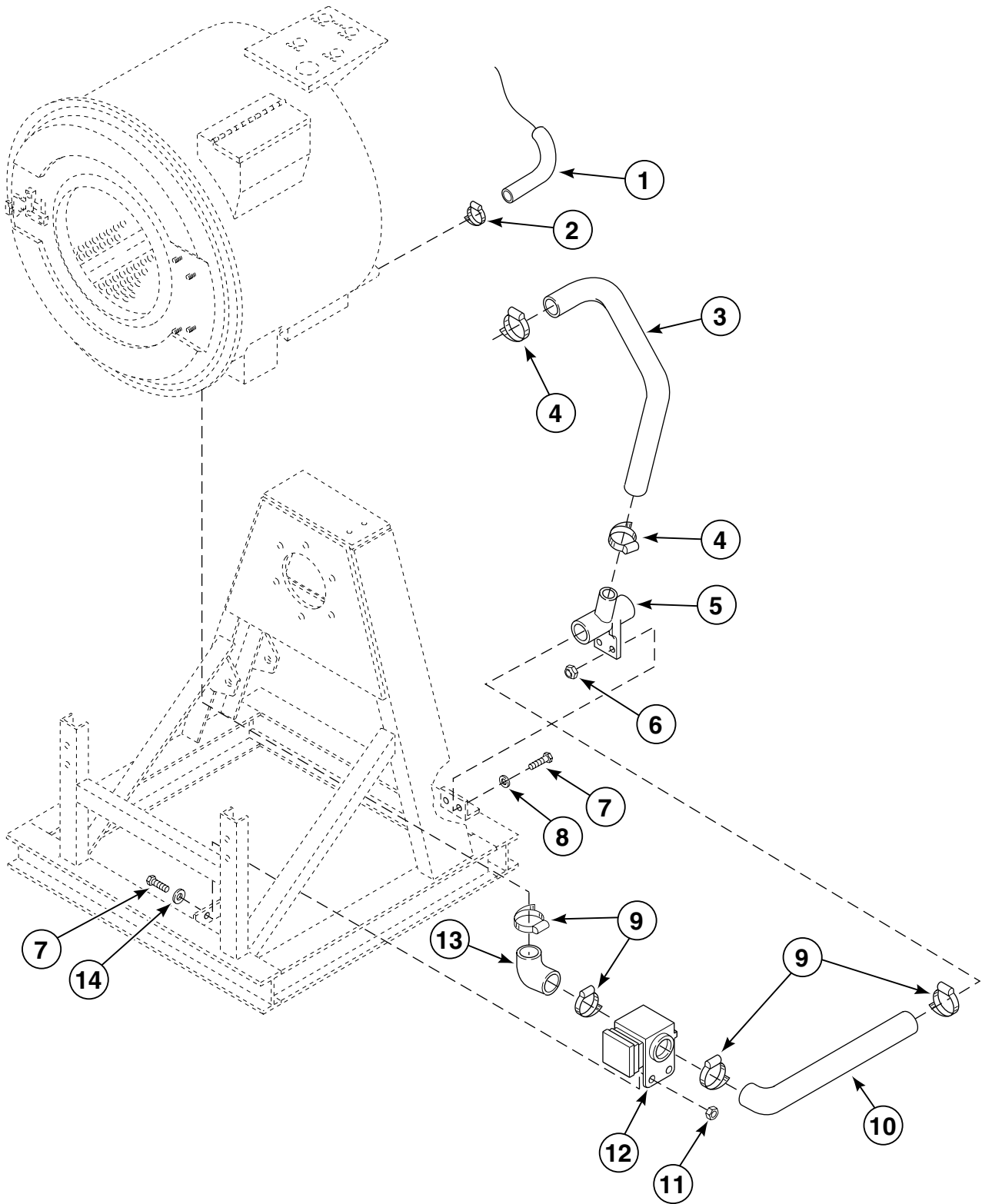


# Fill Plumbing Assembly

New Style

REF	PART #	DESCRIPTION	COMMENTS
	F380991	Spray Valve Repair Kit	Each valve requires one (1) Repair kit
1	F420502	Elbow	
2	F420105	Nipple	
3	F380702	Fill Valve	120 Volt
4	F420400	Tee	
5	F420408	Plug	
6	F421909	Hose Adapter	
7	F380800	Vacuum Breaker	
8	F420509	Elbow	
9	F421951	Hose Barb	
10	F421908	Adapter	
11	F420500	Street Elbow	
12	F380500	Gate Valve	
13	F420101	Nipple	
14	F420103	Nipple	
15	F200206	Hose Clamp	#10
16	F605793	Fill Tube	
17	F200401	U-Bolt	Connects to supply valve
18	F200222	Hose Clamp	Includes hardware
19	F421202	Bottom Fill Tube Assembly	Sold per foot

# Drain Valve and Hose Assembly



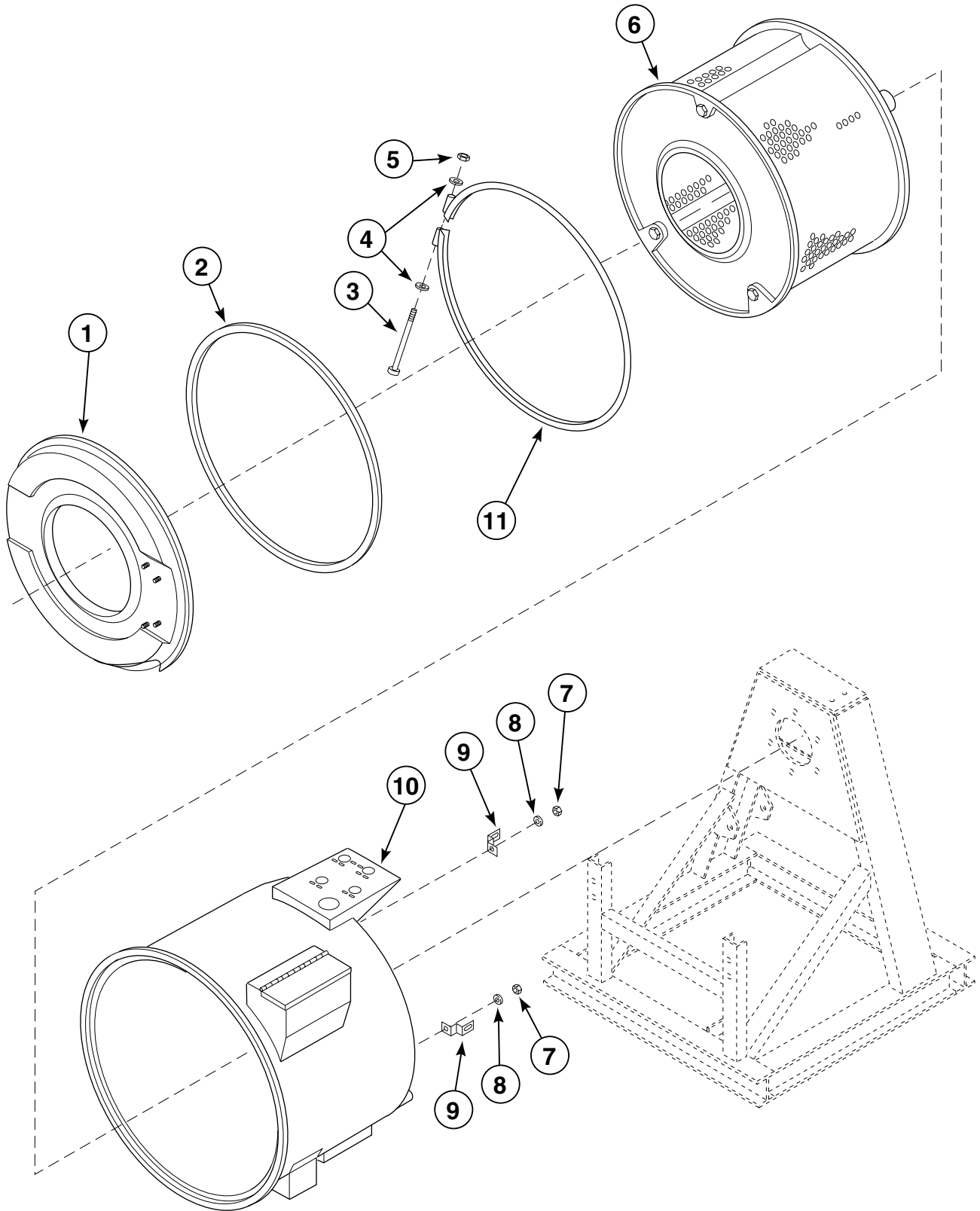
P036PE3A



## Drain Valve and Hose Assembly

REF	PART #	DESCRIPTION	COMMENTS
1	F200142	Air Trap	
2	F200214	Clamp	
3	F150353	Overflow Hose	
4	F200215	Clamp	#28
5	F150318	Drain Tee	
6	F431005	Nut	
7	F430103	Bolt	
8	F431147	Washer	
9	F200213	Clamp	#40
10	F150331	Drain Hose	Drain valve to drain tee
11	F430211	Nut	
12	F380618	Drain Valve Assembly	110 Volt
	F380619	Drain Valve Assembly	220 Volt
13	F150312	Drain Hose	Front outer tub to drain valve
14	F430305	Washer	

# Basket Assembly



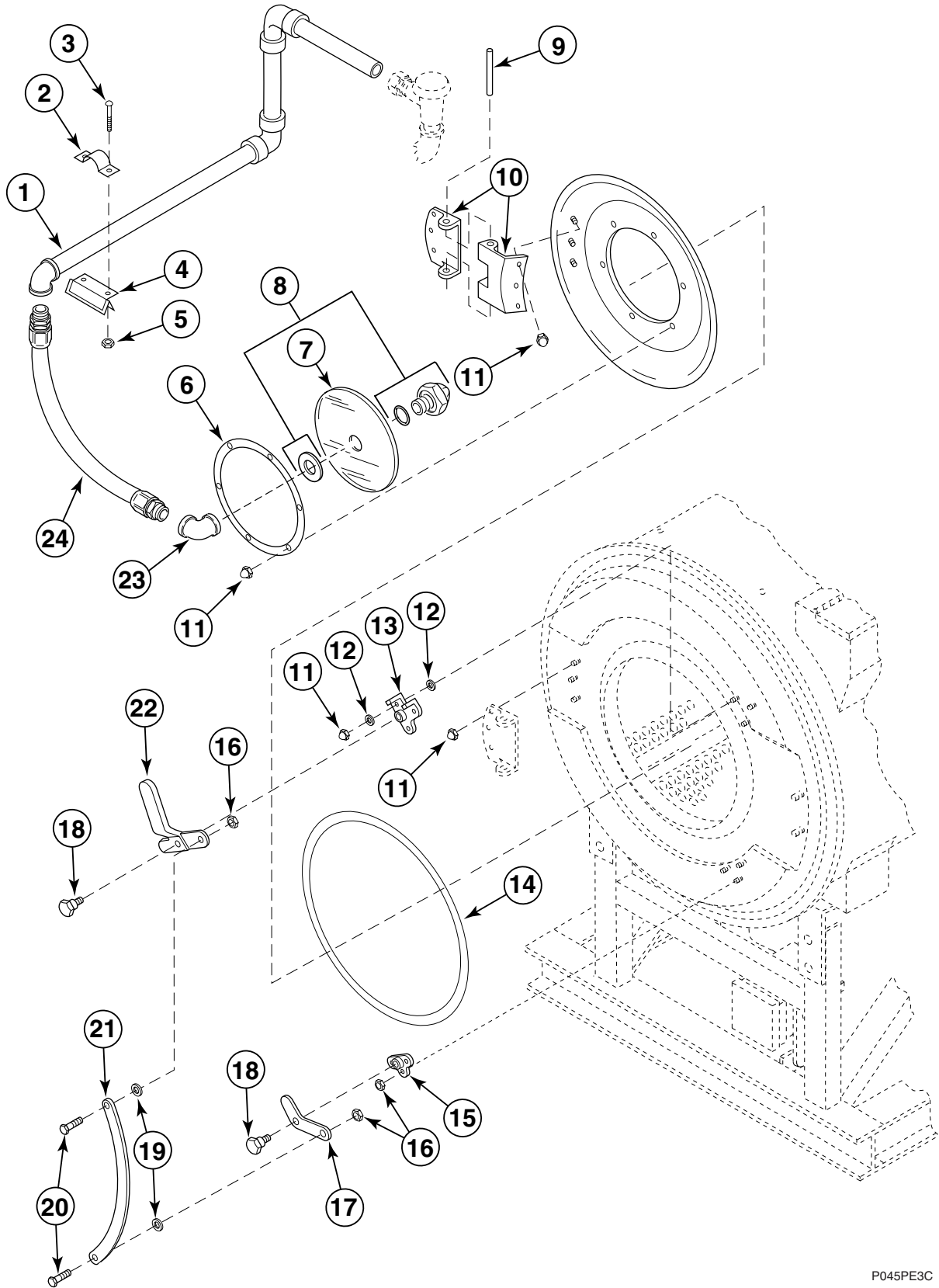
P037PE3B

# Basket Assembly

REF	PART #	DESCRIPTION	COMMENTS
1	F603692	Shell Assembly	
2	F607042-2	Shell Gasket	Sold per foot; 87.5"
3	F430500	Bolt	
4	F430317	Washer	
5	F431005	Nut	
6	F603225-1	Basket Assembly	2 speed
	F604129	Basket Assembly	3 speed
7	F430205	Nut	
8	F430301	Washer	
9	F601806	Shell Mounting Bracket	
10	F603691	Shell Assembly †	2 speed; steam
	F604125	Shell Assembly †	2 speed; electric heat
	F604126	Shell Assembly †	3 speed; steam
	F604128	Shell Assembly †	3 speed; electric heat
	F634508	Shell Assembly †	2 speed; steam
	F634510	Shell Assembly †	3 speed; steam
	F633964-1	Shell Assembly †	2 speed; electric heat
	F634082-1	Shell Assembly †	3 speed; electric heat
11	F603229-1	Shell Band Assembly	

†Denotes Shells used with Old Style Stainless Steel Supply Dispenser.

# Door and Spray Rinse Assembly

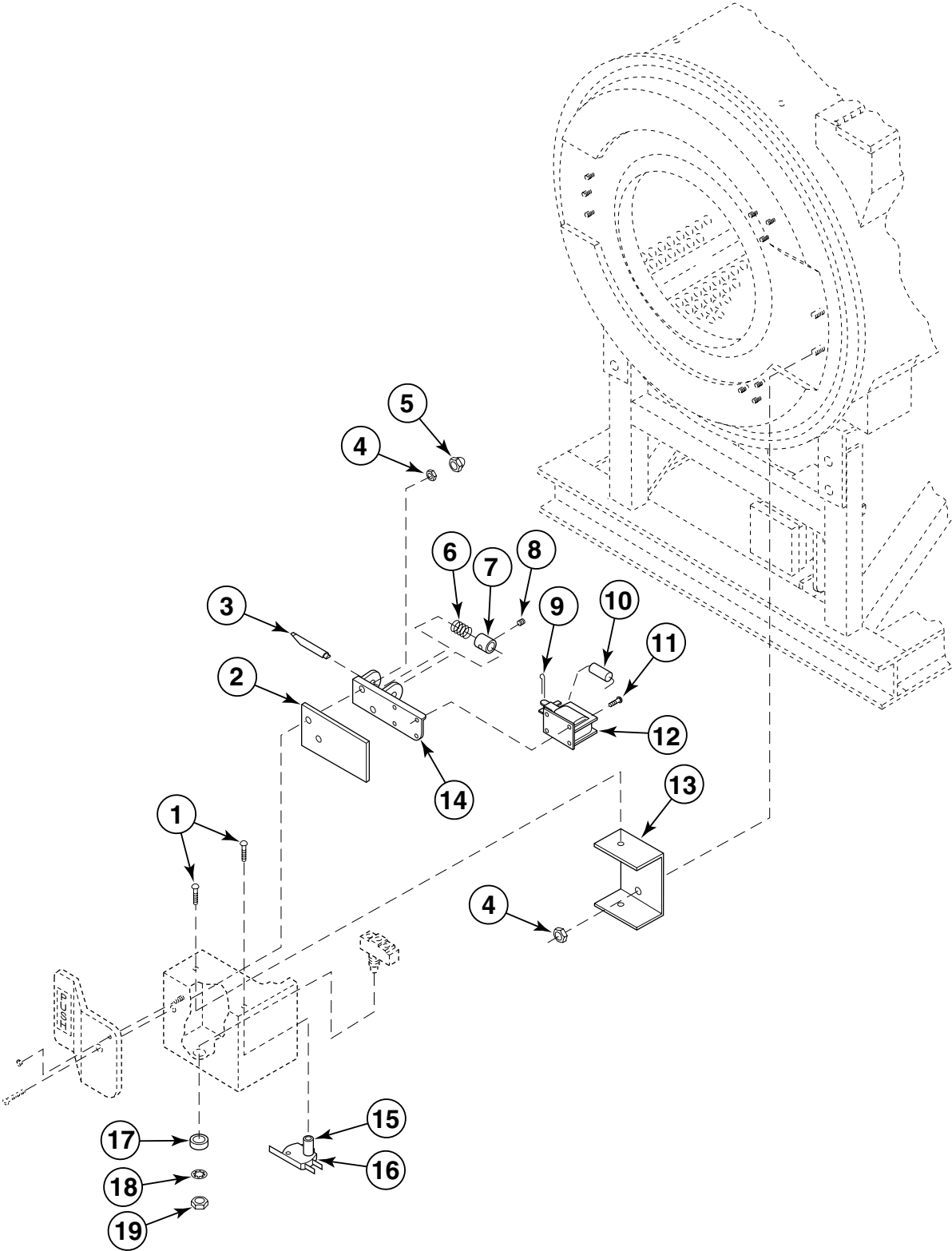


P045PE3C

## Door and Spray Rinse Assembly

REF	PART #	DESCRIPTION	COMMENTS
	F603693	Door Assembly	With spray rinse
	F630492	Door Assembly	Without spray rinse
<b>1</b>	F603696-7	Spray Tube Assembly	
<b>2</b>	F602880	Tube Holding Clamp	
<b>3</b>	F430917	Screw	
<b>4</b>	F602901	Clamp Shell Band Bracket	
<b>5</b>	F431022	Nut	
<b>6</b>	F320100	Retainer Ring	
<b>7</b>	F290200	Door Glass	
<b>8</b>	F730077	Spray Rinse Nozzle Kit	Includes hardware
<b>9</b>	F601815	Door Hinge Pin	
<b>10</b>	F601045	Door Hinge	
<b>11</b>	F431026	Cap Nut	
<b>12</b>	F431100	Washer	
<b>13</b>	F150201	Top Door Latch Bracket	
<b>14</b>	F170143	Door Gasket	
<b>15</b>	F150202	Lower Door Latch Bracket	
<b>16</b>	F430205	Nut	
<b>17</b>	F150204	Lower Door Latch	
<b>18</b>	F430168	Bolt	
<b>19</b>	F431118	Washer	
<b>20</b>	F430927	Bolt	
<b>21</b>	F746800	Extension Arm Kit	
<b>22</b>	F150203	Door Handle	
<b>23</b>	F422319	Elbow	
<b>24</b>	F730025	Spray Rinse Hose Kit	

# Door Box Assembly

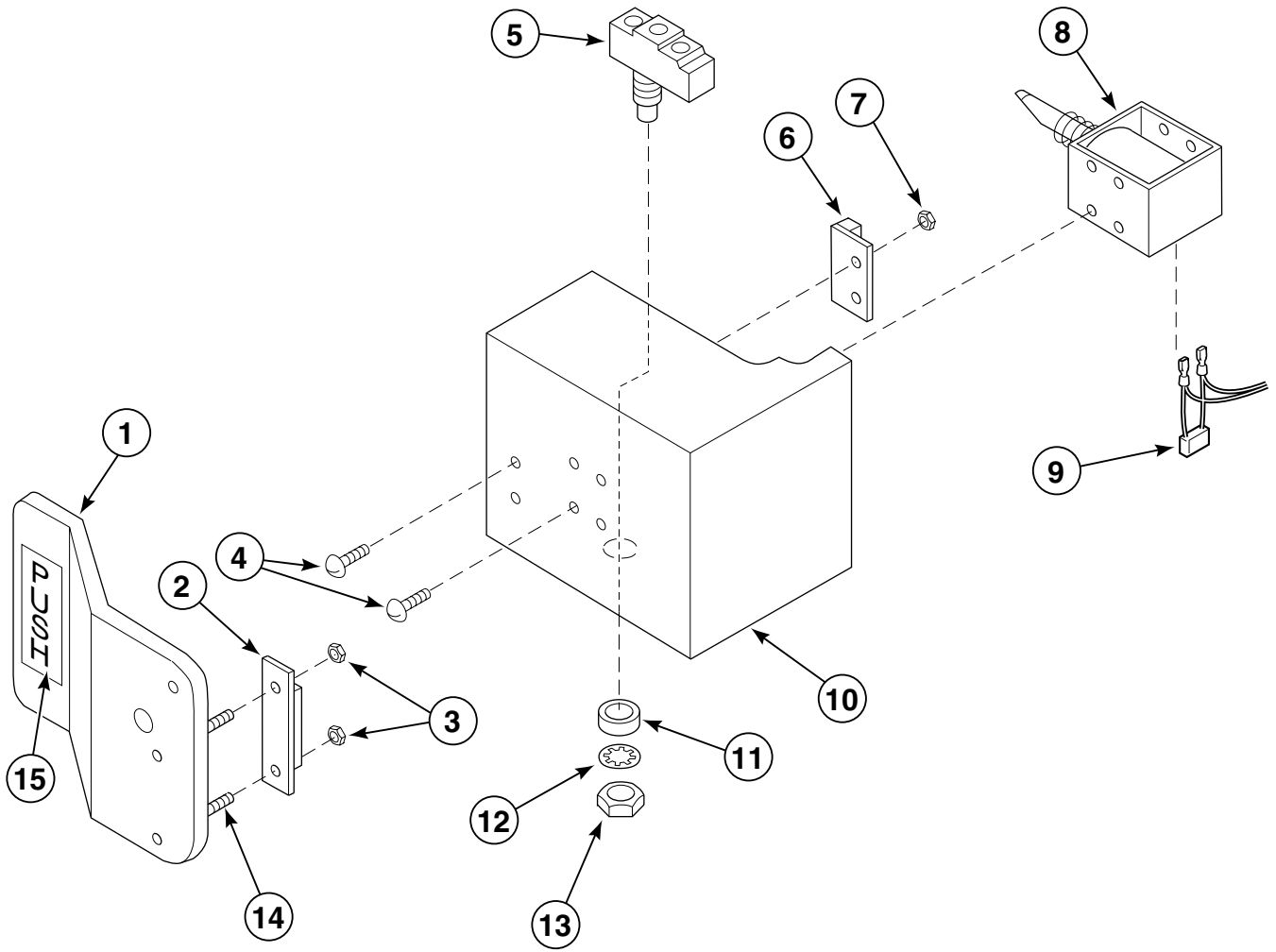


P108PE3C

# Door Box Assembly

REF	PART #	DESCRIPTION	COMMENTS
1	F430988	Screw	
2	F170135	Gasket	
3	F601081	Plunger	
4	F430211	Nut	
5	F190300	Cap	
6	F300119	Spring	
7	F601190	Set Coller	
8	F430502	Screw	
9	F431201	Pin	
10	F330217	RC Network Filter	
11	F430917	Screw	
12	F300118	Door Release Solenoid	120 Volt
	F300119	Door Release Solenoid	220 Volt
13	F601129	Door Box Mounting Bracket	
14	F605525	Bracket	
15	F431914	Spacer	
16	F340702	Magnetic Switch	
17	F601055	Spacer	
18	F430114	Washer	
19	F431021	Nut	

# Door Box Detail



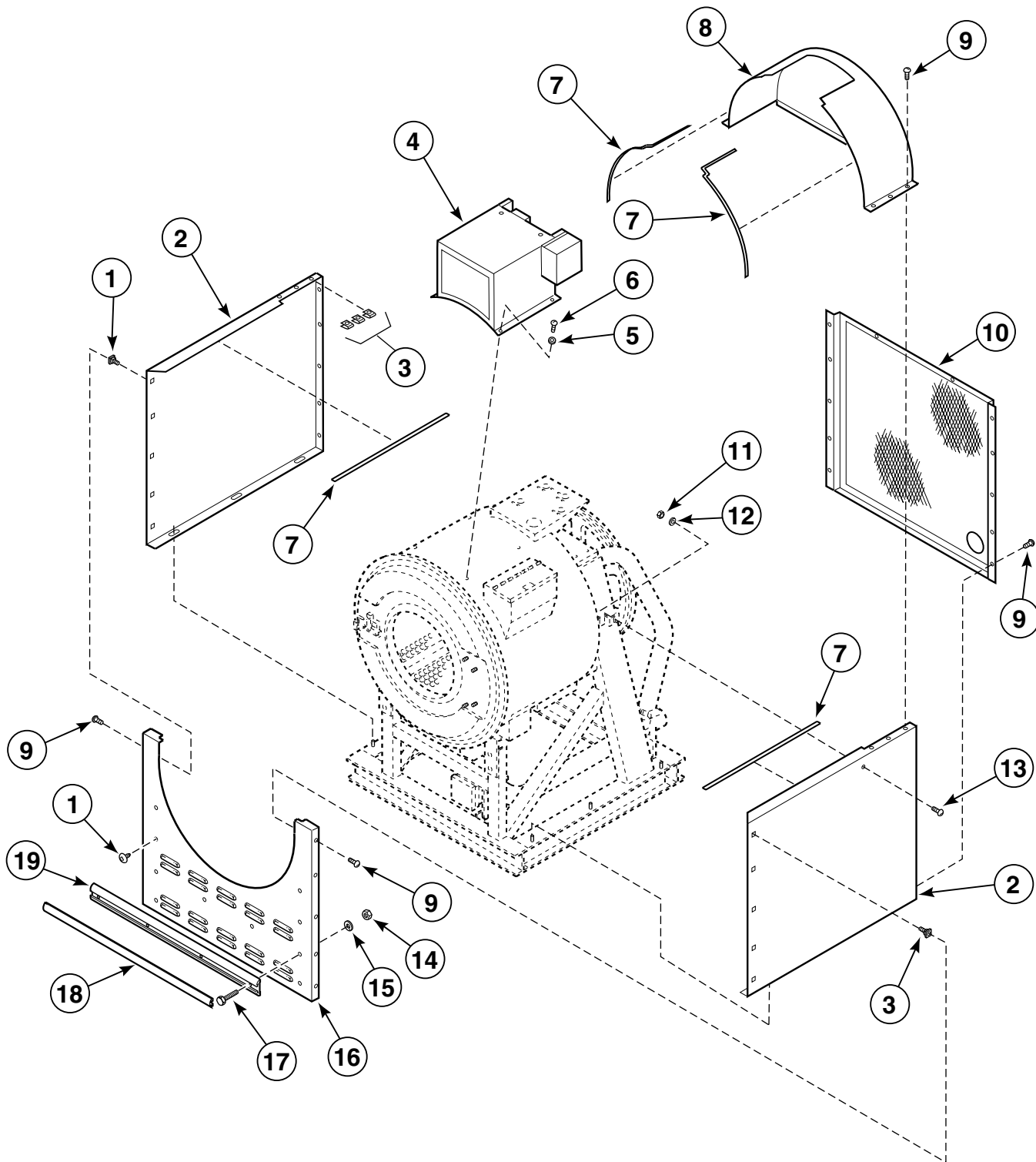
P144PE3A



## Door Box Detail

REF	PART #	DESCRIPTION	COMMENTS
1	F746200-1	Door Push Handle Kit	Includes items 2, 14, 15, and hardware
2	F340703	Magnet	
3	F431026	Nut	
4	F430917	Screw	
5	F340900	Microswitch	
6	F340702	Magnetic Position Switch	
7	F430231	Nut	
8	F300118	Door Unlock Solenoid	110 Volt
9	F330217	RC Network Filter	
10	F605466	Door Box	
11	F601055	Spacer	
12	F430114	Washer	
13	F431021	Nut	
14	F430909	Screw	
15	F230303	Decal	Push

# Panel Assembly

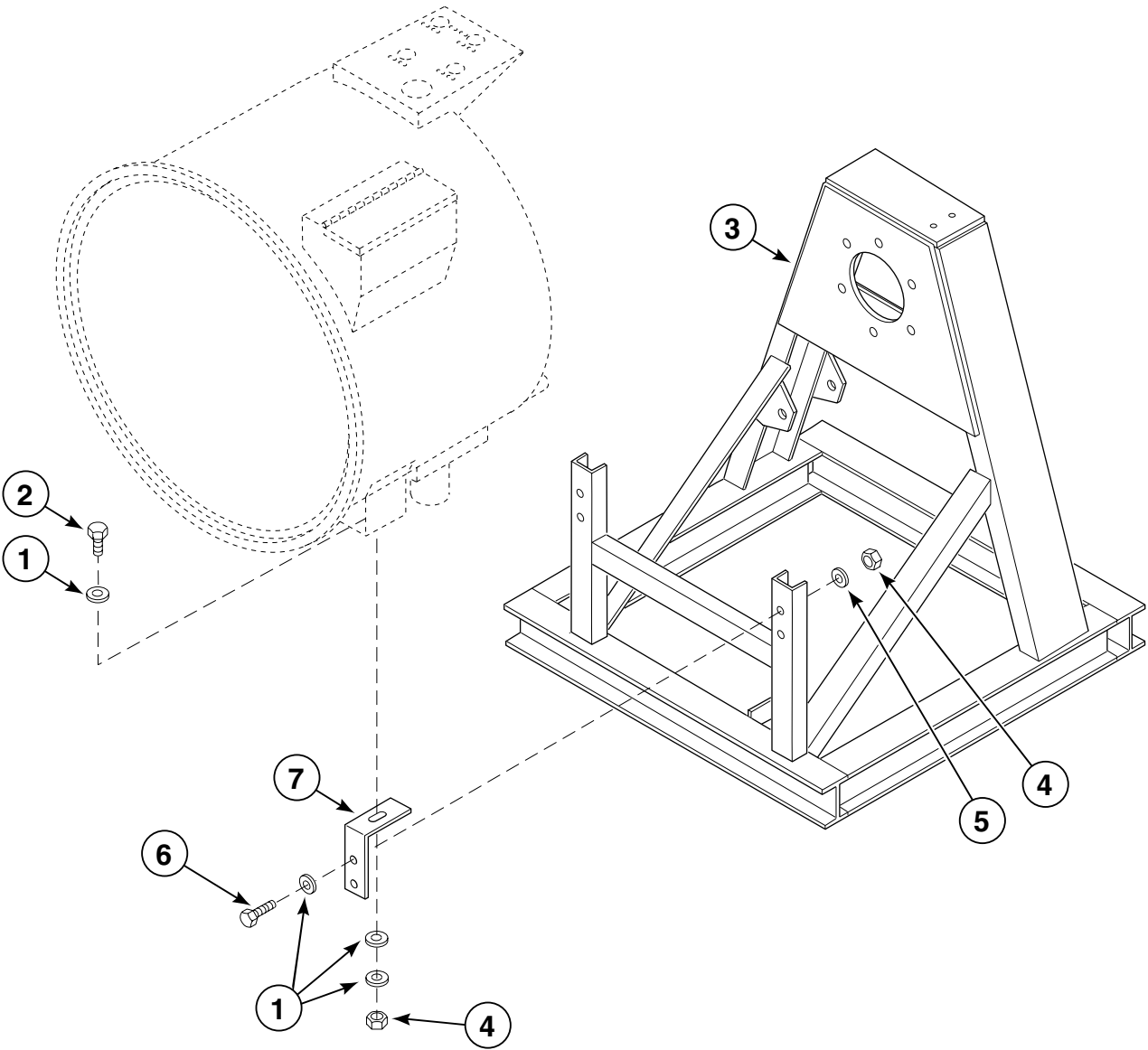


P142PE3A

# Panel Assembly

REF	PART #	DESCRIPTION	COMMENTS
1	F430901	Screw	
2	F632342	Side Panel	Reversible
3	F430606	Clip	
4	FUW35M2-MDL	Module Subassembly	UW35M Models
	FUW35S2-MDL	Module Subassembly	UW35S Models
5	F431108	Lockwasher	
6	F430904	Screw	
7	F170401	Trim	Sold per foot
8	F630158-1	Cage Wrap	UW35P Models
	F634147	Cage Wrap	UW35M and UW35S Models
9	F430956	Screw	
10	F632347	Rear Panel	Galvanized
11	F430215	Nut	
12	F430317	Washer	
13	F432234	Screw	
14	F430211	Nut	
15	F431100	Washer	
16	F630356	Front Panel	
17	F430921	Screw	
18	F150397	Extrusion Insert	
19	F150407	Rub Rail	

# Frame Assembly (2 Speed Models)

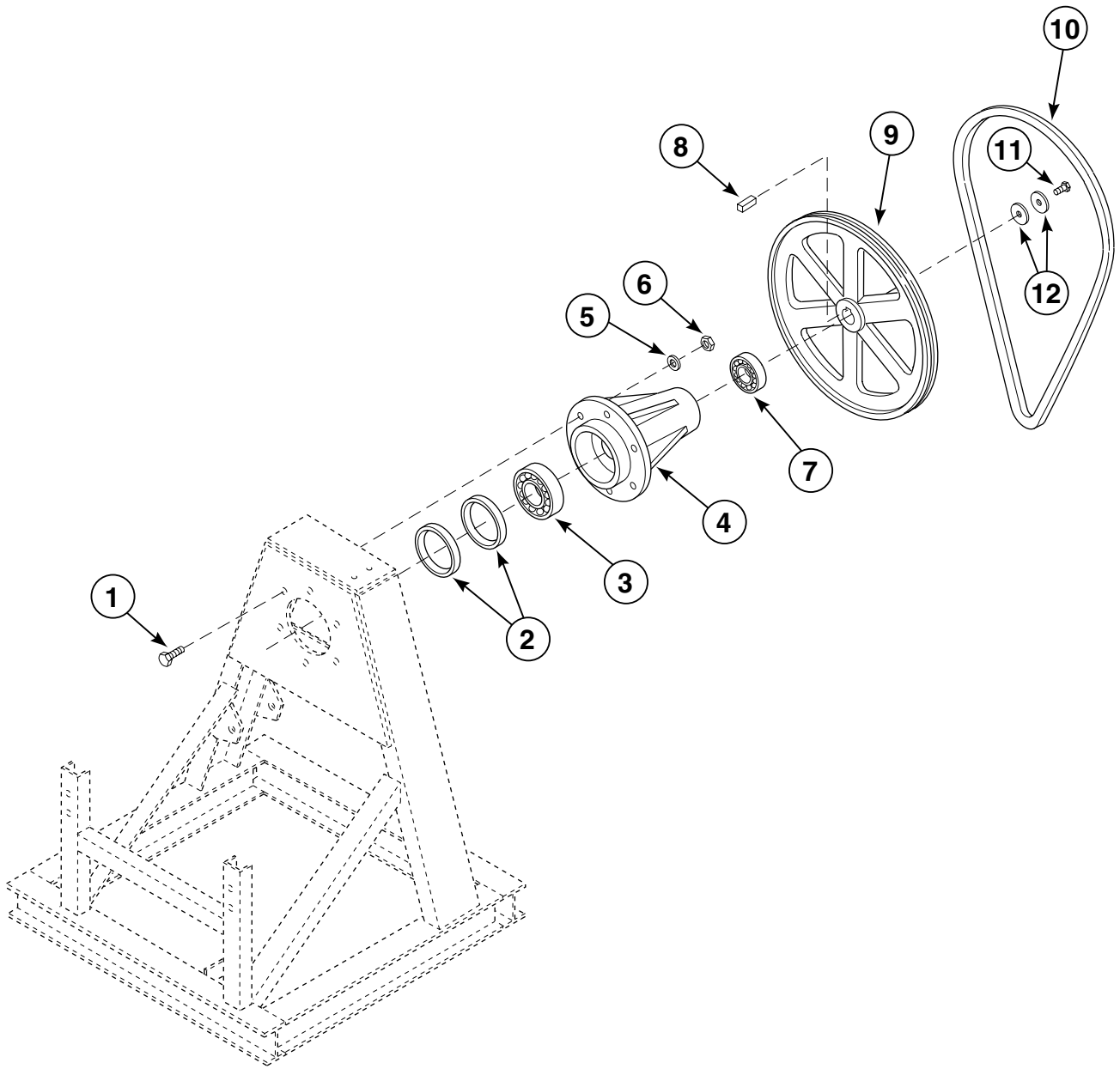


P038Pe3a

## Frame Assembly (2 Speed Models)

REF	PART #	DESCRIPTION	COMMENTS
1	F430301	Washer	
2	F430116	Bolt	
3	F604304	Frame	
4	F430205	Nut	
5	F430305	Washer	
6	F430924	Bolt	
7	F601806	Shell Mounting Bracket	

# Pulley and Trunnion Assembly (2 and 3 Speed)



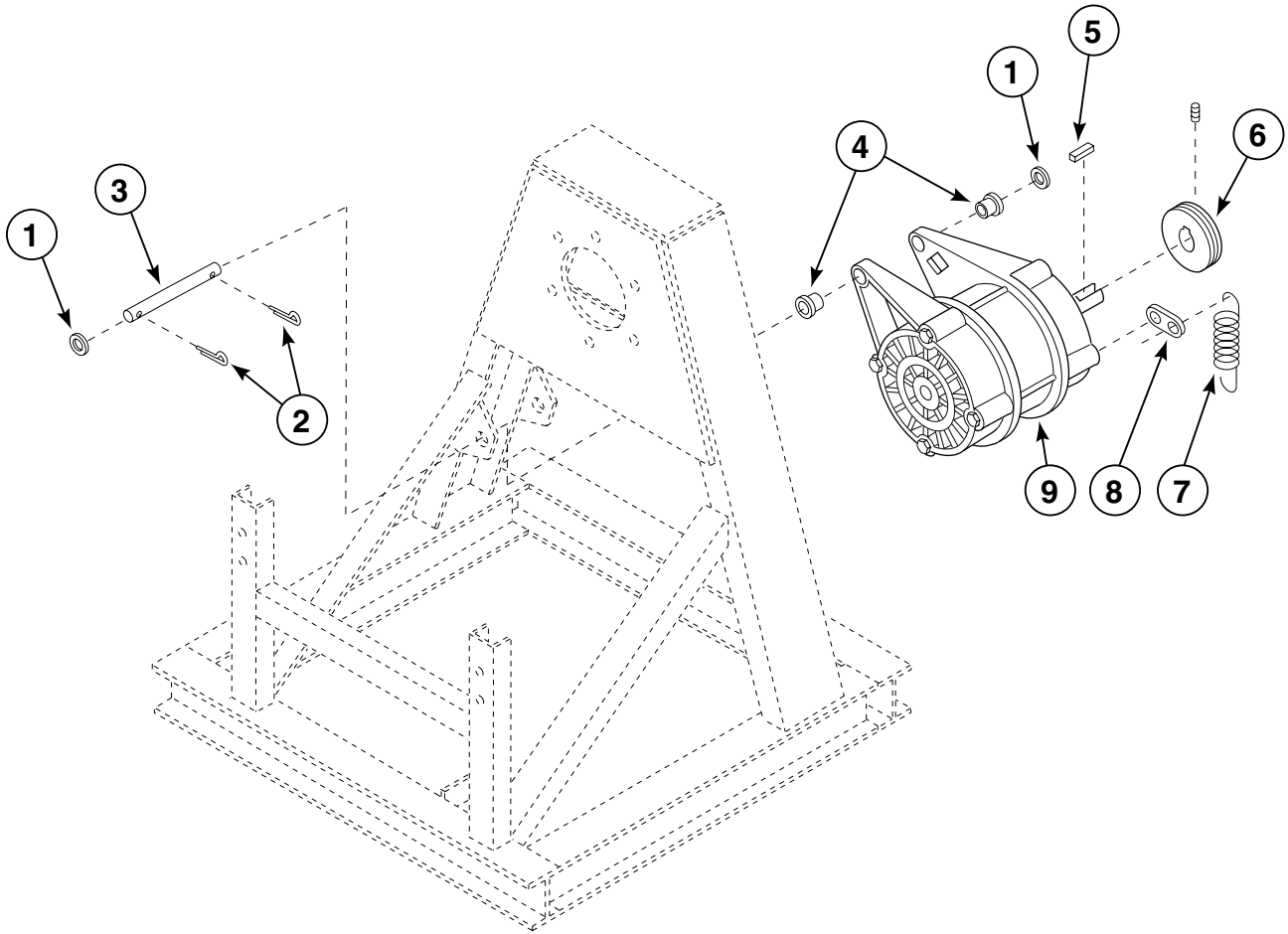
P035Pe3a

## Pulley and Trunnion Assembly (2 and 3 Speed)

REF	PART #	DESCRIPTION	COMMENTS
	F747002	Trunnion Kit	2 Speed, includes items 1-7
	F747004	Trunnion Kit	3 Speed, includes items 1-7
<b>1</b>	F430979	Bolt	2 Speed
	F430987	Bolt	3 Speed
<b>2</b>	F100228	Seal	2 Speed
	F100229	Seal	3 Speed
<b>3</b>	F100123	Front Bearing	2 Speed
	F100122	Front Bearing	3 Speed
<b>4</b>	F602737	Trunnion	2 Speed
	F603581	Trunnion	3 Speed
<b>5</b>	F431128	Washer	2 Speed
	F431131	Washer	3 Speed
<b>6</b>	F430239	Nut	2 Speed
	F430240	Nut	3 Speed
<b>7</b>	F100123	Rear Bearing	2 Speed
	F100122	Rear Bearing	3 Speed
<b>8</b>	F430801	Key	
<b>9</b>	F280198	Pulley	2 Speed
	F280297	Pulley	3 Speed
	F280418	Pulley†	2 Speed; 50 Hertz
	F280421	Pulley†	3 Speed; 60 Hertz
	F280420	Pulley†	3 speed; 60 Hertz; Outside Extract
	F280422	Pulley†	3 Speed; 50 Hertz; Wash
	F280419	Pulley†	3 Speed; 50 Hertz; Outside Extract
<b>10</b>	F280354	Belt	
<b>11</b>	F430927	Bolt	
<b>12</b>	F431126	Washer	

† After 11/16/98

# Motor Assembly



P039PE3B



# Motor Assembly

REF	PART #	DESCRIPTION	COMMENTS
1	F430310	Washer	
2	F430401	Cotter Pin	
3	F603059	Motor Support Rod	2 Speed; 3 phase
	F603897	Motor Support Rod	2 Speed, 1 phase; 3 Speed, 3 phase
	F633714	Motor Support Rod	3 Speed, 1 phase
4	F130311	Bushing	For machines made prior to 11/16/98
	F280298	Bushing†	2 Speed; 50 Hertz and 3-speed, 60 Hertz
	F280297	Bushing†	3 Speed; 60 Hertz; Outside Extract
	F280225	Bushing†	3 Speed; 50 Hertz
	F280417	Bushing†	3 Speed; 50 Hertz
5	F430802	Key	
6	F280146	Pulley	2 Speed; includes hardware
	F280187	Pulley	3 Speed; includes hardware
7	F310124	Spring	
8	F601515	Spring Clip	
9	F220215	Motor	Variable Speed; 208-240 Volt
	F220321-H	Motor	2 Speed; 208-240 Volt/1 Amp
	F220111	Motor	2 Speed; 208-240 Volt/3 Amp
	F220404	Motor	3 Speed; 208-240 Volt/60 Hertz
	F220405	Motor	3 Speed; 380-415 Volt/50 Hertz
	F220410	Motor	3 Speed; 208-240 Volt; Wash
	F220411	Motor	3 Speed; 208-240 Volt; Extract
	F220420	Motor	3 Speed; 380-415 Volt; Wash
	F220421	Motor	3 Speed; 380-415 Volt; Extract

† After 11/16/98

# Parts Index

---

## A

Adapter	
F421908 .....	17, 21
Air Trap	
F200142 .....	23

---

## B

Basket Assembly	
F603225-1 .....	25
F604129 .....	25
Battery	
F191101 .....	7
Belt	
F280354 .....	37
Bolt	
F430103 .....	23
F430116 .....	35
F430168 .....	27
F430500 .....	25
F430924 .....	35
F430927 .....	27, 37
F430979 .....	37
F430987 .....	37
Bottom Fill Tube Assembly	
F421202 .....	21
Bracket	
F605525 .....	29
Bushing	
F130311 .....	39
F140909 .....	9
F280225 .....	39
F280297 .....	39
F280298 .....	39
F280417 .....	39
Buzzer	
F300200 .....	9
F300202 .....	7
F300203 .....	7

---

## C

Cage Wrap	
F630158-1 .....	33
F634147 .....	33
Cap	
F190300 .....	29
Cap Nut	
F431026 .....	27
Chemical Supply Cup	
F150385 .....	15
F150386 .....	15
Clamp	
F200202 .....	13
F200213 .....	15, 23
F200214 .....	23
F200215 .....	23
F200401 .....	17

Clamp Shell Band Bracket	
F602901 .....	27
Clip	
F430606 .....	33
Connector	
F140309 .....	9
F140311 .....	9
F200302 .....	9, 13
F422106 .....	17
Contactora	
F330146 .....	7, 9, 11
F330147 .....	7, 9, 11
F330148 .....	7, 9
F330152 .....	7, 9
Control Module Cabinet Subassembly	
F604711-1 .....	7
Control Module Decal	
F230721 .....	11
Cotter Pin	
F430401 .....	39
Cover	
F606826 .....	7
Cycle Selector Switch	
F340442 .....	11

---

## D

Decal	
F230206 .....	5
F230218 .....	5
F230301 .....	5
F230302 .....	5
F230303 .....	31
F230501 .....	5
F230622 .....	9, 13
F230652 .....	5
F230677 .....	7, 9
F230678 .....	9
F230721 .....	7, 9
F230724 .....	9
F230911-1 .....	5
F230931 .....	5
F231020 .....	15
F231065 .....	5
F231367 .....	5
F231368 .....	5
F231380 .....	5
F231560 .....	7
Dial Indicator Cover	
F150310 .....	11
Door Assembly	
F603693 .....	27
F630492 .....	27
Door Box	
F605466 .....	31
Door Box Mounting Bracket	
F601129 .....	29
Door Gasket	
F170143 .....	27
Door Glass	
F290200 .....	27

Door Handle	
F150203 .....	27
Door Hinge	
F601045 .....	27
Door Hinge Pin	
F601815 .....	27
Door Push Handle Kit	
F746200-1 .....	31
Door Release Solenoid	
F300118 .....	29
F300119 .....	29
Door Unlock Solenoid	
F300118 .....	31
Door Unlock Switch	
F340412 .....	9
Door Unlock/Start Switch	
F340412 .....	11
Drain Hose	
F150312 .....	23
F150331 .....	23
Drain Tee	
F150318 .....	23
Drain Valve Assembly	
F380618 .....	23
F380619 .....	23
Dry Supply Insert	
F150388 .....	15
Dual Fuseholder	
F350312 .....	9
Dual Level Switch	
F340315 .....	7

## E

Elbow	
F420502 .....	17, 19, 21
F420509 .....	21
F422319 .....	27
Extension Arm Kit	
F746800 .....	27
Extrusion Insert	
F150397 .....	33

## F

Feed-thru Connector	
F140575 .....	7, 9
F140576 .....	7, 9
Fill Hose	
F200164 .....	17
Fill Tube	
F605793 .....	21
Fill Valve	
F380702 .....	21
Flange Relay	
F330227 .....	11
F330230 .....	11
Flow Restrictor	
F380106 .....	13
4-Way Supply Valve	
F380715 .....	9, 13
F380725 .....	13

4-Way Valve Repair Kit	
F380938 .....	13
4-way Supply Valve	
F380725 .....	9
Frame	
F604304 .....	35
Front Bearing	
F100122 .....	37
F100123 .....	37
Front Panel	
F630356 .....	33
Fuse	
F350104 .....	7, 9, 11
F350108 .....	9
F350109 .....	9
F350110 .....	9
F350115 .....	9
Fuse Holder	
F350304 .....	7, 9, 11

## G

Gasket	
F170135 .....	29
Gate Valve	
F380500 .....	21
Ground Lug	
F140734 .....	7, 11

## H

Hose	
F150478 .....	15
F200110 .....	13
F200199 .....	17
F610086 .....	13
F610088 .....	13
F610196 .....	13
Hose Adapter	
F421908 .....	19
F421909 .....	21
Hose Barb	
F421930 .....	17
F421951 .....	21
Hose Clamp	
F200206 .....	21
F200222 .....	21

## I

Indicator Dial	
F150370 .....	11
Input Power Terminal Block	
F140746 .....	7, 9
Insulator Bushing	
F140909 .....	13

---

## K

Key	
F430801 .....	37
F430802 .....	39
Keymode Switch	
F730186 .....	7, 9

---

## L

Light	
F350400 .....	9
F350409 .....	11
F350412 .....	7, 11
F350413 .....	11
F350414 .....	7, 11
Lockwasher	
F431100 .....	15
F431108 .....	33
Lower Door Latch	
F150204 .....	27
Lower Door Latch Bracket	
F150202 .....	27

---

## M

Magnet	
F340703 .....	31
Magnetic Position Switch	
F340702 .....	31
Magnetic Switch	
F340702 .....	29
Microswitch	
F340900 .....	31
Module Subassembly	
FUW35M2-MDL .....	33
FUW35S2-MDL .....	33
Motor	
F220111 .....	39
F220215 .....	39
F220321-H .....	39
F220404 .....	39
F220405 .....	39
F220410 .....	39
F220411 .....	39
F220420 .....	39
F220421 .....	39
Motor Support Rod	
F603059 .....	39
F603897 .....	39
F633714 .....	39
Mueller Valve Coil	
F380900 .....	13
F380917 .....	13

---

## N

Nipple	
F420101 .....	19, 21
F420103 .....	17, 19, 21
F420105 .....	17, 19, 21

Nozzle	
F380300 .....	13
Nut	
F430205 .....	25, 27, 35
F430211 .....	23, 29, 33
F430215 .....	33
F430224 .....	13
F430231 .....	31
F430239 .....	37
F430240 .....	37
F431005 .....	15, 23, 25
F431021 .....	29, 31
F431022 .....	7, 9, 11, 13, 27
F431026 .....	31

---

## O

On/Off Switch	
F340411 .....	11
O-Ring	
F170208 .....	13, 15
F170215 .....	15
Output Board	
F370449 .....	9
F370450 .....	9
Overflow Hose	
F150353 .....	23

---

## P

Pin	
F431201 .....	29
Plug	
F140527 .....	9, 13
F420408 .....	21
Plug Cap	
F190304 .....	15
Plunger	
F601081 .....	29
Power Input Block	
F140746 .....	11
Pulley	
F280146 .....	39
F280187 .....	39
F280198 .....	37
F280297 .....	37
F280418 .....	37
F280419 .....	37
F280420 .....	37
F280421 .....	37
F280422 .....	37

---

## R

RC Network Filter	
F330217 .....	7, 9, 29, 31
Rear Bearing	
F100122 .....	37
F100123 .....	37
Rear Panel	
F632347 .....	33

Relay	
F330227 .....	7
F330230 .....	7
Retainer Ring	
F320100 .....	27
Ribbon Cable	
F140219 .....	7
Rub Rail	
F150407 .....	33

## S

Screw	
F430152 .....	13
F430502 .....	29
F430901 .....	33
F430903 .....	7, 11
F430904 .....	33
F430909 .....	31
F430916 .....	7, 9, 11, 13
F430917 .....	15, 27, 29, 31
F430921 .....	33
F430922 .....	11
F430928 .....	7, 9, 11
F430948 .....	13
F430956 .....	33
F430988 .....	29
F432234 .....	33
Seal	
F100228 .....	37
F100229 .....	37
Set Coller	
F601190 .....	29
Shell Assembly	
F603691 .....	25
F603692 .....	25
F604125 .....	25
F604126 .....	25
F604128 .....	25
F633964-1 .....	25
F634082-1 .....	25
F634508 .....	25
F634510 .....	25
Shell Band Assembly	
F603229-1 .....	25
Shell Gasket	
F607042-2 .....	25
Shell Mounting Bracket	
F601806 .....	25, 35
Side Panel	
F632342 .....	33
Soap Dispenser Lid Gasket	
F170158 .....	15
Soap Dispenser Shroud	
F633032 .....	15
Soap Injection Nozzle Kit	
F730168 .....	15
Solenoid Valve	
F380700 .....	17
F380701 .....	17
Solid State Fuse/Relay Board	
F370444 .....	7
F370449 .....	9
F370450 .....	9

Spacer	
F431914 .....	29
F601055 .....	29, 31
Spray Plumbing Assembly	
F633150 .....	19
F633150-1 .....	19
F633150-2 .....	19
F633150-3 .....	19
F633150-4 .....	19
F633150-5 .....	19
F633150-6 .....	19
F633150-7 .....	19
Spray Rinse Hose Kit	
F730025 .....	27
Spray Rinse Nozzle Kit	
F730077 .....	27
Spray Tube Assembly	
F603696-7 .....	27
Spray Valve	
F381702 .....	19
Spray Valve Repair Kit	
F380991 .....	21
F380993 .....	19
Spring	
F300119 .....	29
F310124 .....	39
Spring Clip	
F601515 .....	39
S-Series Computer	
F370555-00 .....	9
Strain Relief Connector Assembly	
F749802 .....	15
Strain Relief Plug	
F170165 .....	15
Street Elbow	
F420500 .....	19, 21
Supply Cup	
F603411 .....	13
Supply Dispenser Lid	
F150384 .....	15
Supply Nozzle	
F380300 .....	15
Supply Nozzle Kit	
F730168 .....	13
Supply Nozzle Nut	
F430224 .....	15
Supply Polypropylene Dispenser	
F150383 .....	15
Switch Boot	
F340409 .....	7
Switch Mounting Bracket	
F604213 .....	11

## T

Tee	
F420400 .....	21
F420401 .....	17, 19
Terminal Block	
F140738 .....	13
F140776 .....	13
Terminal Connector	
F141870 .....	7

Terminal Strip	
F140738 .....	7, 9, 11
Time Delay Relay	
F330234 .....	11
F330235 .....	11
Timer	
F160301 .....	11
F160304 .....	11
Timer Motor	
F160538 .....	11
F160539 .....	11
Timer Mounting Bracket	
F604214 .....	11
Top Door Latch Bracket	
F150201 .....	27
Top Fill Tube Assembly	
F603696-7 .....	17
Transformer	
F360124 .....	11
Trim	
F170400 .....	13, 15
F170401 .....	33
F170402 .....	13
Trunnion	
F602737 .....	37
F603581 .....	37
Trunnion Kit	
F747002 .....	37
F747004 .....	37
Tube Connector	
F422106 .....	19
Tube Holding Clamp	
F602880 .....	27
Tubing	
F140905 .....	15
F422404 .....	7, 11

---

## U

U-Bolt	
F200401 .....	19, 21
Union	
F422500 .....	7

---

## V

Vacuum Breaker	
F380800 .....	17, 19, 21

---

## W

Washer	
F430114 .....	29, 31
F430301 .....	25, 35
F430305 .....	23, 35
F430310 .....	39
F430311 .....	11
F430317 .....	25, 33
F431100 .....	27, 33
F431113 .....	7, 9, 11
F431118 .....	27
F431126 .....	37
F431128 .....	37
F431131 .....	37
F431133 .....	15
F431147 .....	15, 23
Water Level Switch	
F340315 .....	9
F340328 .....	11
Water Level Switch Bracket	
F630242 .....	11
WE-6 Microcomputer	
F370534-00 .....	7