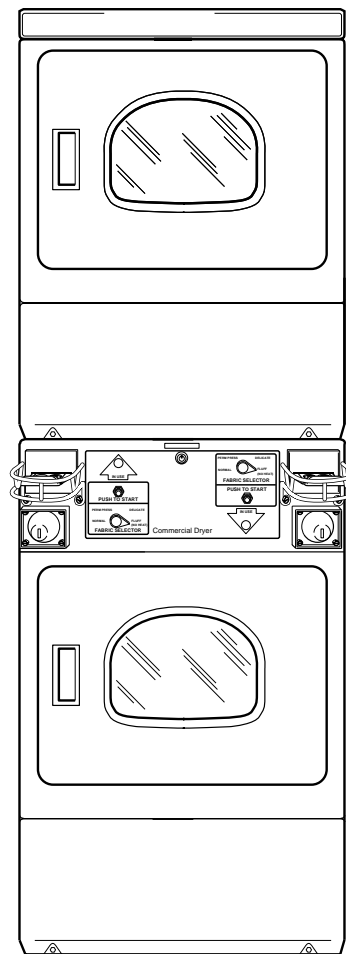


Stacked Dryers

Metered and Nonmetered
See Page 3 for Model Numbers



D330P

Table of Contents

Title	Page
Parts Ordering Information	2
Nameplate Location	2
Model Identification	3
Control Panel and Controls (Nonmetered)	4
Control Panel and Controls (Coin Slide Ready)	6
Control Panel and Controls (Coin Drop)	8
Control Panel and Controls (Card Reader Ready)	10
Control Panel and Controls (Card Reader Installed)	12
Control Cabinet (Nonmetered).....	14
Control Cabinet (Coin Slide Ready).....	16
Control Cabinet (Coin Drop)	18
Control Cabinet (Card Reader Ready)	20
Control Cabinet (Card Reader Installed)	22
Two Switch Timer	24
Three Switch Timer.....	26
Loading Door	28
Loading Door With Window	30
Access Panel, Front Panel and Seal	32
Motor, Exhaust Fan and Belt	34
Front Bulkhead, Air Duct, Felt Seal and Cylinder	36
Rear Bulkhead, Felt Seal, Cylinder Roller and Terminal Block	38
Heater Duct and Element Assembly	40
Heater Duct Assembly	42
Gas Valve, Igniter and Gas Conversion Kits	44
Cabinet, Exhaust Duct and Base (Upper Dryer)	46
Cabinet, Exhaust Duct And Base (Lower Dryer)	48
Power Cord.....	50
Terminal Block and Terminals	52
Terminals	54
Motor Connection Block, Terminal Extractor Tools	56
Wire Harnesses and Wires	58
Parts Index.....	61

© Copyright 1998, Alliance Laundry Systems LLC

All rights reserved. No part of the contents of this book may be reproduced or transmitted in any form or by any means without the expressed written consent of the publisher.

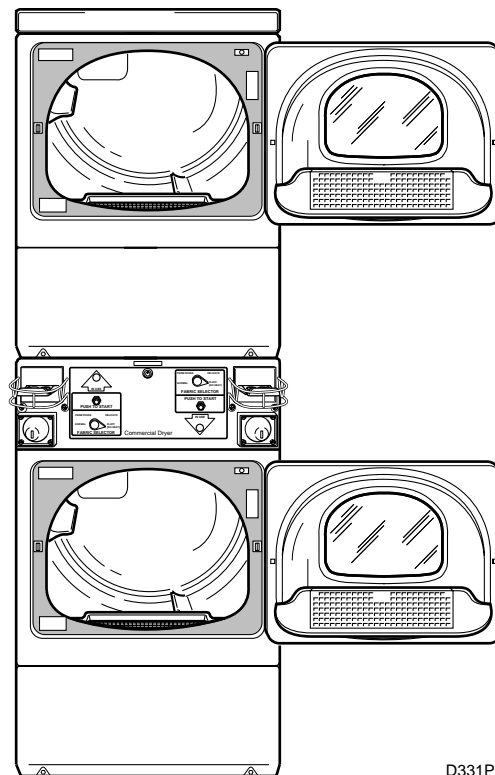
Parts Ordering Information

If literature or replacement parts are required, contact the source from whom the machine was purchased or contact Alliance Laundry Systems at (920) 748-3950 for the name and address of the nearest authorized parts distributor.

For technical assistance, call (920) 748-3121.

Nameplate Location

When calling or writing about your product, be sure to mention model and serial numbers. Model and serial numbers are located on nameplate(s) as shown.



D331P

Model Identification

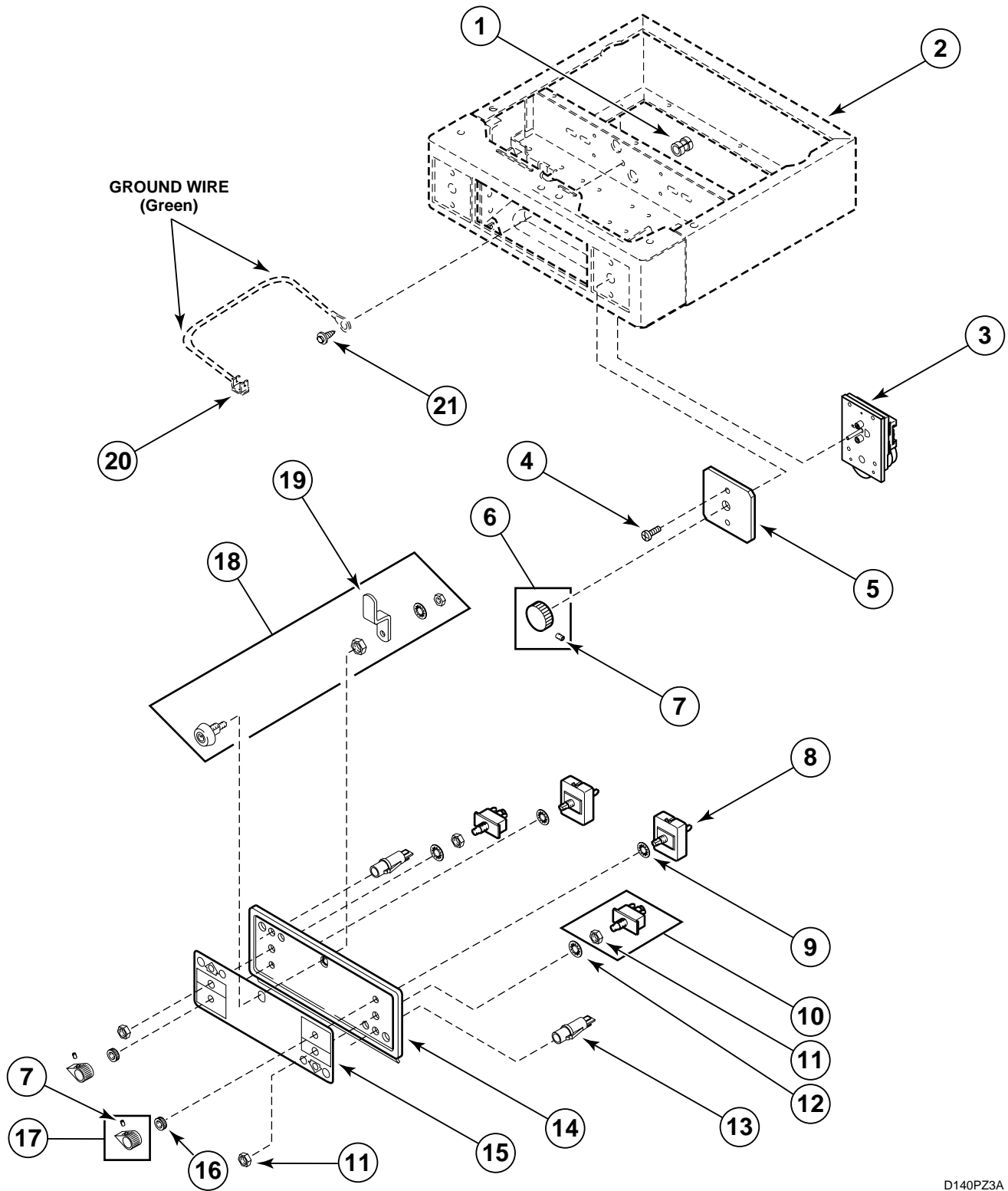
Information in this manual is applicable to these dryers:

Model Number	Nonmetered Model	Metered Model	Counter	Coin Drop Ready	Coin Drop Installed	Coin Slide Ready	Electronic Display Control	Card Reader Ready	Card Reader Installed	Electric Heat	Gas Heat
HSE117*A		X				X			X	X	
HSE117*C		X				X			X	X	
HSG119*A		X									X
HSG119*C		X									X
SSE007*A	X									X	
SSE007*A1500	X									X	
SSE107*A		X				X				X	
SSE107*A1500		X				X				X	
SSE117*A		X				X				X	
SSE117*A1500		X				X				X	
SSE307*A		X	X			X				X	
SSE307*A1500		X	X			X				X	
SSE407*A		X		X			X			X	
SSE407*A1500		X		X			X			X	
SSE407*D		X		X			X			X	
SSE407*D1500		X		X			X			X	
SSE417*A		X		X			X			X	
SSE417*D		X		X			X			X	
SSE507*A		X			X		X			X	
SSE507*A1500		X			X		X			X	
SSE517*A		X			X		X			X	
SSE517*A1500		X			X		X			X	
SSE607*C		X					X	X		X	
SSE607*C1500		X					X	X		X	
SSE607*D										X	
SSE607*D1500										X	
SSE617*C		X					X	X		X	
SSE617*D		X					X	X		X	
SSE707*A		X					X		X	X	
SSE717*A		X					X		X	X	
SSG009*A	X										X
SSG109*A		X									X
SSG119*A		X				X					X
SSG309*A		X	X			X					X
SSG409*A		X		X			X				X
SSG409*D		X		X			X				X
SSG419*A		X		X			X				X
SSG419*D		X		X			X				X
SSG509*A		X			X		X				X
SSG519*A		X			X		X				X
SSG609*C		X					X	X			X
SSG609*D		X									X
SSG619*C		X					X	X			X
SSG619*D		X									X
SSG709*A		X					X		X		X
SSG719*A		X					X		X		X
USE007*A	X									X	
USG009*A	X										X

* Add Letter To Designate Color. L – Almond W – White

Control Panel and Controls (Nonmetered)

(Models SSE007*A, SSE007*A1500, SSG009*A, USE007*A and USG009*A)



D140PZ3A

* Add Letter to Designate Color. L – Almond W – White

Control Panel and Controls (Nonmetered)

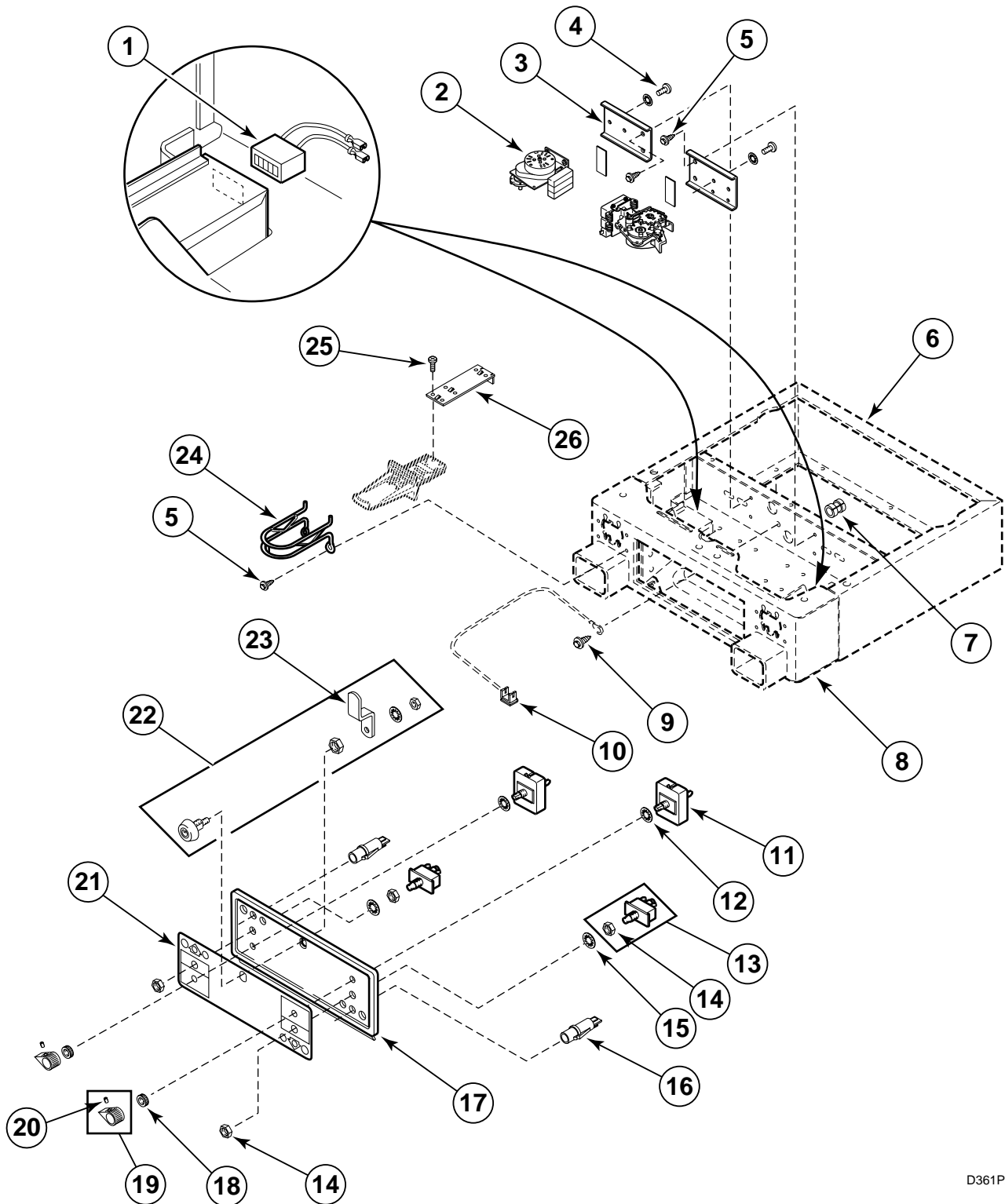
(Models SSE007*A, SSE007*A1500, SSG009*A, USE007*A and USG009*A)

REF	PART #	DESCRIPTION	COMMENTS
1	52113	Strain Relief	Gas Models
	52151	Strain Relief	Electric Models
2	503541	Control Cabinet	
3	500399	Timer	
4	27328	Screw	
5	500814	Overlay	
6	54678	Timer Knob Assembly	
7	20310	Setscrew	
8	61512	Fabric Selector Switch	
9	91176	Lockwasher	
10	55882	Push-to-Start Switch Assembly	
11	52947	Hex Nut	
12	25820	Lockwasher	
13	32464	Indicator Light	
14	500228*	Control Panel	
15	504590	Control Panel Overlay	
16	24205	Knurled Nut	
17	35182	Control Knob Assembly	
18	27260	Lock Assembly	
19	27261	Cam	
20	00161	Ground Clip	
21	20530	Screw	

* Add Letter To Designate Color. L – Almond W – White

Control Panel and Controls (Coin Slide Ready)

(Models HSE117*A, HSE117*C, HSG119*A, HSG119*C, SSE107*A, SSE107*A1500, SSE117*A, SSE117*A1500, SSE307*A, SSE307*A1500, SSG109*A, SSG119*A and SSG309*A)



D361PZ3A

* Add Letter to Designate Color. L – Almond W – White

Control Panel and Controls (Coin Slide Ready)

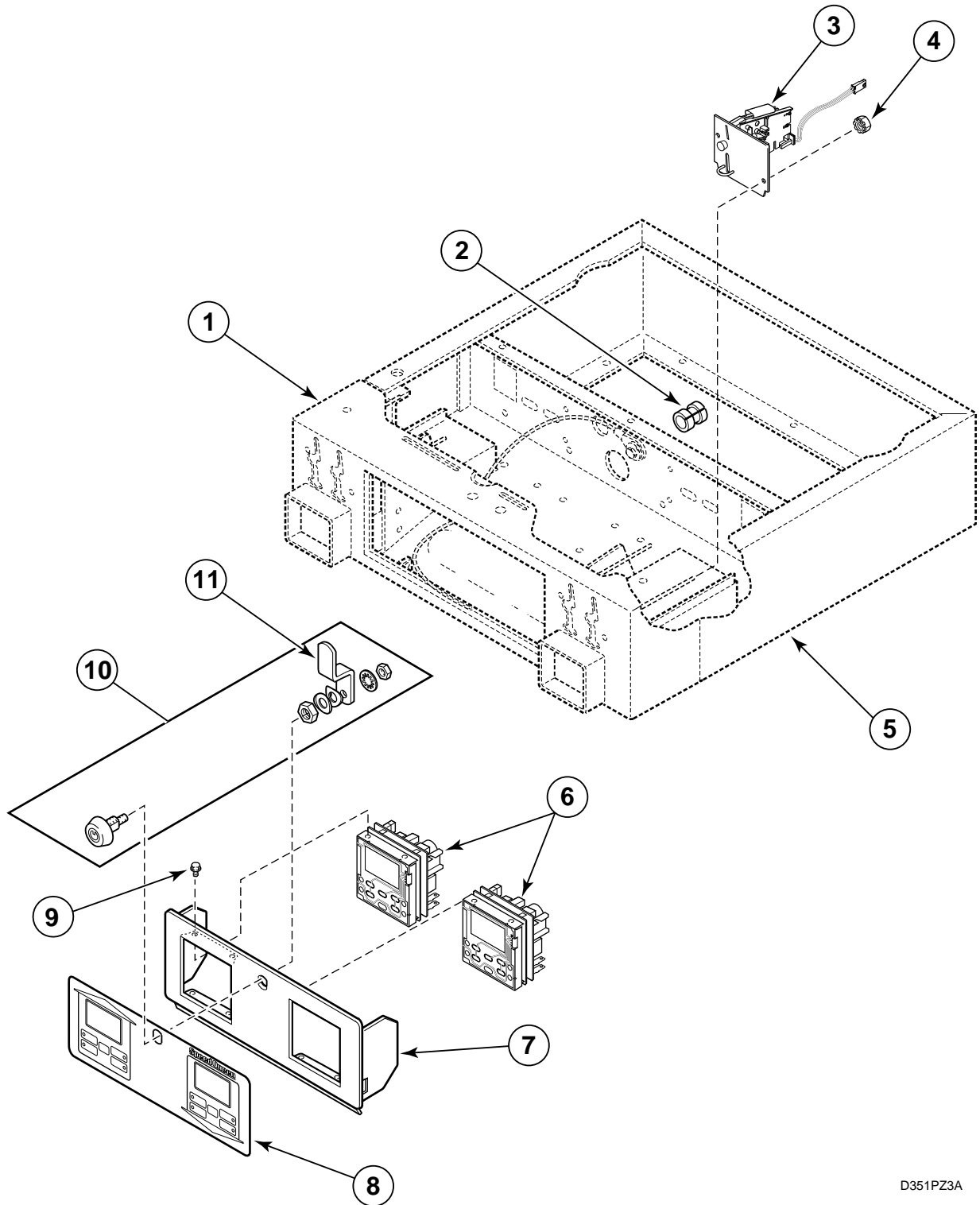
(Models HSE117*A, HSE117*C, HSG119*A, HSG119*C, SSE107*A, SSE107*A1500, SSE117*A, SSE117*A1500, SSE307*A, SSE307*A1500, SSG109*A, SSG119*A and SSG309*A)

REF	PART #	DESCRIPTION	COMMENTS
1	62113P	Counter Kit	Models SSE307*A, SSE307*A1500 and SSG309*A
2	59228	Timer	
3	503017	Timer Bracket	
4	03203	Screw	
5	503661	Screw	
6	503541*	Control Cabinet Wrapper	
7	52113	Strain Relief	Gas Models
	52151	Strain Relief	Electric Models
8	500847*	Control Cabinet Front	
9	20530	Screw	
10	00161	Ground Clip	
11	61512	Fabric Selector Switch	
12	91176	Lockwasher	
13	55882	Push-to-Start Switch Assembly	
14	52947	Nut	
15	25820	Lockwasher	
16	32464	Indicator Light	
17	500228*	Control Panel	
18	24205	Knurled Nut	
19	35182	Control Knob Assembly	
20	20310	Setscrew	
21	504590	Control Panel Overlay	
22	27260	Lock Assembly	
23	27261	Cam	
24	58181	Coin Slide Guide	
25	03950	Screw	
26	503455	Slide Extension	

* Add Letter To Designate Color. L – Almond W – White

Control Panel and Controls (Coin Drop)

(Models SSE407*A, SSE407*A1500, SSE407*D, SSE407*D1500, SSE417*A, SSE417*D, SSE507*A, SSE507*A1500, SSE517*A, SSE517*A1500, SSG409*A, SSG409*D, SSG419*A, SSG419*D, SSG509*A and SSG519*A)



D351PZ3A

* Add Letter to Designate Color. L – Almond W – White

Control Panel and Controls (Coin Drop)

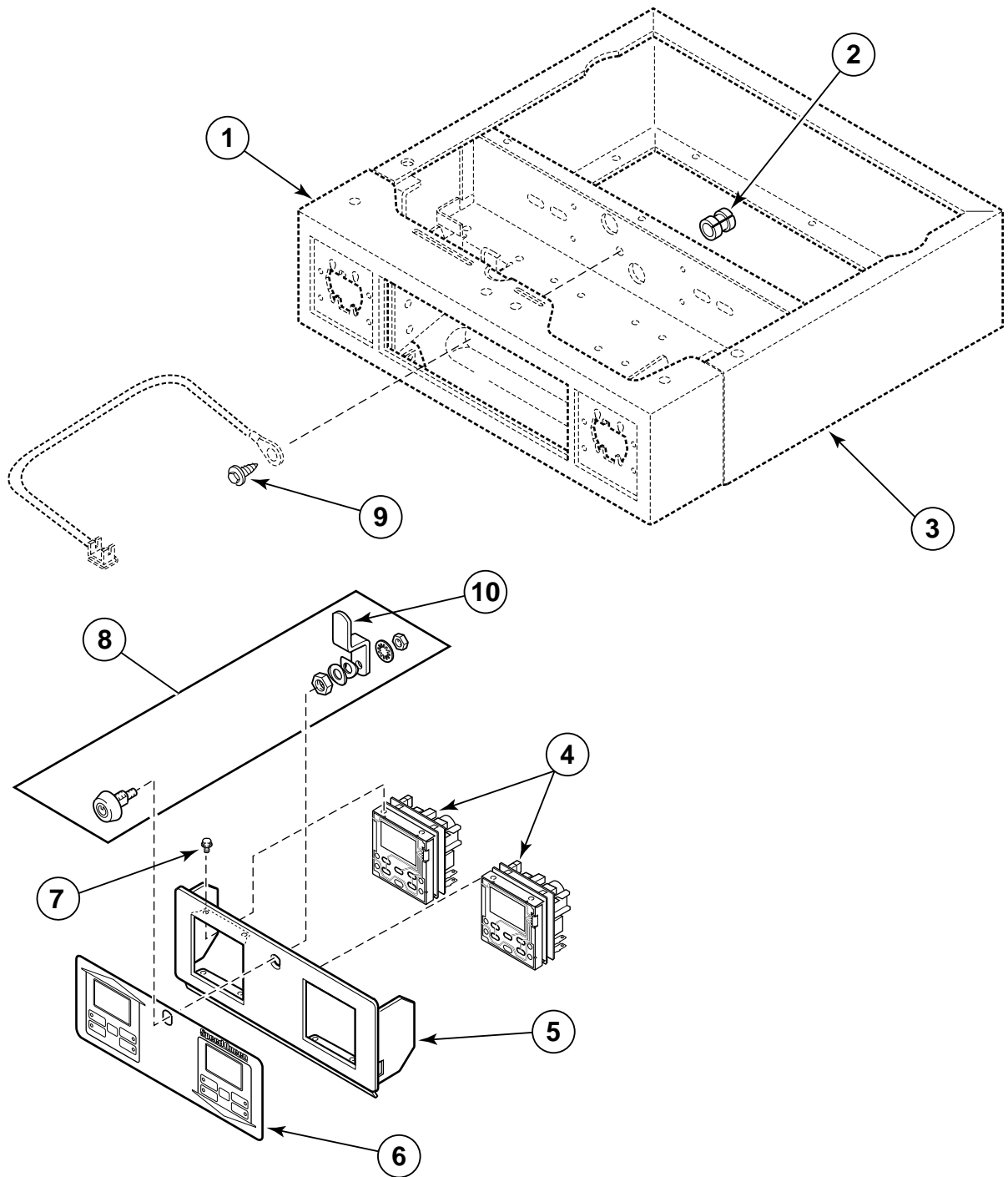
(Models SSE407*A, SSE407*A1500, SSE407*D, SSE407*D1500, SSE417*A, SSE417*D, SSE507*A, SSE507*A1500, SSE517*A, SSE517*A1500, SSG409*A, SSG409*D, SSG419*A, SSG419*D, SSG509*A and SSG519*A)

REF	PART #	DESCRIPTION	COMMENTS
1	503761*	Control Cabinet Front	
2	52113	Strain Relief	Gas Models
	52151	Strain Relief	Electric Models
3	38479	Single Coin Drop	Models SSE507*A, SSE507*A1500, SSE517*A, SSE517*A1500, SSG509*A and SSG519*A
4	29786	Locknut	
5	503541*	Control Cabinet Wrapper	
6	M414050P	Electronic Control	
7	501346*	Control Panel	
8	504117	Graphic Overlay	
9	501524	Screw	
10	27260	Lock Assembly	
11	27261	Cam	

* Add Letter To Designate Color. L – Almond W – White

Control Panel and Controls (Card Reader Ready)

(Models SSE607*C, SSE607*C1500, SSE607*D, SSE607*D1500, SSE617*C, SSE617*D, SSG609*C, SSG609*D, SSG619*C and SSG619*D)



D352PZ3A

* Add Letter to Designate Color. L – Almond W – White

Control Panel and Controls (Card Reader Ready)

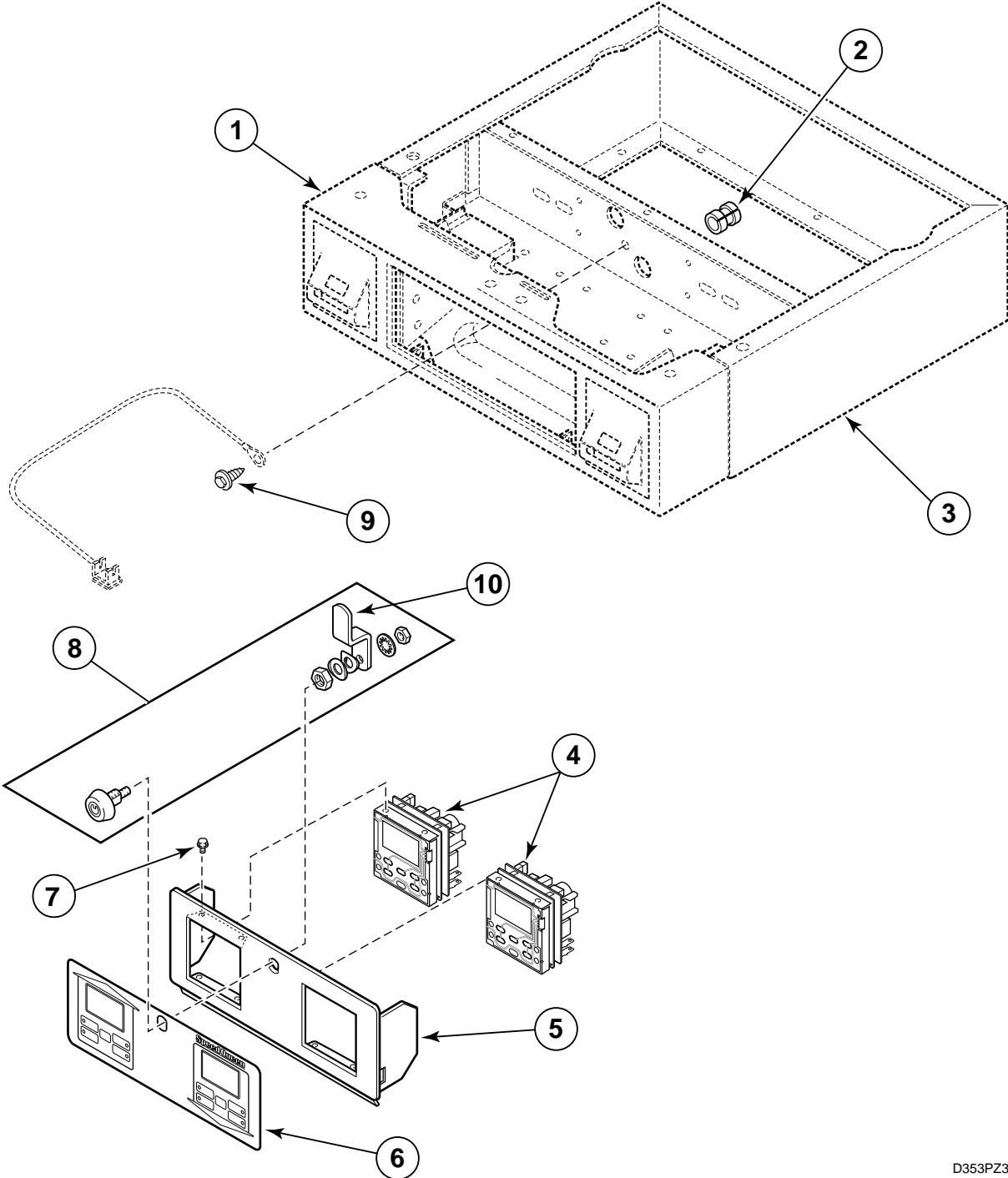
(Models SSE607*C, SSE607*C1500, SSE607*D, SSE607*D1500, SSE617*C, SSE617*D, SSG609*C, SSG609*D, SSG619*C and SSG619*D)

REF	PART #	DESCRIPTION	COMMENTS
1	505227*	Control Cabinet Front	
2	52113	Strain Relief	Gas Models
	52151	Strain Relief	Electric Models
3	503541*	Control Cabinet Wrapper	
4	M414050P	Electronic Control	
5	501346*	Control Panel	
6	504117	Graphic Overlay	
7	501524	Screw	
8	27260	Lock Assembly	
9	20530	Screw	
10	27261	Cam	

* Add Letter To Designate Color. L – Almond W – White

Control Panel and Controls (Card Reader Installed)

(Models SSE707*A, SSE717*A, SSG709*A and SSG719*A)



D353PZ3A

* Add Letter to Designate Color. L – Almond W – White

Control Panel and Controls (Card Reader Installed)

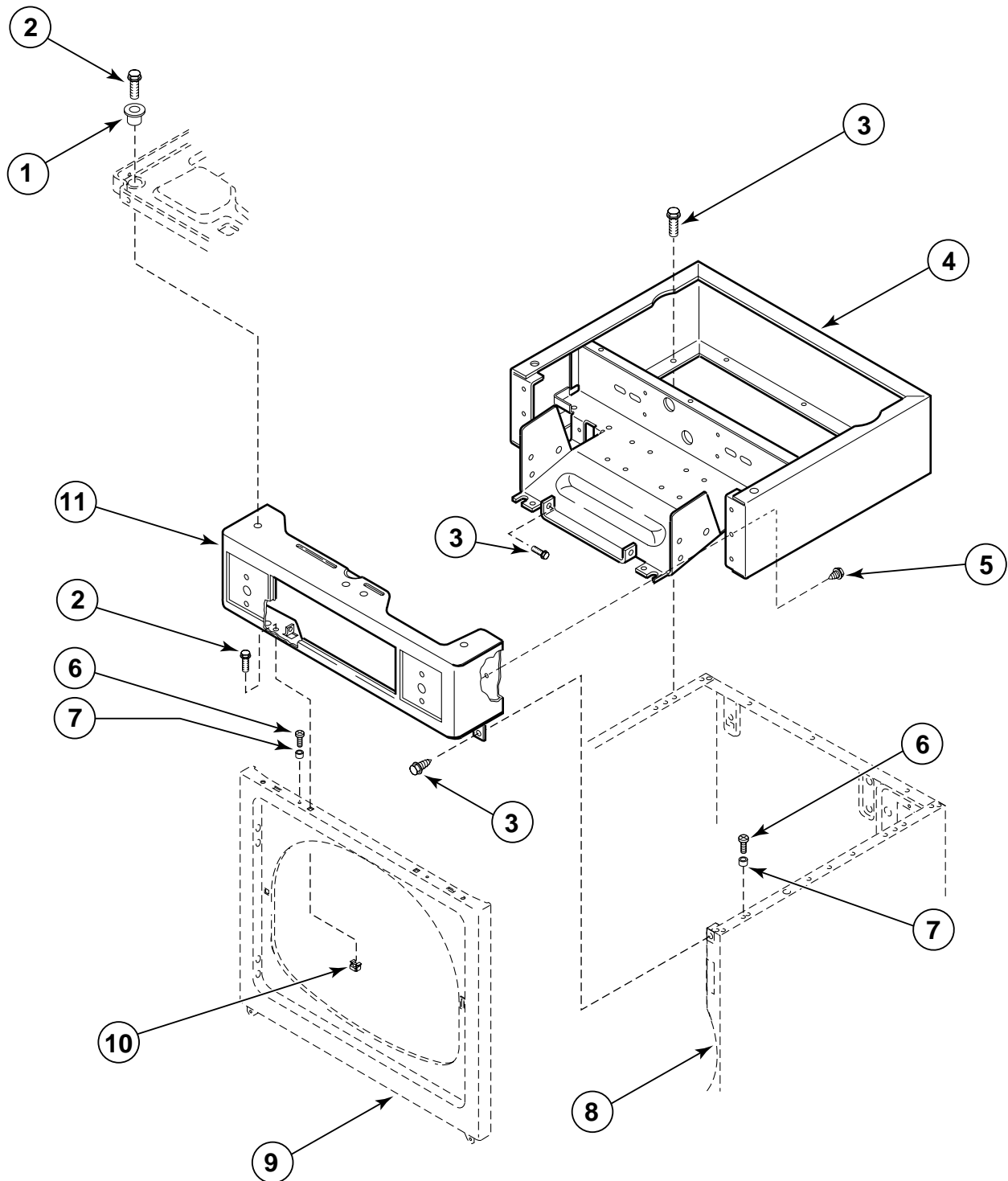
(Models SSE707*A, SSE717*A, SSG709*A and SSG719*A)

REF	PART #	DESCRIPTION	COMMENTS
1	503428*	Control Cabinet Front	
2	52113	Strain Relief	Gas Models
	52151	Strain Relief	Electric Models
3	503541*	Control Cabinet Wrapper	
4	M414050P	Electronic Control	
5	501346*	Control Panel	
6	504117	Graphic Overlay	
7	501524	Screw	
8	27260	Lock Assembly	
9	20530	Screw	
10	27261	Cam	

* Add Letter To Designate Color. L – Almond W – White

Control Cabinet (Nonmetered)

(Models SSE007*A, SSE007*A1500, SSG009*A, USE007*A and USG009*A)



D332PZ3A

* Add Letter to Designate Color. L – Almond W – White

Control Cabinet (Nonmetered)

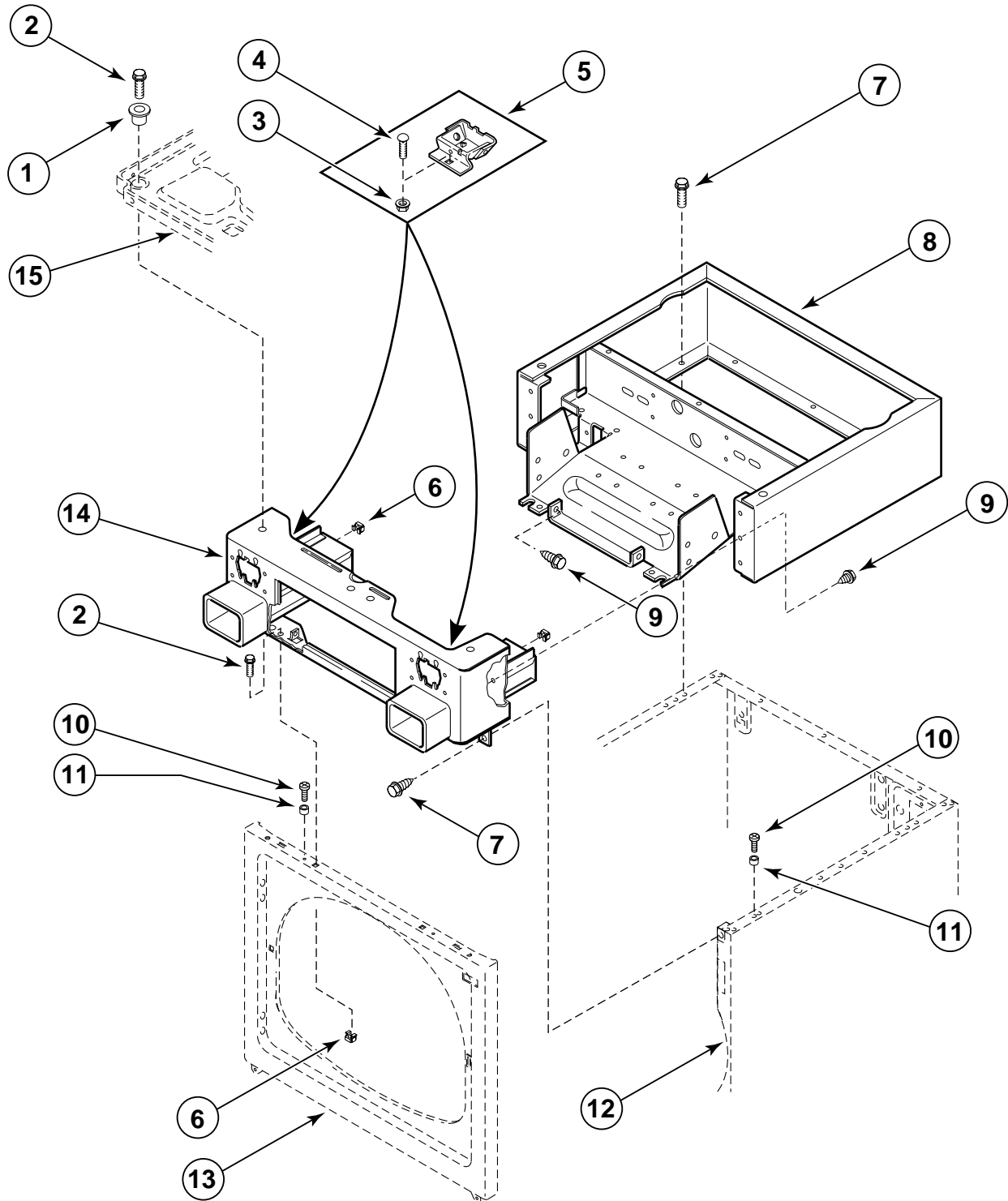
(Models SSE007*A, SSE007*A1500, SSG009*A, USE007*A and USG009*A)

REF	PART #	DESCRIPTION	COMMENTS
1	501307	Washer	
2	502431	Screw	
3	503661	Screw	
4	503541*	Control Cabinet Wrapper	
5	503688	Screw	
6	32671	Screw	
7	56079	Locator	
8	500001*P	Cabinet	
9	503656*	Front Panel	
10	80077	Caged Nut	
11	500225*	Control Cabinet Front	

* Add Letter To Designate Color. L – Almond W – White

Control Cabinet (Coin Slide Ready)

(Models HSE117*A, HSE117*C, HSG119*A, HSG119*C, SSE107*A, SSE107*A1500, SSE117*A, SSE117*A1500, SSE307*A, SSE307*A1500, SSG109*A, SSG119*A and SSG309*A)



D333PZ3A

* Add Letter to Designate Color. L – Almond W – White

Control Cabinet (Coin Slide Ready)

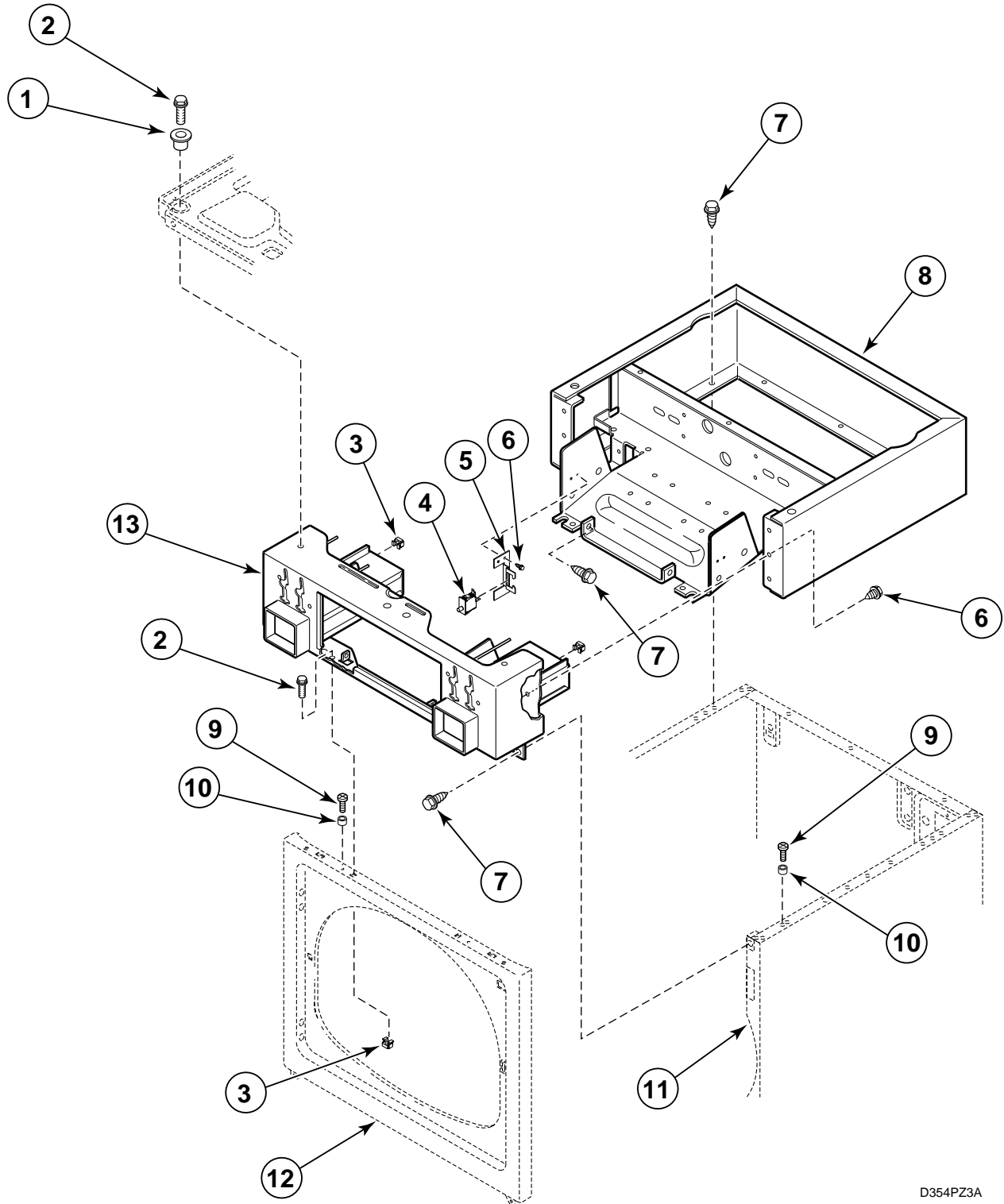
(Models HSE117*A, HSE117*C, HSG119*A, HSG119*C, SSE107*A, SSE107*A1500, SSE117*A, SSE117*A1500, SSE307*A, SSE307*A1500, SSG109*A, SSG119*A and SSG309*A)

REF	PART #	DESCRIPTION	COMMENTS
1	501307	Washer	
2	502431	Screw	
3	29796	Nut	
4	29651	Bolt	
5	523P3	Coin Funnel Kit	
6	80077	Caged Nut	
7	503661	Screw	
8	503541*	Control Cabinet Wrapper	
9	503688	Screw	
10	32671	Screw	
11	56079	Locator	
12	500001*P	Cabinet	Lower Dryer
13	503656*	Front Panel	Lower Dryer
14	500847*	Control Cabinet Front	
15	500070	Base	Upper Dryer

* Add Letter To Designate Color. L – Almond W – White

Control Cabinet (Coin Drop)

(Models SSE407*A, SSE407*A1500, SSE407*D, SSE407*D1500, SSE417*A, SSE417*D, SSE507*A, SSE507*A1500, SSE517*A, SSE517*A1500, SSG409*A, SSG409*D, SSG419*A, SSG419*D, SSG509*A and SSG519*A)



D354PZ3A

* Add Letter to Designate Color. L – Almond W – White

Control Cabinet (Coin Drop)

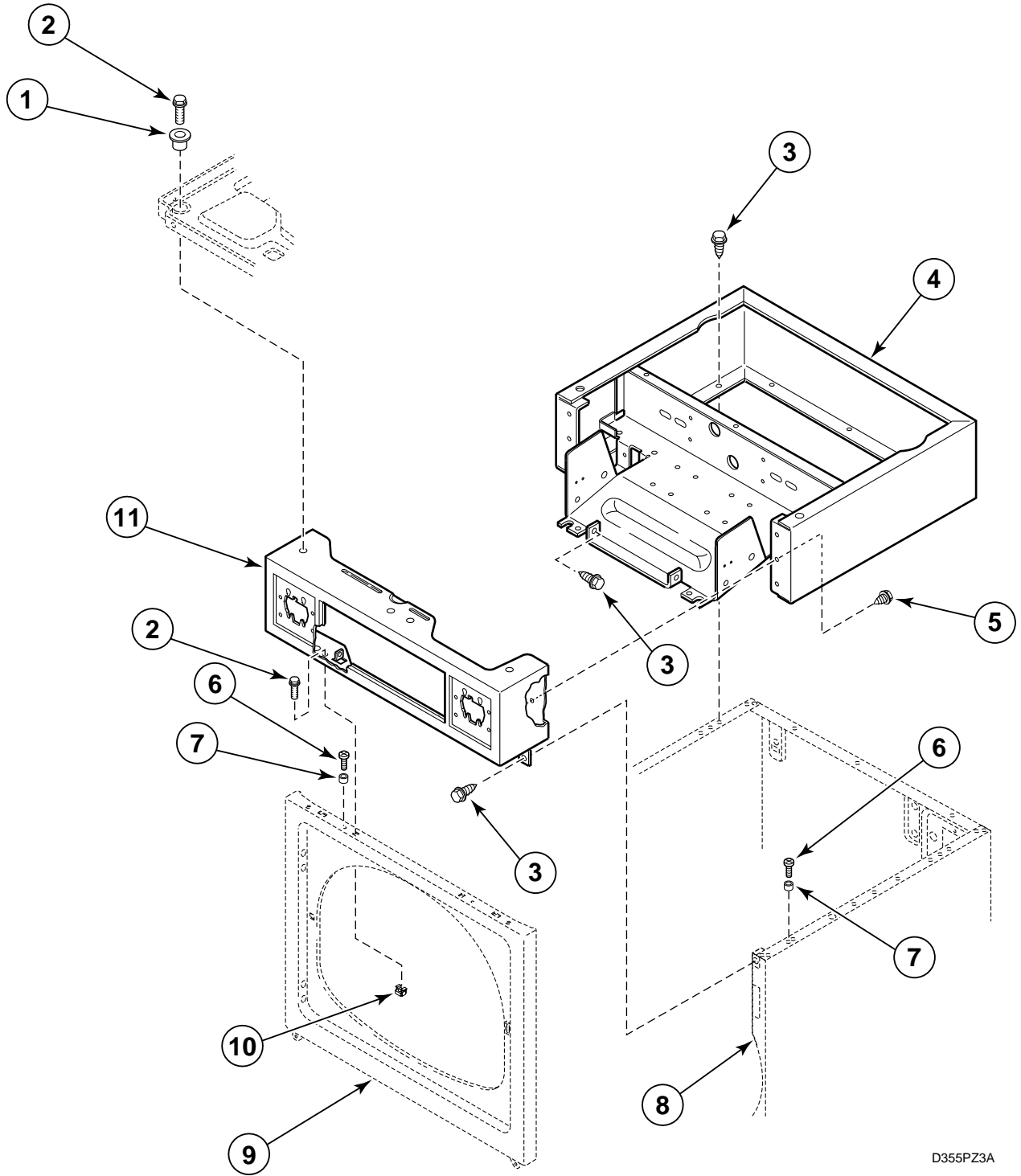
(Models SSE407*A, SSE407*A1500, SSE407*D, SSE407*D1500, SSE417*A, SSE417*D, SSE507*A, SSE507*A1500, SSE517*A, SSE517*A1500, SSG409*A, SSG409*D, SSG419*A, SSG419*D, SSG509*A and SSG519*A)

REF	PART #	DESCRIPTION	COMMENTS
1	501307	Washer	
2	502431	Screw	
3	80077	Caged Nut	
4	504570	Switch	
5	38087	Bracket	
6	503688	Screw	
7	503661	Screw	
8	503541*	Control Cabinet Wrapper	
9	32671	Screw	
10	56079	Locator	
11	500001*P	Cabinet	Lower Dryer
12	503656*	Front Panel	Lower Dryer
13	503761*	Control Cabinet Front	

* Add Letter To Designate Color. L – Almond W – White

Control Cabinet (Card Reader Ready)

(Models SSE607*C, SSE607*C1500, SSE607*D, SSE607*D1500, SSE617*C, SSE617*D, SSG609*C, SSG609*D, SSG619*C and SSG619*D)



D355PZ3A

* Add Letter to Designate Color. L – Almond W – White

Control Cabinet (Card Reader Ready)

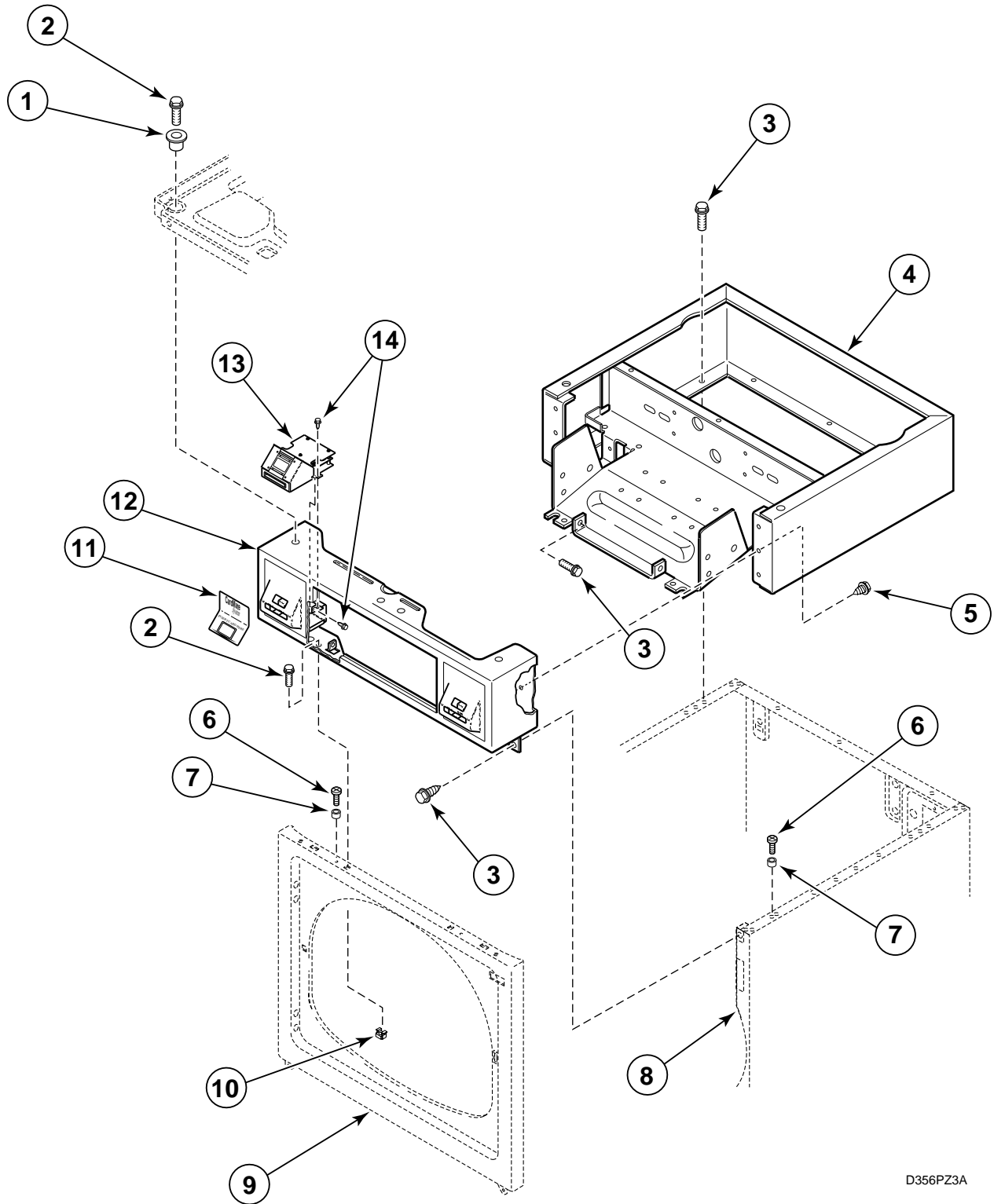
(Models SSE607*C, SSE607*C1500, SSE607*D, SSE607*D1500, SSE617*C, SSE617*D, SSG609*C, SSG609*D, SSG619*C and SSG619*D)

REF	PART #	DESCRIPTION	COMMENTS
1	501307	Washer	
2	502431	Screw	
3	503661	Screw	
4	503541*	Control Cabinet Wrapper	
5	503688	Screw	
6	32671	Screw	
7	56079	Locator	
8	500001*P	Cabinet	Lower Dryer
9	503656*	Front Panel	Lower Dryer
10	80077	Caged Nut	
11	505227*	Control Cabinet Front	

* Add Letter To Designate Color. L – Almond W – White

Control Cabinet (Card Reader Installed)

(Models SSE707*A, SSE717*A, SSG709*A and SSG719*A)



D356PZ3A

* Add Letter to Designate Color. L – Almond W – White

Control Cabinet (Card Reader Installed)

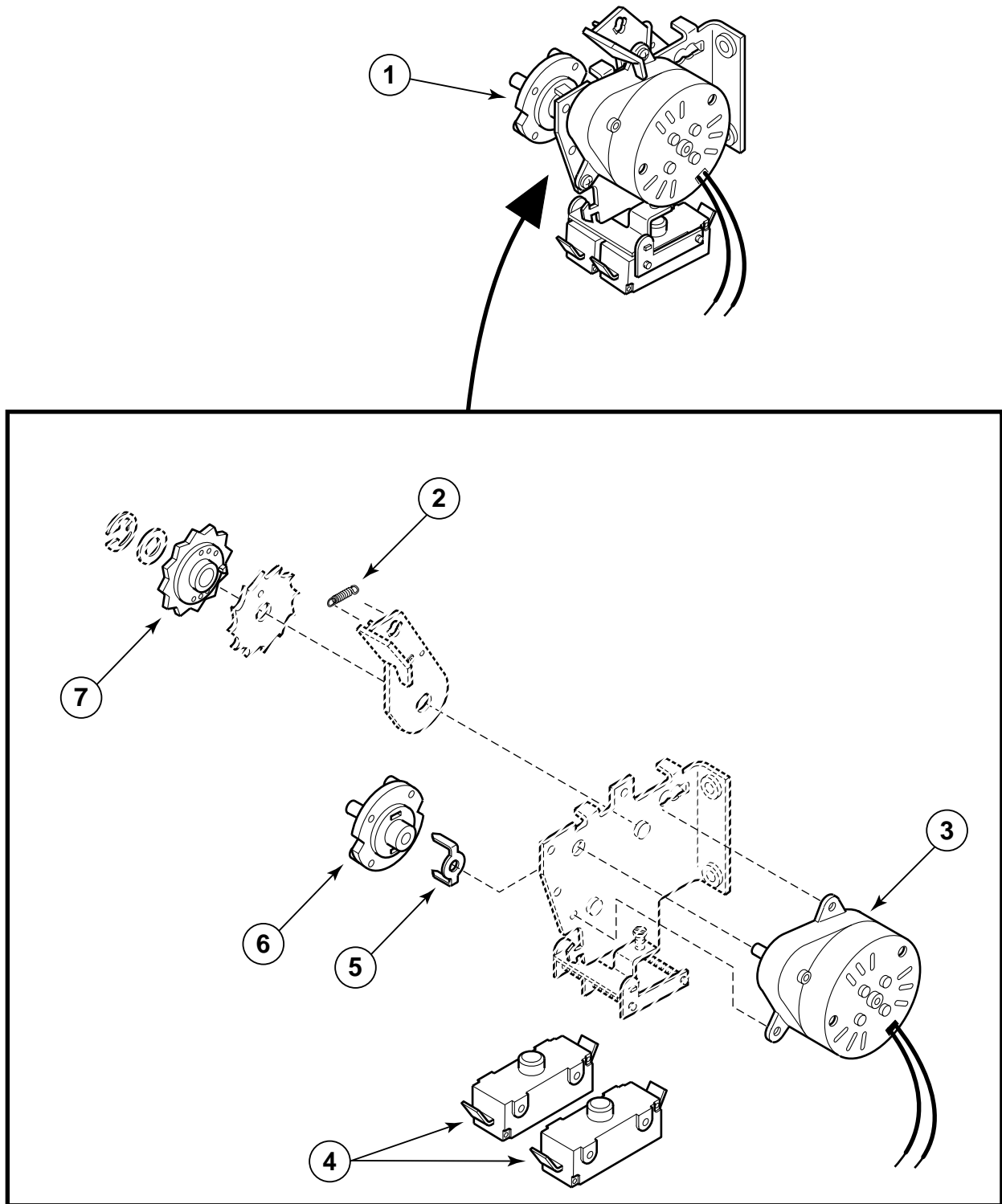
(Models SSE707*A, SSE717*A, SSG709*A and SSG719*A)

REF	PART #	DESCRIPTION	COMMENTS
1	501307	Washer	
2	502431	Screw	
3	503661	Screw	
4	503541*	Control Cabinet Wrapper	
5	503688	Screw	
6	32671	Screw	
7	56079	Locator	
8	500001*P	Cabinet	Lower Dryer
9	503656*	Front Panel	Lower Dryer
10	80077	Caged Nut	
11	38192	Label	
12	503428*	Control Cabinet Front	
13	39685	Card Reader	
14	503661	Screw	

* Add Letter To Designate Color. L – Almond W – White

Two Switch Timer

(Models HSE117*A, HSE117*C, HSG119*A, HSG119*C, SSE107*A, SSE107*A1500, SSE117*A, SSE117*A1500, SSG109*A and SSG119*A)



D362PZ3A

* Add Letter to Designate Color. L – Almond W – White

Two Switch Timer

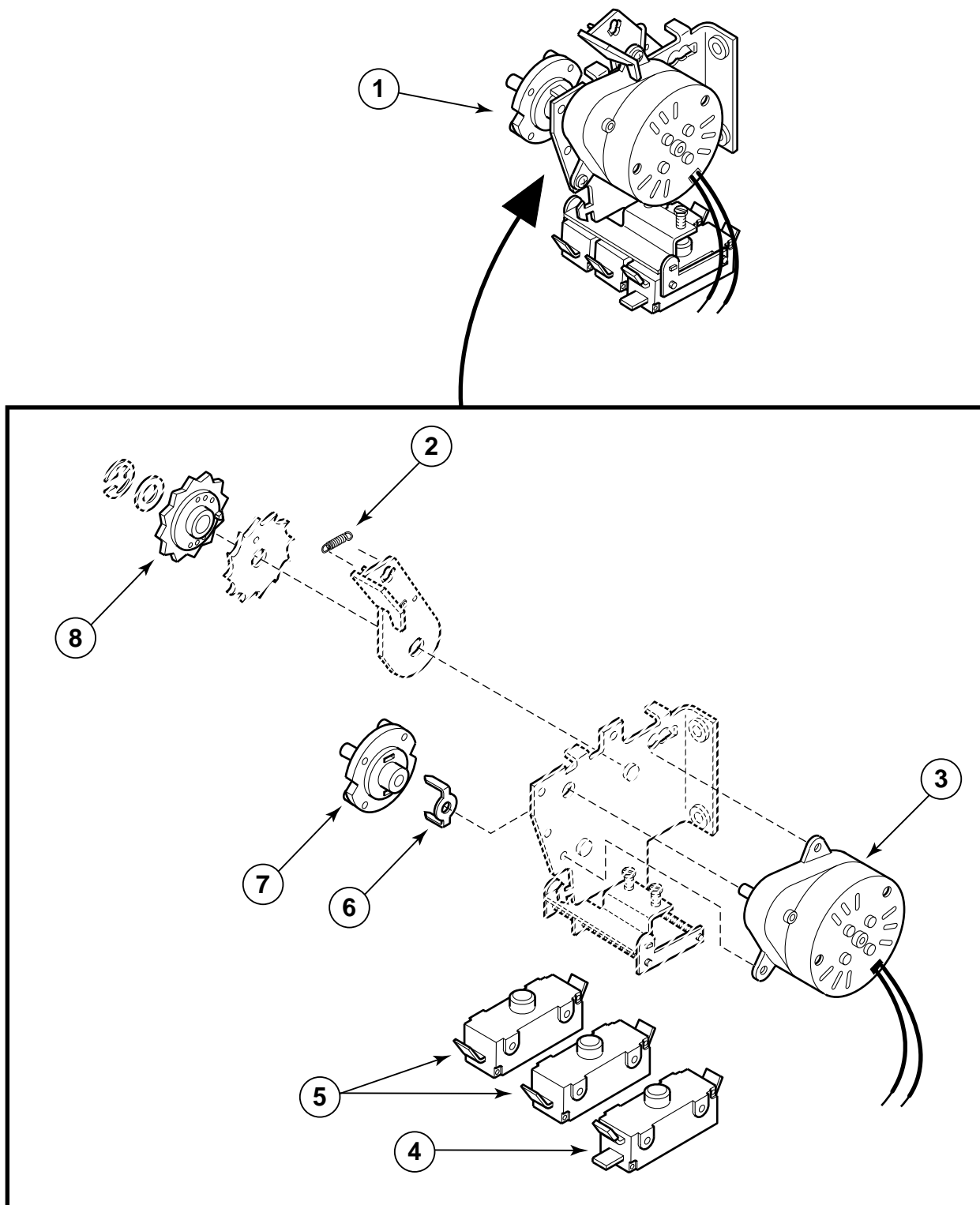
(Models HSE117*A, HSE117*C, HSG119*A, HSG119*C, SSE107*A, SSE107*A1500,
SSE117*A, SSE117*A1500, SSG109*A and SSG119*A)

REF	PART #	DESCRIPTION	COMMENTS
1	59228	Timer Assembly	
2	53244	Pawl Spring	
3	53235P	Timing Motor	
4	53236	Switch	
5	M400754	Timing Cam Drive	
6	53240	Timing Cam	60 Minute (3 Pins)
	53241	Timing Cam	45 Minute (4 Pins)
	53242	Timing Cam	30 Minute (6 Pins)
	53243	Timing Cam	20 Minute (9 Pins)
7	53239	Ratchet Wheel	

* Add Letter To Designate Color. L – Almond W – White

Three Switch Timer

(Models SSE307*A, SSE307*A1500 and SSG309*A)



D363PZ3A

* Add Letter to Designate Color. L – Almond W – White

Three Switch Timer

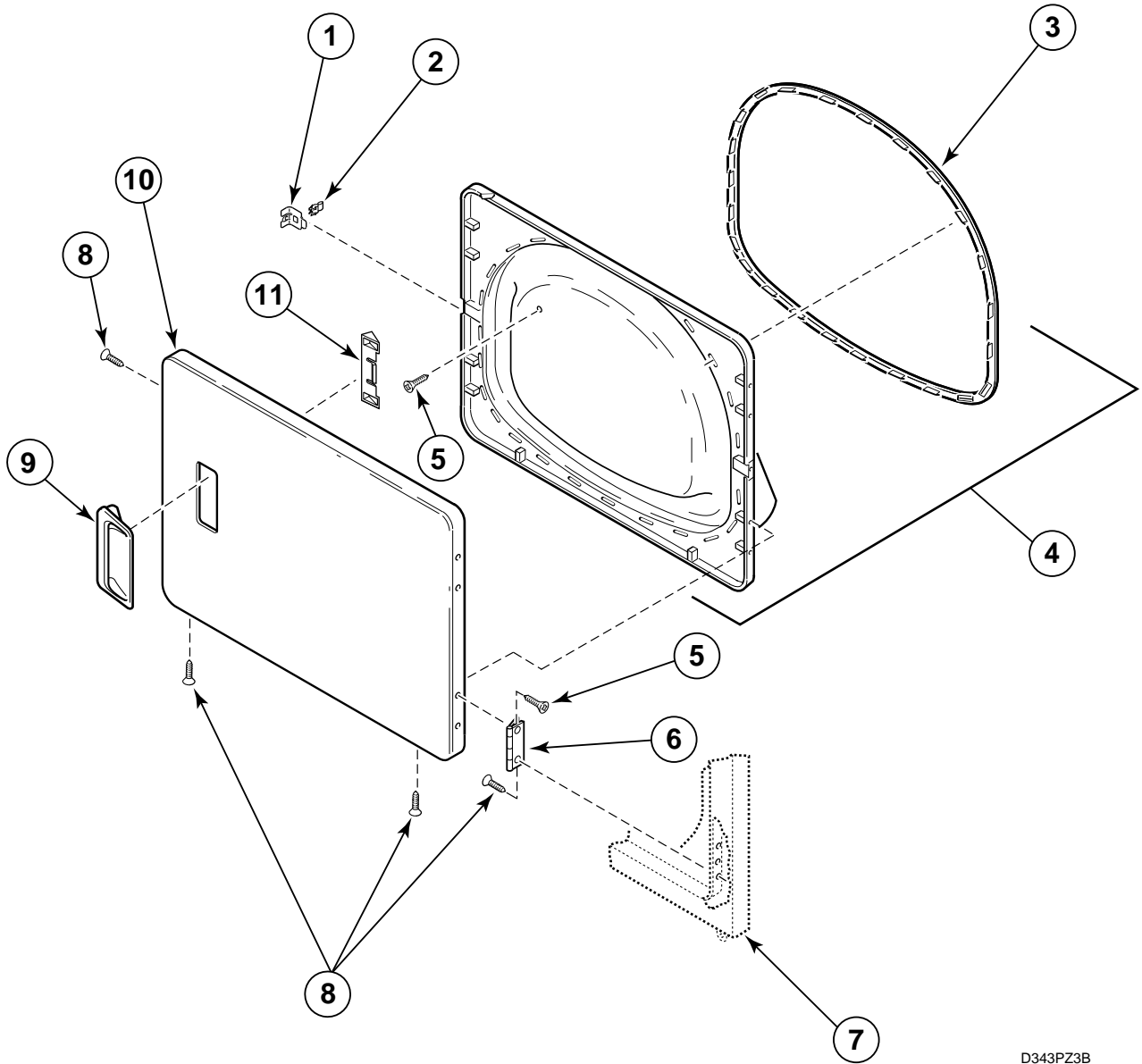
(Models SSE307*A, SSE307*A1500 and SSG309*A)

REF	PART #	DESCRIPTION	COMMENTS
1	61309	Timer	
2	53244	Pawl Spring	
3	53235P	Timing Motor	
4	61468	Switch	
5	53236	Switch	
6	M400754	Timing Cam Drive	
7	53240	Timing Cam	60 Minute (3 Pins)
	53241	Timing Cam	45 Minute (4 Pins)
	53242	Timing Cam	30 Minute (6 Pins)
	53243	Timing Cam	20 Minute (9 Pins)
8	53239	Ratchet Wheel	

* Add Letter To Designate Color. L – Almond W – White

Loading Door

(Models SSE007*A, SSE007*A1500, SSE107*A, SSE107*A1500, SSE307*A, SSE307*A1500, SSE507*A, SSE507*A1500, SSE707*A, SSG009*A, SSG109*A, SSG309*A, SSG509*A, SSG709*A, USE007*A and USG009*A)



D343PZ3B

* Add Letter to Designate Color. L – Almond W – White

Loading Door

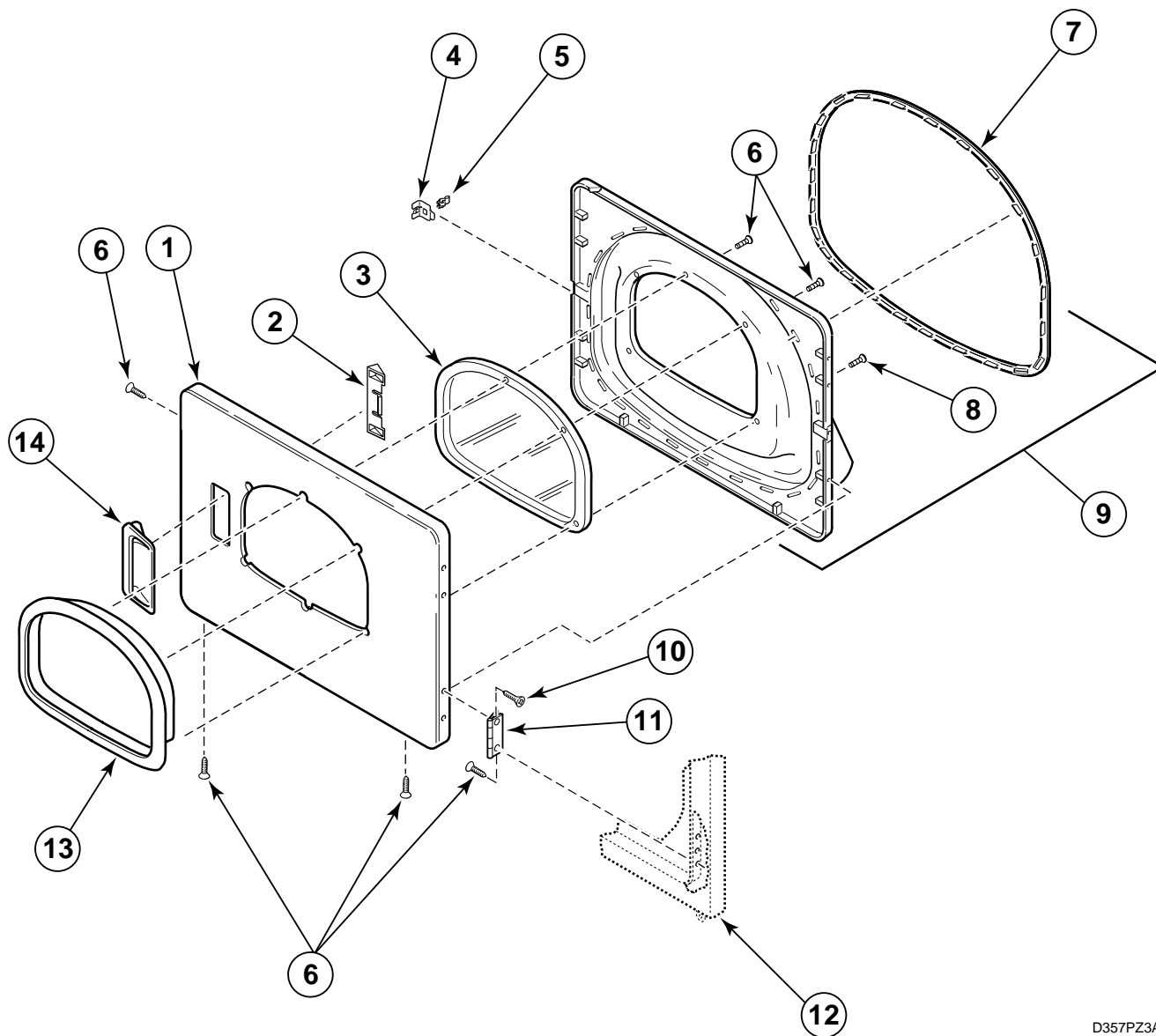
(Models SSE007*A, SSE007*A1500, SSE107*A, SSE107*A1500,
SSE307*A, SSE307*A1500, SSE507*A, SSE507*A1500, SSE707*A,
SSG009*A, SSG109*A, SSG309*A, SSG509*A, SSG709*A, USE007*A and USG009*A)

REF	PART #	DESCRIPTION	COMMENTS
1	500223	Door Striker Bracket	
2	500039	Door Striker	
3	503645	Door Seal	
4	504599W	Inner Door Panel and Seal Assembly	
5	505295	Screw	
6	503676	Door Hinge	
7	503656*	Front Panel	
8	500226	Screw	
9	503646*	Door Pull	
10	503654*	Outer Door Panel	
11	505328	Wedge	
12	503350	Screw	

* Add Letter To Designate Color. L – Almond W – White

Loading Door With Window

(Models HSE117*A, HSE117*C, HSG119*A, HSG119*C, SSE117*A, SSE117*A1500, SSE417*A, SSE417*D, SSE517*A, SSE517*A1500, SSE717*A, SSG119*A, SSG419*A, SSG419*D, SSG519*A and SSG719*A)



D357PZ3A

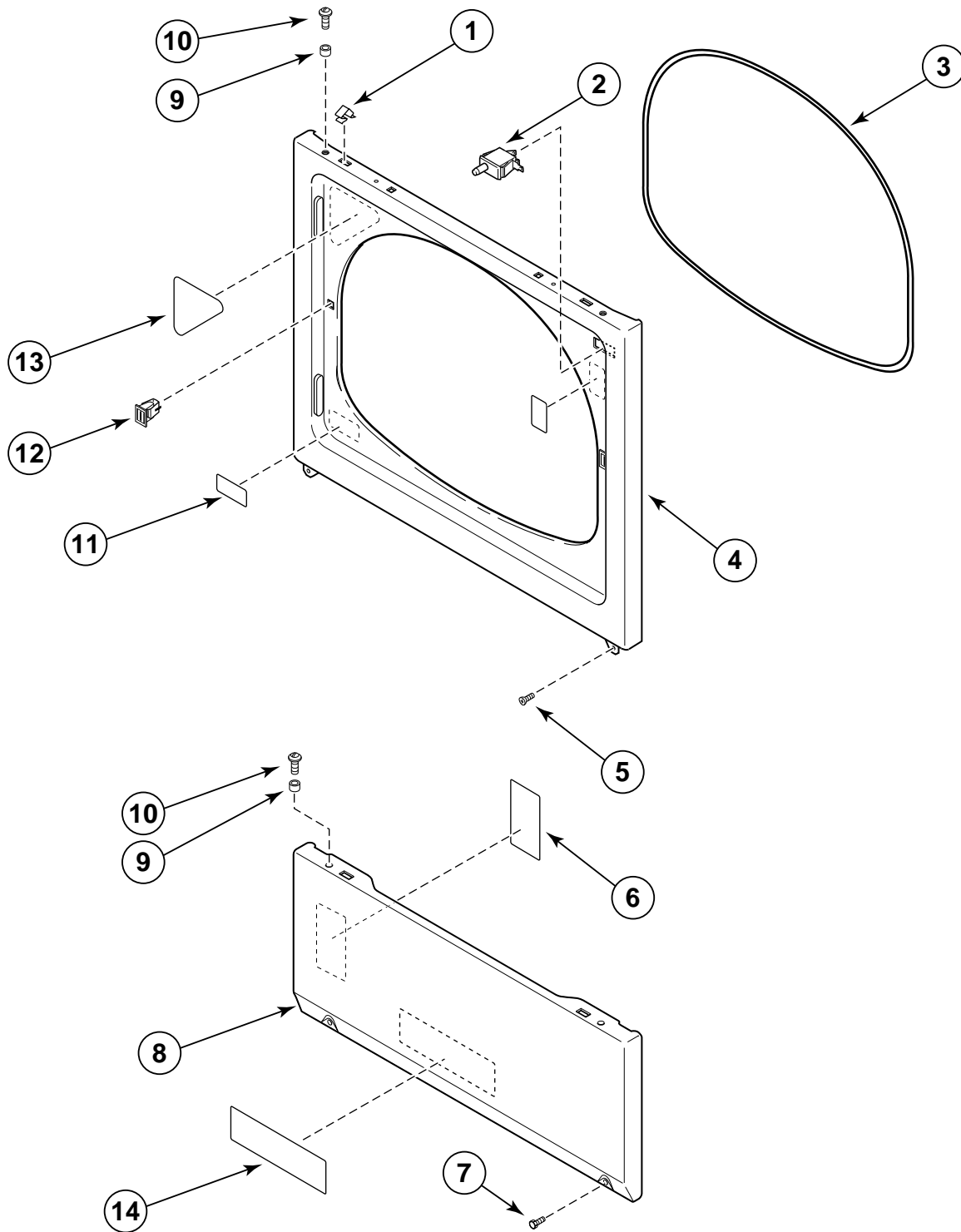
Loading Door With Window

(Models HSE117*A, HSE117*C, HSG119*A, HSG119*C, SSE117*A, SSE117*A1500, SSE417*A, SSE417*D, SSE517*A, SSE517*A1500, SSE717*A, SSG119*A, SSG419*A, SSG419*D, SSG519*A and SSG719*A)

REF	PART #	DESCRIPTION	COMMENTS
1	503655*	Outer Door Panel	
2	505328	Wedge	
3	503982	Window	
4	500223	Door Striker Bracket	
5	500039	Door Striker	
6	500226	Screw	
7	503645	Door Seal	
8	500227	Screw	
9	503871W	Inner Door Panel and Seal Assembly	
10	505295	Screw	
11	503676	Door Hinge	
12	503656*	Front Panel	
13	503981*	Window Trim	
14	503646*	Door Pull	

* Add Letter To Designate Color. L – Almond W – White

Access Panel, Front Panel and Seal



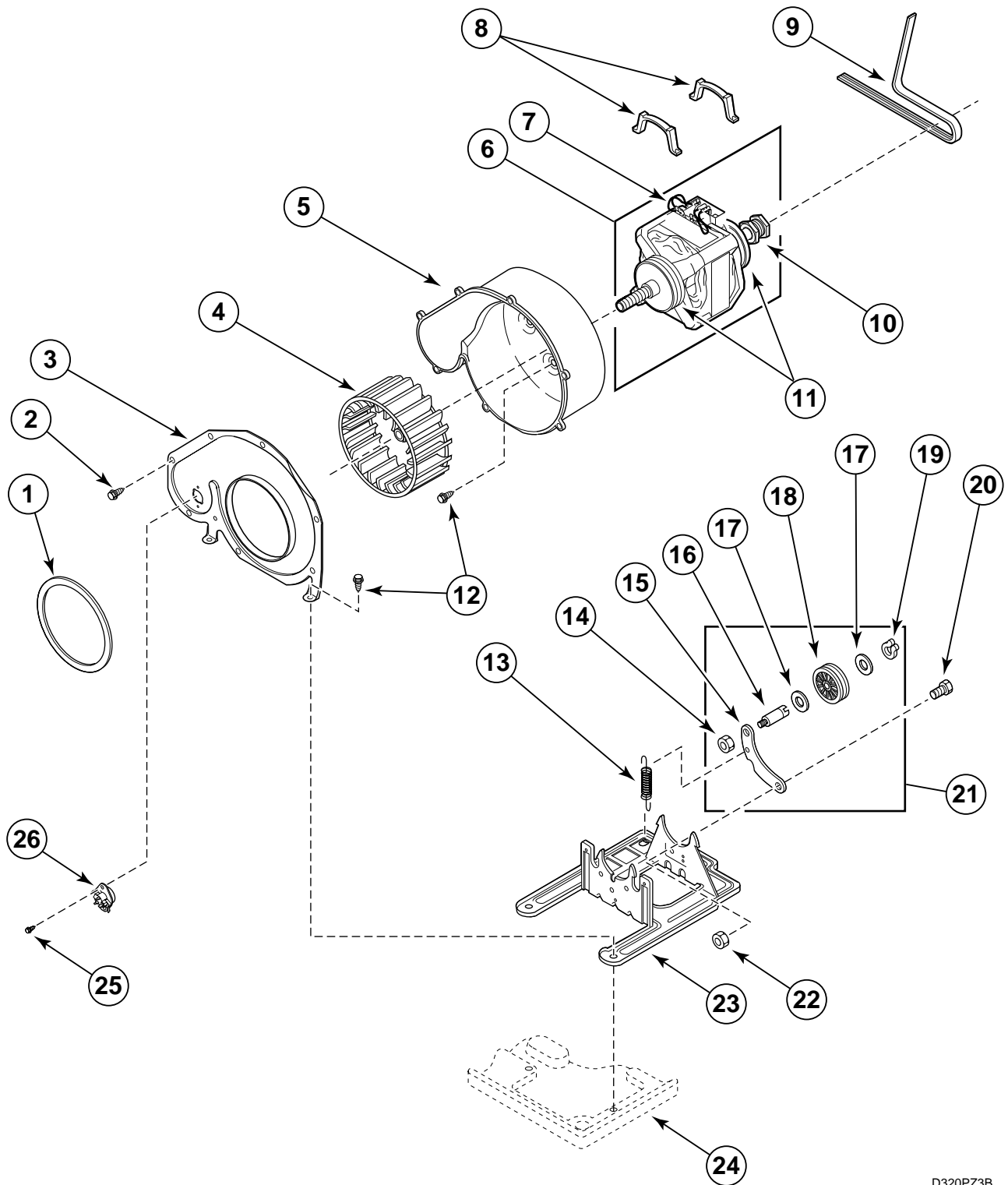
D335PZ3A

Access Panel, Front Panel and Seal

REF	PART #	DESCRIPTION	COMMENTS
	282P4	Torx Bit	Use with 62853 Screw
	24161	Torx Bit Holder	Use with 62853 Screw
1	28835	Hold-Down Clip	Upper Dryer only
2	504570	Door Switch	
3	504005	Front Panel Seal	
4	503656*	Front Panel	
5	503661	Screw	
6	502790	Label	Gas Models
7	33562	Slotted Hex Head Screw	
	62853	Torx Head Screw	Optional for Added Security
8	503796*	Access Panel	
9	56079	Locator	
10	32671	Screw	
11	502804	Label	
12	54660	Door Catch	
13	500281	Label	
14	500390	Label	Models SSE007*A, SSE007*A1500, SSG009*A, USE007*A and USG009*A

* Add Letter To Designate Color. L – Almond W – White

Motor, Exhaust Fan and Belt



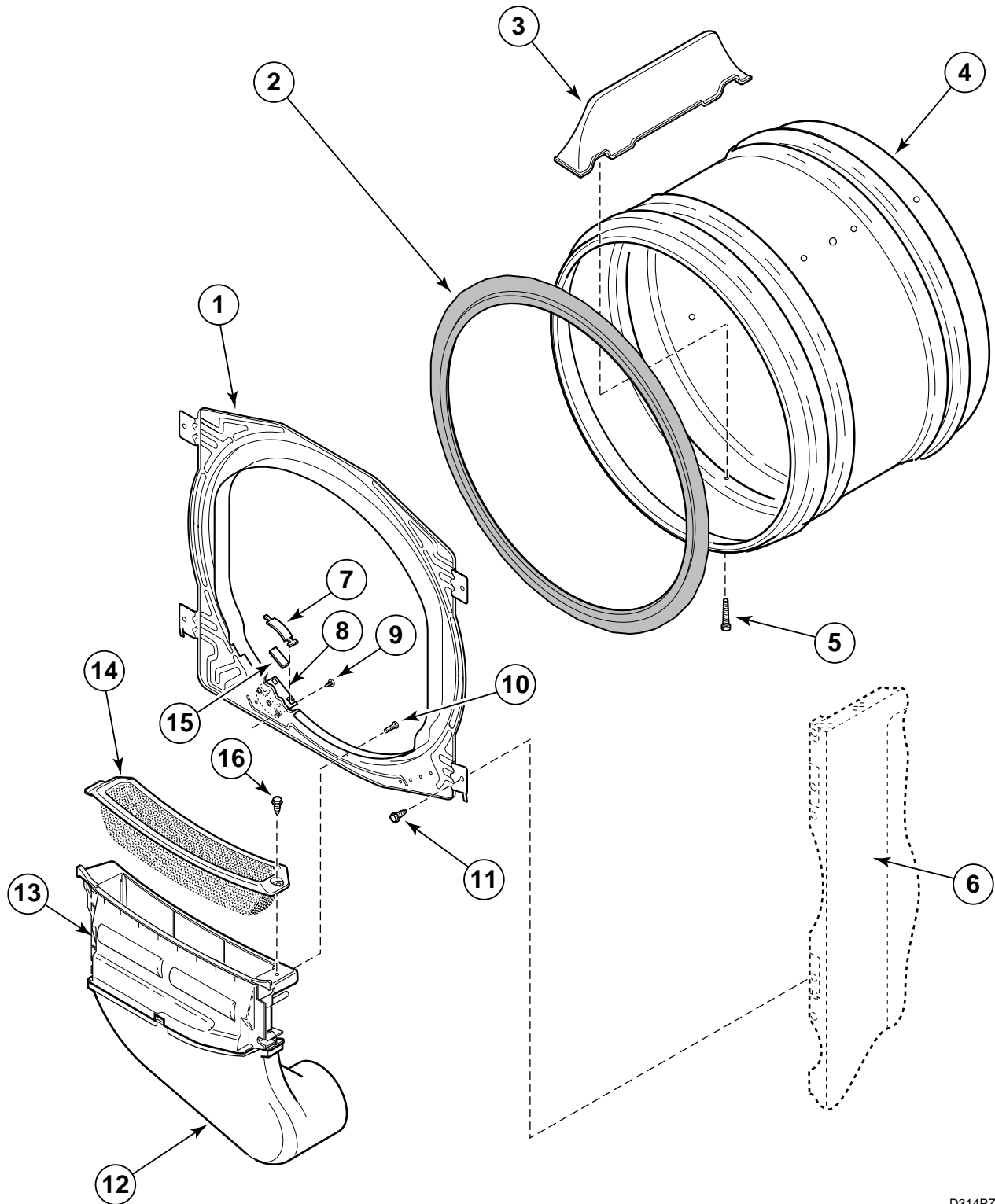
D320PZ3B

Motor, Exhaust Fan and Belt

REF	PART #	DESCRIPTION	COMMENTS
1	504018	Seal	
2	31260	Screw	
3	500078	Exhaust Fan Cover	
4	56000	Exhaust Fan Impeller	
5	56020	Exhaust Fan Housing	
6	502368P	Motor Assembly	Includes 500011 Motor Pulley and 501218 Motor Switch
7	501218P	Motor Switch	Does Not Include Thermal Protector
8	58047	Motor Mounting Clamp	
9	59174	Belt	
10	500011	Motor Pulley	
11	590P3	Motor Hub Ring Kit	
12	503661	Screw	
13	56076	Spring	
14	56156	Locknut	
15	500910	Idler Lever	
16	56461	Shaft	
17	52549	Washer	
18	54414	Idler Pulley	
19	23748	Retainer Ring	
20	500824	Shoulder Screw	
21	500269	Idler Pulley and Lever Assembly	
22	52566	Locknut	
23	503613	Motor Mounting Bracket	
24	500070	Base	
25	33561	Screw	Use with 59500 Thermistor
26	504515	Thermostat	Models HSE117*A, HSE117*C, HSG119*A, HSG119*C, SSE007*A, SSE007*A1500, SSE107*A, SSE107*A1500, SSE117*A, SSE117*A1500, SSE307*A, SSE307*A1500, SSG009*A, SSG109*A, SSG119*A, SSG309*A, USE007*A and USG009*A
	59500	Thermistor	Models SSE417*A, SSE417*D, SSE507*A, SSE507*A1500, SSE517*A, SSE517*A1500, SSE707*A, SSE717*A, SSG419*A, SSG419*D, SSG509*A, SSG519*A, SSG709*A and SSG719*A

* Add Letter To Designate Color. L – Almond W – White

Front Bulkhead, Air Duct, Felt Seal and Cylinder



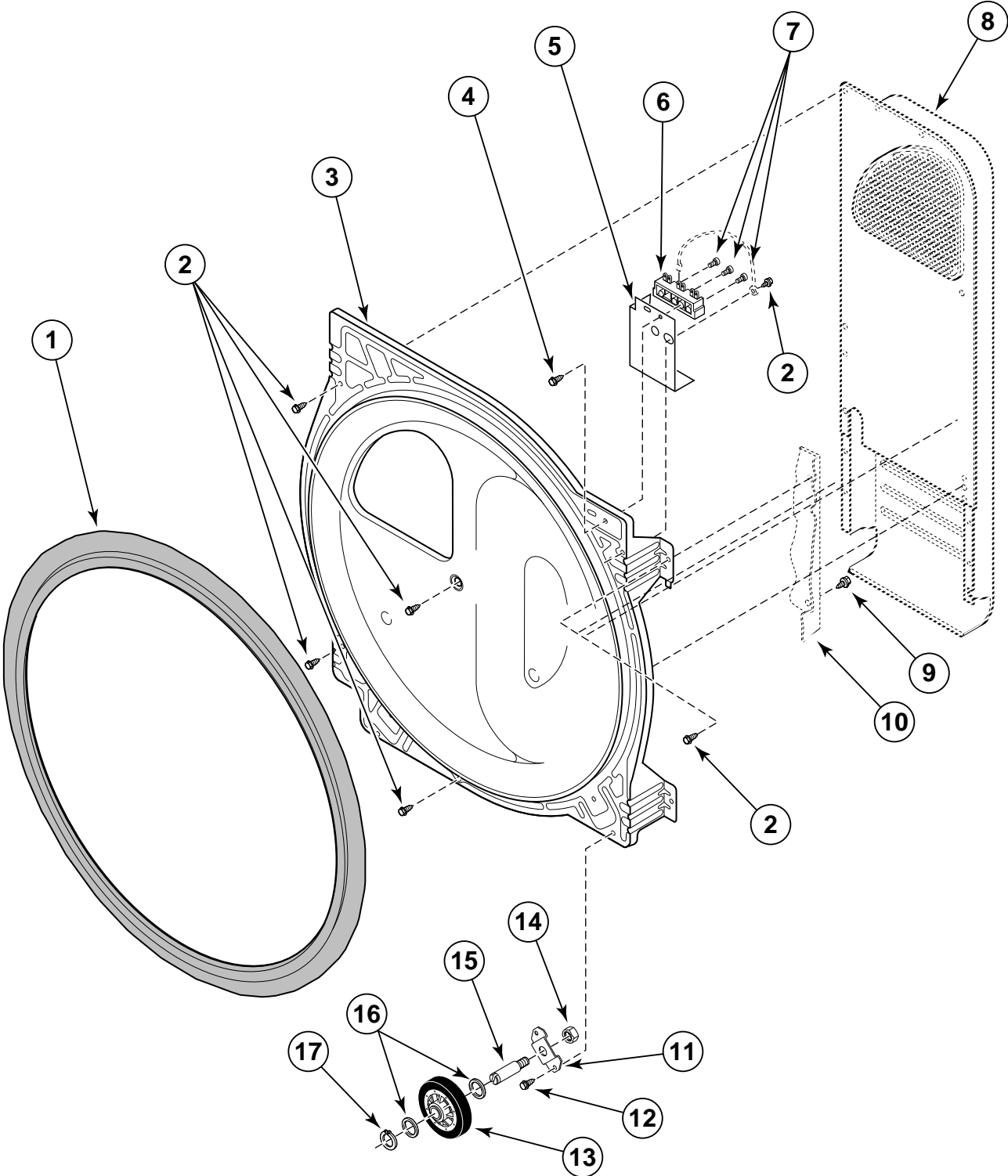
D314PZ3A

Front Bulkhead, Air Duct, Felt Seal and Cylinder

REF	PART #	DESCRIPTION	COMMENTS
	22506P	Adhesive for Cylinder Seal	
1	505058	Front Bulkhead	
2	501801	Cylinder Seal	
3	503703	Baffle	
4	504466P	Cylinder Assembly	Includes Baffles
5	62588	Screw	
6	500001*P	Cabinet	
7	503452	Cylinder Glide	Two Required per Side
8	501554	Glide Bracket	
9	504540	Rivet	
10	500226	Screw	
11	503688	Screw	
12	503626	Lower Air Duct Assembly	
13	505529	Upper Air Duct Assembly	
14	503980	Lint Filter	
15	503453	Felt Pad	
16	501285	Screw	

* Add Letter To Designate Color. L – Almond W – White

Rear Bulkhead, Felt Seal, Cylinder Roller and Terminal Block



D291PZ3B

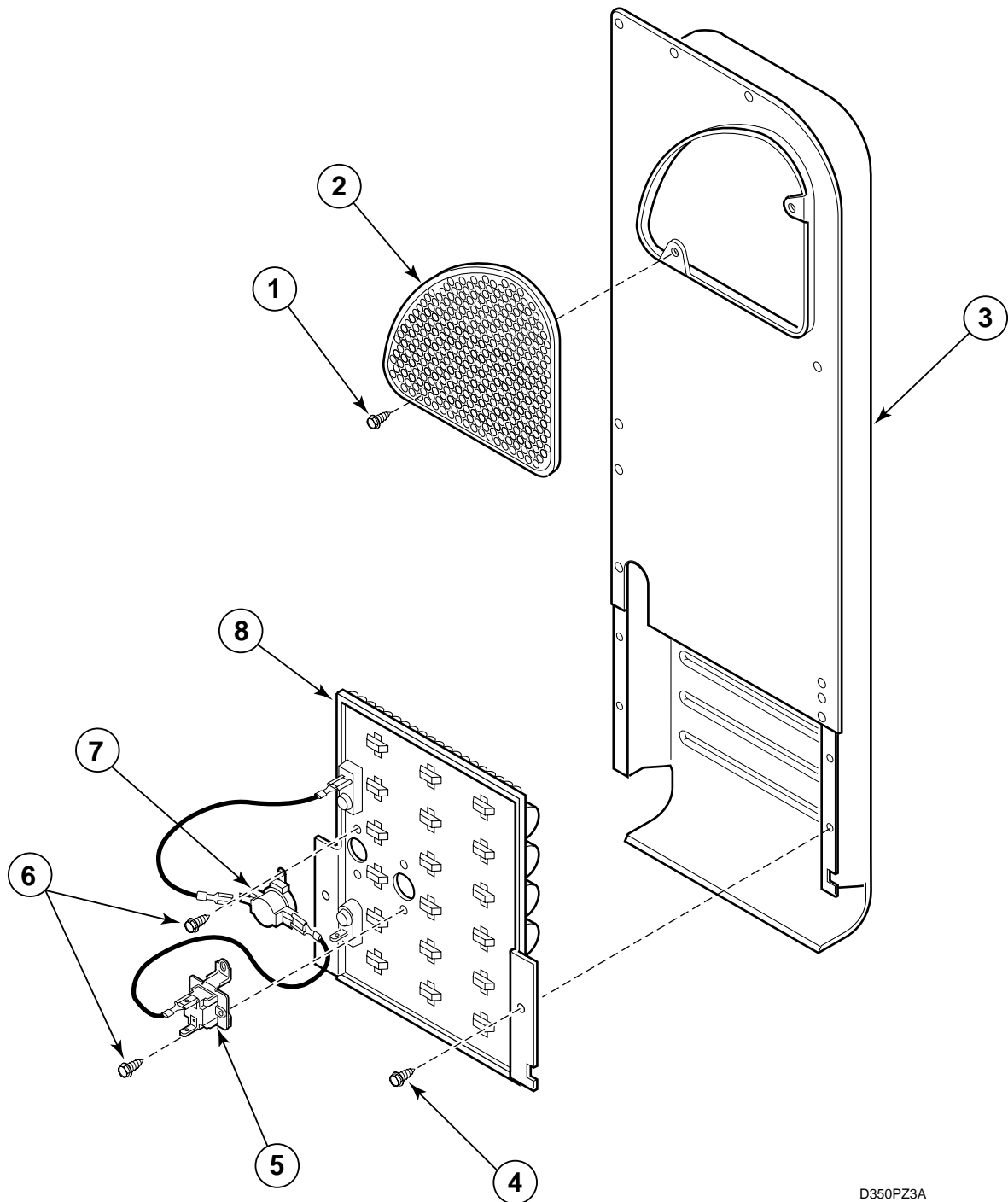
Rear Bulkhead, Felt Seal, Cylinder Roller and Terminal Block

REF	PART #	COMMENTS	COMMENTS
	22506P	Adhesive for Cylinder Seal	
1	501801	Cylinder Seal	
2	503661	Screw	
3	505244	Rear Bulkhead	
4	501285	Screw	
5	504185	Shield	Electric Models only
6	61923P	Terminal Block	Includes Three 61199 Screws – Electric Models
7	61199	Screw	
8	503607P	Heater Duct Assembly	Includes 500820 Outlet Cover
9	503688	Screw	
10	500001*P	Cabinet	
11	500062	Roller Bracket	
12	503688	Screw	
13	500214P	Cylinder Roller	
14	56156	Locknut	
15	56461	Shaft	
16	52549	Washer	
17	23748	Retainer Ring	

* Add Letter To Designate Color. L – Almond W – White

Heater Duct and Element Assembly

(Electric Model Dryers)



D350PZ3A

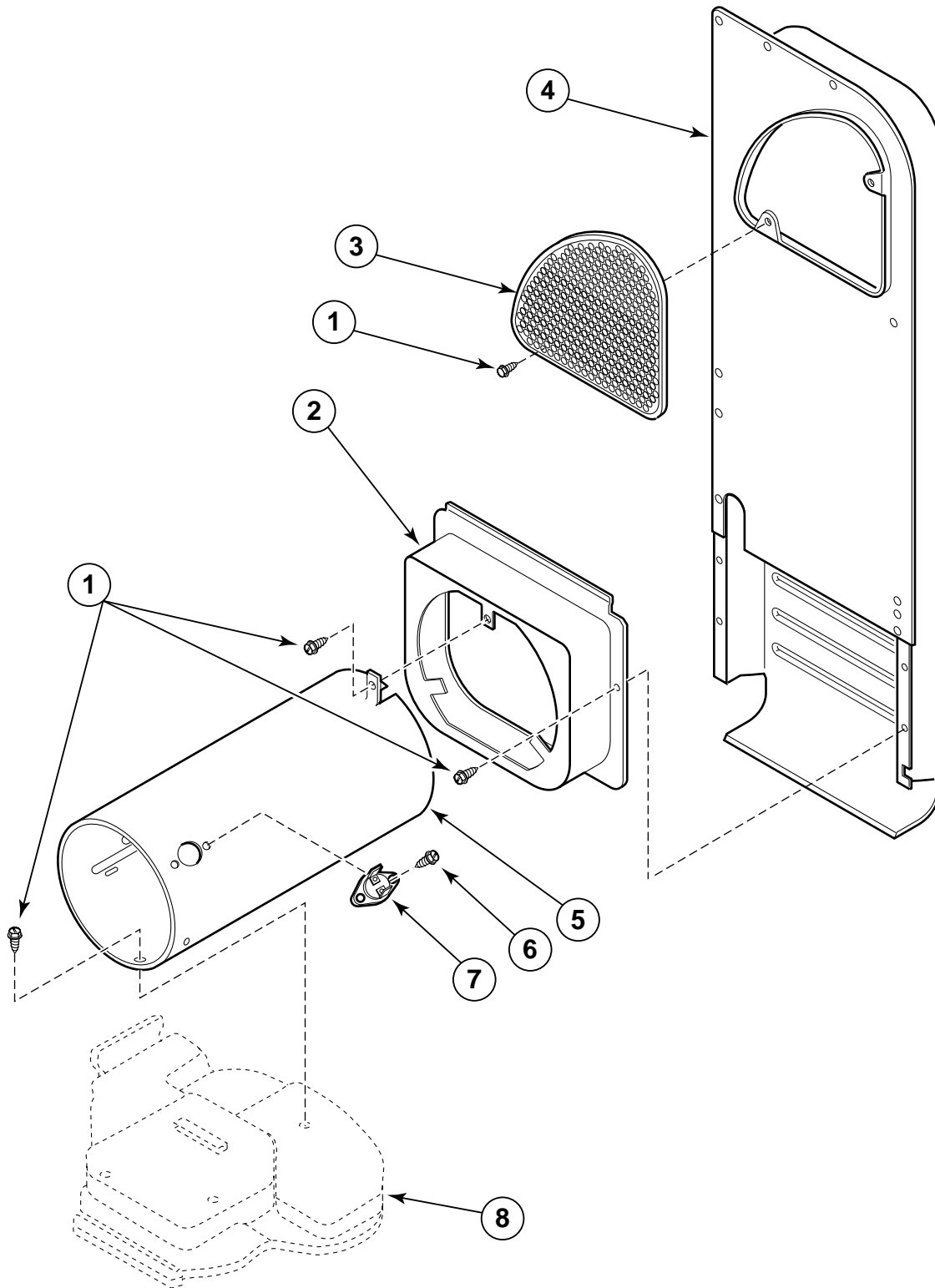
Heater Duct and Element Assembly

(Electric Model Dryers)

REF	PART #	DESCRIPTION	COMMENTS
1	503688	Screw	
2	500820	Outlet Cover	
3	503607P	Heater Duct Assembly	Includes 500820 Outlet Cover
4	503688	Screw	
5	62600	Thermal Fuse	
6	23222	Screw	
7	62641	Limit Thermostat	
8	503978	Heater Assembly	

Heater Duct Assembly

(Gas Model Dryers)



D315PZ3B

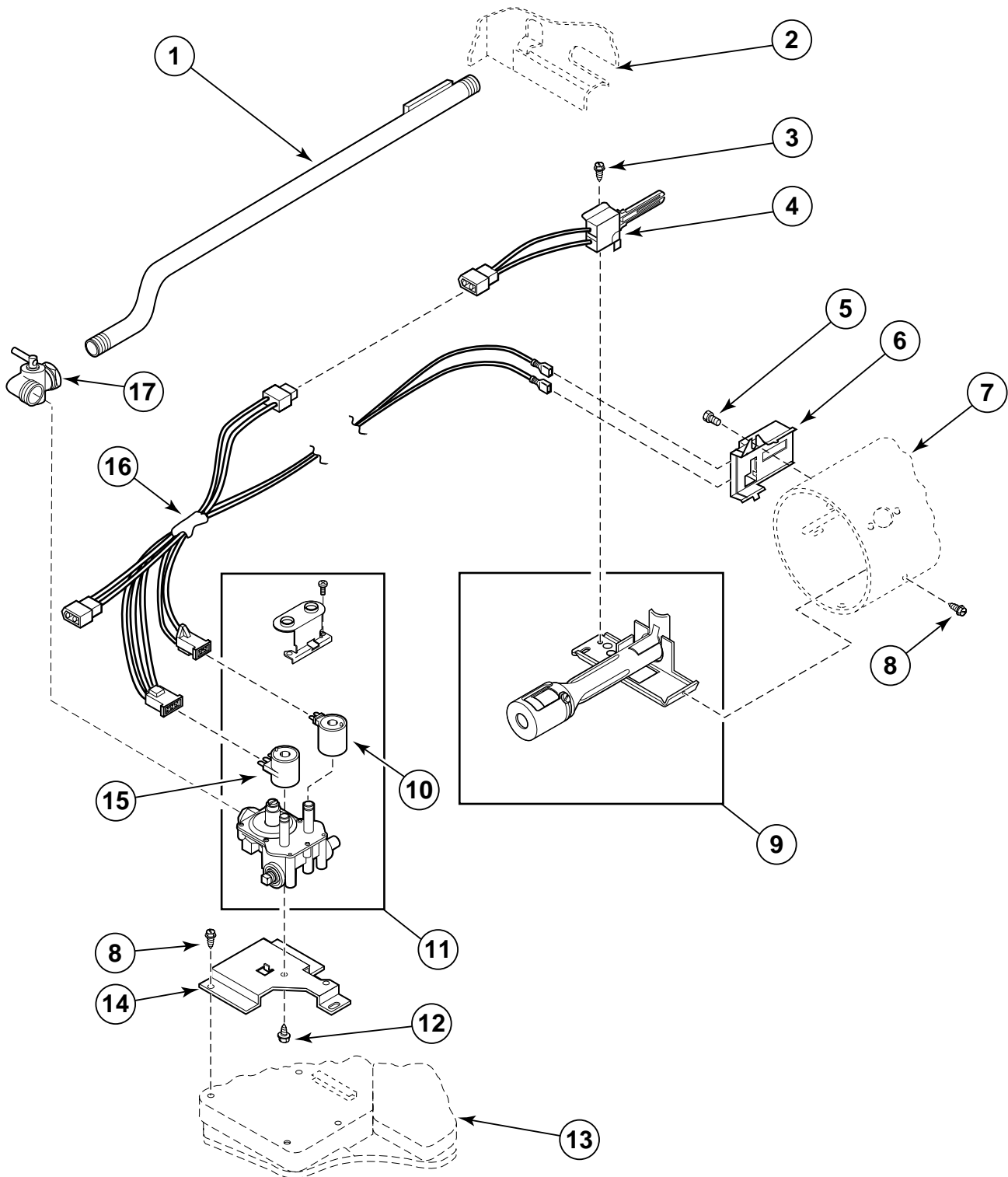
Heater Duct Assembly

(Gas Model Dryers)

REF	PART #	DESCRIPTION	COMMENTS
1	503688	Screw	
2	500122	Heat Shroud	
3	500820	Outlet Cover	
4	503607P	Heater Duct Assembly	Includes 500820 Outlet Cover
5	61888	Combustion Duct	
6	51782	Screw	
7	61886	Limit Thermostat	Color Code "Black"
8	500070	Base	

Gas Valve, Igniter and Gas Conversion Kits

(Gas Model Dryers)



D303PZ3A

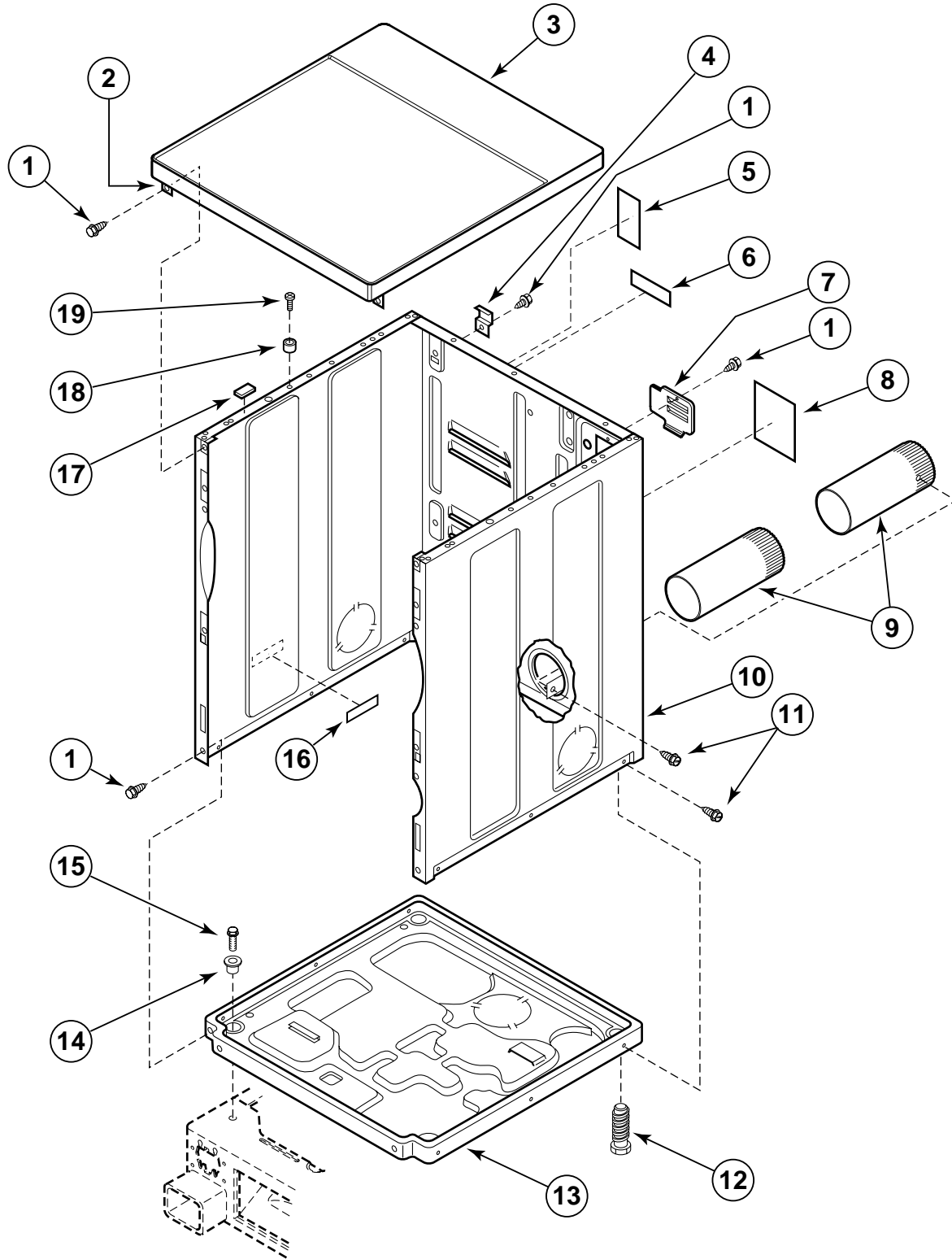
Gas Valve, Igniter and Gas Conversion Kits

(Gas Model Dryers)

REF	PART #	DESCRIPTION	COMMENTS
	458P3	Gas Burner Conversion Kit	Used to convert dryers from Natural/Mixed to LP Gas
	459P3	Gas Burner Conversion Kit	Used to convert dryers from LP to Natural/Mixed Gas
1	500647	Lead-In Pipe Assembly	
2	500001*P	Cabinet	
3	51782	Screw	
4	60868	Igniter and Bracket Assembly	
5	23222	Screw	
6	56231	Sensor	
7	61888	Combustion Duct	
8	503688	Screw	
9	56234	Burner Assembly	
10	58804B	Secondary Coil	
11	60353	Gas Valve Assembly	
12	56124	Screw	
13	500070	Base	
14	500821	Mounting Bracket	
15	58804A	Holding and Booster Coil	
16	60641	Wire Harness	
17	56229	Shut-off Valve	

* Add Letter To Designate Color. L – Almond W – White

Cabinet, Exhaust Duct and Base (Upper Dryer)



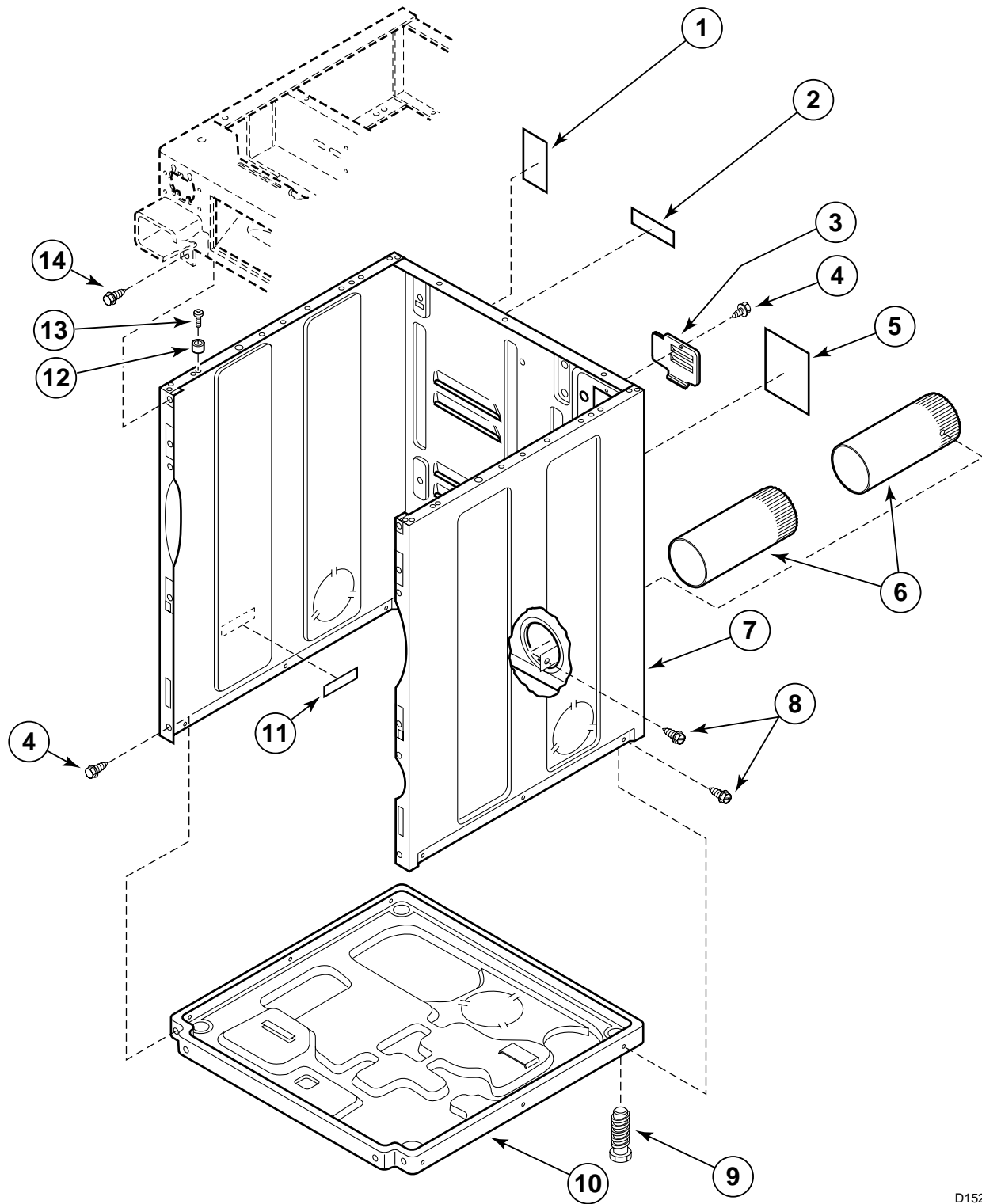
D151PZ3A

Cabinet, Exhaust Duct and Base (Upper Dryer)

REF	PART #	DESCRIPTION	COMMENTS
1	503661	Screw	
2	500084	Bracket	
3	500215*P	Cabinet Top	
4	500003	Hinge	
5	500670	Label	Gas Models
6	56186	Label	
7	500114	Access Plate	
8	501289	Label	Electric Models
9	500064	Exhaust Duct	
10	500001*P	Cabinet	
11	503688	Screw	
12	500101	Leveling Leg	Rear only
13	500070	Base	
14	501307	Washer	
15	502431	Screw	
16	61294	Label	Electric Models
17	56128	Bumper	
18	56079	Locator	
19	32671	Screw	

* Add Letter To Designate Color. L – Almond W – White

Cabinet, Exhaust Duct And Base (Lower Dryer)



D152PZ3A

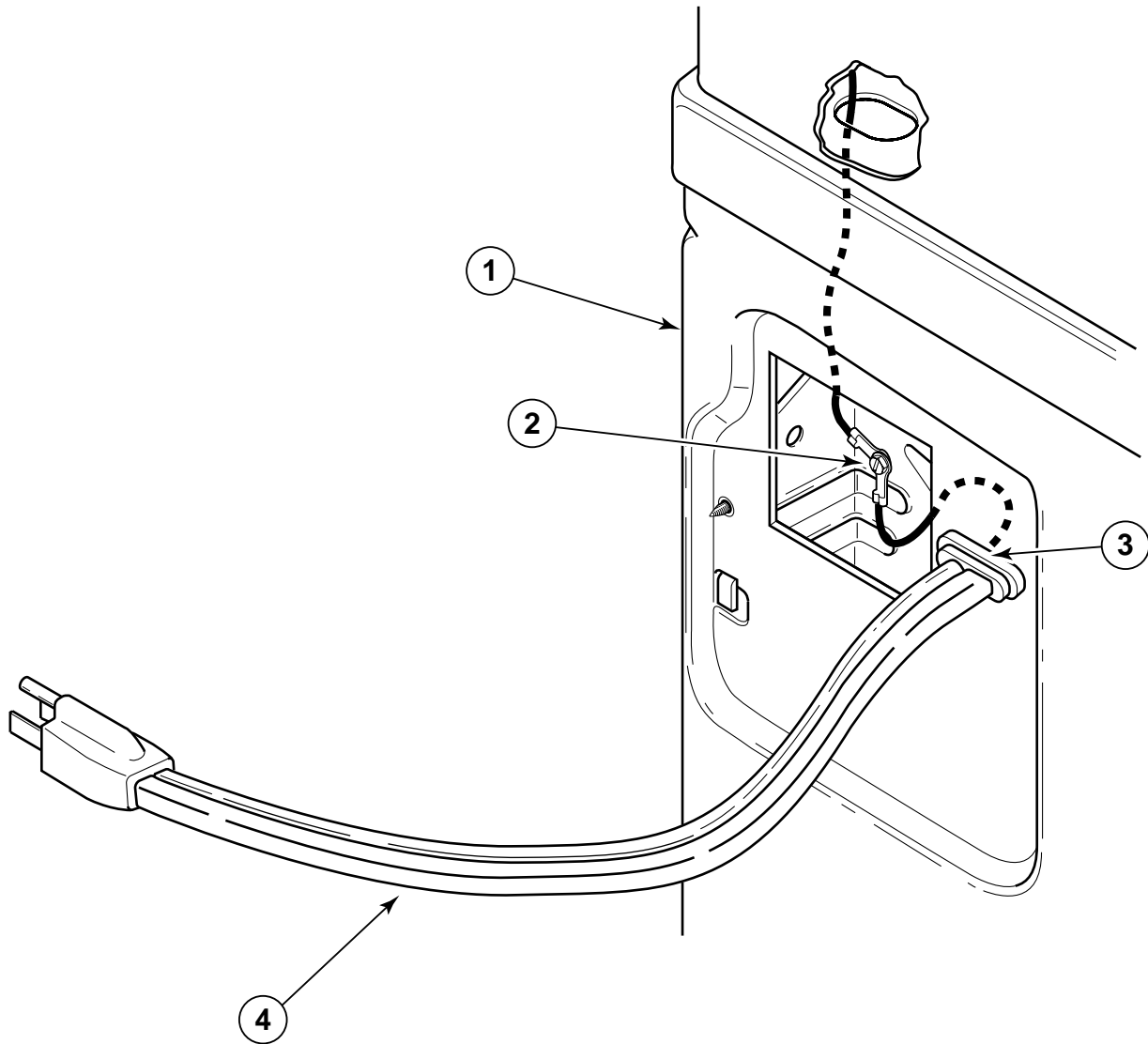
Cabinet, Exhaust Duct and Base (Lower Dryer)

REF	PART #	DESCRIPTION	COMMENTS
1	500670	Label	Gas Models
2	56186	Label	
3	500114	Access Plate	
4	503661	Screw	
5	501286	Label	Electric Models
6	500064	Exhaust Duct	
7	500001*P	Cabinet	
8	503688	Screw	
9	500101	Leveling Leg	
10	500070	Base	
11	61294	Label	Electric Models
12	56079	Locator	
13	32671	Screw	
14	33562	Screw	

* Add Letter To Designate Color. L – Almond W – White

Power Cord

(All Gas Models)



D298PZ3B

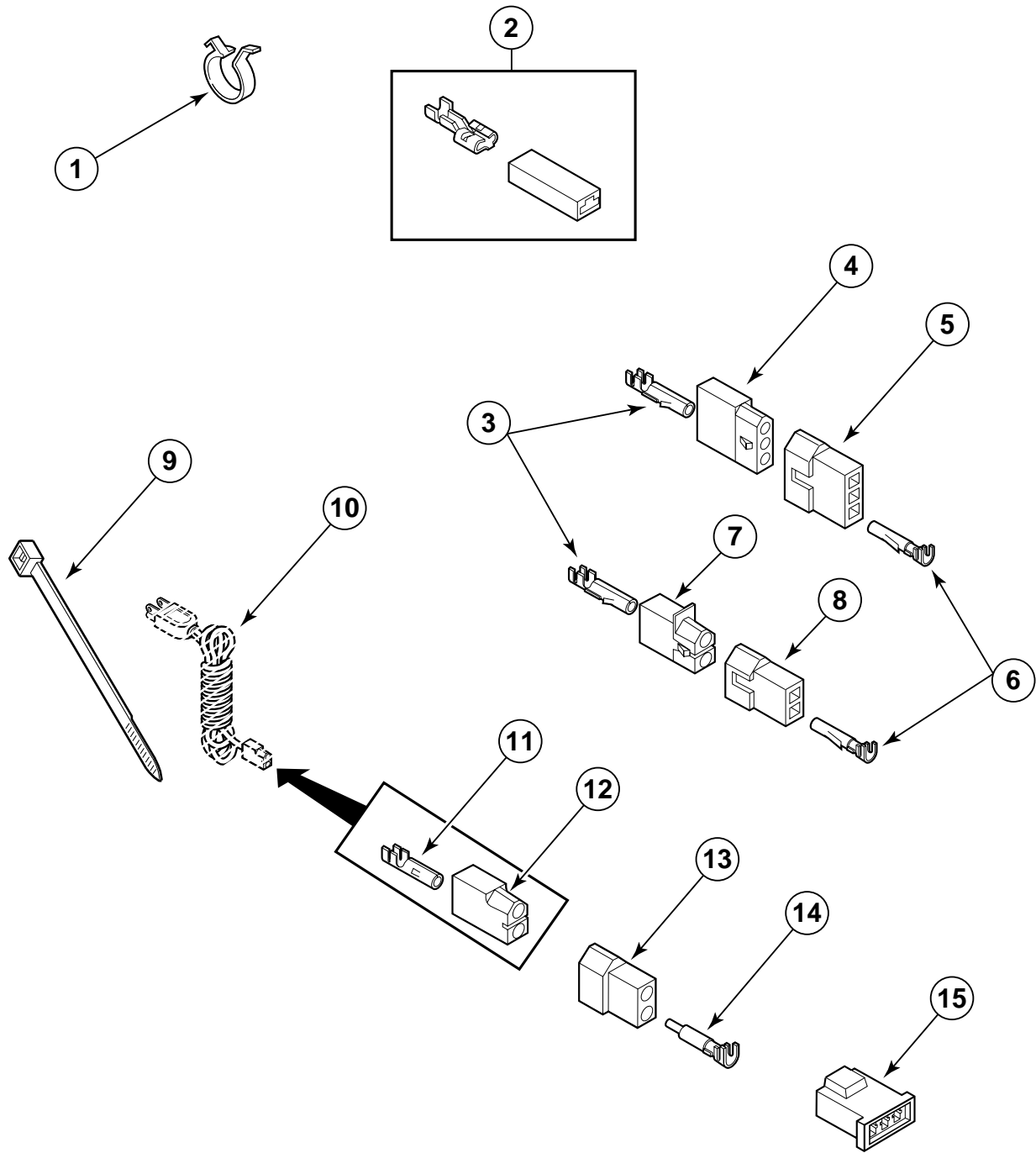
Power Cord

(All Gas Models)

REF	PART #	DESCRIPTION	COMMENTS
1	500001*P	Cabinet	
2	20530	Screw	
3	38384	Strain Relief	
4	59308	Power Cord	

* Add Letter To Designate Color. L – Almond W – White

Terminal Block and Terminals

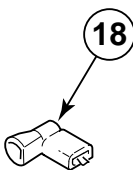
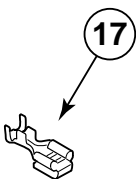
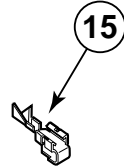
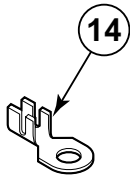
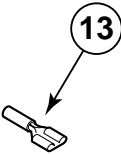
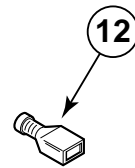
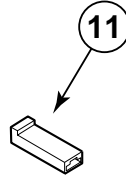
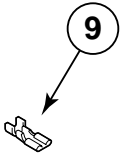
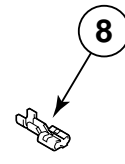
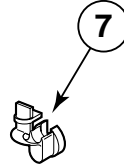
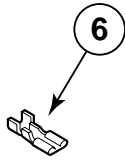
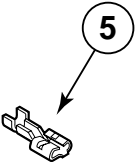
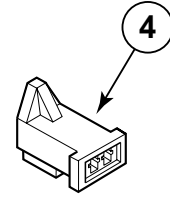
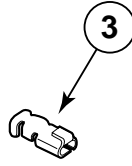
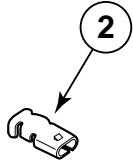
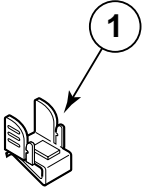


D321PZ3A

Terminal Block and Terminals

REF	PART #	DESCRIPTION	COMMENTS
1	504034	Wire Clip	
2	00237	Insulated 1/4 Inch Spade Terminal	(1) 12 Gauge Wire or (2) 18 Gauge Wires
3	00117	Female Socket Terminal	
4	23039	Terminal Block Receptacle	3 Circuit
5	23040	Terminal Block Plug	3 Circuit
6	00116	Male Pin Terminal	
7	56451	Terminal Block Receptacle	2 Circuit
8	56448	Terminal Block Plug	2 Circuit
9	55881	Wire Tie	
10	59308	Power Cord	Gas Models
11	00130	Female Socket Terminal	
12	56265	Terminal Block Receptacle	2 Circuit
13	56266	Terminal Block Plug	2 Circuit
14	00127	Male Pin Terminal	
15	58800	Terminal Block	3 Circuit Connector

Terminals

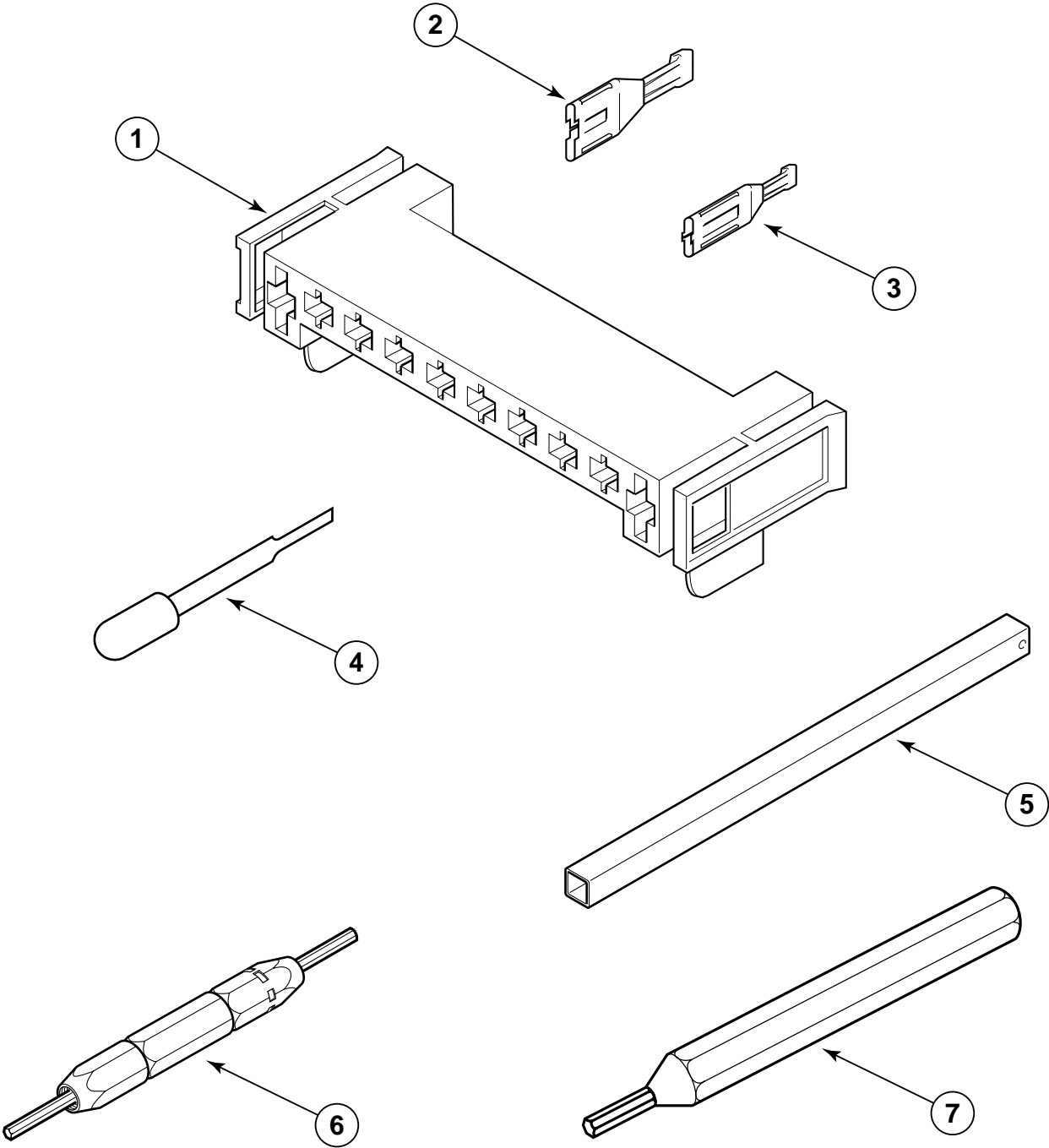


D322PZ3A

Terminals

REF	PART #	DESCRIPTION	COMMENTS
1	00161	Ground Clip	
2	00189	Spade Terminal	
3	00190	Terminal	Receptacle Connector
4	58799	Terminal Block	2 Circuit Connectors
5	00119	Spade Terminal	1/4 Inch – (1) 18 Gauge Wire
	00121	Spade Terminal	1/4 Inch – (2) 18 Gauge Wires or (1) 12 Gauge Wire
	00245	Spade Terminal	1/4 Inch – (1) 22 Gauge Wire
6	00124	Spade Terminal	3/16 Inch – (1) 18 Gauge Wire – .020 Tab
	00156	Spade Terminal	3/16 Inch – Thermostat Wire – .032 Tab
	00209	Spade Terminal	3/16 Inch – (2) 18 Gauge Wires – .020 Tab
7	38384	Strain Relief	
8	00346	Terminal	
9	00347	Terminal	
10	00115	Lock In Spade Terminal	1/4 Inch – (1) 18 Gauge Wire
	00122	Lock In Spade Terminal	1/4 Inch – (2) 18 Gauge Wires or (1) 12 Gauge Wire
11	90789	Connector	
12	00163	Insulated Spade Terminal	1/4 Inch
	00165	Insulated Spade Terminal	3/16 Inch
13	00214	Barrel Insulated Spade Terminal	1/4 Inch – 18 Gauge Wire
	00215	Barrel Insulated Spade Terminal	1/4 Inch – 12 Gauge Wire
14	00110	Ring Terminal #10	(1) 18 Gauge Wire
	00111	Ring Terminal #10	(2) 18 Gauge Wires or (1) 12 Gauge Wire
15	00114	Spade Terminal	1/4 Inch – Double Connector
16	00138	Male Tab Terminal	1/4 Inch – (1) 18 Gauge Wire
	00139	Male Tab Terminal	1/4 Inch – (2) 18 Gauge Wires or (1) 12 Gauge Wire
17	00344	Terminal	
18	00345	Terminal	

Motor Connection Block, Terminal Extractor Tools



D319PZ3A

Motor Connection Block, Terminal Extractor Tools

REF	PART #	DESCRIPTION	COMMENTS
1	500338	Motor Connection Block	Molex – 10 Circuit
2	00255	Spade Terminal	1/4 Inch – For (1) 12 Gauge Wire
	00256	Spade Terminal	1/4 Inch – For (1) or (2) 18 Gauge Wires
3	00188	Molex Terminal	For One or Two Wire Applications
4	283P4	Terminal Extractor Tool	For Use on Molex Connectors
5	310P4	Ratchet Extension Tool	1/4 Inch – For Coin Drop Installation
6	190P4	Terminal Extractor Tool	For Use on Electric Dryer Terminals
7	128P4	Terminal Extractor Tool	For Use on Gas Dryer Terminals

Wire Harnesses and Wires

Individual wires are not available separately. Order complete wire harness, or order wire by the foot. See chart at bottom of page.

MODEL NUMBER	UPPER WIRE HARNESS	LOWER WIRE HARNESS	SECURITY CABINET WIRE HARNESS 1†	SECURITY CABINET WIRE HARNESS 2†
HSE117*A	504703	504730	500867	59296
HSE117*C	504703	504730	500867	59296
HSG119*A	500827	500828	500961	59296
HSG119*C	500827	500828	500961	59296
SSE007*A	504703	504728	500954	-
SSE007*A1500	504703	504728	500954	-
SSE107*A	504703	504730	500867	59296
SSE107*A1500	504703	504730	500867	59296
SSE117*A	504703	504730	500867	59296
SSE117*A1500	504703	504730	500867	59296
SSE307*A	504703	504730	500867	62672
SSE307*A1500	504703	504730	500867	62672
SSE407*A	505099	504695	501378	503680
SSE407*A1500	505099	504695	501378	503680
SSE407*D	505099	504695	501378	503680
SSE407*D1500	505099	504695	501378	503680
SSE417*A	505099	504695	501378	503680
SSE417*D	505099	504695	501378	503680
SSE507*A	505099	504695	501378	503680
SSE507*A1500	505099	504695	501378	503680
SSE517*A	505099	504695	501378	503680
SSE517*A1500	505099	504695	501378	503680
SSE607*C	505099	504695	501378	39492
SSE607*C1500	505099	504695	501378	39492
SSE607*D	505099	504695	501378	39492
SSE607*D1500	505099	504695	501378	39492
SSE617*C	505099	504695	501378	39492
SSE617*D	505099	504695	501378	39492

* Add Letter To Designate Color. L – Almond W – White

continued

† Security Cabinet Wire Harness

1: Connects Upper Unit to Center Section (One per Stacked Unit)

2: Connects Timer, Coin Drop or Card Reader to Controls (Two per Stacked Unit)

Order the individual wire color and gauge by the part number listed below. Order wire by the foot and terminals and connectors as required. It is recommended when applying terminals to wires that the terminals be soldered to the wires.

IMPORTANT: Always replace wires with proper gauge.

PART NUMBER	WIRE GAUGE	WIRE COLOR
45001	18 Gauge Wire	Black
45380	12 Gauge Wire	Orange

Wire Harnesses and Wires (continued)

Individual wires are not available separately. Order complete wire harness, or order wire by the foot. See chart at bottom of page.

MODEL NUMBER	UPPER WIRE HARNESS	LOWER WIRE HARNESS	SECURITY CABINET WIRE HARNESS 1†	SECURITY CABINET WIRE HARNESS 2†
SSE707*A	505099	504695	501378	38191
SSE717*A	505099	504695	501378	38191
SSG009*A	504720	504727	500963	-
SSG109*A	504702	500828	500961	59296
SSG119*A	500827	500828	500961	59296
SSG309*A	504702	500828	500961	62672
SSG409*A	504722	504698	501374	503680
SSG409*D	504722	504698	501374	503680
SSG419*A	504722	504698	501374	503680
SSG419*D	504722	504698	501374	503680
SSG509*A	504722	504698	501374	503680
SSG519*A	504722	504698	501374	503680
SSG609*C	504722	504698	501374	39492
SSG609*D	504722	504698	501374	39492
SSG619*C	504722	504698	501374	39492
SSG619*D	504722	504698	501374	39492
SSG709*A	504722	504698	501374	38191
SSG719*A	504722	504698	501374	38191
USE007*A	504703	504728	500954	-
USG009*A	504720	504727	500963	-

* Add Letter To Designate Color. L – Almond W – White

† Security Cabinet Wire Harness

1: Connects Upper Unit to Center Section (One per Stacked Unit)

2: Connects Timer, Coin Drop or Card Reader to Controls (Two per Stacked Unit)

Order the individual wire color and gauge by the part number listed below. Order wire by the foot and terminals and connectors as required. It is recommended when applying terminals to wires that the terminals be soldered to the wires.

IMPORTANT: Always replace wires with proper gauge.

PART NUMBER	WIRE GAUGE	WIRE COLOR
45001	18 Gauge Wire	Black
45380	12 Gauge Wire	Orange

* Security Cabinet Wire Harness

1: Connects Upper Unit to Center Section (One per Stacked Unit)

2: Connects Timer, Coin Drop or Card Reader to Controls (Two per Stacked Unit)

Parts Index

A

Access Panel	
503796*	33
Access Plate	
500114	47, 49
Adhesive for Cylinder Seal	
22506P	37, 39

B

Baffle	
503703	37
Barrel Insulated Spade Terminal	
00214	55
00215	55
Base	
500070	17, 35, 43, 45, 47, 49
Belt	
59174	35
Bolt	
29651	17
Bracket	
38087	19
500084	47
Bumper	
56128	47
Burner Assembly	
56234	45

C

Cabinet	
500001*P	15, 17, 19, 21, 23, 37, 39, 45, 47, 49, 51
Cabinet Top	
500215*P	47
Caged Nut	
80077	15, 17, 19, 21, 23
Cam	
27261	5, 7, 9, 11, 13
Card Reader	
39685	23
Coin Funnel Kit	
523P3	17
Coin Slide Guide	
58181	7
Combustion Duct	
61888	43, 45
Connector	
90789	55
Control Cabinet	
503541	5
Control Cabinet Front	
500225*	15
500847*	7, 17
503428*	13, 23
503761*	9, 19
505227*	11, 21

Control Cabinet Wrapper	
503541*	7, 9, 11, 13, 15, 17, 19, 21, 23
Control Knob Assembly	
35182	5, 7
Control Panel	
500228*	5, 7
501346*	9, 11, 13
Control Panel Overlay	
504590	5, 7
Counter Kit	
62113P	7
Cylinder Assembly	
504466P	37
Cylinder Glide	
503452	37
Cylinder Roller	
500214P	39
Cylinder Seal	
501801	37, 39

D

Door Catch	
54660	33
Door Hinge	
503676	29, 31
Door Pull	
503646*	29, 31
Door Seal	
503645	29, 31
Door Striker	
500039	29, 31
Door Striker Bracket	
500223	29, 31
Door Switch	
504570	33

E

18 Gauge Wire	
45001	58, 59
Electronic Control	
M414050P	9, 11, 13
Exhaust Duct	
500064	47, 49
Exhaust Fan Cover	
500078	35
Exhaust Fan Housing	
56020	35
Exhaust Fan Impeller	
56000	35

F

Fabric Selector Switch	
61512	5, 7
Felt Pad	
503453	37

Female Socket Terminal	
00117	53
00130	53
Front Bulkhead	
505058	37
Front Panel	
503656*	15, 17, 19, 21, 23, 29, 31, 33
Front Panel Seal	
504005	33

G

Gas Burner Conversion Kit	
458P3	45
459P3	45
Gas Valve Assembly	
60353	45
Glide Bracket	
501554	37
Graphic Overlay	
504117	9, 11, 13
Ground Clip	
00161	5, 7, 55

H

Heat Shroud	
500122	43
Heater Assembly	
503978	41
Heater Duct Assembly	
503607P	39, 41, 43
Hex Nut	
52947	5
Hinge	
500003	47
Hold-Down Clip	
28835	33
Holding and Booster Coil	
58804A	45

I

Idler Lever	
500910	35
Idler Pulley	
54414	35
Idler Pulley and Lever Assembly	
500269	35
Igniter and Bracket Assembly	
60868	45
Indicator Light	
32464	5, 7
Inner Door Panel and Seal Assembly	
503871W	31
504599W	29
Insulated Spade Terminal	
00163	55
00165	55
Insulated 1/4 Inch Spade Terminal	
00237	53

K

Knurled Nut	
24205	5, 7

L

Label	
38192	23
500281	33
500390	33
500670	47, 49
501286	49
501289	47
502790	33
502804	33
56186	47, 49
61294	47, 49
Lead-In Pipe Assembly	
500647	45
Leveling Leg	
500101	47, 49
Limit Thermostat	
61886	43
62641	41
Lint Filter	
503980	37
Locator	
56079	15, 17, 19, 21, 23, 33, 47, 49
Lock Assembly	
27260	5, 7, 9, 11, 13
Lock In Spade Terminal	
00115	55
00122	55
Locknut	
29786	9
52566	35
56156	35, 39
Lockwasher	
25820	5, 7
91176	5, 7
Lower Air Duct Assembly	
503626	37

M

Male Pin Terminal	
00116	53
00127	53
Male Tab Terminal	
00138	55
00139	55
Molex Terminal	
00188	57
Motor Assembly	
502368P	35
Motor Connection Block	
500338	57
Motor Hub Ring Kit	
590P3	35
Motor Mounting Bracket	
503613	35

Motor Mounting Clamp 58047	35
Motor Pulley 500011	35
Motor Switch 501218P	35
Mounting Bracket 500821	45

N

Nut 29796	17
52947	7

O

Outer Door Panel 503654*	29
503655*	31
Outlet Cover 500820	41, 43
Overlay 500814	5

P

Pawl Spring 53244	25, 27
Power Cord 59308	51, 53
Push-to-Start Switch Assembly 55882	5, 7

R

Ratchet Extension Tool 310P4	57
Ratchet Wheel 53239	25, 27
Rear Bulkhead 505244	39
Retainer Ring 23748	35, 39
Ring Terminal #10 00110	55
00111	55
Rivet 504540	37
Roller Bracket 500062	39

S

Screw 03203	7
03950	7
20530	5, 7, 11, 13, 51
23222	41, 45
27328	5
31260	35
32671	15, 17, 19, 21, 23, 33, 47, 49
33561	35
33562	49
500226	29, 31, 37
500227	31
501285	37, 39
501524	9, 11, 13
502431	15, 17, 19, 21, 23, 47
503350	29
503661	7, 15, 17, 19, 21, 23, 33, 35, 39, 47, 49
503688	15, 17, 19, 21, 23, 37, 39, 41, 43, 45, 47, 49
505295	29, 31
51782	43, 45
56124	45
61199	39
62588	37
Seal 504018	35
Secondary Coil 58804B	45
Sensor 56231	45
Setscrew 20310	5, 7
Shaft 56461	35, 39
Shield 504185	39
Shoulder Screw 500824	35
Shut-off Valve 56229	45
Single Coin Drop 38479	9
Slide Extension 503455	7
Slotted Hex Head Screw 33562	33
Spade Terminal 00114	55
00119	55
00121	55
00124	55
00156	55
00189	55
00209	55
00245	55
00255	57
00256	57
Spring 56076	35
Strain Relief 38384	51, 55
52113	5, 7, 9, 11, 13
52151	5, 7, 9, 11, 13

Switch	
504570	19
53236	25, 27
61468	27

T

Terminal	
00190	55
00344	55
00345	55
00346	55
00347	55
Terminal Block	
58799	55
58800	53
61923P	39
Terminal Block Plug	
23040	53
56266	53
56448	53
Terminal Block Receptacle	
23039	53
56265	53
56451	53
Terminal Extractor Tool	
128P4	57
190P4	57
283P4	57
Thermal Fuse	
62600	41
Thermistor	
59500	35
Thermostat	
504515	35
Timer	
500399	5
59228	7
61309	27
Timer Assembly	
59228	25
Timer Bracket	
503017	7
Timer Knob Assembly	
54678	5
Timing Cam	
.....	27
53240	25, 27
53241	25, 27
53242	25
53243	25, 27
Timing Cam Drive	
M400754	25, 27
Timing Motor	
53235P	25, 27
Torx Bit	
282P4	33
Torx Bit Holder	
24161	33
Torx Head Screw	
62853	33
12 Gauge Wire	
45380	58, 59

U

Upper Air Duct Assembly	
505529	37

W

Washer	
501307	15, 17, 19, 21, 23, 47
52549	35, 39
Wedge	
505328	29, 31
Window	
503982	31
Window Trim	
503981*	31
Wire Clip	
504034	53
Wire Harness	
60641	45
Wire Harness, Lower	
500828	58
504695	58
504698	59
504727	59
504728	58
504730	58
Wire Harness, Security Cabinet	
38191	59
39492	58
500867	58
500954	58
500961	58
500963	59
501374	59
501378	58
503680	58
59296	58
62672	58
Wire Harness, Upper	
500827	58
504702	59
504703	58
504720	59
504722	59
505099	58
Wire Tie	
55881	53