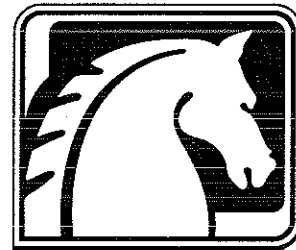


WCK 4-AA AND AB

**THE
DEXTER
COMPANY**



**THOROUGHBRED
600**



**THOROUGHBRED
400**



WASHER - EXTRACTORS
SERVICE PROCEDURES AND PARTS DATA

FAIRFIELD, IOWA 52556 / TELEPHONE 515-472-5131

Laundry Specialists Since 1894

0A am AA-78W

10

10

SPECIFICATIONS

MODEL	WCK4 SERIES THOROUGHbred 400	WCK6 SERIES THOROUGHbred 600
ELECTRICAL 1 PHASE - 3 PHASE -	<hr style="width: 50%; margin: 0 auto;"/> 220-240 VAC, 60 HZ, 1 PH 208-240 VAC, 60 HZ, 3 PH	
CAPACITY	4 CUBIC FT. (UP TO 25#)	6 CUBIC FT. (UP TO 40#)
CYLINDER DIM.	25" DIA. x 14 $\frac{1}{8}$ " DEPTH	25" DIA. x 21 $\frac{1}{8}$ " DEPTH
MOTOR-TWO SPEED REVERSING	0.35/1.5 HP.	0.35/1.5 HP (3 PH)
WASH SPEED	<hr style="width: 50%; margin: 0 auto;"/> 50 R.P.M.	
SPIN SPEED	510 R.P.M.	
EXTRACTION	92 G's	
PROGRAM: TEMPERATURES	4 TEMPERATURE CYCLES — PUSHBUTTON SELECTABLE BY CUSTOMER	
CYCLE TIMES	4 CYCLE TIMES — OWNER ADJUSTABLE BY SINGLE WIRE CONNECTION (SEE CYCLE TIME CHART)	
MACHINE CONTROL: STANDARD OPTIONAL	COIN START WITH COIN COUNTER MANUAL START	
WATER USAGE WITH PREWASH WITHOUT	<hr style="width: 50%; margin: 0 auto;"/> 51.0 GAL. 67.0 GAL. 40.0 GAL. 53.5 GAL. (Water usage will vary with load)	
WATER INLET	2 SOLENOID OPERATED VALVES WITH FLOW WASHERS FLOW RATE, 5 GAL./MIN EACH FLOW PRESSURE, 30-120 PSI	
DRAIN VALVE	3" OUTSIDE DIAMETER	
GROSS WEIGHT NET WEIGHT	495 POUNDS 461 POUNDS	<hr style="width: 50%; margin: 0 auto;"/> 656 POUNDS 622 POUNDS

CYCLE TIMES — THOROUGHbred 400 & 600

CYCLE ' =minutes, " =seconds	HEAVY DUTY	NORMAL	P. PRESS NYLON	WOOL DELICATE
Pre-Wash (if used)	3'40"	3'40"	3'40"	3'40"
Drain	60"	60"	60"	60"
Wash —				
Long	11'25"	11'25"	11'25"	11'25"
Normal	8'20"	8'20"	8'20"	8'20"
Drain	60"	60"	60"	60"
Spin	50"	50"	50"	50"
First Rinse	3'40"	3'40"	3'40"	3'40"
Drain	60"	60"	60"	60"
Spin	50"	50"	50"	50"
Second Rinse	3'40"	3'40"	3'40"	3'40"
Drain	60"	60"	60"	60"
Spin	3'25"	3'25"	3'25"	3'25"
Tumble	25"	25"	25"	25"
Approximate Total Time				
M 1 Pre-wash & Long	32' 0"	32' 0"	32' 0"	32' 0"
O 2 Long Wash	27'30"	27'30"	27'30"	27'30"
D 3 Pre-wash & Norm	29'15"	29'15"	29'15"	29'15"
E 4 Normal Wash	24'20"	24'20"	24'20"	24'20"
WATER TEMPERATURES				
Pre-wash	WARM	WARM	WARM	COLD
Wash	HOT	WARM	WARM	COLD
Rinse	COLD	COLD	COLD	COLD
*Rinse (option)	WARM	WARM	WARM	COLD

*Rinses can be converted to warm by moving the Brown/Orange wire on B-11 to TB-9 (TB-# relates to a terminal number on the large terminal block located in the electrical control trough. The terminals are labeled along side the terminals.) Disconnect electrical power before moving wire.

WATER USAGE

THOROUGHbred 400 (No Load)

Normal wash

Cycle selection	Hot (Gal.)	Cold (Gal.)	Total (Gal.)
Cold	1	32	33
Warm	6.5	25	31.5
Hot	12.5	20	32.5

Normal wash w/Prewash

Cycle selection	Hot (Gal.)	Cold (Gal.)	Total (Gal.)
Cold	1	42.5	43.5
Warm	12	31.5	43.5
Hot	17.5	26.5	44

THOROUGHbred 400 (W/25# LOAD)

Normal wash

Cycle selection	Hot (Gal.)	Cold (Gal.)	Total (Gal.)
Cold	1	40	41
Warm	5	35	40
Hot	12	28	40

Normal wash w/Prewash

Cycle selection	Hot (Gal.)	Cold (Gal.)	Total (Gal.)
Cold	1	50.5	51.5
Warm	10	40	50
Hot	15.5	35.5	51

WATER USAGE

THOROUGHbred 600 (No Load)

Normal wash

Cycle selection	Hot (Gal.)	Cold (Gal.)	Total (Gal.)
Cold	1	41	42
Warm	7.5	34	41.5
Hot	14.5	28	42.5

Normal wash w/Prewash

Cycle selection	Hot (Gal.)	Cold (Gal.)	Total (Gal.)
Cold	1	54	55
Warm	14	40.5	54.5
Hot	21	34.5	55.5

THOROUGHbred 600 (W/40# LOAD)

Normal wash

Cycle selection	Hot (Gal.)	Cold (Gal.)	Total (Gal.)
Cold	1	52.5	53.5
Warm	9	43.5	52.5
Hot	20.5	33	53.5

Normal wash w/Prewash

Cycle selection	Hot (Gal.)	Cold (Gal.)	Total (Gal.)
Cold	1	66.5	67.5
Warm	15	50.5	65.5
Hot	20	46	66

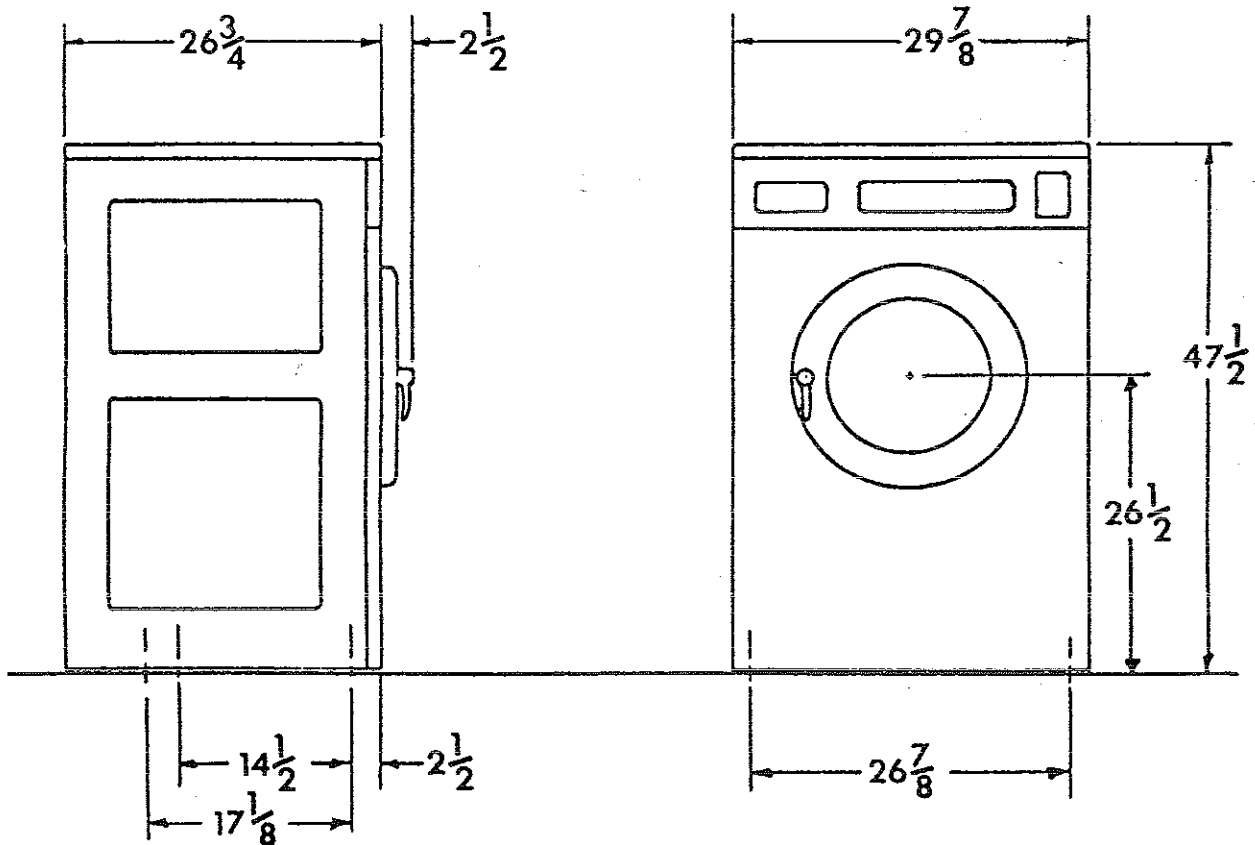
WASHER INSTALLATION DATA

THOROUGHbred

	400		600	
	1 P H A S E	3 P H A S E	1 P H A S E	3 P H A S E
MACHINE DIMENSIONS:				
—Height	47½"		49¾"	
—Depth	26¾"		35⅞"	
—Overall width	30⅝"		30⅝"	
cabinet overall width	29⅞"		29⅞"	
Recommended Mtg. Ht.	6"		6"	
MTG. HOLE DIMENSIONS				
—Left to Right	26⅞"		26⅞"	
—Front of Cabinet to center of front hole	2½"		2¾"	
—Front hole to back hole spacing	14½" also third set of holes at 17⅞"		21½"	
Mtg. bolt dia.	⅝" ½" Min.		⅝"	
Mtg. hole Dia.	¾"		¾"	
Drain valve O.D.	3"		3"	
ELECTRICAL				
Phase	1	3	1	3
Voltage	220- 240	208- 240	220- 240	208- 240
Circuit Breaker	20	15	20	15

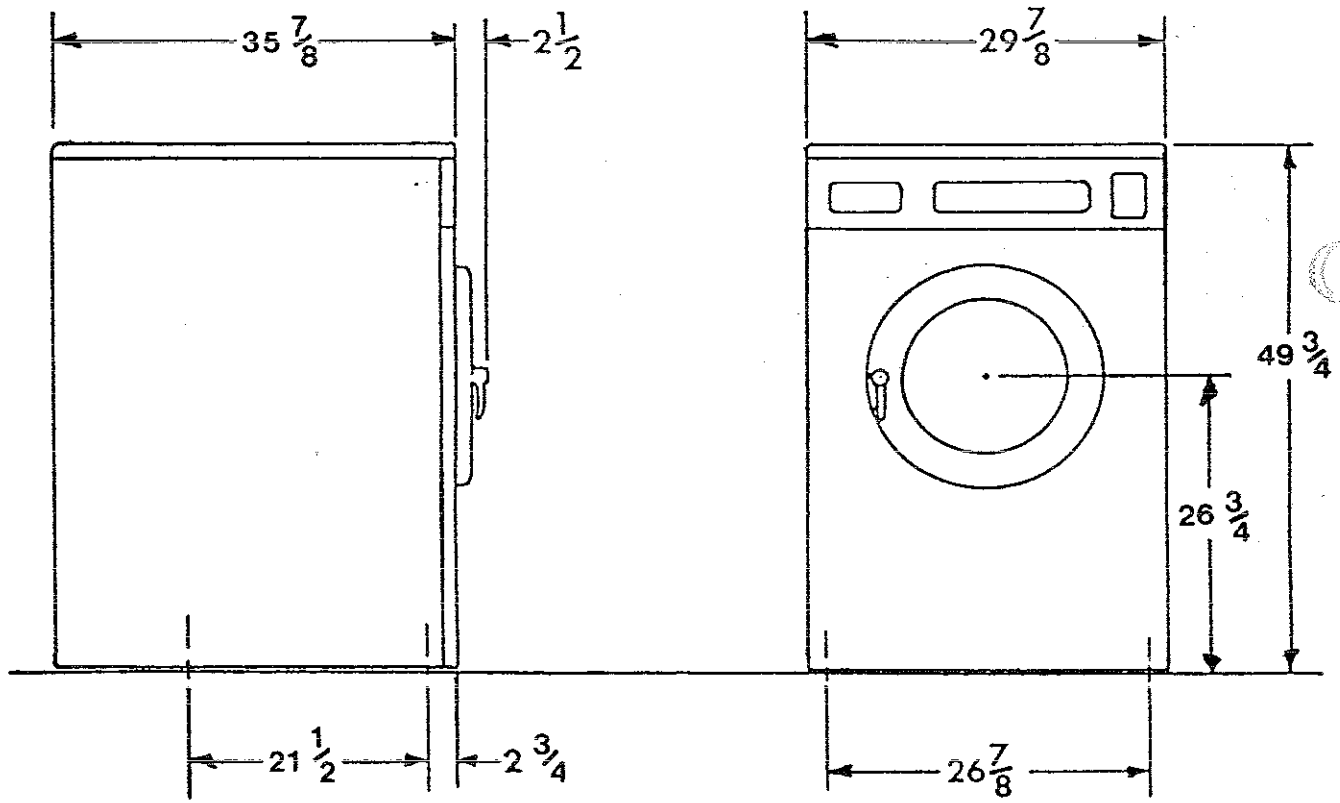
MOUNTING DIMENSIONS FOR THOROUGHbred 400

THERE ARE TWO SETS OF REAR MOUNTING HOLES. THEY ARE LOCATED AT $14\frac{1}{2}$ AND $17\frac{1}{8}$ INCHES FROM THE FRONT SET OF HOLES. EITHER SET OF REAR HOLES MAY BE USED IN CONJUNCTION WITH THE FRONT SET OF HOLES.



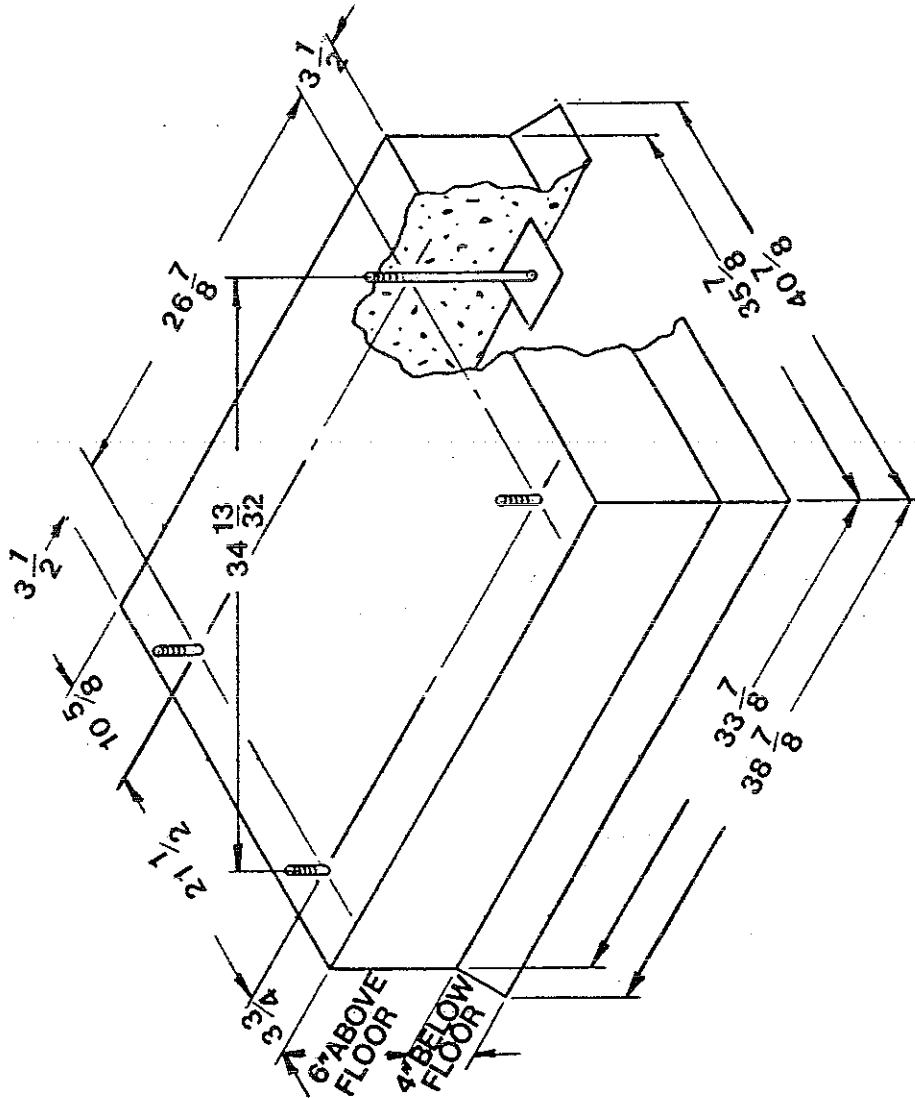
THOROUGHbred 400, THOROUGHbred 400, THOROUGHbred 400,
THOROUGHbred 400, THOROUGHbred 400, THOROUGHbred 400,

MOUNTING DIMENSIONS FOR THOROUGHBRED 600



THOROUGHBRED 600, THOROUGHBRED 600, THOROUGHBRED 600,
THOROUGHBRED 600, THOROUGHBRED 600, THOROUGHBRED 600,

THOROUGHBRID 600, THOROUGHBRID 600, THOROUGHBRID 600,
 THOROUGHBRID 600, THOROUGHBRID 600, THOROUGHBRID 600,

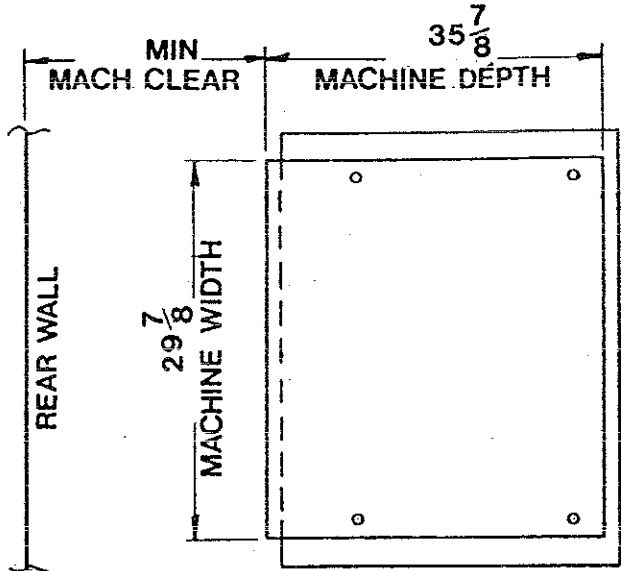
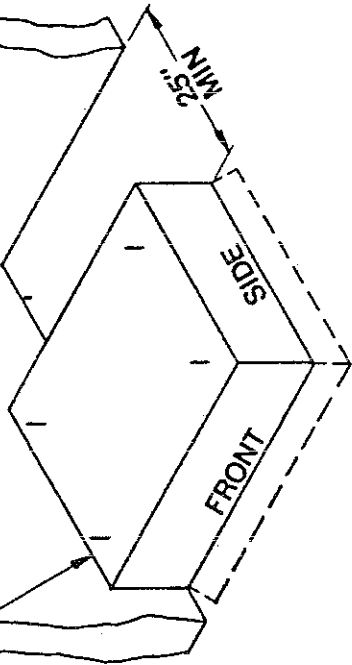


ANCHORS: 1/2" x 8" BOLTS
 HEADED BY 4" SQ. FISH
 PLATE OR EQUIV.
 (1 1/4" BOLT PROTRUSION)

PEDESTAL SHOULD BE
 REINFORCED WITH
 MESH OR RODS.

CONCRETE PEDESTAL ARRANGEMENT

FLUSH WITH WALL
 RESULTS IN 2 IN.
 MACHINE CLEARANCE.



FLOOR OUTLINE

INSTALLATION AND OPERATION OF THOROUGHbred 400 & 600 SERIES WASHER

All washers must be installed in accordance with all local, state and national building, electrical, and plumbing codes in effect in the area.

FOUNDATION REQUIREMENTS

The washer must be securely bolted to a substantial concrete floor, or mounted upon a suitable base which is in turn securely bolted to a substantial concrete floor. Care must be stressed with all foundation work to insure a stable unit, eliminating vibration. All installations must be made on sound concrete floors 6" or thicker.

MOUNTING

A concrete pad or steel base which elevates the machine 4 to 6 inches above the floor level is recommended to provide easy access to the loading door. Allow a minimum of 24" of clearance behind the rear of the machine for service as is shown.

MOUNTING HOLES

The preceding pages illustrate the mounting dimensions for the machine and also show a typical concrete pad arrangement.

THOROUGHbred 400

Mounting hole dimensions are shown as either 14½ or 17½ inches front to back spacing. The 17½ spacing is preferable unless current anchors dictate the 14½ spacing. All 6 mounting holes may be used.

THOROUGHbred 600

There are four mounting holes in the 600 and of course all must be used.

NOTE: Mounting bolts should be checked frequently to insure that they are still tight. The machine should be checked with a spinning load to be sure there is no unusual vibration or movement between the machine and the base or floor.

PLUMBING

Water supply hoses are furnished with each machine. The threaded connections on the hoses are standard garden hose type thread. Separate hot and cold water lines with shut off valves or faucets for inlet hose connections must be provided, maintaining 30 to 60 P.S.I. water flow pressure. A hot water recovery rate of approximately 40 gallons per hour is required for the 25# and 60 gallon per hour for the 40#. A hot water temperature of 160 degrees Fahrenheit is recommended for best washing results.

DRAIN

The drain outlet tube at the rear of the machine is 3" in outside diameter. A flexible hose (Pt. No. 9247-417-003) is available to extend the drain system. Adequate fall must be maintained for proper drainage.

PROTECTIVE FILM

The machine may have protective adhesive film on the front escutcheon area and the front and side stainless steel panels. The film may be peeled off before putting the machine into service.

ELECTRICAL

Dexter WCK4 and WCK6 series washers are intended to be permanently installed appliances. The machine should be connected to an individual branch circuit not shared by lighting or other equipment. The electrical connection should be sheathed in water proof flexible conduit, or equivalent, with conductors of the proper size and insulation (suggested size below). A power cord is not provided. The following diagram shows the proper power connections to the rear terminal block for both 1 and 3 phase machines. Wiring should be performed by a qualified person.

SUGGESTED MINIMUM WIRE SIZE — 12 GA.

FUSING REQUIREMENTS: Dual element time delay fuse or equivalent breaker of amperage specified below.

	THOROUGHbred 400 WCK4 SERIES	THOROUGHbred 600 WCK6 SERIES
1 PHASE	20	20
3 PHASE	15	15

**ALWAYS DISCONNECT ELECTRICAL POWER TO THE MACHINE
BEFORE PERFORMING ANY ADJUSTMENTS OR SERVICE WORK.**

CHECKOUT

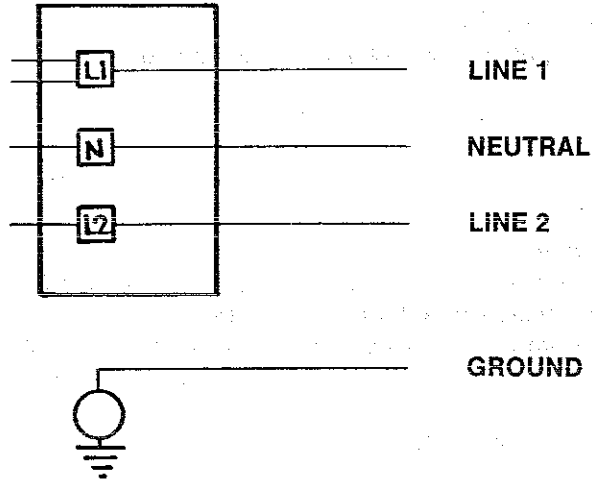
After all mounting, plumbing and electrical work is completed, the washer should be run through a cycle and checked for water leaks and proper functioning.

Note: 3 Phase Machines — Spin must be Counterclockwise viewed from the front of the machine. If spin is clockwise, the power wires going to L1 and L2 on the power terminal block TB-1 should be switched.

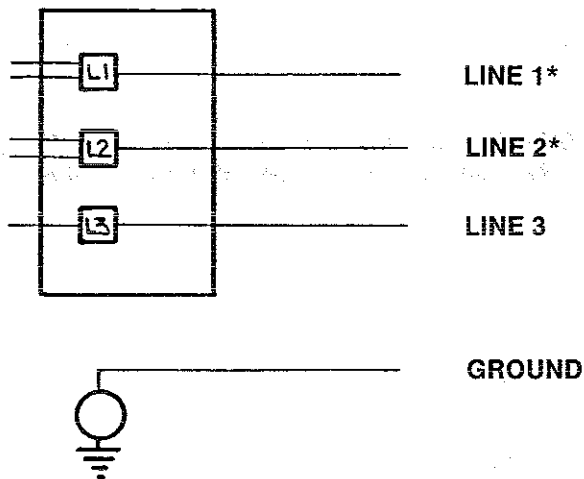
ELECTRICAL POWER CONNECTIONS

CONNECTIONS ARE MADE TO SMALL TERMINAL BLOCK LOCATED IN REAR OF ELECTRICAL CONTROL TROUGH. IT IS REACHED BY OPENING TOP PANEL OF MACHINE.

1 PHASE, 220-240 VAC, 60 HZ



3 PHASE, 208-240 VAC, 60 HZ



MACHINE MUST SPIN COUNTERCLOCKWISE WHEN VIEWED FROM FRONT. IF IT DOES NOT, REVERSE THE TWO STARRED (*) LEADS.

CONNECTIONS FOR INJECTION SYSTEMS

Signals for the connection of chemical injector systems are available at the connection points listed below. These points will give 120 V signals. The locations listed as TB-# are terminal block numbers for the large terminal block at the front of the control trough.

DESCRIPTION	TERMINAL LOCATION
Prewash	TB-12
Bleach	TB-2
Wash	This connection may be made at the wash light at the front of the machine. The wire color to piggyback on is yellow/orange.
Rinse	TB-9
Final Rinse	TB-8

CONNECTIONS FOR WARM RINSES

As shipped from the factory all rinses are cold. Rinses can be converted to warm by moving the brown/orange wire on TB-11 to TB-9 (TB-# relates to a terminal number on the large terminal block located in the electrical control trough). Disconnect electrical power before moving the wire.

OPERATING INSTRUCTIONS

ACCUMULATOR

Prior to operation the machine owner should set the accumulator. The setting procedure sets both the coin count and the digital coin display.

Always disconnect electrical power to the machine before setting the accumulator. Avoid contact with capacitor or other electrical terminals.

1. Open the top of the machine as follows:

- A. Remove the four screws that hold the dispenser to the top panel.
- B. Unlock the top panel.
- C. T400— Swing the hinged top panel up and back.
T600— Remove the top panel from the machine.

2. Setting the Accumulator

The accumulator board contains the digital count down display and is attached to the front of the machine. The accumulator is set by depressing the 6 small switches on the top edge of the accumulator in the correct combination for the desired number of coins. (Switch #1 is the right hand switch viewed from the front of the machine. The switches numbers are also printed on the clear cover over the coin accumulator circuit board.) The switches are actuated by pushing the switch operator toward the back of machine. As the switches are very small, a golf tee or some other nonmetallic tool is desirable for this process. The following chart (also included in owners information) gives the correct switch combinations for different coin insertions.

		NUMBER OF COINS																				
		1	2	3	4	5	6	7	8	9	10	11	12	13	14	15	16	17	18	19	20	
SWITCH NO.	1	X		X		X		X		X		X		X		X		X		X		
	2		X	X			X	X					X	X			X	X				
	3				X	X	X	X							X	X	X	X				
	4								X	X										X	X	
	5																					X
	6											X	X	X	X	X	X	X	X	X	X	

NOTE: For use in Canada, the coin acceptor magnet must be removed.

- A. Disconnect power
- B. Remove the coin acceptor. Remove the small cylindrical magnet which is visible from the side and is held by a set screw.
- C. Reassemble the coin acceptor.

3. Setting the Operating Mode (Program length) —

See Cycle Time Chart for the four Cycle Times that can be selected by moving one jumper wire on the 12 position terminal block. Machines are shipped with the wire connecting terminal 4 to 7 giving a normal wash. Relocating the end of the orange/white wire with the plastic housing from position 7 gives these selections.

- Moving to #4 gives pre-wash and long wash time.
- Moving to #5 gives no pre-wash and long wash time.
- Moving to #6 gives pre-wash and normal wash time.
- Leaving on #7 gives no pre-wash and normal wash time.

Close the top, replace screws in dispenser, lock the top and reconnect power.

STARTING THE WASHER

- A. Load the clothes loosely in the cylinder and latch the door securely. Be sure clothing does not get caught between the door gasket and tub front when closing the door.

NOTE: To close the door the handle must be in the horizontal position. After moving the door to the closed position, the handle must be turned down to the vertical position in order to latch the door for machine operation.

- B. Using the pushbuttons on the front, select the cycle having the desired temperature.
- C. Add low sudsing powdered detergent in the amount shown below into the detergent compartment on top of the machine. Location is illustrated on the front of the machine. Rinse conditioners may be added to their own compartment if desired.

	DETERGENT REQUIREMENT
THOROUGHbred 400	¼ TO 1/3 CUP
THOROUGHbred 600	1/3 TO ½ CUP

- D. Insert the preset number of quarters as shown on the coin display to start the machine. The washer will automatically start and the red "ON" light will glow. The clothes door will lock and remain locked until the end of cycle.
- E. At the correct time in the cycle the green "ADD BLEACH" light will come on indicating the time and location for adding bleach if desired.

END OF CYCLE

When the cycle is completed, the "ON" light will go off and the loading door can be opened by turning the door handle to the indicated position and pulling. Leave the clothes door open when the machine is not in use. Also at the end of cycle the coin count display will reset to the original number of coins required to start.

Section 2

SCHEMATIC DIAGRAM — EXPLANATION AND LOGIC

Both schematic diagrams and connection wiring diagrams are included with this manual. They follow these explanations. In troubleshooting a machine, it is usually best to start with the schematic which shows the logic of operation more simply. Following are explanations of certain selected areas of the machine operation as shown by the schematic diagram.

I. POWER CONNECTIONS AND MOTOR WIRING.

The two large boxes at the very left of schematic diagrams show the power connections and the motor wiring for the 3 phase and 1 phase machines as labeled.

A. Three phase

1. The upper left of the 3 phase box shows the power connections for the 3 incoming power lines (L1, L2, L3), these connections are at the rear terminal block in the control trough.
2. In addition to the motor to relay wiring, the upper right corner of the 3 phase box shows the control transformer used only on 3 phase machines.

B. One phase

1. The lower left hand box shows the 1 phase power connections (L1, L2, Neutral).
2. The motor connection area shows the capacitors and solid state start switch that are used only in 1 phase machines.

II. START CIRCUIT.

- A. At the top of the diagram just to the right of the motor diagrams are components related to machine starting.
 1. The area labeled **START** (to the right and up from the coin accumulator) is the main timer cam that provides power to the accumulator during the off period to allow the machine to count coins.
 2. **S4** — This is the coin switch attached to the coin acceptor and actuated by the coin passing the small wire lever. Each coin going by the switch closes the switch circuit to the coin accumulator and reduces the display by one.
 3. **Coin Accumulator** — Counts the coins inserted into the coin acceptor. After the required number of coins has been inserted, a circuit is closed to provide power to the main timer rapid advance motor (M2) to move the timer into the operating cycle.
 4. The cam labeled **EOC** closes at the end of the cycle to reset the accumulator to the original coin count required to start the machine for the next cycle.

FRONT PANEL ESCUTCHEON

- A. The decorative escutcheon on washer front is adhesive backed. It may be removed by simply peeling it off.
- B. To install a new escutcheon:
 - 1. First remove the coin acceptor.
 - 2. Before removing the paper backing check fit to the machine. The program push buttons and the coin acceptor opening are the locating guides.
 - 3. Remove the paper backing from the right side of the escutcheon, position the escutcheon on the panel and press right end into place, then peel the backing from the left end and press into place.

OPERATION LIGHTS

- A. Program lights — The program lights show the progress of the machine through the cycle. They are all contained in a common body and are replaced as a group. Release side clips from metal mounting brackets and transfer wires one at a time to new light.
- B. Bleach light — The bleach light indicates when the bleach is to be added.
 - To remove the bleach light, squeeze the retainers on the sides of the light body together to release the light from the mounting bracket. The two wires may be placed in either position.

DROP COIN ACCEPTOR

The drop style coin acceptor contains a coin switch actuated by each coin that is accepted. The coin acceptor is released by removing four screws (#T-10 Torx driver, Dexter Pt. No. 8545-051-003).

COIN ACCEPTOR ADJUSTMENTS

REJECTION OF UNDERSIZED COINS

If you are bothered by slugs or tokens that are slightly smaller than quarters it may be possible for you to adjust the acceptor to reject them. Acceptors are built to accept all quarters without nuisance rejection of quarters and, consequently, have some margin of safety built in. The height bar shown in **Figure 1** may be raised slightly to allow coins slightly smaller than quarters to fall to the side.

Steps:

1. First scratch a mark at each end to show the original position.
2. Loosen the screw at each end of the bar.
3. The bar must be raised equal amounts at each end.
4. You must not raise the bar to the point that quarters fall out below the bar.
5. Retighten the screws making sure the bar does not move farther.

DROP COIN ACCEPTOR

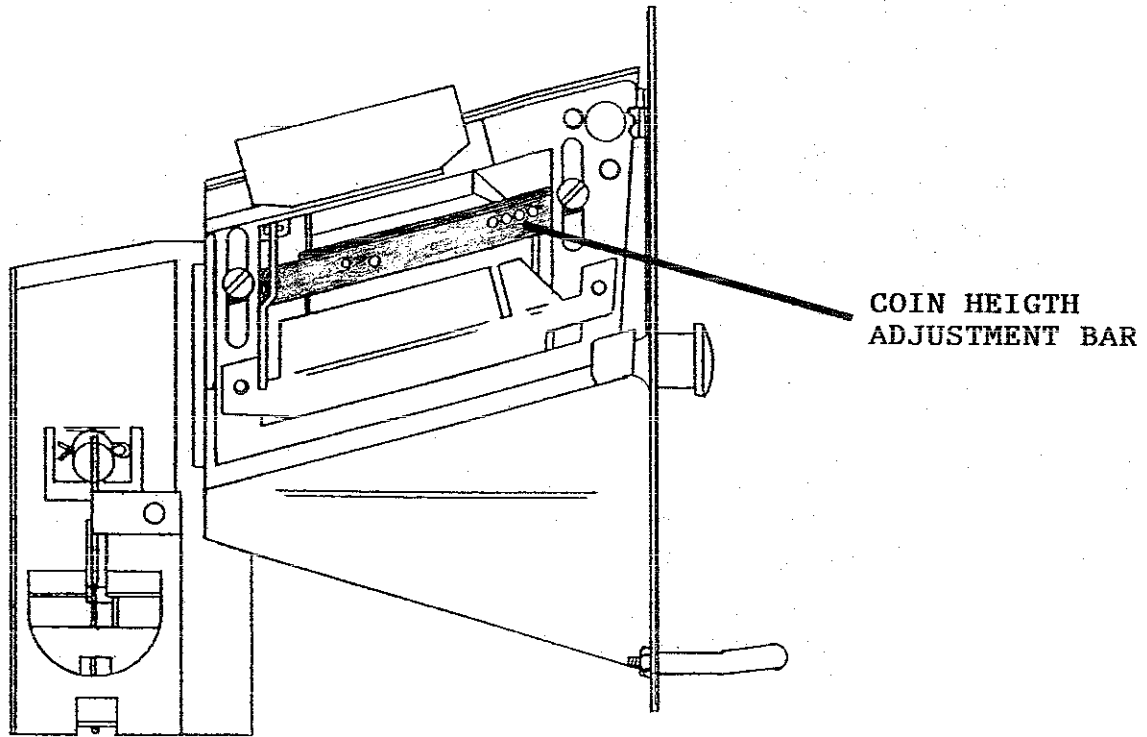


Figure 1.

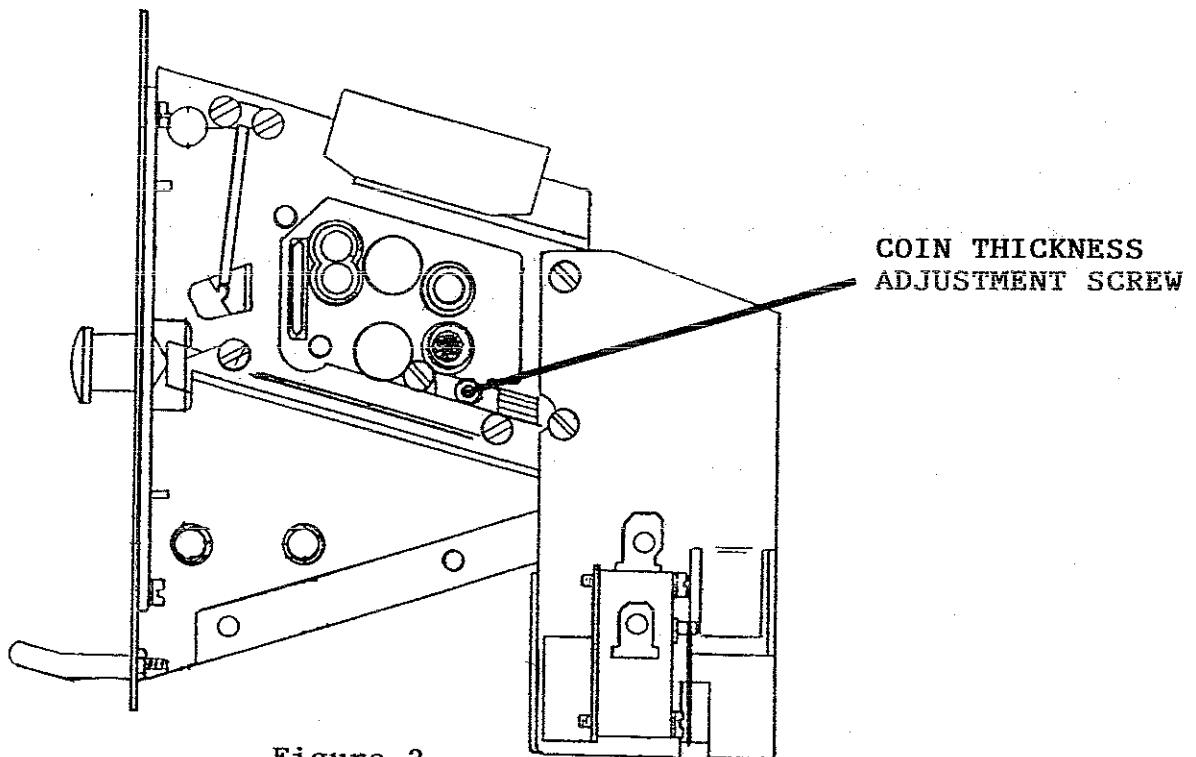


Figure 2.

COIN THICKNESS ADJUSTMENT

If thicker than average quarters hang up in the acceptor, it is possible to change thickness gauging.

Steps:

1. In figure 2, locate the thickness adjustment screw and lock nut.
2. Using a small screw driver, hold the screw from turning while you loosen the lock nut at the base of the screw.
3. Turn the screw in 1/4 turn (to the right) to allow acceptance of thicker quarters and retighten the lock nut while holding the screw.
4. Try the problem quarter and readjust another 1/4 turn if necessary.

COIN ACCUMULATOR WITH COIN COUNT DISPLAY

When the machine is idle, the coin display on the front panel of the washer displays the number of coins required to start the machine. This number is preset for the owners particular vend price requirements.

The coin accumulator receives a signal each time a coin goes past the coin switch on the acceptor. The front panel display counts down as this occurs. After the preset number of coins has been counted, the accumulator closes a circuit to drive the main timer into the cycle and start the machine.

At the end of the cycle, the timer closes the end-of-cycle cam, which resets the count on the display to the original vend price.

The coin accumulator is mounted by 3 nuts. A multiple connector is used to make the electrical connections.

The coin accumulator works on low voltage current. The small transformer that is located inside the control trough provides 12 volts for the accumulator.

NOTE: Remove power to the machine before changing the setting of the coin accumulator.

PROGRAM TIMER

The program timer that controls most machine functions is a cam type of timer and uses two drive motors. One motor drives the timer at the normal timing speed and the other rapid advances the timer at the start of the cycle.

To remove the timer:

- A. Open top panel.
- B. Loosen set screw in knob and remove knob.
- C. Remove two screws mounting timer.
- D. Two multiple wire connectors may then be removed from the timer.

RELAYS

The following three relays are used in this machine: (Check control layout diagram for location).

R1A — This relay switches tumble speed drive motor current in the clockwise direction.

R1B — This relay switches tumble speed drive motor current in the counterclockwise direction.

R2 — This relay switches the drive motor current to the spin speed motor windings. It also insures that the low speed relays cannot operate during spin.

PRESSURE SWITCH AND WATER LEVEL

The pressure switch senses water level by sensing air pressure through the pressure switch hose. The switch contacts open to stop water input at the full level and closes to allow spin and water fills at the empty level.

Normal water level — The normal water level of the machine is approximately ½" up from the bottom of the door glass. This is checked with the machine stationary and unloaded.

A. Removal — The pressure switch is mounted by 2 screws and has the rubber pressure hose pushed on the bottom tube. The wires must be on terminals 1 and 2, in either order.

B. Water level adjustments

1. Before making any adjustments of the pressure switch, drain the tub and blow the hose clear of possible water bubbles which can cause erratic pressure switch operation, then follow the installation hints as outlined above.
2. On all adjustments, it will be necessary to completely drain the unit, then refill for water level check.
3. Note the hex-head screw in the center of the switch body.
4. Clockwise rotation of the screw will raise the water level and counterclockwise rotation will lower the water level. Both the break and the reset adjustments are made with this screw adjustment.
5. Approximately ¼ of a turn on this screw will vary the water level ¼".

WATER VALVES

The machine contains two double outlet water valves, one for hot and one for cold. The cold valve controls water going to the tub and to the rinse dispenser. The hot valve controls water going to the tub and to the wash dispenser.

VACUUM BREAKER

The vacuum breaker prevents any possibility of back siphoning of contaminated water and chemicals into the potable water supply. Many areas require this as a part of their sanitation codes.

CORRECTED SHEET- PLEASE INSERT IN
MANUAL PT. NO. 8533-028-001.

TUB BACK AND CYLINDER ASS'Y REMOVAL

- A. First remove the cabinet and control assembly as outlined previously.
- B. Remove the drive belt.
- C. Remove overflow hose from 4:00 position on tub back.
- D. Remove bolts mounting chassis to concrete or base.
- E. Place the chassis where it can be tipped forward. Place blocks under the top of the tub front to prevent damage by contact with the front trim ring or the door lock assembly.
- F. Remove the 12 bolts from the perimeter of the tub back clamp ring. Also, remove the 2 bolts that fasten the clamp ring to the two legs of the rear of the chassis.
- G. The entire tub back and cylinder assembly may be lifted up out of the tub (it may be necessary to break the adhesion of the silicone that seals the tub back to the tub). Blocks should be placed under the edges of the cylinder before setting it down to prevent damage to the cylinder flange.

BOLT TORQUE CHART

BOLT SIZE	MODEL	BOLT LOCATION	NUMBER BOLTS	TORQUE FT-LBS
1/2" Grade 5	T400	Tub end of bearing housing	6	50-75
	T400	Mounting of tub to cradle ass'y	4	50-75
3/8" Grade 8	T400	Tub back rings to tub back	12	35-50
	T400	Pulley end of bearing housing	6	35-50
5/8" Grade 5	T600	Tub end of bearing housing	6	120- 150
	T600	Mounting of tub to cradle ass'y	4	120- 150
7/16" Grade 8	T600	Tub back rings to tub back	12	50-75
	T600	Pulley end of bearing housing	6	100- 125

THE UNIVERSITY OF CHICAGO
DIVISION OF THE PHYSICAL SCIENCES
DEPARTMENT OF CHEMISTRY

REPORT OF THE
COMMISSION ON THE
STRUCTURE OF THE
ATOMIC NUCLEUS
AND THE
PROPERTIES OF
THE ELEMENTS
OF THE PERIODIC
TABLE

BY
RICHARD FEYNMAN
AND
MORSE T. PEIERLS

CHICAGO, ILLINOIS
1951

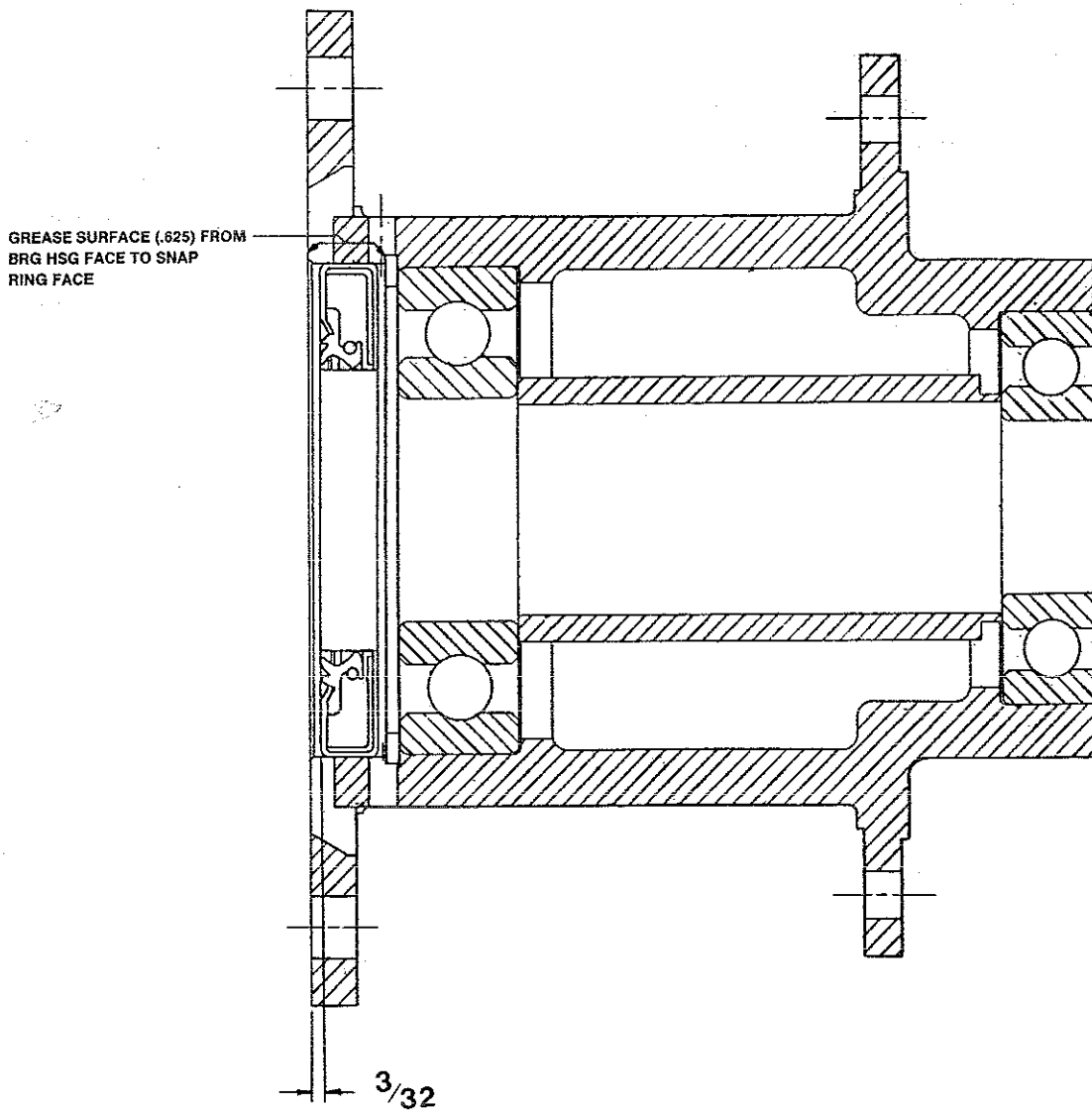
SPIDER, BEARING HOUSING AND PULLEY GROUP

W
C
K
6
A
A
W
C
K
6
A
B

CORRECTED SHEET- PLEASE INSERT IN
MANUAL PT. NO. 8533-028-001.

Key	Part Number	Description		
1	9848-113-001	Cylinder, Assy.....	1	1
2	9803-186-001	Housing, Bearing- Assembly (includes items #2-#7.....	1	1
*	9241-180-002	Housing, Bearing.....	1	1
3	9036-159-005	Bearing, Front.....	1	1
4	9036-159-004	Bearing, Rear.....	1	1
5	9538-167-001	Spacer, Bearing.....	1	1
6	9487-238-003	Ring-Retainer, Internal.....	1	1
9	9532-140-006	Seal, Secondary.....	1	1
10	9532-140-002	Seal, Primary.....	1	1
11	9950-048-001	Ring, Seal Mtg.....	1	1
13	9962-008-002	Back Assy, Tub.....	1	1
14	9545-060-001	Screw, 5/8 x 1 1/2 Gr 5.....	1	1
14	8640-425-001	Nut.....	6	6
14	8641-582-018	Lockwasher.....	6	6
15	9991-051-002	Support Assy., Bearing Housing.....	6	6
16	9545-059-003	Screw, 7/16 x 1 1/2 Gr 8.....	6	6
16	8640-416-005	Nut.....	6	6
17	9453-168-003	Pulley, Driven.....	6	1
18	9487-234-003	Ring, Tolerance.....	1	1
19	8641-581-032	Washer.....	1	1
19	9545-060-001	Screw.....	1	1
19	8641-582-018	Lockwasher.....	1	1

SHAFT SEAL LOCATION (T400 ONLY)



REASSEMBLY OF TUB BACK AND CYLINDER ASSEMBLY TO TUB

- A. Reassembly of the tub back and cylinder assembly is basically the reverse of the above procedure. The following two operations must be performed.
 - 1. The tub back to cylinder contact area has no gasket and is sealed with silicone sealer. Before reassembly, remove all of the old sealer and place a new bead of sealer in that area. Have the tub back in the correct orientation before it contacts the sealer in order not to scrub the sealer away from any given area.
 - 2. The bolts around the perimeter of the tub back should be reinstalled as they were originally and torqued according to torque chart.

BEARING HOUSING REMOVAL FROM CYLINDER SHAFT

- A. Remove the bolt and washer from the cylinder shaft end.
- B. It is necessary to use a puller to remove the pulley from the shaft. Thread a bolt into the end of the shaft to prevent damage of the shaft end and threads. After the pulley is removed, the tolerance ring that fits between the pulley and shaft may be slid off. It should always be replaced before reassembly.
- C. It is also necessary to use a puller to remove the bearing housing assembly from the shaft. There is a flange on the bearing housing that may be used with a three jaw puller.

IMPORTANT - Be careful not to move the flat metal plate that mounts the two rubber sealing rings on the cylinder shaft. The location of this seal mounting plate is critical and it must not be moved. The two sealing rings can be replaced without disturbing it. The included illustration shows the proper location of this plate for T400 washer. T600 washers have the plate located against a stop on the shaft.

BEARING HOUSING AND TUB BACK DISASSEMBLY

- A. To remove the tub back assembly, the 6 bolts attaching it to the bearing housing must be removed.
- B. The retaining ring next to the bearing must also be removed.
- C. The bearings are pressed into the housing and must be pressed back out.

REPAIR AND REASSEMBLY OF BEARINGS AND SEALS

- A. The following instructions are an outline for those who devise their own tooling for this repair. Dexter has tools designed for this job under part number 8545-054-001. These tools have instructions for applying them to the different steps of the bearing and seal repair. For those not wanting to install bearings into the housing, the bearing housing with the bearings installed is available as an assembly.
- B. If installing new bearings into a bearing housing, first press the front (large) bearing into the housing until it bottoms. With the bearing spacer in place, press the rear bearing in until the spacer is snug between the two bearings. Be sure and reinstall the retaining ring in front of the front bearing.
- C. The tub back assembly should be reattached to the bearing housing with the 6 mounting bolts and torqued according to the torque chart. If the 6 support assemblies have been removed from the bearing housing, the 6 rear bearing housing bolts should be torqued according to the chart also.
- D. The primary and secondary seals that mount on the sealing ring that stays with the cylinder shaft may be slid over the shaft and seated on the metal mounting ring (note the location of the existing seals before removal). It is important to seat these seals over the full circumference of the seals.

In the unlikely event that the metal ring that mounts these sealing rings were to be damaged or moved, a new one would need to be pressed on. The T400 would need to be pressed on to the dimension shown in the accompanying illustration. The T600 ring must be pushed against the stop on the shaft.
- E. The tub back assembly should be lightly lubricated with a silicone grease in the area where the primary and secondary seal contact it.
- F. To reassemble the bearings and tub back assembly, carefully set the assembly over the shaft engaging the bearings and bearing spacer. The bearing housing must be pushed onto the shaft by pushing the I.D. of the rear bearing until the front bearing is against the shaft shoulder. The tolerance ring that fits the pulley area should be placed in position and the pulley started onto the shaft. The pulley is then pushed onto the shaft until it contacts the I.D. of the rear bearing. The shaft end bolt with washer should be installed with a torque of 45 foot-lbs.

OUTER TUB SERVICE

- A. The outer tub can easily be removed when the cabinet is off of the machine and the cylinder and bearing housing assembly have been removed as outlined above.
- B. At that point the only attachments to the chassis are the two front strap mounting bolts.
- C. If the front strap is removed, when reassembling attach the two front chassis mounting bolts loosely. Then tighten the top strap bolt before tightening the two band to chassis bolts.

Trouble Shooting Guide

COMPLANT	PROBABLE CAUSE	REMEDY
Machine does not start	Power supply	Check these areas: — Circuit breakers — Voltage — Power leads — Power connections
	Door switch	Check for continuity through door switch when closed.
	Coin acceptor	Check coin switch to make sure coins trip switch and give continuity across switch when closed.
	Accumulator transformer	Check accumulator transformer for 12 V. required by accumulator
	Coin accumulator	Check accumulator to see that display is showing correct number of coins to start
		Check accumulator for short output signal at orange-white wire when preset number of coins is reached. Replace accumulator if necessary
	Breaker (1.5 amp)	Check the manual reset breaker located in the back channel of the machine
Timer, Rapid advance motor	Check the rapid advance motor for continuity and replace if bad.	

(trouble shooting guide)

COMPLANT	PROBABLE CAUSE	REMEDY
Machine will not accept and count coins.	Coin acceptor	Check coin acceptor for any type of blockage or damage.
	Power Supply	See power supply checks above
	Timer	Timer must be in off position, machine had to finish previous cycle.
	Coin accumulator	Check accumulator to see that display is showing correct number of coins to start.
	Breaker (1.5 amp)	Check the manual reset breaker located in the back channel of the machine.
Door does not lock	Timer position	The following sequence must have taken place to advance the timer before the door locks: — Loading door closed — Proper number of coins inserted to start machine — Accumulator counted and credited coins to advance timer into cycle closing "on/off" cam
	Door locking solenoid does not close	if power is available to solenoid but doesn't close, check continuity; replace if bad.
Door will not open	Timer	Make sure machine is in "off" position allowing timer to authorize door unlock.
	Door lock solenoid	Check that door lock solenoid is not stuck closed.

(trouble shooting guide)

COMPLANT	PROBABLE CAUSE	REMEDY
Machine starts but will not advance through cycle	Main timer drive motor	If power is available to main timer drive motor, but it doesn't run, replace timer motor.
Hot water does not enter tub	Selector switch	Choose "Heavy Duty" cycle and check for continuity across selector switch between red/blue & red/yellow wire terminals.
	Pressure switch	Check pressure switch continuity between terminals #1 and #2
	Water valve coil	Check coil continuity at terminals and replace if necessary.
No cold water to tub in wash	Selector switch	Choose "Perm-Press" cycle and check for continuity between white/black and white/orange terminals
	Pressure switch	Check pressure switch continuity between terminals #1 and #2.
	Water valve coil	Check coil continuity at terminals and replace if necessary.
No hot water in detergent dispenser	WASH DISP cam	Check for voltage at WASH DISP cam to close hot coil.
	Pressure switch	Check pressure switch continuity between terminals #1 and #2
	Water valve coil	Check coil continuity at terminals and replace if necessary
No water to softener compartment	Clogged inlet screens	Check inlet screen and clean or replace as necessary
	Pressure switch	Check pressure switch continuity between terminals #1 and #2
	Water valve coil	Check coil continuity at terminals and replace if necessary

(trouble shooting guide)

COMPLANT	PROBABLE CAUSE	REMEDY
Water comes in but level does not rise	Dump valve	Check these areas: — Dump valve blockage — Dump valve motor and gear train — Power to the dump valve; if no power to dump, check (brn-yel) circuit for power
Water level too high	Pressure switch	Check for blockage in pressure switch hose. Check for pressure switch opening circuit across terminals #1 and #2. Replace switch if contacts do not open
Water drains slowly	Drain system	Check hoses and dump valve for blockage. Check building drains for blockage or inadequate size.
Machine does not tumble	R2 relay	Check continuity between terminals #13 and #14 on R2 relay.
	Wash speed capacitor	Check capacitor and replace.
Machine tumbles only in one direction	Reversing timer	Check reversing timer for motion; if none, check for power to timer motor and check continuity of timer motor.
	Tumble relays	Check R1A and R1B tumble speed relays. If one does not close during tumble speed, check coil continuity and power to the relay.

(trouble shooting guide)

COMPLANT	PROBABLE CAUSE	REMEDY
Machine does not spin	Spin relay	Check spin relay coil for continuity; replace if shorted. Check relay contacts.
	Pressure switch	Check pressure switch for contact across terminals #1 and #2, indicating pressure switch has reset.
	Spin start capacitor	Check and replace.
	Solid state start switch	Replace if it is not switching spin start capacitor into circuit for starting into spin speed
Machine does not stop at end of cycle	Coin accumulator giving continuous start signal	Check for continuous output from terminal where orange-white wire connects to accumulator. If so, replace accumulator.
Excessive vibration	Mounting system	Check these areas: — Strength of mounting structure, concrete or base. — Mounting bolts may be loose and need tightening.
	Drive belt	— Worn drive belt can cause vibration and noise.
	LOADING	— NOTE: SMALL LOADS CONTRIBUTE TO OUT OF BALANCE LOADING AND INCREASE VIBRATION.

Section 4

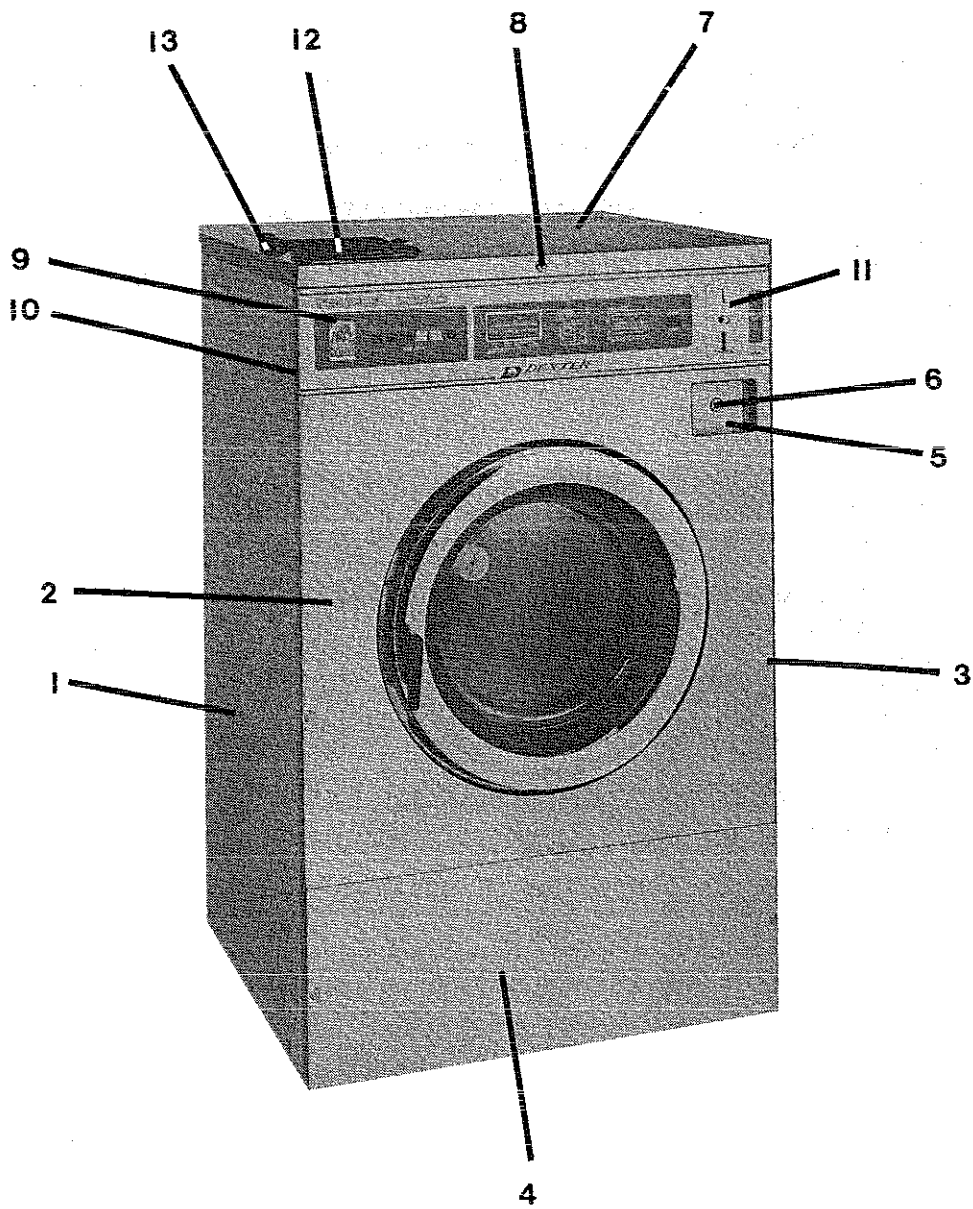
PARTS DATA THOROUGHbred 400

NOTE:

SERIES	WCK4AA — 220-240 VOLTS, 60 HZ, 1 PHASE
	WCK4AB — 208-240 VOLTS, 60 HZ, 3 PHASE

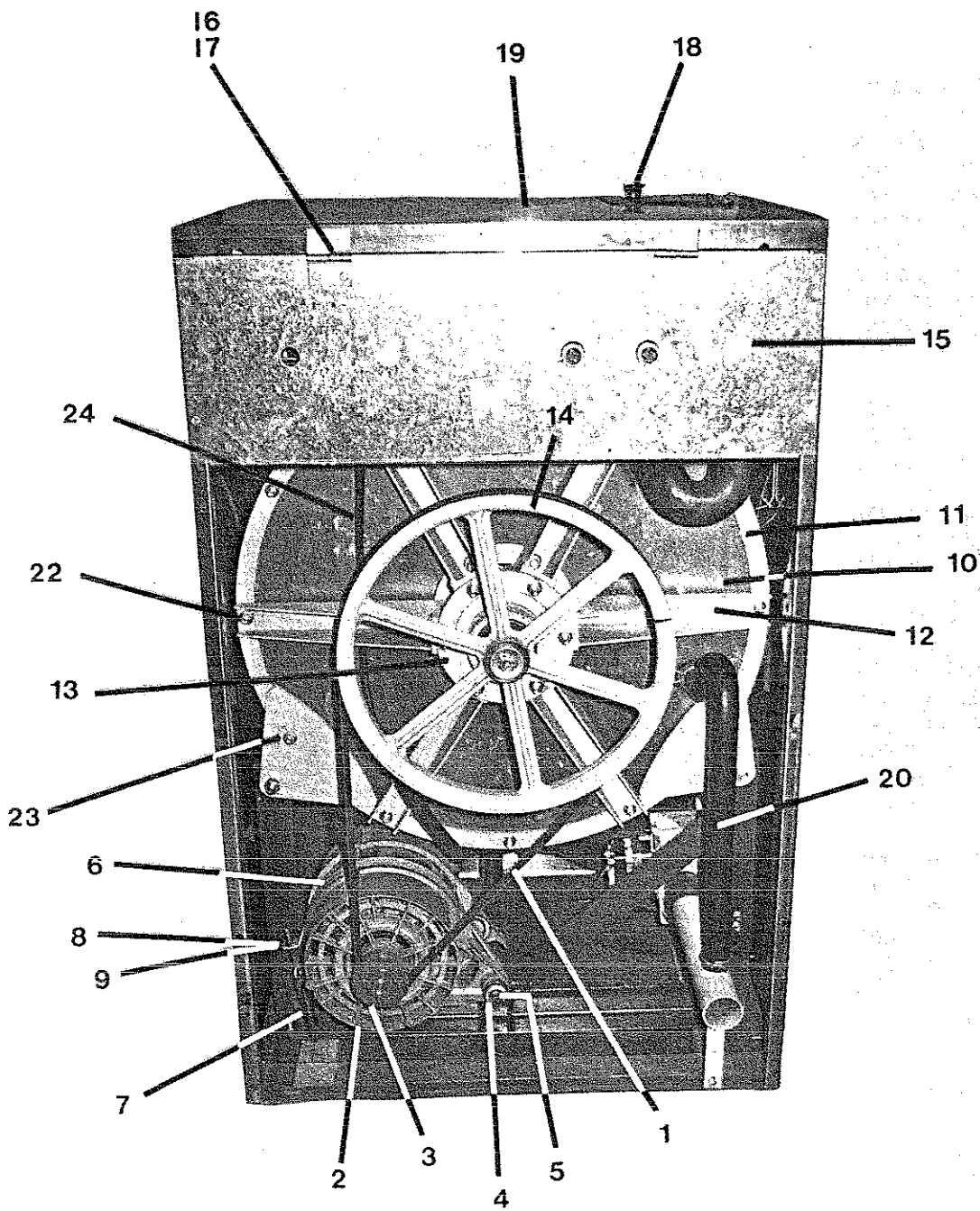
ACCESSORIES

Part Number	Description	
9990-027-011	Hose, Water Supply (furnished)	
8641-242-000	Washer, Inlet Hose (furnished)	2
9565-003-001	Strainer, Inlet Hose (furnished)	2
9732-069-001	Hour Meter Kit	
9249-001-001	Hourmeter	
9732-106-003	Manual Operation Kit	
9539-474-001	Switch, Blk/Red	
9539-474-002	Switch, Blk/Wht	
8545-051-003	Special Tool For Removing Coin Acceptor Mounting Screws. (Torx Size T-10)	



CABINET AND FRONT PANEL GROUP

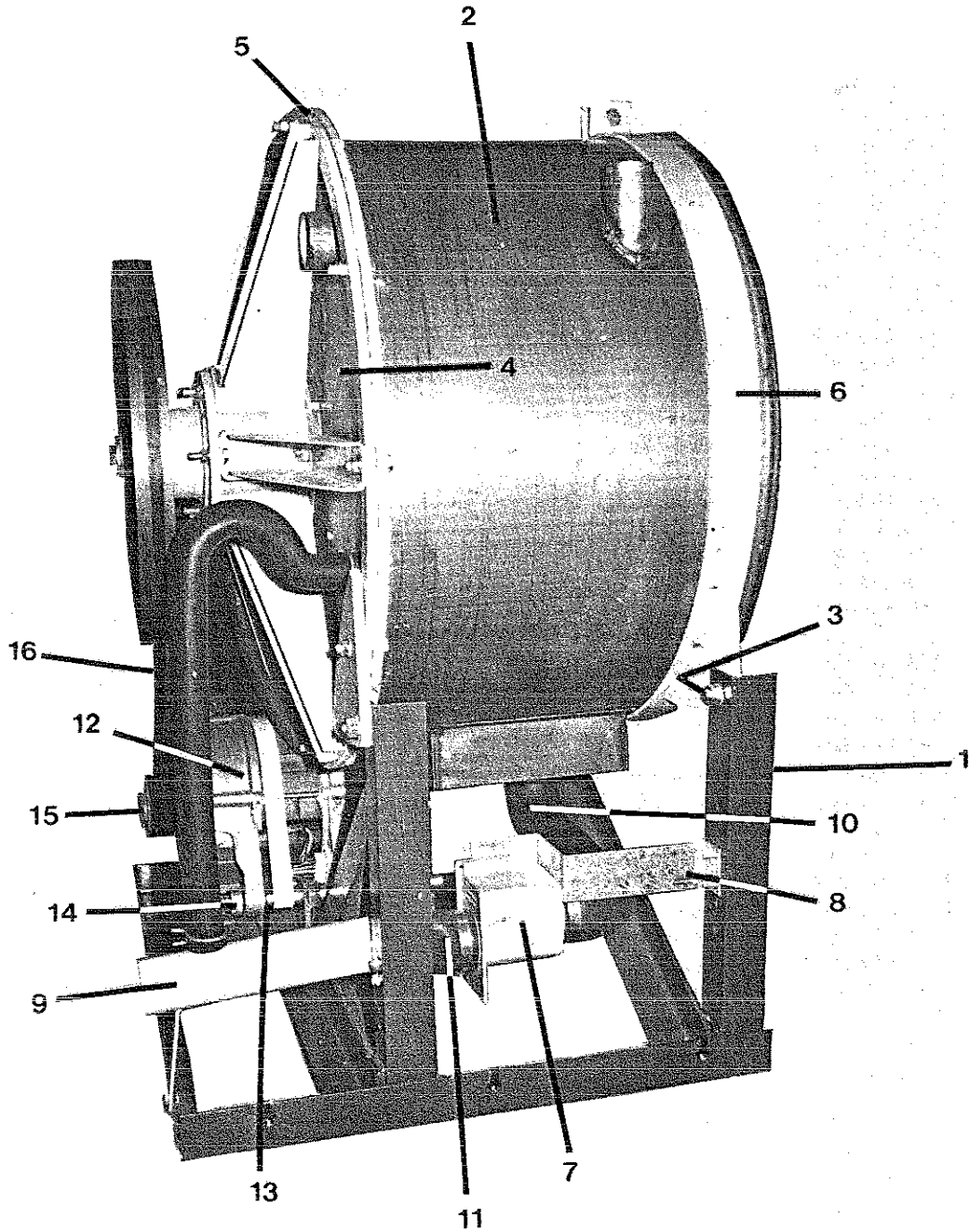
Key	Part Number	Description	MODELS	
			W C K 4 A A	W C K 4 A B
1	9454-629-006	Panel, Side (Left or Right) — Gray		
1	9454-629-007	Panel, Side (Left or Right) — Stainless	2	2
*	9545-018-013	Screw, (Side Panel to Base)	2	2
*	8640-414-004	Nut, Hex	6	6
*	8641-582-007	Lockwasher	6	6
2	9989-438-001	Panel Assy, Front	6	6
*	9059-063-002	Band, Edge Protector	1	1
*	8640-399-005	Nut, Spring	1	1
*	9545-008-005	Screw, Hex	3	3
3	9545-008-014	Screw, Flat Head	5	5
3	8641-585-001	Washer, Finish	4	4
*	8502-624-001	Label, Door Opening	4	4
4	9108-092-003	Door, Lower Service	1	1
*	9545-008-015	Screw, Locator	1	1
			4	4
5	9807-077-007	Box Assy, Coin (See Coin Box Group)	1	1
6	8650-012-002	Lock, Coin Box (See Coin Box Group)	1	1
*	9942-024-006	Vault Assy, Coin	1	1
*	9545-008-005	Screw, Vault Mounting	1	1
7	9454-627-003	Panel, Top	4	4
8	8650-012-003	Lock, Top (w/Key) # 6324	1	1
*	9306-025-001	Key, Top-6324	1	1
*	9095-038-001	Cam, Lock-Top		
*	8220-001-280	Wire Assy, Ground	1	1
*	9067-001-004	Cable, Top Panel Stop	1	1
*	9076-056-002	Collar, Cable Stop	1	1
*	9545-010-006	Screw, Cable Stop	2	2
*	9086-017-001	Catch, Top Panel Locator	2	2
*	9467-024-001	Post, Top Panel Locator	2	2
*	8640-411-003	Nut	2	2
9	9412-076-003	Nameplate, Control Panel	2	2
10	9989-447-002	Panel, Control (Mounts Nameplate)	1	1
*	9545-008-006	Screw, Control Panel Mtg	1	1
11	9021-003-001	Acceptor, Coin (25¢)	4	4
*	9545-020-002	Screw, Acceptor Mounting	4	1
*	8640-424-002	Nut, Acceptor Mounting	4	4
			4	4
12	9108-095-001	Door, Dispenser		
13	9467-025-001	Post, Door Mounting	1	1
*	9451-191-001	Pin, Plain	2	2
*	9545-045-002	Screw, Dispenser Post Mtg.	2	2
*	9545-008-012	Screws, Dispenser Mounting	4	4
*	8640-399-007	Nuts, Spring	4	4
			4	4
*	NOT ILLUSTRATED	Used throughout parts data section of book.		



DRIVE & SUPPORT GROUP

DRIVE AND SUPPORT GROUP

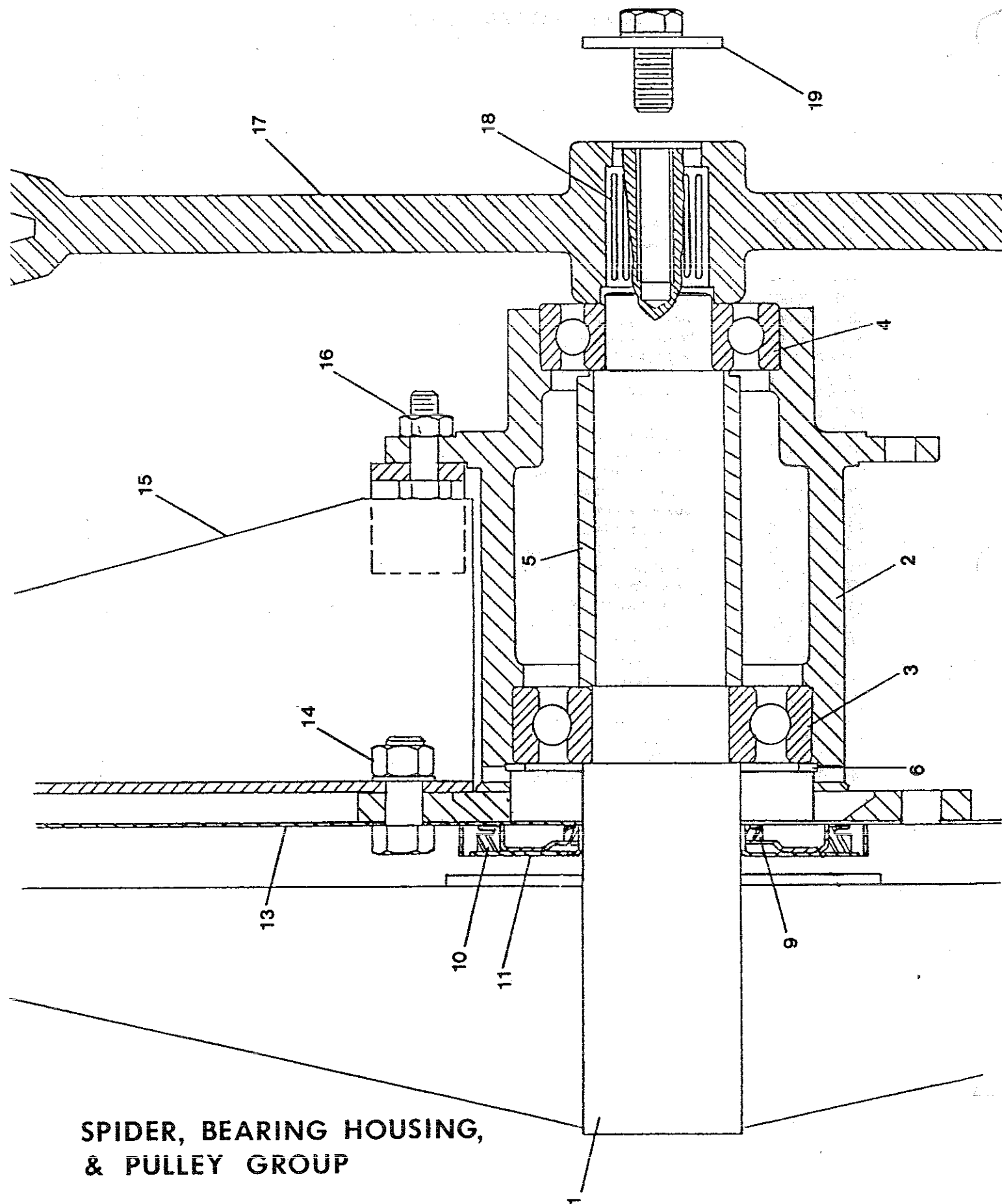
Key	Part Number	Description	MODELS	
			W C 4 A A	W C K 4 A B
1	9040-076-005	Drive Belt	1	1
2	9376-293-009	Drive Motor, 1 Phase (Century)	1	
2	9376-293-008	Drive Motor, 3 Phase (Century)		1
3	9453-169-003	Pulley, Motor-Century	1	1
*	9545-028-013	Set Screw	2	2
4	9497-222-002	Rod, Motor Mtg	1	1
5	9076-052-002	Collar, Shaft (w/set screws)	3	3
6	9544-050-001	Strap, Motor Tension	1	1
7	9534-319-002	Spring, Belt Tension	1	1
8	9545-055-001	Bolt, Eye	1	1
9	8640-414-003	Nut	1	1
10	9962-008-003	Back Assy., Tub	1	1
11	9950-041-002	Ring Assy., Tub Mtg. — Rear	1	1
12	9991-048-002	Support Assy., Bearing Hsg.	6	6
13	9241-169-002	Housing, Bearing	1	1
14	9453-168-002	Pulley, Driven	1	1
15	9081-107-001	Channel, Rear	1	1
*	9545-008-005	Screw	4	4
*	8640-399-004	Nut, Spring	14	14
16	9243-067-001	Hinge, Left Hand	1	1
17	9243-067-002	Hinge, Right Hand	1	1
*	9545-018-003	Screw	8	8
*	8641-582-007	Lockwasher	8	8
*	8640-414-001	Nut	8	8
18	9108-095-001	Door, Dispenser	1	1
*	9467-025-001	Post, Door Mounting	2	2
*	9451-191-001	Pin, Plain	2	2
*	9545-012-017	Screw, Dispenser Post Mtg.	4	4
*	9545-008-012	Screws, Dispenser Mounting	4	4
*	8640-399-007	Nuts, Spring	4	4
19	9454-627-003	Panel, Top	1	1
20	9242-449-002	Hose, Overflow	1	1
*	8654-029-000	Clamp, Hose	2	2
22	9545-029-003	Screw (1½")	16	16
22	8640-415-004	Nut	16	16
*	9552-038-001	Shim, Support Assy		
23	9545-029-006	Screw (1¾")	2	2
23	8640-415-004	Nut	2	2
*	9989-439-002	Panel Assy., Back	1	1
*	9545-008-005	Screw	10	10
24	9242-175-000	Hose, Pressure Switch	1	1
*	8654-059-000	Clamp, Pressure Sw. Hose	1	1



CHASSIS & DRAIN GROUP

CHASSIS AND DRAIN GROUP

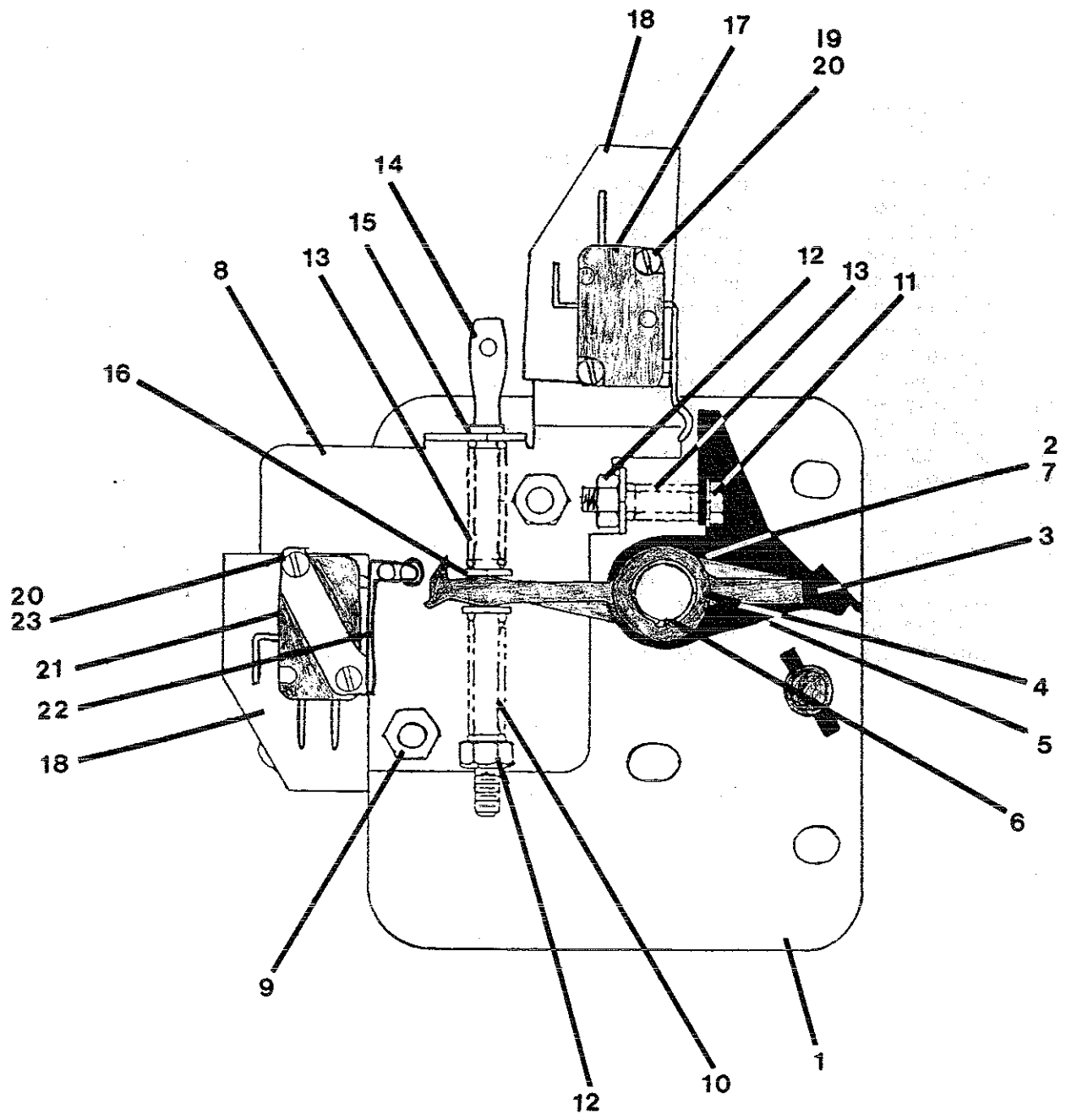
Key	Part Number	Description	MODELS	
			W C K 4 A A	W C K 4 A B
1	9945-087-002	Base Assy, Frame	1	1
2	9930-134-002	Tub Assy	1	1
3	9545-017-009	Screw	4	4
3	8641-582-016	Lockwasher	4	4
3	8640-417-002	Nut	4	4
4	9962-008-003	Back Assy, Tub	1	1
5	9950-041-002	Ring Assy, Tub Mtg-Rear	1	1
6	9950-040-002	Ring Assy, Tub Mtg-Front	1	1
*	9545-017-003	Bolt, Top Front Band	1	1
*	8641-582-016	Lockwasher	1	1
*	8640-417-002	Nut, Hex	1	1
7	9379-187-001	Valve, Drain	1	1
8	9029-056-001	Bracket, Drain Valve	1	1
*	9545-048-001	Screw, Valve to Bracket	1	1
*	9545-030-002	Screw, Bracket Mtg	2	2
9	9915-119-002	Tube Assy, Drain	1	1
*	9545-030-002	Screw, Tube Mtg	2	2
10	9242-456-001	Hose, Tub to Drain Valve	1	1
11	9242-457-001	Hose, Drain Valve to Tube	1	1
*	8654-117-014	Clamp, Hose	4	4
12	9376-293-009	Motor, Drive (1 PH)	1	
12	9376-293-008	Motor, Drive (3 PH)		1
13	9497-222-002	Rod, Motor Mtg	1	1
14	9076-052-002	Collar, Shaft	2	2
*	9545-029-005	Screw, Motor Mtg Rod	1	1
*	8641-582-014	Lockwasher	1	1
15	9453-169-003	Pulley, Motor	1	1
*	9545-028-013	Set Screw, long	2	2
16	9040-076-005	Belt, Drive	1	1
*	9552-038-003	Shim, Support Assembly	AR	AR



**SPIDER, BEARING HOUSING,
& PULLEY GROUP**

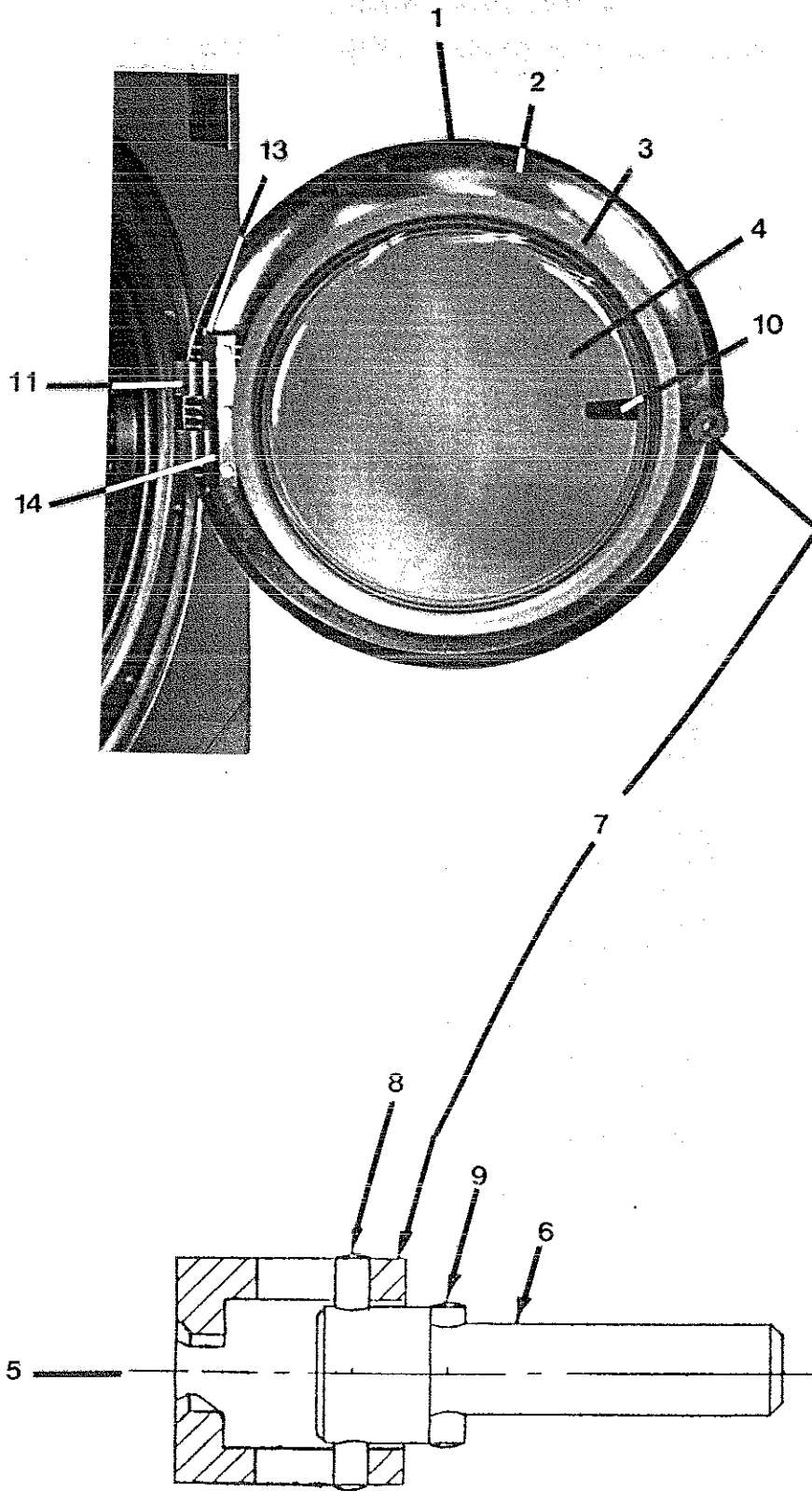
SPIDER, BEARING HOUSING AND PULLEY GROUP

Key	Part Number	Description	MODELS	
			W C K 4 A A	W C K 4 A B
1	9848-109-001	Cylinder, Assy	1	1
2	9803-179-002	Housing, Bearing-Assembly (includes items #2-#7	1	1
*	9241-169-002	Housing, Bearing	1	1
3	9036-159-002	Bearing, Front	1	1
4	9036-159-001	Bearing, Rear	1	1
5	9538-158-001	Spacer, Bearing	1	1
6	9487-238-001	Ring-Retainer, Internal	1	1
9	9532-140-003	Seal, Secondary	1	1
10	9532-140-002	Seal, Primary	1	1
11	9950-042-001	Ring, Seal Mtg	1	1
13	9962-008-003	Back Assy, Tub	1	1
14	9545-017-009	Screw	1	1
14	8640-417-002	Nut	6	6
14	8641-582-016	Lockwasher	6	6
15	9991-048-002	Support Assy, Bearing Housing	6	6
16	9545-029-003	Screw	6	6
16	8640-415-004	Nut	6	6
17	9453-168-002	Pulley, Driven	6	1
18	9487-234-001	Ring, Tolerance	1	1
19	8641-581-026	Washer	1	1
19	9545-017-009	Screw	1	1
19	8641-582-016	Lockwasher	1	1



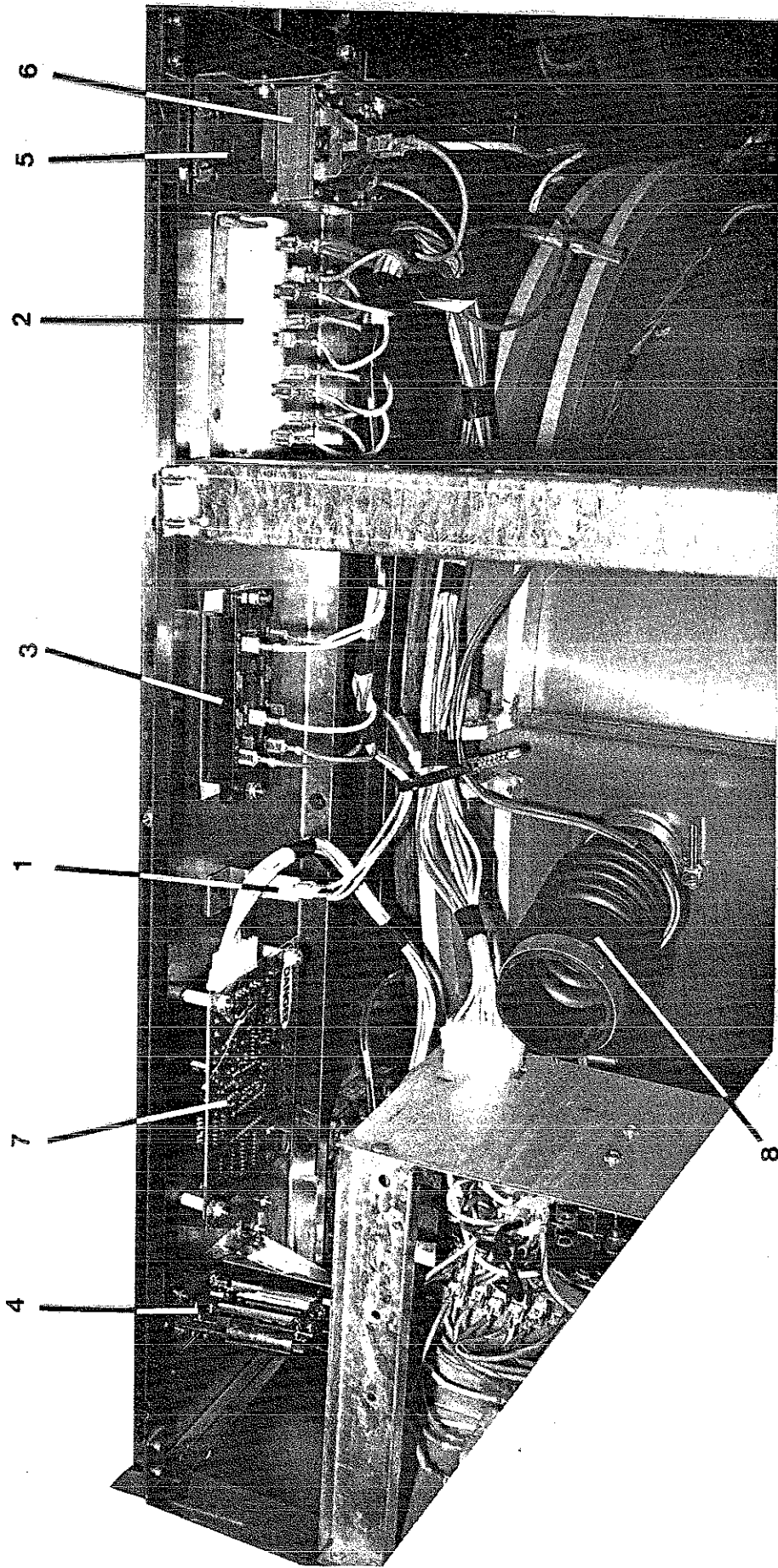
DOOR LOCK GROUP REMOTELY MOUNTED SOLENOID STYLE

			MODELS	
			W C K 4 A A	W C K 4 A B
Key	Part Number	Description		
*	9885-023-001	Lock Assy, Complete	1	1
1	9982-284-001	Plate Assy, Door Lock	1	1
2	8641-581-030	Washer, Flat	1	1
3	9008-005-001	Actuator, Latching Switch	1	1
4	9450-002-002	Pawl, Locking	1	1
5	8641-589-003	Washer, Spring	1	1
6	9487-200-004	Ring, Retaining	1	1
7		Grease	AR	AR
8	9029-035-001	Bracket, Switch	1	1
9	8640-413-002	Nut, Hex	2	2
10	9534-364-001	Spring, Actuating	1	1
11	9545-012-020	Screw, Hx	1	1
12	8640-413-004	Nut, Elastic Stop	2	2
13	9534-364-001	Spring, Return	2	2
14	9451-193-001	Pin, Guide	1	1
15	9487-200-005	Ring, Retaining	1	1
16	8641-581-031	Washer	2	2
	9534-364-002	Spring, Actuating	1	1
17	9539-461-003	Switch, Latching Sensing	1	1
18	9550-169-003	Shield, Switch	3	3
19	9545-020-001	Screw	2	2
20	8640-401-001	Nut, Twin	2	2
21	9539-461-004	Switch, Locking Sensing	2	2
22	9008-006-002	Actuator, Switch	2	2
23	9545-020-003	Screw	2	2
*	9552-037-001	Shim, Door Lock, Thin	AR	AR
*	9552-037-002	Shim, Door Lock Thick	AR	AR
*	9545-018-004	Screw, Lock mtg	3	3
*	8641-582-007	Lockwasher	3	3
*	9029-040-002	Bracket, Solenoid	1	1
*	9536-074-001	Solenoid	1	1
*	9545-008-001	Screw	4	4
*	8640-413-002	Nut	4	4
*	9497-225-004	Rod, Pull	1	1



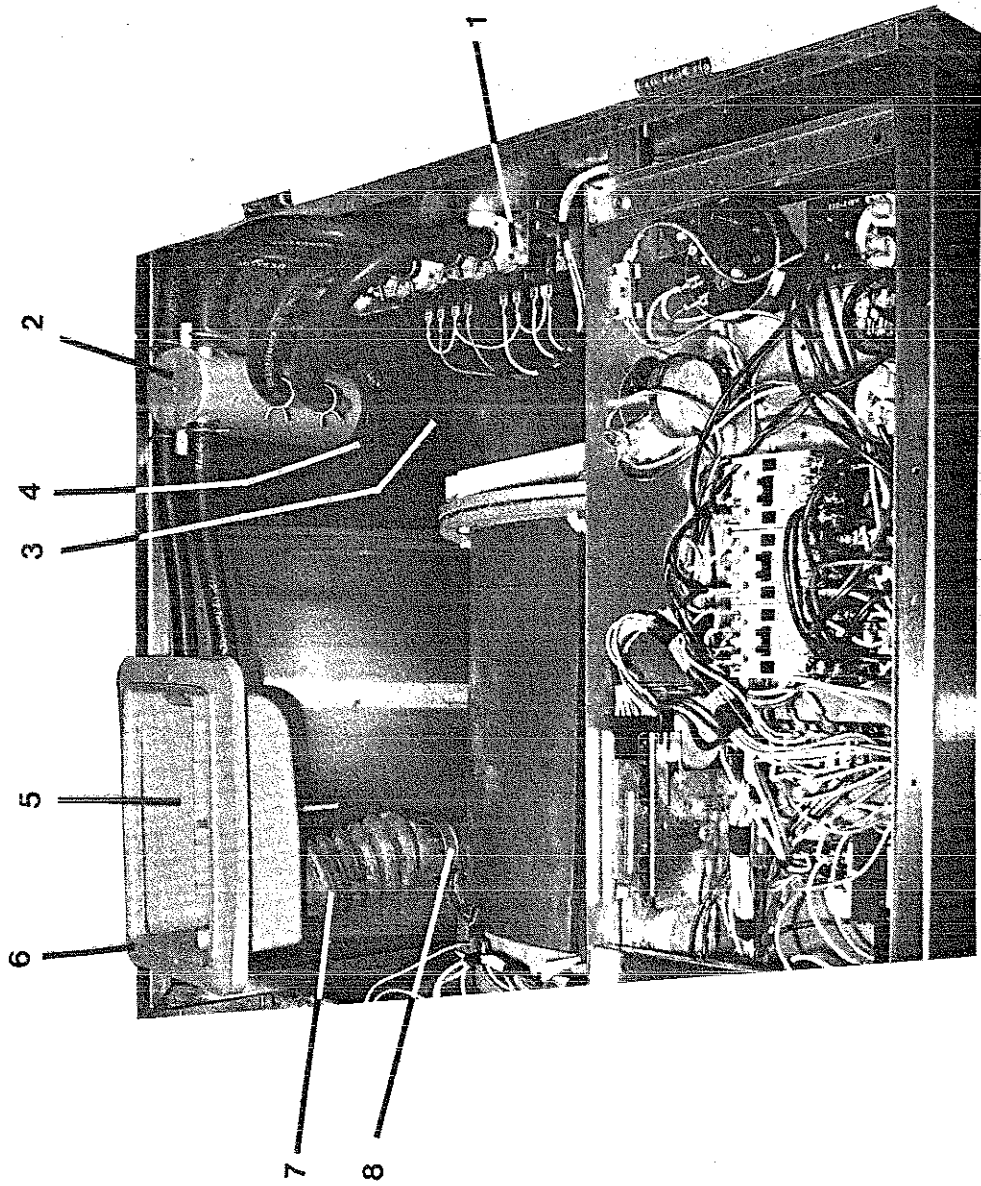
LOADING DOOR GROUP REMOTELY MOUNTED SOLENOID STYLE LOCK

Key	Part Number	Description	MODELS	
			W C K 4 A A	W C K 4 A B
1	9960-259-002	Loading Door, Complete	1	1
2	9487-230-001	Loading Door, Ring	1	1
3	9206-417-001	Gasket, Loading Door	1	1
4	9635-016-001	Window, Loading Door	1	1
5	9913-134-003	Shaft Assy, Locking	1	1
6	9537-195-002	Shaft, Door Locking	1	1
7	9095-040-001 <i>002</i>	Cam, Locking	1	1
8	9451-181-005	Pin, Groove (1 1/4")	1	1
9	9451-181-004	Pin, Groove (3/4")	1	1
*	9534-360-001	Spring, Lock Cam	1	1
10	9244-080-001	Handle, Door	1	1
*	9451-181-006	Pin, Door Handle (groove)	1	1
11	9955-028-003	Hinge Assy, Loading Door	1	1
*	9552-036-001	Shim, Loading Door Hinge, Thin	AR	AR
*	9552-036-002	Shim, Loading Door Hinge, Thick	AR	AR
*	9545-014-009	Screw, Hinge Mtg	3	3
*	8641-582-009	Lockwasher	3	3
13	9451-184-002	Pin, Loading Door Hinge	1	1
*	8649-031-000	Ring, Retaining	1	1
14	9079-122-001	Clamp, Loading Door Hinge Pin	1	1
*	9545-056-001	Screw, Loading Door Mtg	3	3
*	9487-233-001	Ring, Masking	1	1
*	9545-010-010	Screw	8	8
*	9059-063-003	Band, edge protector	1	1
*	9029-040-002	Bracket, Solenoid	1	1
*	9536-074-001	Solenoid	1	1
*	9545-008-001	Screw	4	4
*	8640-413-002	Nut	4	4
*	9497-225-004	Rod, Pull	1	1



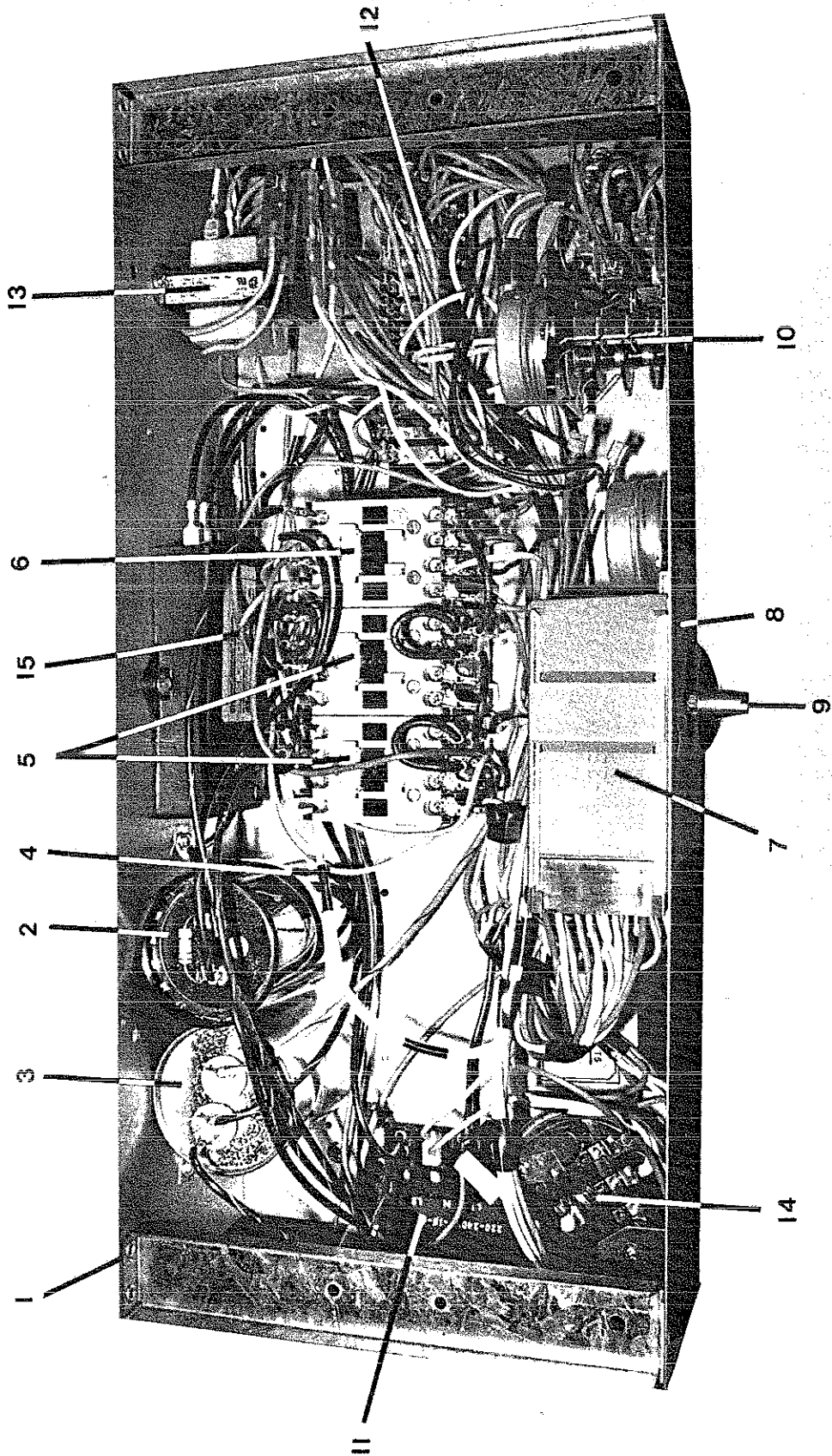
CONTROL PANEL GROUP

			MODELS	
			W C 4 A A	W C 4 A B
Key	Part Number	Description		
1	3310-042-001	Light, Bleach	1	1
2	3310-041-001	Light, Cycle Control	1	1
3	9539-479-001	Switch, Pushbutton (cycle selector)	1	1
	8502-629-001	Label, switch	1	1
*	8640-412-005	Nut, Switch Mtg.	2	2
4	9021-003-001	Acceptor, Coin	1	1
*	9545-020-002	Screw, Acceptor Mtg.	4	4
*	8640-424-002	Nut	4	4
*	9539-466-004	Switch, Coin	1	1
5	9029-040-002	Bracket, Solenoid	1	1
6	9536-074-001	Solenoid	1	1
*	9545-008-001	Screw	4	4
*	8640-413-002	Nut	4	4
*	9497-225-004	Rod, Pull	1	1
7	9020-004-001	Accumulator, Coin	1	1
*	9538-157-003	Spacer	3	3
*	8640-412-005	Nut, Hx	6	6
*	9550-171-001	Shield, Circuit Board	1	1
8	9242-450-001	Hose, Dispenser to Tub	1	1
*	8654-117-008	Clamp	2	2



SOAP HATCH AND WATER INLET GROUP

			MODELS	
			W C 4 A A	W C 4 A B
Key	Part Number	Description		
1	9379-183-001	Valve, Water Inlet	2	2
*	9555-056-001	Screen, Inlet	2	2
*	9089-017-001	Coil Assy., 120 V	2	2
*	9118-049-001	Diaphragm	2	2
*	9211-021-002	Guide, Solenoid	2	2
*	9015-008-001	Armature	2	2
*	9534-298-001	Spring, Armature	2	2
*	9545-008-005	Screw, Valve Mtg	4	4
2	8640-399-006	Nut, Spring	4	4
*	9610-001-001	Vacuum Breaker	1	1
*	9029-006-001	Bracket, Vacuum Breaker	1	1
*	9545-008-005	Screw	4	4
3	9242-458-002	Hose, Vacuum Breaker to Tub	1	1
4	8654-117-014	Clamp, Vacuum Breaker End	1	1
*	8654-117-009	Clamp, Tub End	1	1
5	9732-108-001	Dispenser	1	1
6	9206-416-001	Gasket, Dispenser	1	1
*	8640-399-007	Nut	4	4
7	9242-450-001	Hose, Dispenser to Tub	1	1
8	8654-117-008	Clamp, Dispenser Hose	2	2
9	9242-453-002	Hose, Hot Valve to Vac. Brkr	2	2
*	9242-453-004	Hose, Cold Valve to Vac. Brkr	2	2
*	9242-453-003	Hose, Vac. Brkr. to Wash Dis	1	1
*	9242-453-005	Hose, Vac. Brkr. to Rinse Dis	1	1
*	8654-040-000	Clamp, Hose-Spring	10	10
*	8654-117-002	Clamp, Hose-Worm	2	2



ELECTRICAL COMPONENTS TOP COMPARTMENT

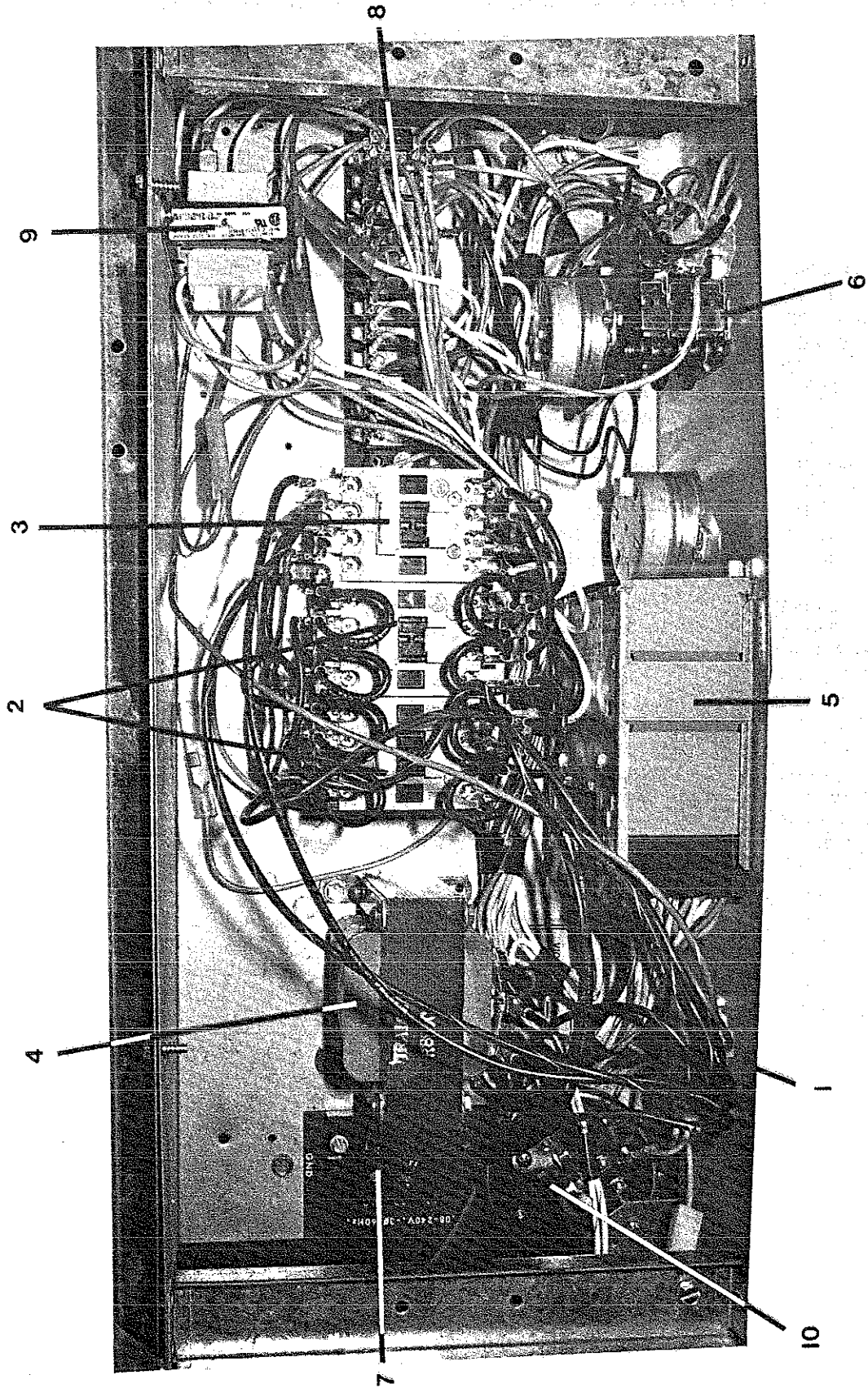
1 PHASE

MODEL

W
C
K
4
A
A

Key	Part Number	Description	
1	9839-012-001	Trough Assy, Controls Mtg	1
*	9029-010-002	Bracket, Trough to Rear Channel	1
*	9545-008-005	Screw	4
2	5191-102-005	Capacitor, Spin-Start (Century)	1
*	9483-002-001	Resistor, Bleed-off	1
3	5191-103-010	Capacitor, Run-Tumble (Century)	1
4	9544-049-002	Strap, Capacitor Mtg (Century)	1
*	9545-045-001	Screw, Capacitor Strap	2
5	5192-286-001	Relay, Tumble	2
6	5192-286-002	Relay, Spin	1
*	8652-132-001	Terminal, Relay Contacts	
*	8652-132-003	Terminal, Relay Coil	
7	9571-359-002	Timer, Program-After S/N 15440	1
7	9571-359-001	Timer, Program-Before S/N 15440	1
(VERIFY PART NUMBER ON TIMER BODY)			
*	9376-285-002	Motor, Timer Main Drive	1
*	9376-286-002	Motor, Timer Rapid Advance	1
*	9545-012-001	Screw, Timer	2
8	9107-066-002	Dial, Timer	1
9	9307-176-001	Knob, Timer (w/set screws)	1
10	9571-360-001	Timer, Reversing	1
*	9545-044-004	Screw, Reversing Timer	2
11	9897-028-001	Terminal Block, Power Connection	1
12	9897-029-001	Terminal Block Assy, 12 Lug	1
13	8711-003-001	Transformer, (for accumulator)	1
14	9539-457-001	Switch, Pressure	1
*	9488-008-002	Rail, Relay Mtg.	1
*	5198-211-004	Circuit Breaker, 1.5 amp	1
*	8652-130-037	Lug, Grounding	4
15	9539-478-001	Solid State Start Switch	1

93215

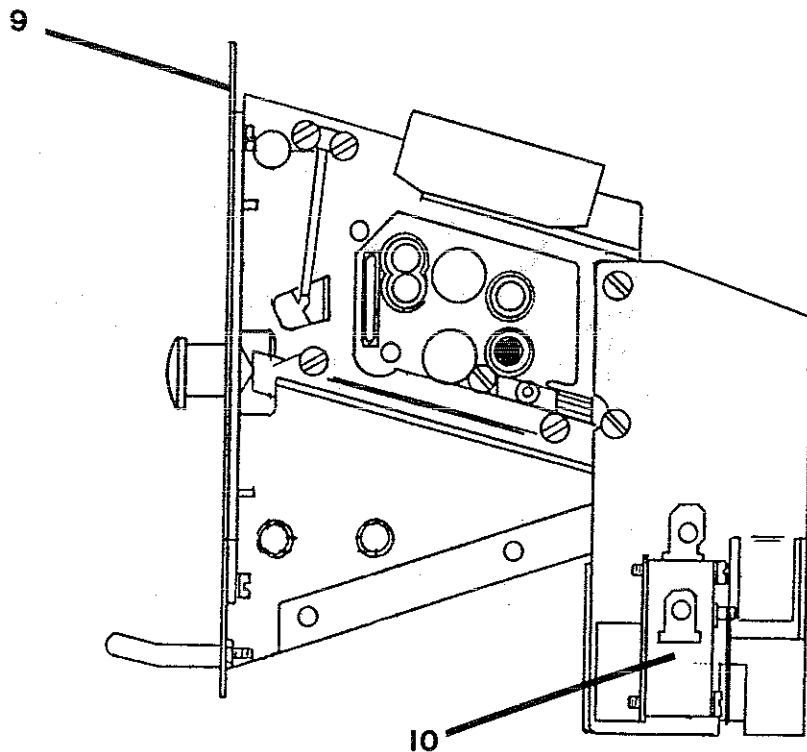


**ELECTRICAL COMPONENTS TOP COMPARTMENT
3 PHASE**

			MODEL
			W C K 4 A B
Key	Part Number	Description	
1	9839-012-001	Trough Assy, Controls Mtg	1
*	9029-010-002	Bracket, Trough to Rear Channel	1
*	9545-008-005	Screw	4
2	5192-286-001	Relay, Tumble	2
3	5192-286-003	Relay, Spin	1
4	8711-004-001	Transformer, Control	1
5	9571-359-002	Timer, Program-After S/N 15440	1
5	9571-359-001	Timer, Program-Before S/N 15440	1
(VERIFY PART NUMBER ON TIMER BODY)			
*	9376-285-002	Motor, Timer Main Drive	1
*	9376-286-002	Motor, Timer Rapid Advance	1
*	9545-012-001	Screw, Timer	2
*	9107-066-002	Dial, Timer	1
*	9307-176-001	Knob, Timer (w/set screws)	1
6	9571-360-001	Timer, Reversing	1
*	9545-044-004	Screw, Reversing Timer	2
7	9897-028-001	Terminal Block, Power Connection	1
8	9897-029-001	Terminal Block Assy, 12 Lug	1
9	8711-003-001	Transformer, (For Accumulator)	1
10	9539-457-001	Switch, Pressure	1
*	9488-008-002	Rail, Relay Mtg.	1
*	5198-211-004	Circuit Breaker, 1.5 amp	1
*	8652-130-037	Lug, Grounding	4

COIN HANDLING GROUP

Key	Part Number	Description	MODELS	
			W C K 4 A A	W C K 4 A B
1	9942-024-006	Vault, Assy	1	1
*	9545-008-005	Screw, Vault Mtg	4	4
2	9807-077-007	Box Assy., Coin	1	1
3	8650-012-002	Lock, Coin Box (w/key)	1	1
4	9349-033-001	Latch, Coin Box	1	1
5	8641-569-002	Washer, Wave	1	1
6	8641-583-001	Washer, Keeper	1	1
7	8641-581-008	Washer, Spacer — Thick		
7	8641-581-010	Washer, Spacer — Thin		
8	9940-014-004	Chute Assy., Coin	1	1
*	9545-045-001	Screw, Chute Mtg	1	1
9	9021-003-001	Acceptor, Coin	1	1
*	9545-020-002	Screw, Acceptor Mtg	4	4
*	8640-424-002	Nut	4	4
10	9539-466-004	Switch, Coin	1	1

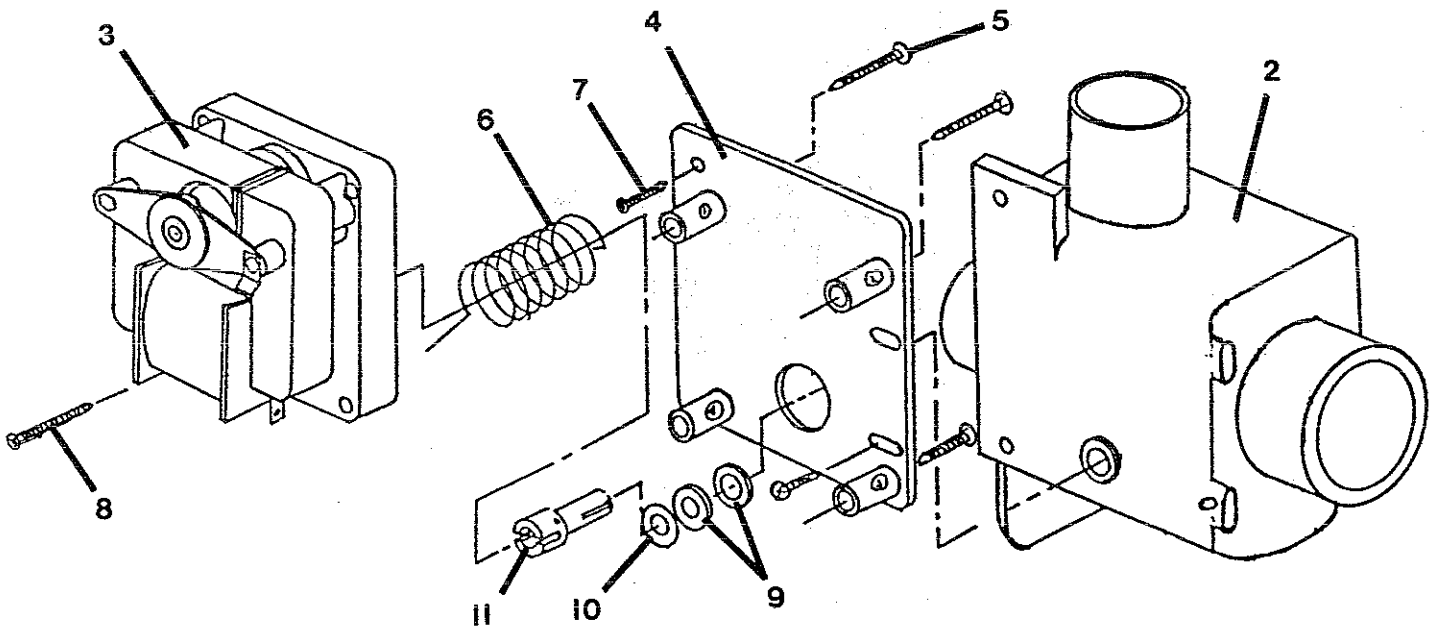


GRAVITY DRAIN VALVE GROUP

MODELS

W	W
C	C
K	K
4	4
A	A
A	B

Key	Part Number	Description	W	W
1	9379-187-001	Valve, Drain	1	1
2	9064-070-001	Body, Valve (w/ ball)	1	1
3	9914-137-001	Motor & Gear Train	1	1
4	9452-538-001	Plate, Motor Mtg	1	1
5	8639-994-001	Screw	3	3
6	9534-339-001	Spring, Drive	1	1
7	9545-054-001	Screw	2	2
8	9545-054-002	Screw	1	1
9	9532-134-001	Seal, V Packer	2	2
10	8641-584-001	Washer	1	1
11	9451-196-001	Pin, Main Drive	1	1



WIRING HARNESS GROUP

		MODELS	
		W C K 4 A A	W C K 4 A B
Part Number	Description		
USE FOLLOWING TWO ITEMS WITH TIMER PART NUMBER 9571-359-001			
9627-680-001	Wiring Harness, Main	1	1
9627-681-001	Wiring Harness, Control	1	1
USE FOLLOWING TWO ITEMS WITH TIMER PART NUMBER 9571-359-002			
9627-680-002	Wiring Harness, Main	1	1
9627-681-002	Wiring Harness, Control	1	1
9627-682-001	Wiring Harness, Coin accumulator	1	1
9627-683-001	Wiring Harness, Drain Valve	1	1
* 8654-125-001	Clamp, Cable — ¼ Dia	1	1
* 8654-125-003	Clamp, Cable — 7/16 Dia	3	3
* 8654-125-004	Clamp, Cable — ¾ Dia	1	1

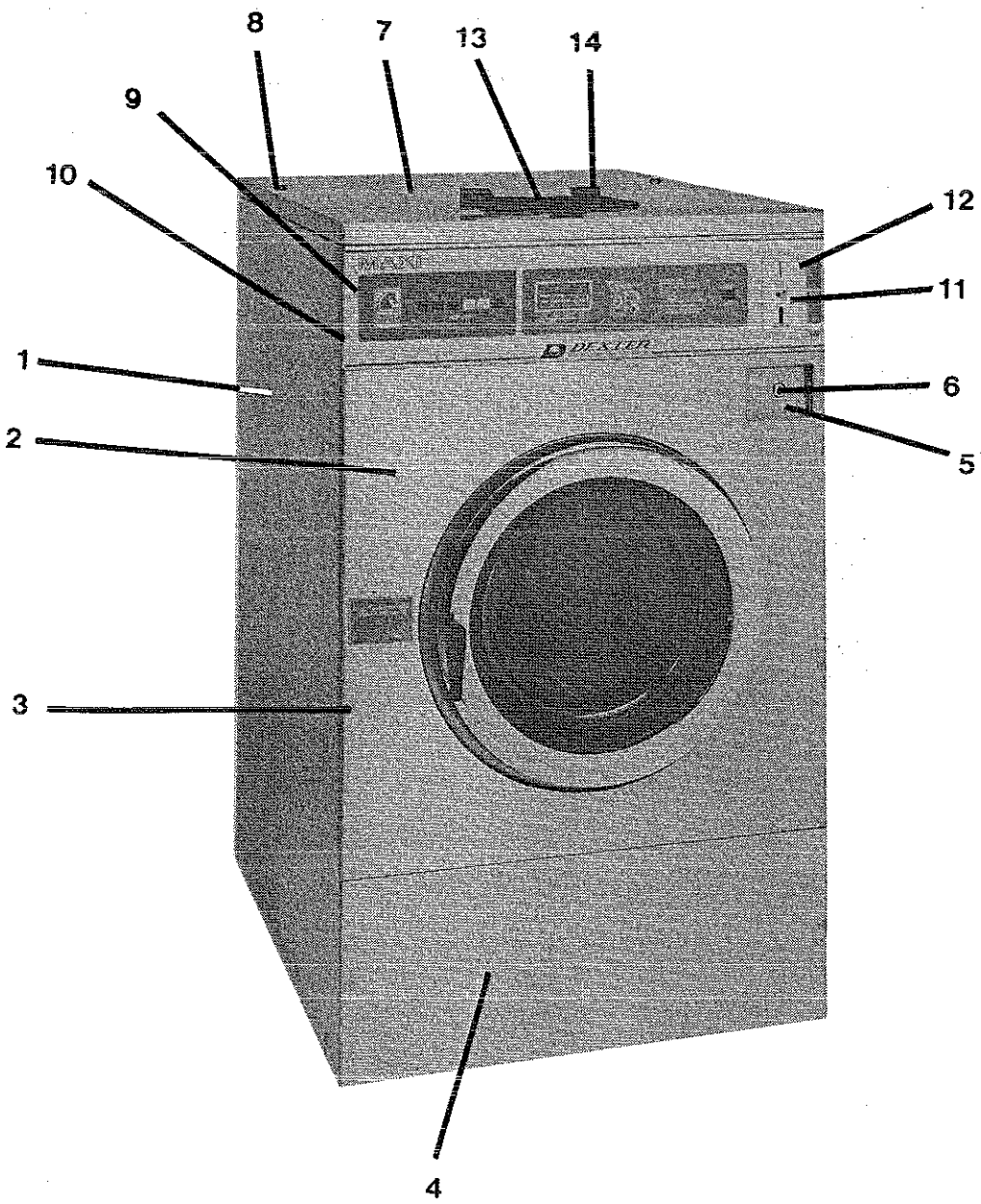
PARTS DATA THOROUGHbred 600

NOTE:

SERIES.	WCK6AA — 220-240 VOLTS, 60 HZ, 1 PHASE
	WCK6AB — 208-240 VOLTS, 60 HZ, 3 PHASE

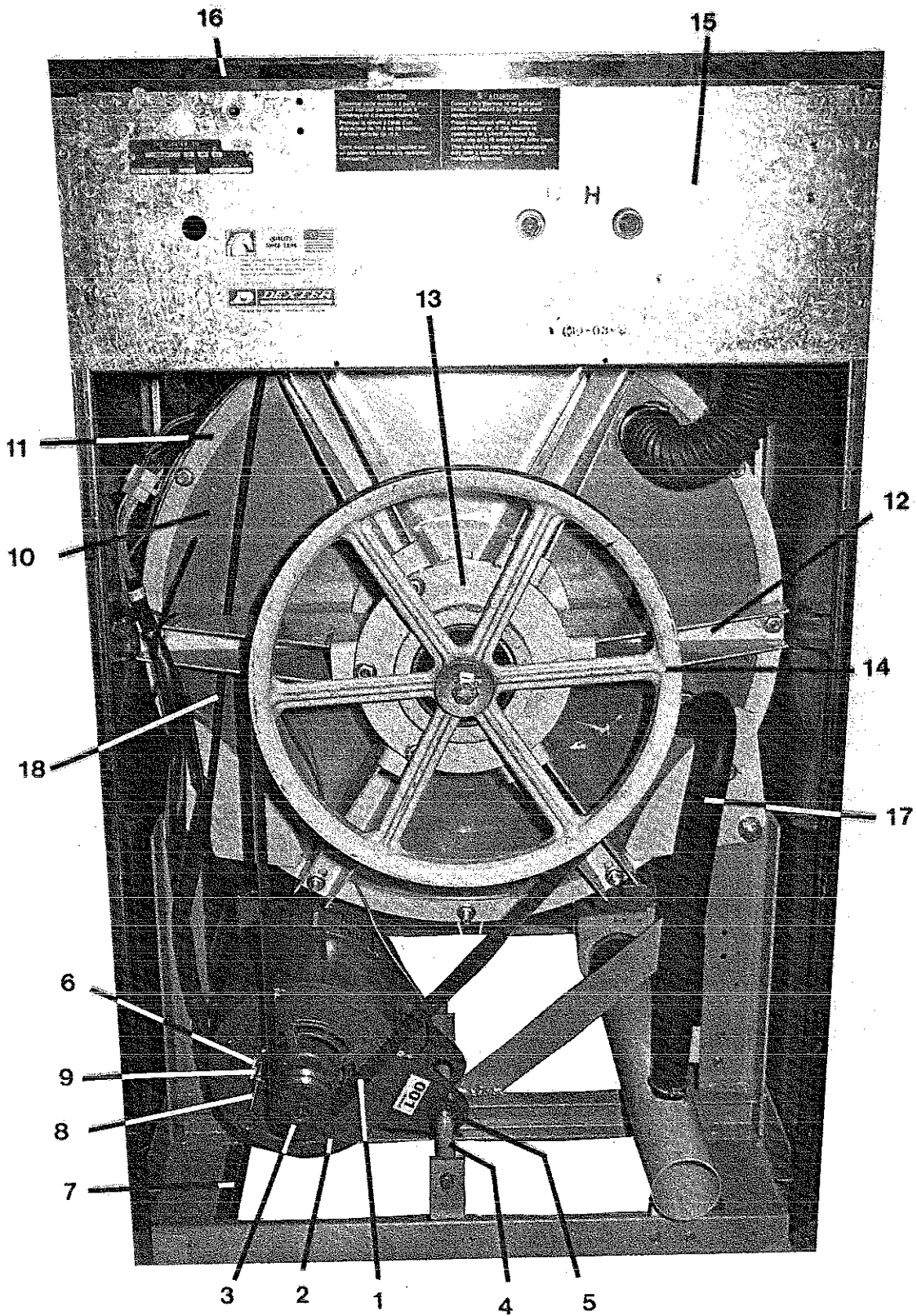
ACCESSORIES

Part Number	Description	
9990-027-011	Hose, Water Supply (furnished)	2
8641-242-000	Washer, Inlet Hose (furnished)	2
9565-003-001	Strainer, Inlet Hose (furnished)	2
9732-069-001	Hour Meter Kit	
9249-001-001	Hourmeter	
9732-106-003	Manual Operation Kit	
9539-474-001	Switch, Blk/Red	
9539-474-002	Switch, Blk/Wht	
8545-051-003	Special Tool For Removing Coin Acceptor Mounting Screws. (Torx Size T-10)	



CABINET AND FRONT PANEL GROUP

Key	Part Number	Description	MODELS	
			W C K 6 A A	W C K 6 A B
1	9989-449-001	Panel, Side (Left or Right) — Stainless	2	2
*	9545-030-002	Screw, (Side Panel to Base)	8	8
*	8641-582-007	Lockwasher	8	8
2	9989-448-001	Panel Assy, Front	1	1
*	9059-063-002	Band, Edge Protector	1	1
*	8640-413-005	Nut, Whizlock	3	3
*	9545-012-015	Screw, Hex	5	5
3	9545-008-014	Screw, Flat Head	2	2
3	8641-585-001	Washer, Finish	2	2
4	9108-097-001	Door, Lower Service	1	1
*	9545-018-015	Screw, Attachment	2	2
*	8640-399-004	Nut, Spring	2	2
5	9807-077-007	Box Assy, Coin (See Coin Box Group)	1	1
6	8650-012-002	Lock, Coin Box (See Coin Box Group)	1	1
*	9942-026-002	Vault Assy, Coin	1	1
*	9545-008-005	Screw, Vault Mounting	4	4
7	9454-654-001	Panel, Top	1	1
8	8650-018-010	Lock, Top (w/Key)	2	2
*	6292-006-008	Key, Top		
*	9086-018-001	Catch, Top Panel — Left	1	1
*	9086-018-002	Catch, Top Panel — Right	1	1
*	9545-008-015	Screw, Top Panel Locator	2	2
9	9412-076-002	Nameplate, Control Panel	1	1
10	9989-447-001	Panel, Control (Mounts Nameplate)	1	1
*	9545-008-005	Screw, Control Panel Mtg	4	4
11	9021-003-001	Acceptor, Coin (25¢)	4	1
12	9545-020-002	Screw, Acceptor Mounting	4	4
*	8640-424-002	Nut, Acceptor Mounting	4	4
	8502-624-001	Label, Door Opening	1	1
13	9108-095-001	Door, Dispenser	1	1
14	9467-025-001	Post, Door Mounting	2	2
*	9451-191-001	Pin, Plain	2	2
*	9545-045-002	Screw, Dispenser Post Mtg.	4	4
*	9545-008-012	Screws, Dispenser Mounting	4	4
*	8640-399-007	Nuts, Spring	4	4
*	NOT ILLUSTRATED	Used throughout parts data section of book.		

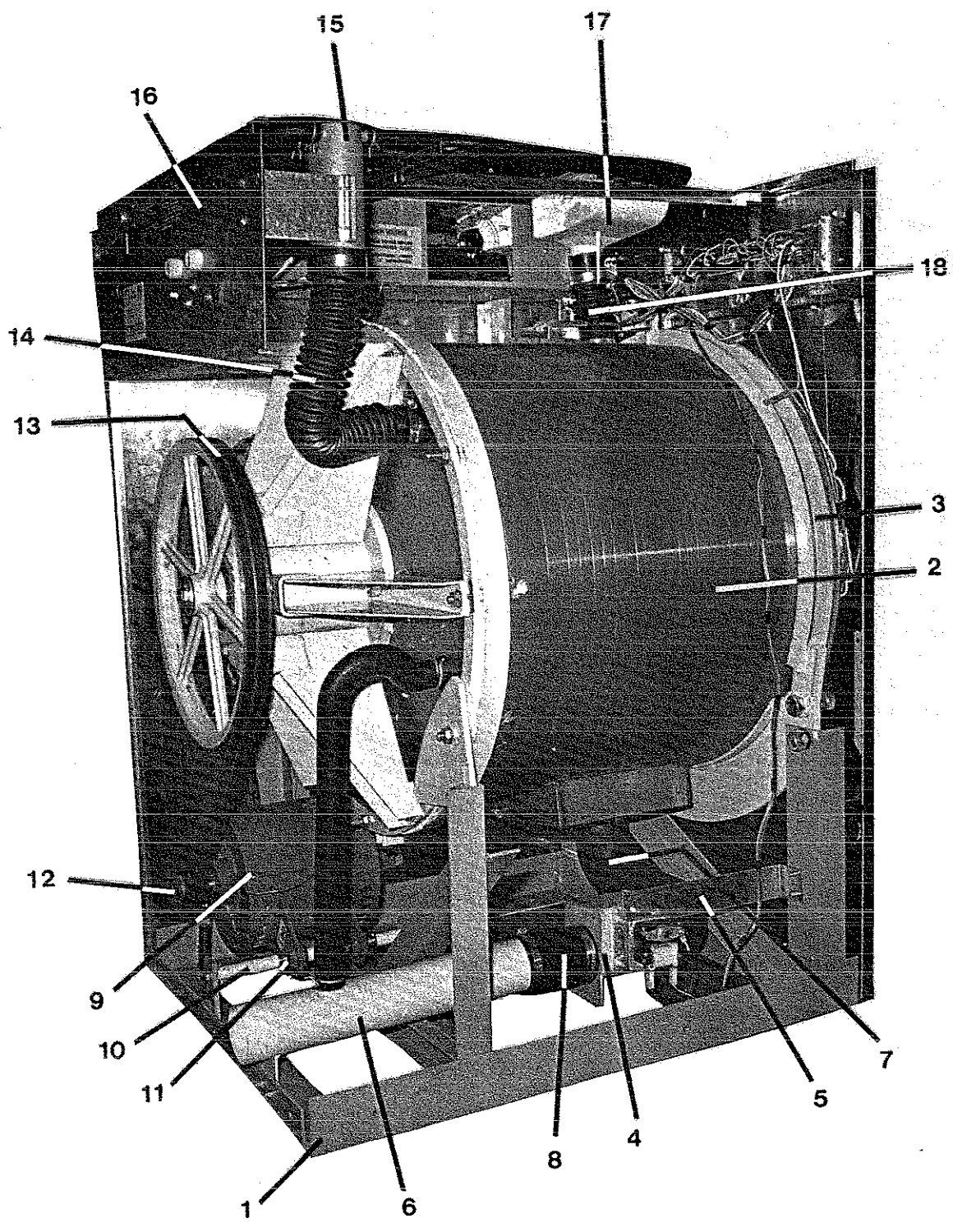


DRIVE AND SUPPORT GROUP (A)

Key	Part Number	Description	MODELS	
			W C K 6 A A	W C K 6 A B
1	9040-076-005	Drive Belt	2	2
2	9376-293-012	Drive Motor, 1 Phase (Century)	1	
2	9376-293-008	Drive Motor, 3 Phase (Century)		1
3	9453-170-002	Pulley, Motor-Century	1	1
*	9545-028-013	Screw, Set	2	2
4	9497-222-004	Rod, Motor Mtg	1	1
*	9545-029-005	Screw	1	1
*	8641-582-014	Lockwasher	1	1
5	9076-052-002	Collar, Shaft (w/set screws)	3	3
6	9029-027-003	Strap, Motor Tension	1	1
7	9534-319-002	Spring, Belt Tension	1	1
8	9545-055-001	Bolt, Eye	1	1
9	8640-414-003	Nut	1	1
10	9962-008-002	Back Assy., Tub	1	1
11	9950-041-004	Ring Assy., Tub Mtg. — Rear	1	1
12	9991-051-002	Support Assy., Bearing Hsg	6	6
13	9241-180-002	Housing, Bearing	1	1
14	9453-168-003	Pulley, Driven	1	1
15	9081-104-001	Channel, Rear	1	1
*	9545-008-005	Screw	4	4
*	8640-399-004	Nut, Spring	14	14
16	9454-654-001	Panel, Top	1	1
17	9242-449-002	Hose, Overflow	1	1
*	8654-029-000	Clamp, Hose	2	2
*	9989-446-001	Panel Assy., Back	1	1
*	9545-008-005	Screw	10	10
*	8640-399-004	Nut, Spring	10	10
18	9242-175-002	Hose, Pressure Switch	1	1
*	8654-059-000	Clamp, Pressure Sw. Hose	1	1

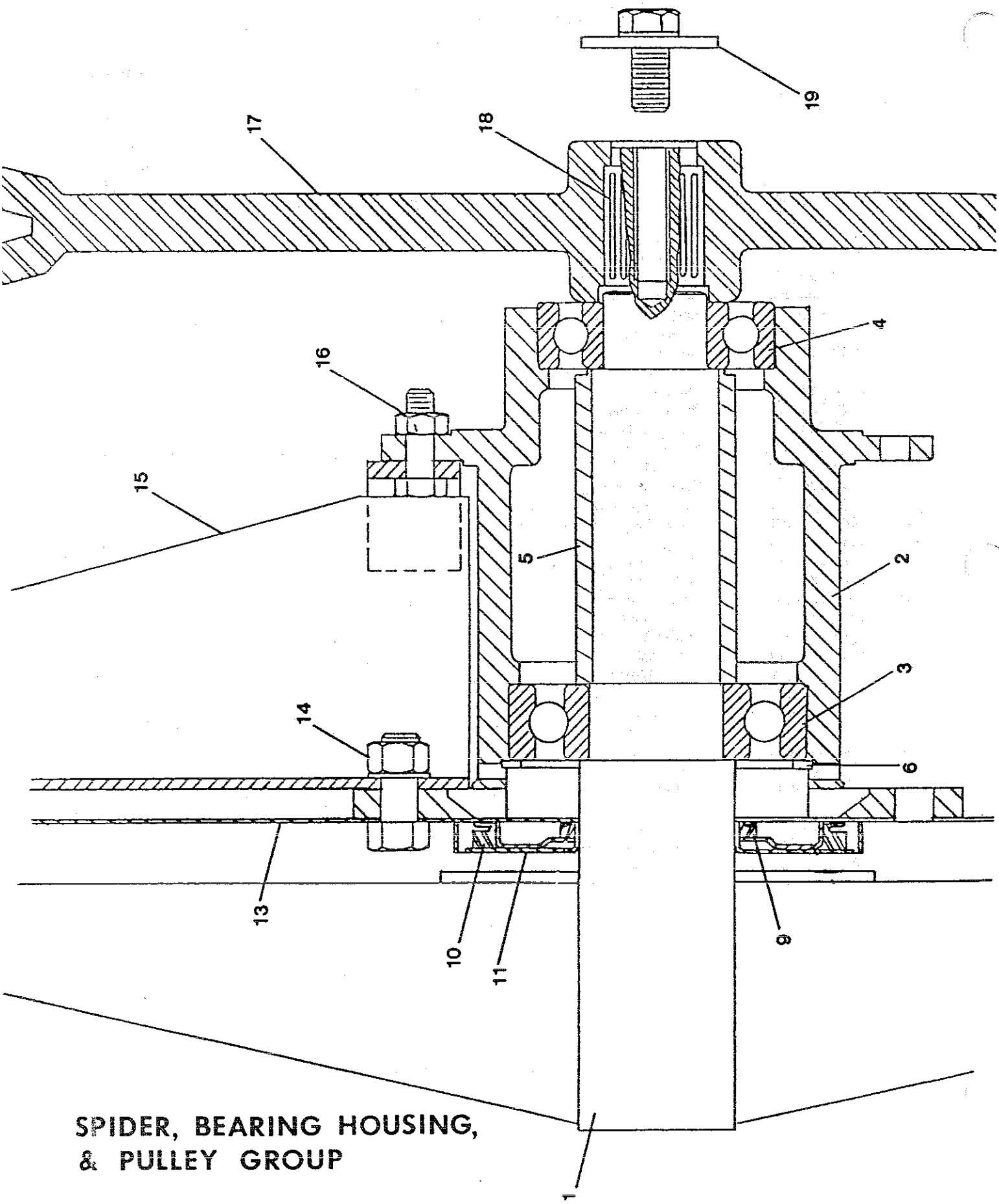
DRIVE AND SUPPORT GROUP (B)

Key	Part Number	Description	MODELS	
			W C K 6 A A	W C K 6 A B
1	9040-076-005	Drive Belt	2	2
2	9376-293-012	Drive Motor, 1 Phase (Century)	1	
2	9376-293-008	Drive Motor, 3 Phase (Century)		1
3	9453-170-002	Pulley, Motor-Century	1	1
*	9545-028-013	Set Screw	2	2
4	9497-222-004	Rod, Motor Mtg.	1	1
*	9545-029-005	Screw	1	1
*	8641-582-014	Lockwasher	1	1
5	9076-052-002	Collar, Shaft (w/set screws)	3	3
6	9029-027-003	Strap, Motor Tension	1	1
7	9534-319-002	Spring, Belt Tension	1	1
8	9545-055-001	Bolt, Eye	1	1
9	8640-414-003	Nut	1	1
10	9962-008-002	Back Assy., Tub	1	1
11	9950-041-004	Ring Assy., Tub Mtg. — Rear	1	1
12	9991-051-002	Support Assy., Bearing Hsg.	6	6
13	9241-180-002	Housing, Bearing	1	1
14	9453-168-003	Pulley, Driven	1	1
15	9242-449-002	Hose, Overflow	1	1
*	8654-029-000	Clamp, Hose	2	2
16	9545-059-002	Screw (2")	10	10
16	8640-416-005	Nut	10	10
17	9545-059-002	Screw (2")	2	2
17	8640-416-005	Nut	2	2
18	9242-175-002	Hose, Pressure Switch	1	1
*	8654-059-000	Clamp, Pressure Sw. Hose	1	1



CHASSIS AND DRAIN GROUP

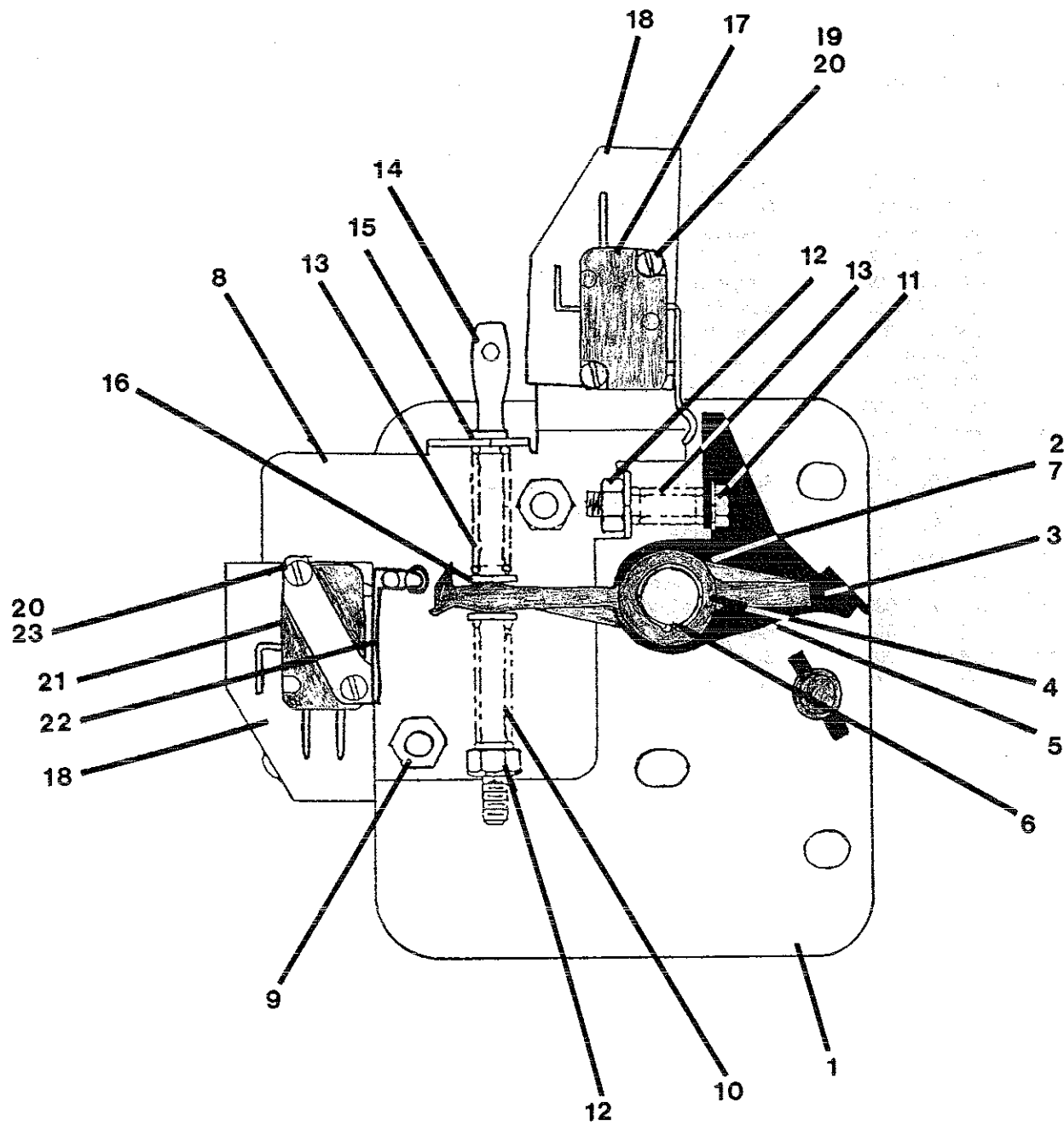
Key	Part Number	Description	MODELS	
			W C K 6 A A	W C K 6 A B
1	9945-097-002	Base Assy, Frame	1	1
2	9930-136-001	Tub Assy	1	1
*	9967-009-002	Cradle Ass'y, Tub	1	1
3	9950-050-002	Ring Assy, Tub Mtg.—Front	2	2
*	9545-060-002	Bolt, 5/8-11x2 1/2	3	3
*	9545-060-001	Bolt, 5/8-11x1 1/2	4	4
*	8641-582-018	Lockwasher	5	5
*	8640-425-001	Nut, Hex	9	9
4	9379-187-001	Valve, Drain	1	1
5	9029-052-001	Bracket, Drain Valve	1	1
*	9545-048-001	Screw, Valve to Bracket	1	1
*	9545-030-002	Screw, Bracket Mtg	2	2
6	9915-118-002	Tube Assy, Drain	1	1
*	9545-030-002	Screw, Tube Mtg	2	2
7	9242-456-001	Hose, Tub to Drain Valve	1	1
8	9242-457-001	Hose, Drain Valve to Tube	1	1
*	8654-117-014	Clamp, Hose	4	4
9	9376-293-012	Motor, Drive (1 PH)	1	
9	9376-293-008	Motor, Drive (3 PH)		1
10	9497-222-004	Rod, Motor Mtg	1	1
11	9076-052-002	Collar, Shaft	2	2
*	9545-029-005	Screw, Motor Mtg Rod	1	1
*	8641-582-014	Lockwasher	1	1
12	9453-170-002	Pulley, Motor	1	1
*	9545-028-013	Set Screw, long	2	2
13	9040-076-005	Belt, Drive	2	2
*	9552-038-001	Shim, Support Assembly	AR	AR
14	9242-458-002	Hose, Vacuum Brkr. to Tub	1	1
15	9610-001-001	Vacuum Breaker	1	1
16	9081-104-001	Channel, Rear	1	1
17	9732-108-001	Dispenser	1	1
*	9206-416-001	Gasket, dispenser	1	1
18	9242-450-001	Hose, Dispenser to Tub	1	1
*	8654-117-008	Clamp, Dispenser Hose	2	2



SPIDER, BEARING HOUSING,
& PULLEY GROUP

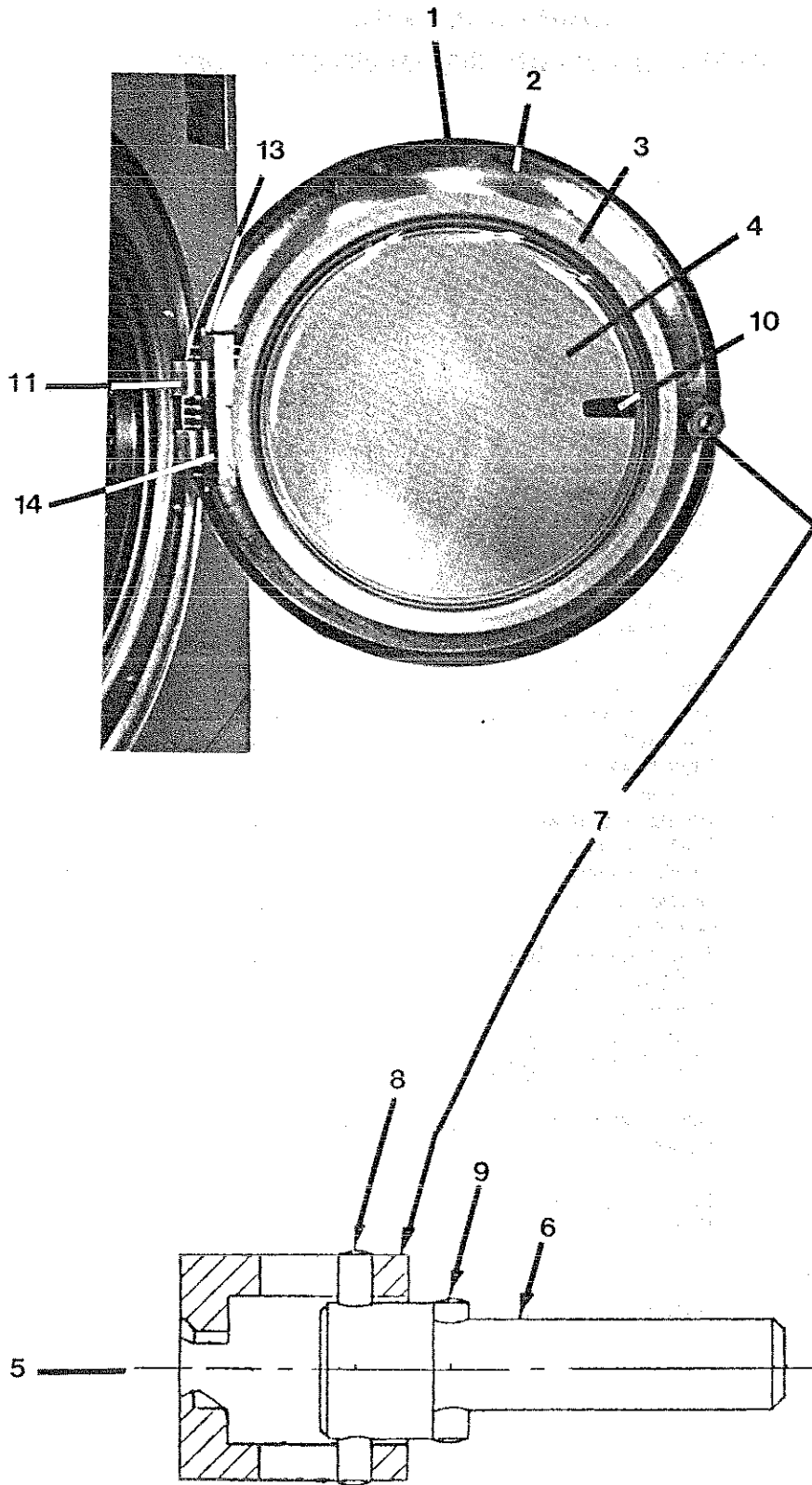
SPIDER, BEARING HOUSING AND PULLEY GROUP

Key	Part Number	Description	MODELS	
			W C K 6 A A	W C K 6 A B
1	9848-113-001	Cylinder, Assy	1	1
2	9803-186-001	Housing, Bearing-Assembly (includes items #2-#7	1	1
*	9241-180-002	Housing, Bearing	1	1
3	9036-159-005	Bearing, Front	1	1
4	9036-159-004	Bearing, Rear	1	1
5	9538-167-001	Spacer, Bearing	1	1
6	9487-238-003	Ring-Retainer, Internal	1	1
9	9532-140-006	Seal, Secondary	1	1
10	9532-140-002	Seal, Primary	1	1
11	9950-048-001	Ring, Seal Mtg	1	1
13	9962-008-002	Back Assy, Tub	1	1
14	9545-017-009	Screw	1	1
14	8640-417-002	Nut	6	6
14	8641-582-016	Lockwasher	6	6
15	9991-051-002	Support Assy., Bearing Housing	6	6
16	9545-060-001	Screw	6	6
16	8641-582-018	Lockwasher	6	6
16	8640-425-001	Nut	6	6
17	9453-168-003	Pulley, Driven	6	1
18	9487-234-003	Ring, Tolerance	1	1
19	8641-581-032	Washer	1	1
19	9545-060-001	Screw	1	1
19	8641-582-018	Washer	2	2



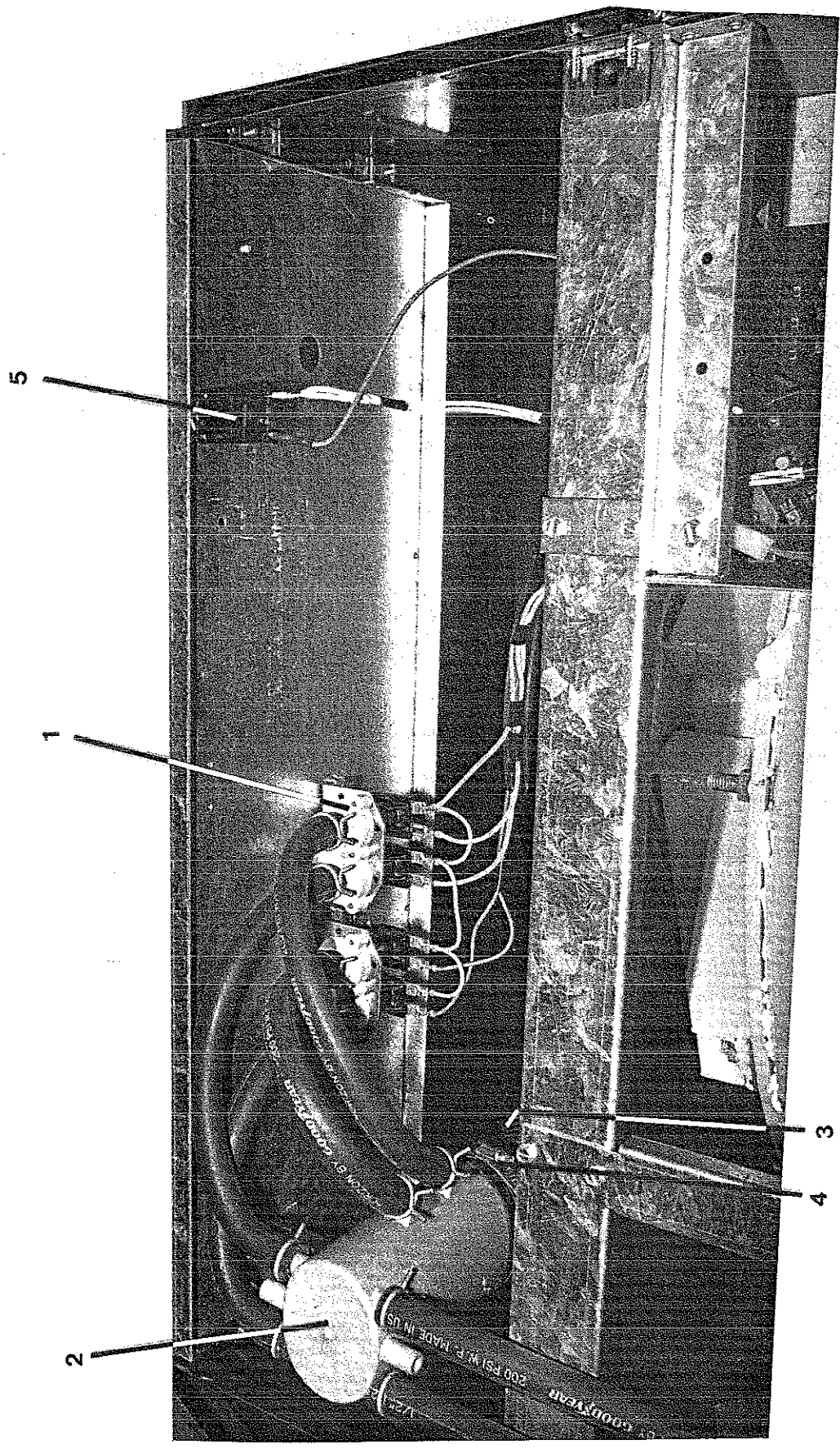
DOOR LOCK GROUP REMOTELY MOUNTED SOLENOID STYLE

Key	Part Number	Description	MODELS	
			W C K 6 A A	W C K 6 A B
*	9885-023-001	Lock Assy, Complete	1	1
1	9982-284-001	Plate Assy, Door Lock	1	1
2	8641-581-030	Washer, Flat	1	1
3	9008-005-001	Actuator, Latching Switch	1	1
4	9450-002-002	Pawl, Locking	1	1
5	8641-569-003	Washer, Spring	1	1
6	9487-200-004	Ring, Retaining	1	1
7		Grease	AR	AR
8	9029-035-001	Bracket, Switch	1	1
9	8640-413-002	Nut, Hex	2	2
10	9534-364-001	Spring, Actuating	1	1
11	9545-012-020	Screw, Hx	1	1
12	8640-413-004	Nut, Elastic Stop	2	2
13	9534-364-001	Spring, Return	2	2
14	9451-193-001	Pin, Guide	1	1
15	9487-200-005	Ring, Retaining	1	1
16	8641-581-031	Washer	2	2
	9534-364-002	Spring, Actuating	1	1
17	9539-461-003	Switch, Latching Sensing	1	1
18	9550-169-003	Shield, Switch	3	3
19	9545-020-001	Screw	2	2
20	8640-401-001	Nut, Twin	2	2
21	9539-461-004	Switch, Locking Sensing	2	2
22	9008-006-002	Actuator, Switch	2	2
23	9545-020-003	Screw	2	2
*	9552-037-001	Shim, Door Lock, Thin	AR	AR
*	9552-037-002	Shim, Door Lock Thick	AR	AR
* *	9545-018-004 8641-582-007	Screw, Lock mtg Lockwasher	3 3	3 3
* * * * *	9029-040-002 9536-074-001 9545-008-001 8640-413-002 9497-225-003	Bracket, Solenoid Solenoid Screw Nut Rod, Pull	1 1 4 4 1	1 1 4 4 1



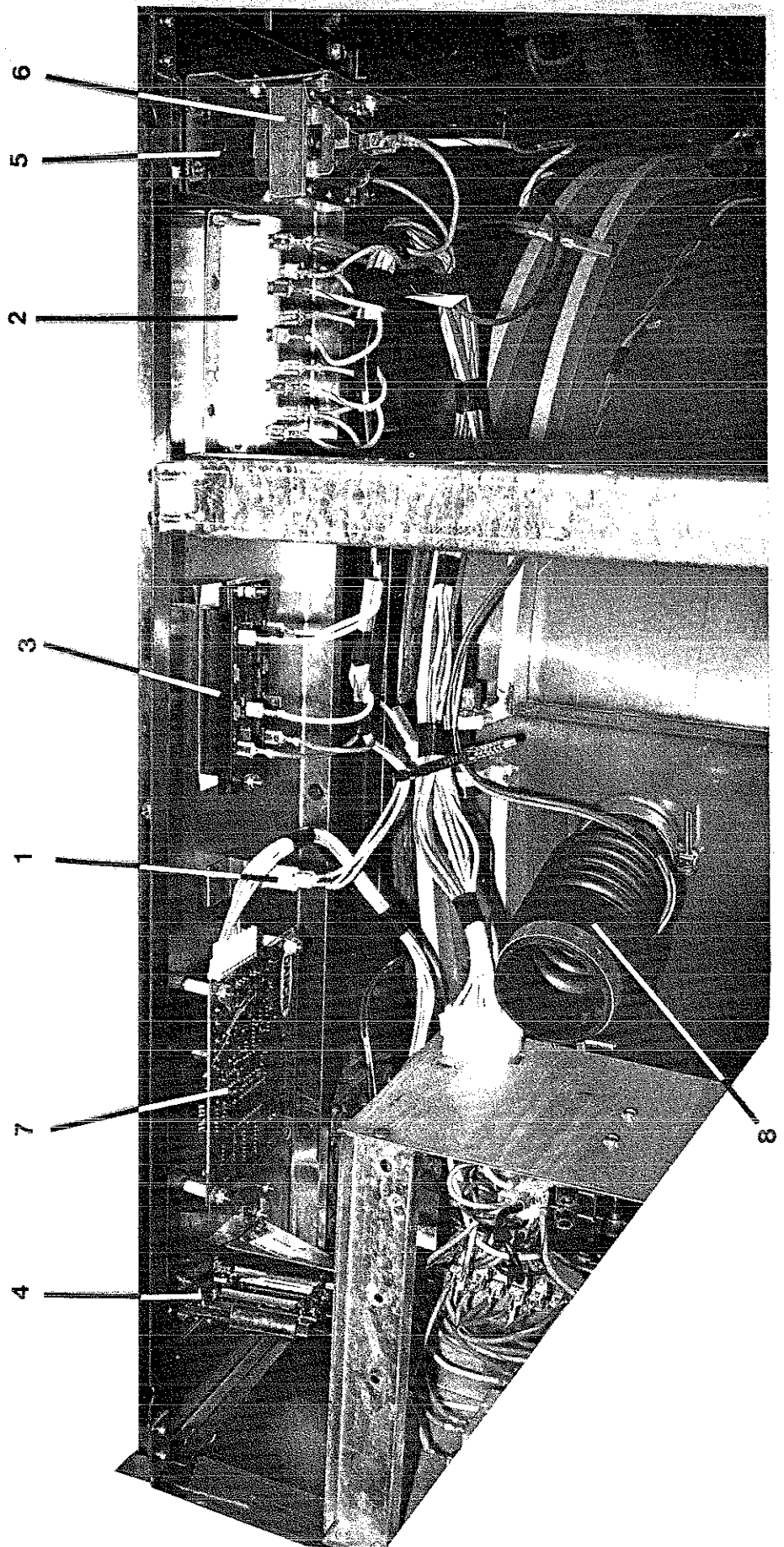
LOADING DOOR GROUP REMOTELY MOUNTED SOLENOID STYLE LOCK

Key	Part Number	Description	MODELS	
			W C K 6 A A	W C K 6 A B
1	9960-259-002	Loading Door, Complete	1	1
2	9487-230-001	Loading Door, Ring	1	1
3	9206-417-001	Gasket, Loading Door	1	1
4	9635-016-001	Window, Loading Door	1	1
5	9913-134-003	Shaft Assy, Locking	1	1
6	9537-195-002	Shaft, Door Locking	1	1
7	9095-040-001	Cam, Locking	1	1
8	9451-181-005	Pin, Groove (1¼")	1	1
9	9451-181-004	Pin, Groove (¾")	1	1
*	9534-360-001	Spring, Lock Cam	1	1
10	9244-080-001	Handle, Door	1	1
*	9451-181-006	Pin, Door Handle (groove)	1	1
11	9955-028-003	Hinge Assy, Loading Door	1	1
*	9552-036-001	Shim, Loading Door Hinge, Thin	AR	AR
*	9552-036-002	Shim, Loading Door Hinge, Thick	AR	AR
*	9545-014-009	Screw, Hinge Mtg	3	3
*	8641-582-009	Lockwasher	3	3
13	9451-184-002	Pin, Loading Door Hinge	1	1
*	8649-031-000	Ring, Retaining	1	1
14	9079-122-001	Clamp, Loading Door Hinge Pin	1	1
*	9545-056-001	Screw, Loading Door Mtg	3	3
*	9487-254-001	Ring, Masking	1	1
*	8640-413-002	Nut, Keps	4	4
*	9029-040-002	Bracket, Solenoid	1	1
*	9536-074-001	Solenoid	1	1
*	9545-008-001	Screw	4	4
*	8640-413-002	Nut	4	4
*	9497-225-003	Rod, Pull	1	1



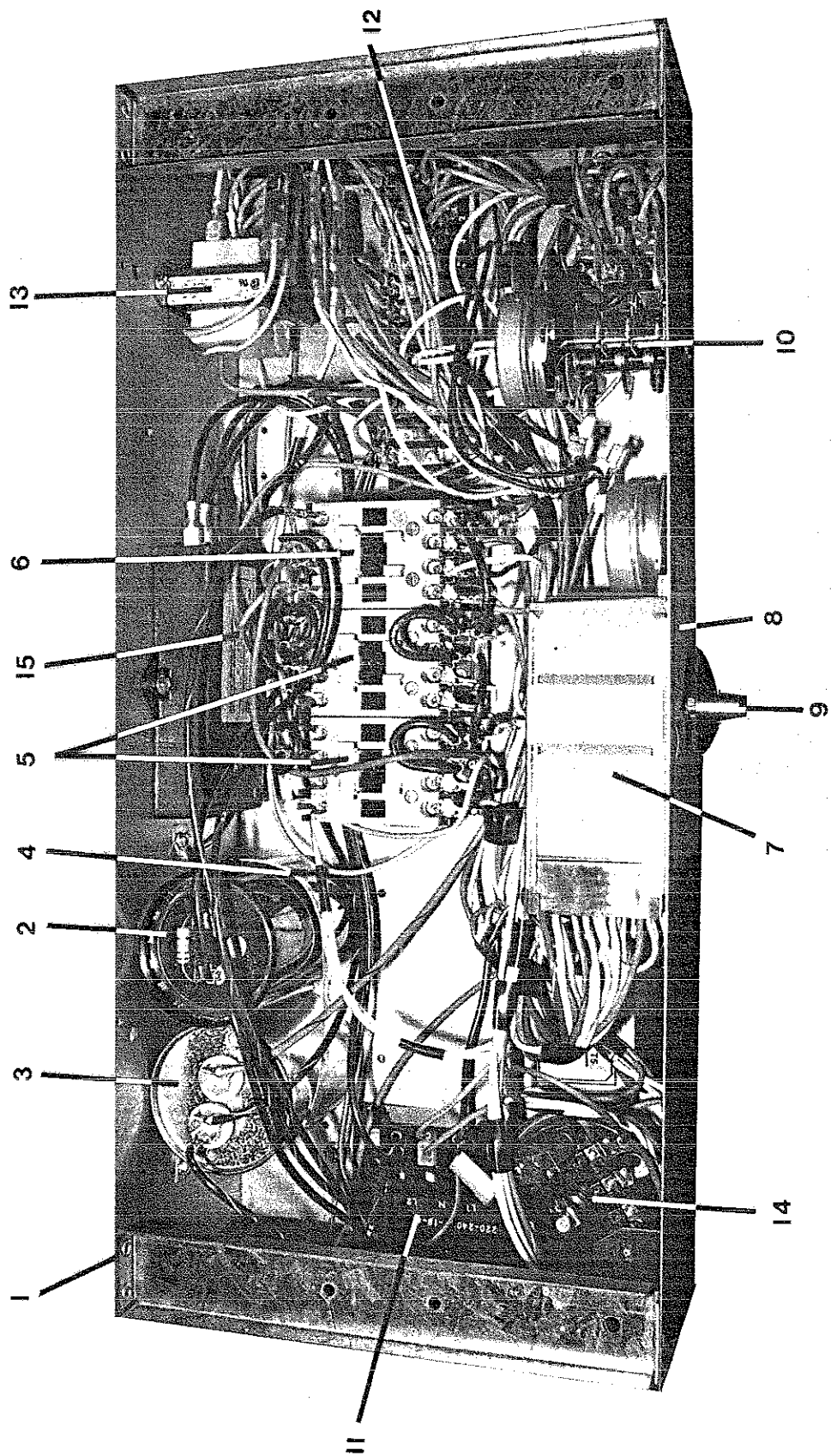
WATER INLET GROUP

Key	Part Number	Description	MODELS	
			W C K 6 A A	W C K 6 A B
1	9379-183-001	Valve, Water Inlet	2	2
*	9555-056-001	Screen, Inlet	2	2
*	9089-017-001	Coil Assy., 120 V	2	2
*	9118-049-001	Diaphragm	2	2
*	9211-021-002	Guide, Solenoid	2	2
*	9015-008-001	Armature	2	2
*	9534-298-001	Spring, Armature	2	2
*	9545-008-005	Screw, Valve Mtg.	4	4
*	8640-399-006	Nut, Spring	4	4
2	9610-001-001	Vacuum Breaker	1	1
*	9029-006-001	Bracket, Vacuum Breaker	1	1
*	9545-008-005	Screw	4	4
3	9242-458-002	Hose, Vacuum Breaker to Tub-Ribbed	1	1
4	8654-117-014	Clamp, Vacuum Brkr. End	1	1
*	8654-117-009	Clamp, Tub End	1	1
*	9242-453-002	Hose, Hot Valve to Vac. Brkr.	2	2
*	9242-453-004	Hose, Cold Valve to Vac. Brkr.	2	2
*	9242-453-008	Hose, Vac. Brkr. to Wash Dis.	1	1
*	9242-453-009	Hose, Vac. Brkr. to Rinse Dis.	1	1
*	8654-040-000	Clamp, Hose-Spring	10	10
*	8654-117-002	Clamp, Hose-Worm	2	2
5	5198-211-004	Circuit Breaker	1	1
6	8640-359-001	Nut, Speed-grip	2	2
7	9029-051-001	Bracket, Lock Nut	2	2



CONTROL PANEL GROUP

Key	Part Number	Description	MODELS	
			W C K 6 A A	W C K 6 A B
1	3310-042-001	Light, Bleach	1	1
2	3310-041-001	Light, Cycle Control	1	1
3	9539-479-001	Switch, Pushbutton (cycle selector)	1	1
	8502-629-001	Label, Switch	1	1
*	8640-412-005	Nut, Switch Mtg.	2	2
4	9021-003-001	Acceptor, Coin	1	1
*	9545-020-002	Screw, Acceptor Mtg.	4	4
*	8640-424-002	Nut	4	4
*	9539-466-004	Switch, Coin	1	1
5	9029-040-002	Bracket, Solenoid	1	1
6	9536-074-001	Solenoid	1	1
*	9545-008-001	Screw	4	4
*	8640-413-002	Nut	4	4
*	9497-225-001	Rod, Pull	1	1
7	9020-004-001	Accumulator, Coin	1	1
*	9538-157-003	Spacer	3	3
*	8640-412-005	Nut, Hx	6	6
*	9550-171-001	Shield, Circuit Board	1	1
8	9242-450-001	Hose, Dispenser to Tub	1	1
*	8654-117-008	Clamp	2	2



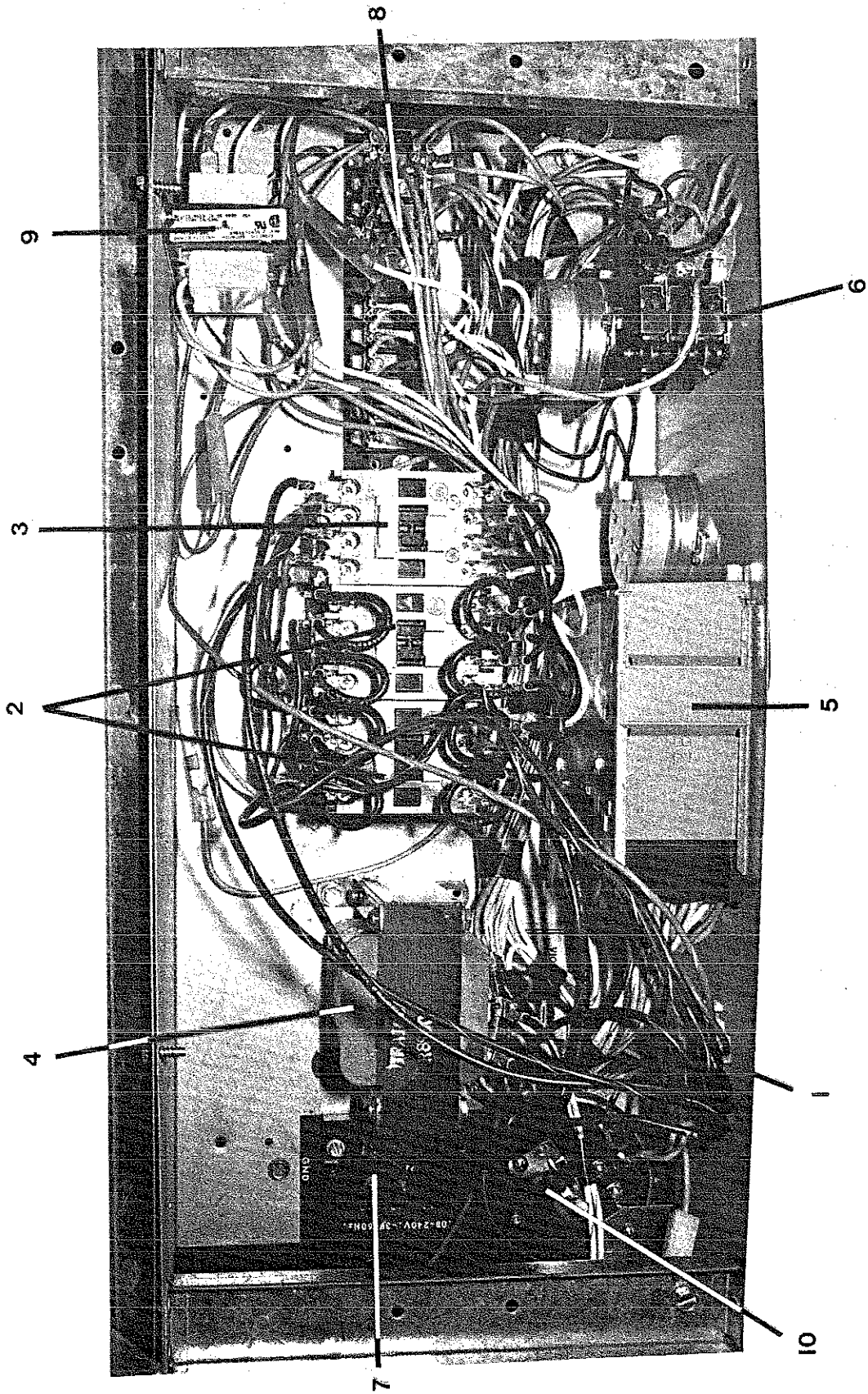
ELECTRICAL COMPONENTS TOP COMPARTMENT

1 PHASE

MODEL

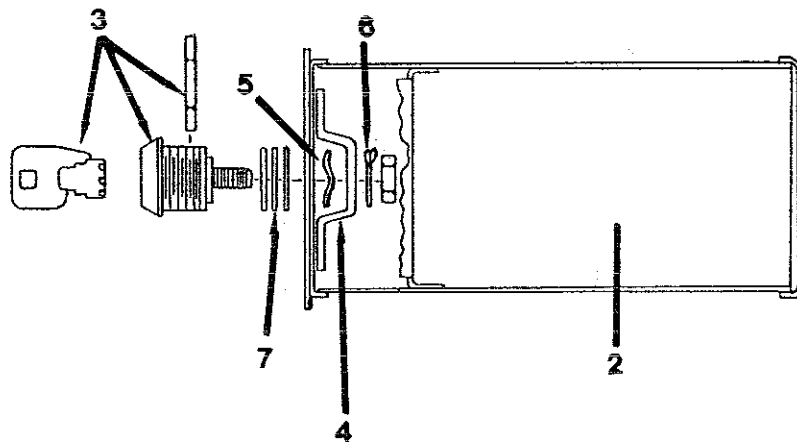
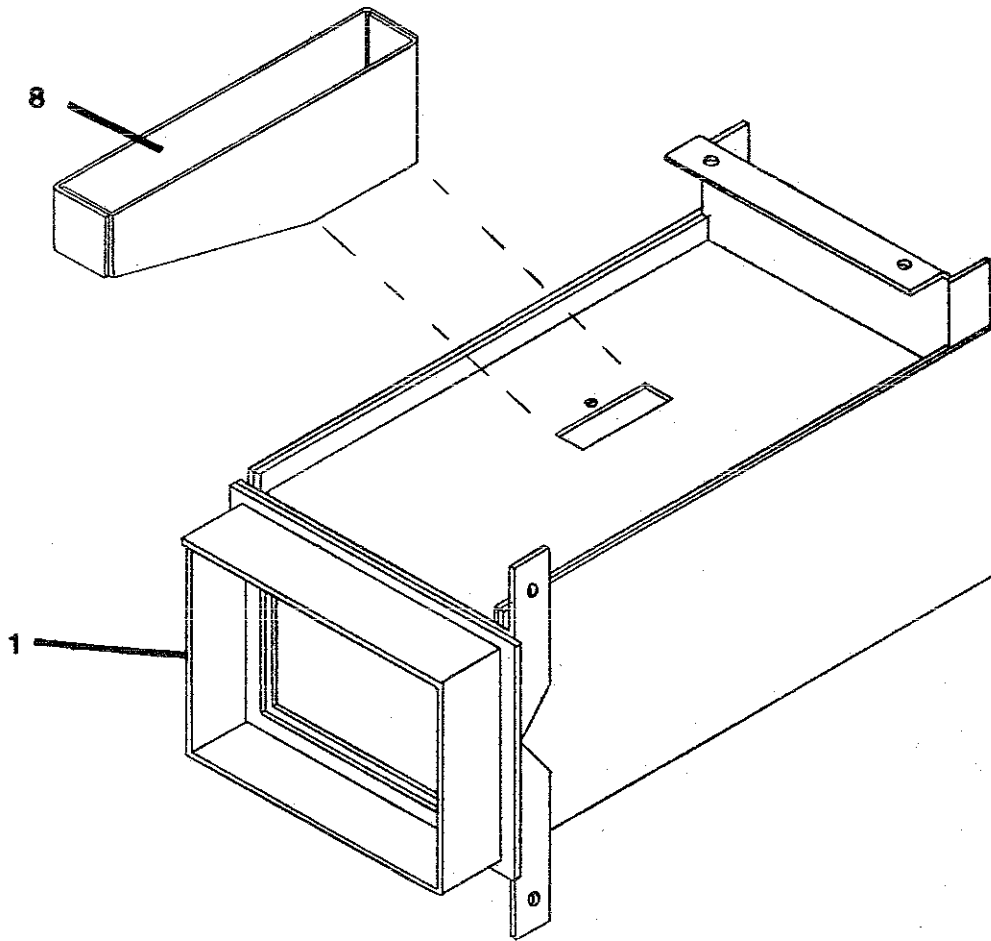
W
C
K
6
A
A

Key	Part Number	Description	Quantity
1	9839-012-001	Trough Assy, Controls Mtg	1
*	9029-050-001	Bracket, Trough to Rear Channel	1
*	9545-008-005	Screw	4
2	5191-102-006	Capacitor, Spin-Start (Century)	1
*	9483-002-001	Resistor, Bleed-off	1
3	5191-103-009	Capacitor, Run-Tumble (Century)	1
4	9544-054-001	Strap, Capacitor Mtg (Century)	1
*	9545-045-001	Screw, Capacitor Strap	2
5	5192-286-001	Relay, Tumble	2
6	5192-286-002	Relay, Spin	1
*	8652-132-001	Terminal, Relay Contacts	
*	8652-132-003	Terminal, Relay Coil	
7	9571-359-002	Timer, Program-After S/N 300113	1
7	9571-359-001	Timer, Program-Before S/N 300113	1
(VERIFY PART NUMBER ON TIMER BODY)			
*	9376-285-002	Motor, Timer Main Drive	1
*	9376-286-002	Motor, Timer Rapid Advance	1
*	9545-012-001	Screw, Timer	2
8	9107-066-002	Dial, Timer	1
9	9307-176-001	Knob, Timer (w/set screws)	1
10	9571-360-001	Timer, Reversing	1
*	9545-044-004	Screw, Reversing Timer	2
11	9897-028-001	Terminal Block, Power Connection	1
12	9897-029-001	Terminal Block Assy, 12 Lug	1
13	8711-003-001	Transformer, (For Accumulator)	1
14	9539-457-001	Switch, Pressure	1
*	9488-008-002	Rail, Relay Mtg.	1
*	5198-211-004	Circuit Breaker, 1.5 amp	1
*	8652-130-037	Lug, Grounding	4
15	9539-478-001	Solid State Start Switch	1



**ELECTRICAL COMPONENTS TOP COMPARTMENT
3 PHASE**

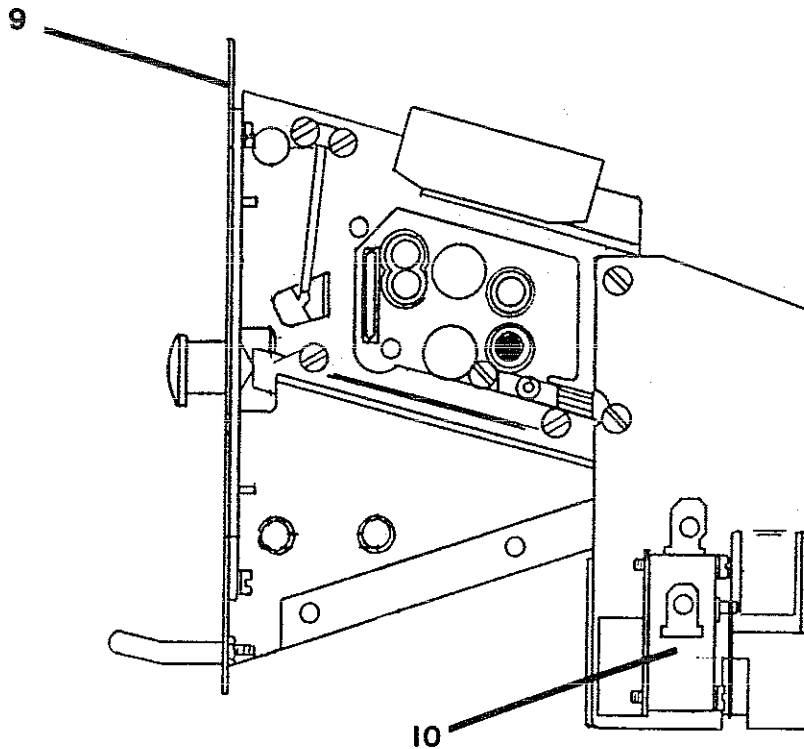
			MODEL
Key	Part Number	Description	W C K 6 A B
1	9839-012-001	Trough Assy, Controls Mtg	1
*	9029-050-001	Bracket, Trough to Rear Channel	1
*	9545-008-005	Screw	4
2	5192-286-001	Relay, Tumble	2
3	5192-286-003	Relay, Spin	1
4	8711-004-001	Transformer, Control	1
5	9571-359-002	Timer, Program-After S/N 300113	1
5	9571-359-001	Timer, Program-Before S/N 300113	1
(VERIFY PART NUMBER ON TIMER BODY)			
*	9376-285-002	Motor, Timer Main Drive	1
*	9376-286-002	Motor, Timer Rapid Advance	1
*	9545-012-001	Screw, Timer	2
*	9107-066-002	Dial, Timer	1
*	9307-176-001	Knob, Timer (w/set screws)	1
6	9571-360-001	Timer, Reversing	1
*	9545-044-004	Screw, Reversing Timer	2
7	9897-028-001	Terminal Block, Power Connection	1
8	9897-029-001	Terminal Block Assy, 12 Lug	1
9	8711-003-001	Transformer, (For Accumulator)	1
10	9539-457-001	Switch, Pressure	1
*	9488-008-002	Rail, Relay Mtg.	1
*	5198-211-004	Circuit Breaker, 1.5 amp	1
*	8652-130-037	Lug, Grounding	4



COIN HANDLING GROUP

COIN HANDLING GROUP

Key	Part Number	Description	MODELS	
			W C K 6 A A	W C K 6 A B
1	9942-026-002	Vault, Assy	1	1
*	9545-008-005	Screw, Vault Mtg	4	4
2	9807-077-007	Box Assy., Coin	1	1
3	8650-012-002	Lock, Coin Box (w/key)	1	1
4	9349-033-001	Latch, Coin Box	1	1
5	8641-569-002	Washer, Wave	1	1
6	8641-583-001	Washer, Keeper	1	1
7	8641-581-008	Washer, Spacer — Thick		
7	8641-581-010	Washer, Spacer — Thin		
8	9940-014-004	Chute Assy., Coin	1	1
*	9545-045-001	Screw, Chute Mtg	1	1
9	9021-003-001	Acceptor, Coin	1	1
*	9545-020-002	Screw, Acceptor Mtg	4	4
*	8640-424-002	Nut	4	4
10	9539-466-004	Switch, Coin	1	1

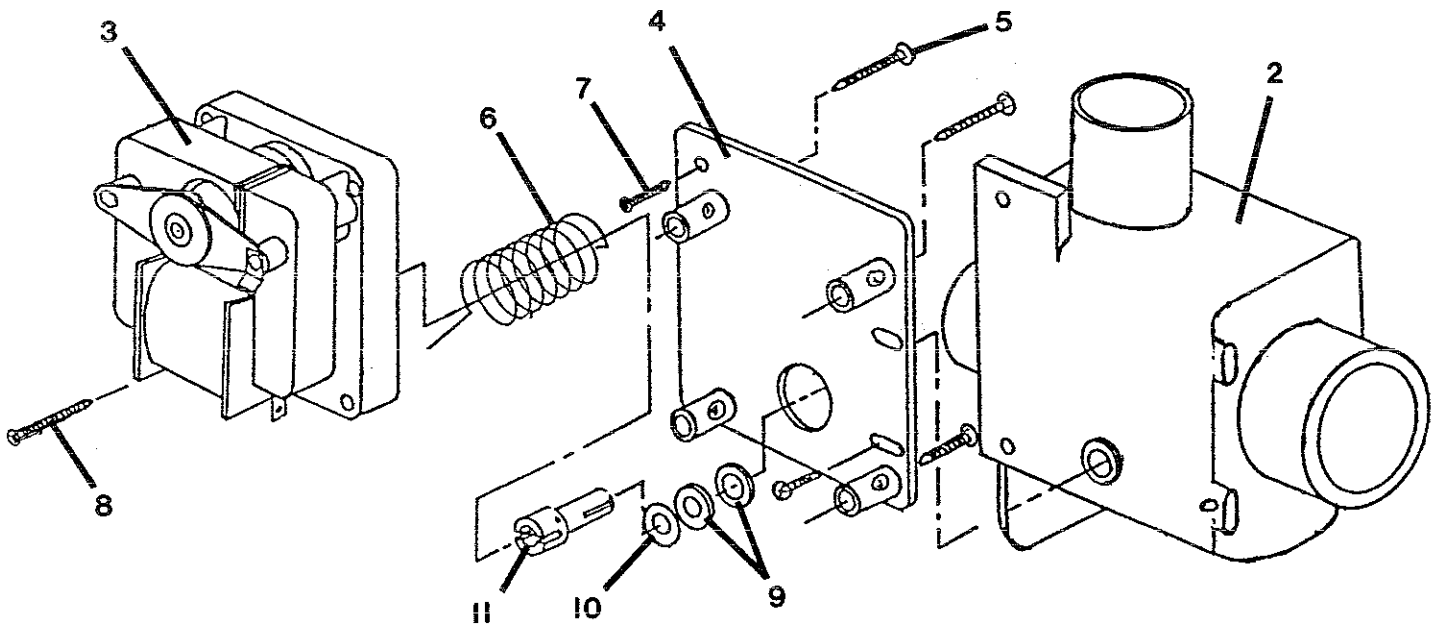


GRAVITY DRAIN VALVE GROUP

MODELS

W C
K K
6 6
A A
A B

Key	Part Number	Description	W C K 6 A A	W C K 6 A B
1	9379-187-001	Valve, Drain	1	1
2	9064-070-001	Body, Valve (w/ball)	1	1
3	9914-137-001	Motor & Gear Train	1	1
4	9452-538-001	Plate, Motor Mtg	1	1
5	8639-994-001	Screw	3	3
6	9534-339-001	Spring, Drive	1	1
7	9545-054-001	Screw	2	2
8	9545-054-002	Screw	1	1
9	9532-134-001	Seal, V Packer	2	2
10	8641-584-001	Washer	1	1
11	9451-196-001	Pin, Main Drive	1	1



WIRING HARNESS GROUP

		MODELS	
		W C K 6 A A	W C K 6 A B
Part Number	Description		
USE FOLLOWING TWO ITEMS WITH TIMER PART NUMBER 9571-359-001			
9627-680-001	Wiring Harness, Main	1	1
9627-681-001	Wiring Harness, Control	1	1
USE FOLLOWING TWO ITEMS WITH TIMER PART NUMBER 9571-359-002			
9627-680-002	Wiring Harness, Main	1	1
9627-681-002	Wiring Harness, Control	1	1
9627-682-001	Wiring Harness, Coin accumulator	1	1
9627-683-001	Wiring Harness, Drain Valve	1	1
* 8654-125-001	Clamp, Cable — 1/4 Dia	1	1
* 8654-125-003	Clamp, Cable — 7/16 Dia	3	3
* 8654-125-004	Clamp, Cable — 3/4 Dia	1	1

MAINTENANCE HINTS

DAILY

- Clean the top and the cabinet to remove residue.
- Clean the soap dispenser and soap lid.
- Check the drain for leaking and proper draining.
- Check the loading door for leaks. Clean the door seal of all foreign material.
- Leave the loading door open to aerate the washer when not in use.

QUARTERLY

- Make sure the power is disconnected before making the following checks.
- Check the drive belt for wear and proper tension.
- Clean lint and other foreign material from around drive motor.
- Check all water connections for leaks.
- Wipe and clean the inside of the washer and check all electrical components for moisture and dust.
- Remove and clean water inlet hose filters. Replace if necessary.
- After any service always replace all panels before reconnecting electrical power.

WARNING

WARNING — THIS WASHER IS EQUIPPED WITH DEVICES AND FEATURES RELATING TO ITS SAFE OPERATION. TO AVOID INJURY OR ELECTRICAL SHOCK, DO NOT PREFORM ANY SERVICING, UNLESS QUALIFIED TO DO SO.

A machine should not be allowed to operate if any of the following occur:

- Excessively high water level.
- Machine is not connected to a properly grounded circuit.
- Loading door does not remain securely locked during the entire cycle.
- Vibration or shaking from an inadequate mounting or foundation.

WARNING - FOR SAFETY

1. Always shut off power and water supply and also discharge capacitors before servicing.
2. Do not overload the washer.
3. Do not open door if cylinder is in motion or contains water.
4. Do not mechanically force or override door lock in any way.
5. Do not bypass any safety devices of this washer.
6. Do not use volatile or flammable substances in or near this washer.
7. Keep all panels in place. They protect against shock and injury and add rigidity to the washer.

