

GIRBAU, S.A.

STI-30/STI-34 Parts Manual Phase 7

Girbau, SA
Carretera Manlleu, KM1
Vic, Barcelona, Spain 08500
Telephone: 34 93 886 1100 / Fax: 34 93 886 0785

e-mail: girbau@girbau.es

Retain This Manual In A Safe Place For Future Reference

This product embodies advanced concepts in engineering, design, and safety. If this product is properly maintained, it will provide many years of safe, efficient, and trouble free operation.

ONLY qualified technicians should service this equipment.

OBSERVE ALL SAFETY PRECAUTIONS displayed on the equipment or specified in the installation manual included with the dryer.

The following “**FOR YOUR SAFETY**” caution **must be** posted near the dryer in a prominent location.

FOR YOUR SAFETY

Do not store or use gasoline or other flammable vapors and liquids in the vicinity of this or any other appliance.

POUR VOTRE SÉCURITÉ

Ne pas entreposer ni utiliser d'essence ni d'autres vapeurs ou liquides inflammables à proximité de cet appareil ou de tout autre appareil.

We have tried to make this manual as complete as possible and hope you will find it useful. The manufacturer reserves the right to make changes from time to time, without notice or obligation, in prices, specifications, colors, and material, and to change or discontinue models.

Important

For your convenience, log the following information:

DATE OF PURCHASE _____ MODEL NO. **STI-30/STI-34 PH7**

DISTRIBUTOR'S NAME _____

Serial Number(s) _____

Replacement parts can be obtained from your distributor or **Girbau, S.A.**® When ordering replacement parts from the factory, you can FAX your order to **Girbau, S.A.**® at 011-3493-886-0785 or telephone your order directly to the **Girbau, S.A.**® Parts Department at 011-3493-886-1100. Please specify the dryer **model number** and **serial number** in addition to the **description** and **part number**, so that your order is processed accurately and promptly.

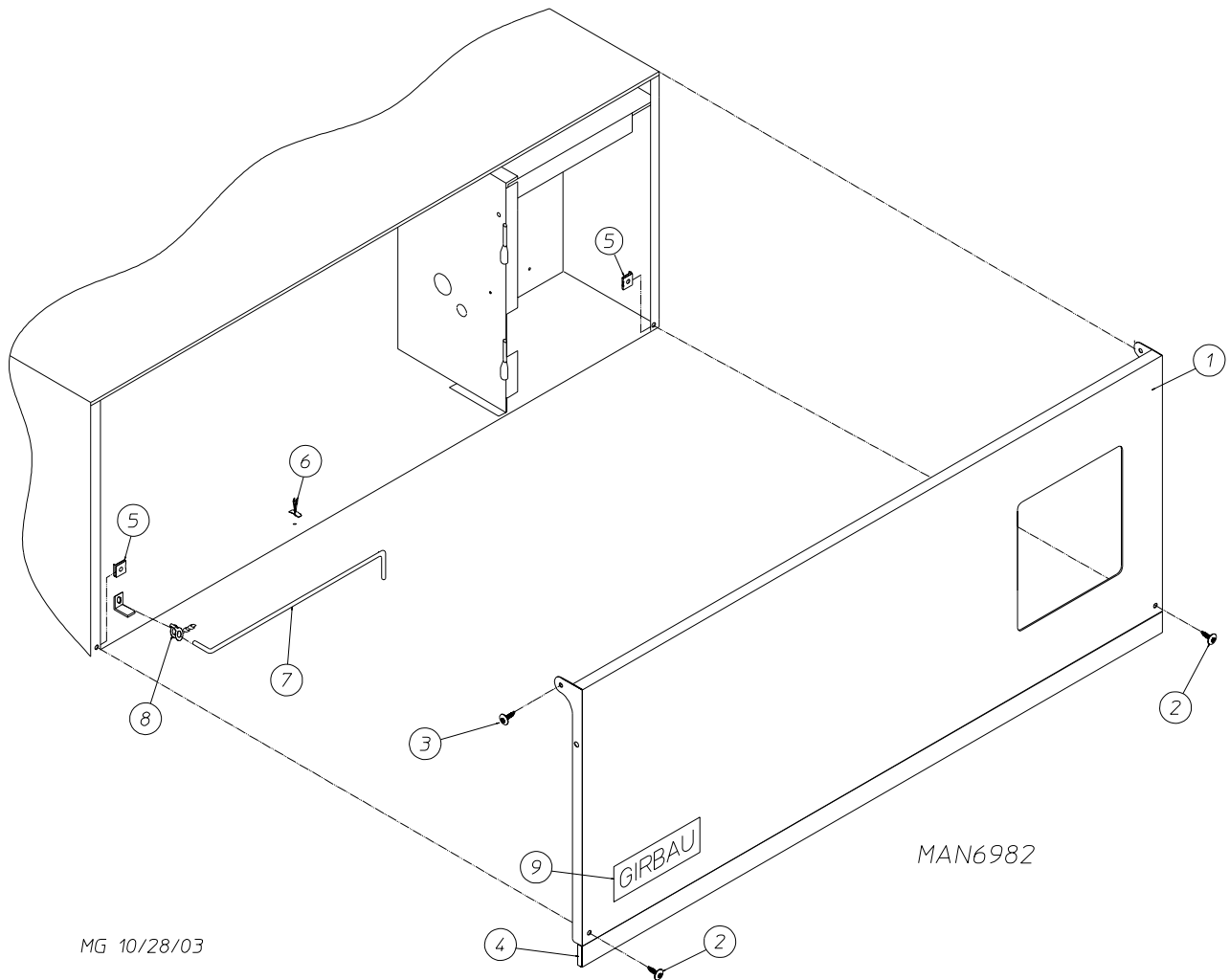
The illustrations on the following pages may not depict your particular dryer exactly. The illustrations are a composite of the various dryer models. Be sure to check the descriptions of the parts thoroughly before ordering.

“IMPORTANT NOTE TO PURCHASER”

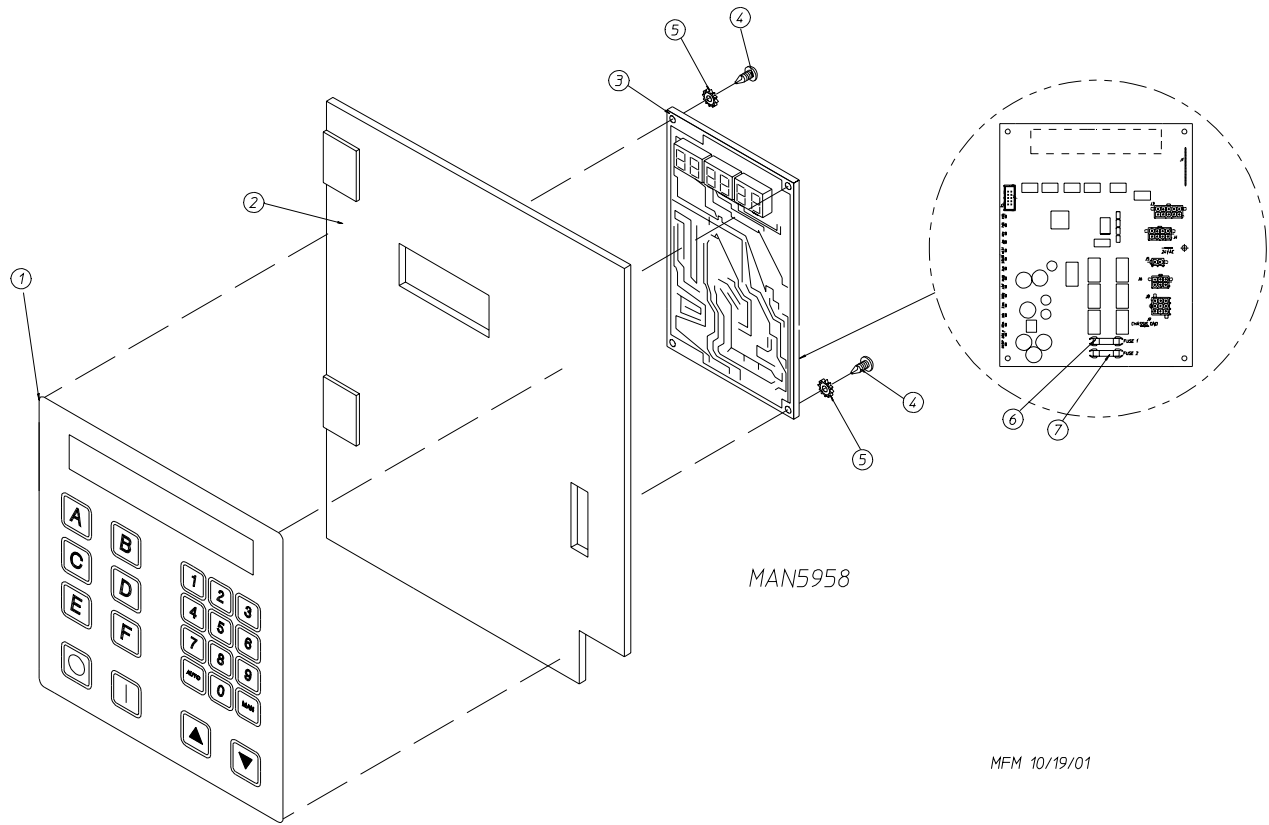
Information **must be** obtained from your local gas supplier on the instructions to be followed if the user smells gas. These instructions **must be** posted in a prominent location near the dryer.

Table of Contents

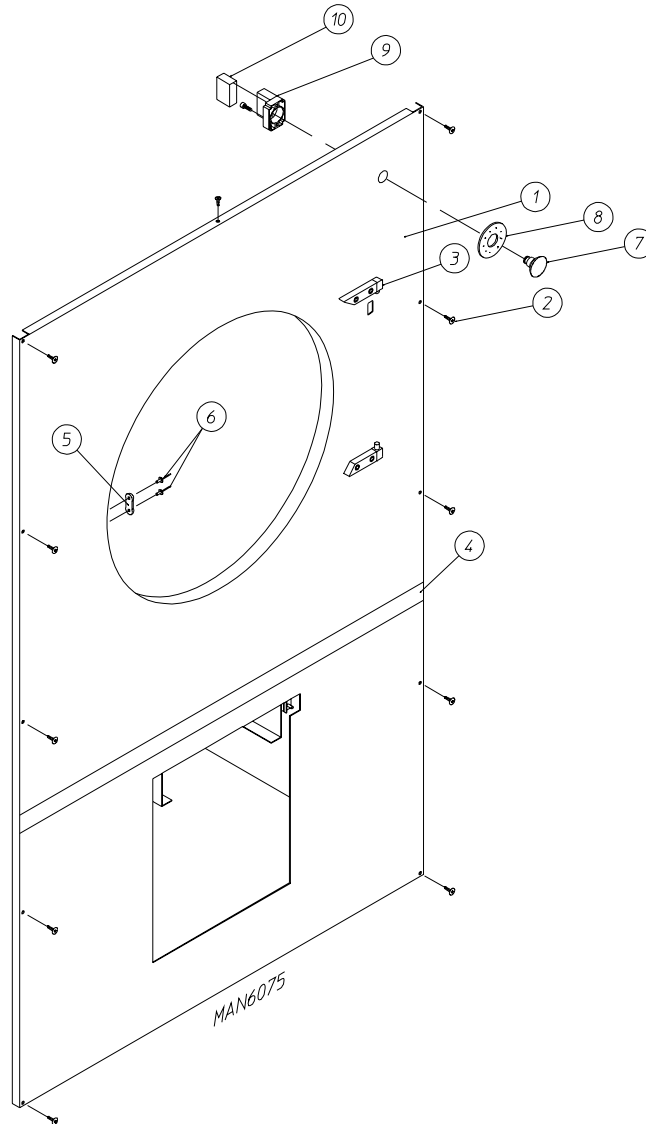
Non-Coin Control Door Assembly	2
Phase 7 Non-Coin Microprocessor Control Panel Assembly	3
Front Panel Assembly	4
Main Door “Steel” Assembly	5
Main Door Switch Assembly	6
Basket (Tumbler)/Support Assemblies	7
Lint Drawer/Lint Drawer Switch Assembly	8
Idler Bearing Assembly	9
Basket (Tumbler) Bearing Assembly	10, 11
Non-Reversing Motor Mount Assembly	12, 13
Reversing T.E.F.C. Motor Mount Assembly	14, 15
Sensor Bracket Assembly	16, 17
Direct Spark Ignition (DSI) Burner Assembly	18, 19
Electric Oven Assembly	20, 21
Air-Operated Steam Damper Assembly	22, 23
Sail Switch Assembly	24
Reversing 3-Phase (3 ϕ) Motor	
Electric Relay Panel Assembly	
Steam 208-240v	25
Reversing/Non-Reversing 3-Phase (3 ϕ) Motor	
Electric Relay Panel Assembly	
Gas and Steam 208-240v	26
Reversing 3-Phase (3 ϕ) Motor	
Electric Relay Panel Assembly	
Electric 380-416v	27
Fire Suppression System (F.S.S.) Piping Assembly	28
Fire Suppression System (F.S.S.) Sensor Probe Assembly	29
Outer Top/Back Guard Assemblies	30
Electrical Oven Component Application Chart	31
Additional Parts Available	32



<u>Illus. No.</u>	<u>Part No.</u>	<u>Qty.</u>	<u>Description</u>
1	884049	1	White Control Door Assembly (includes illus. nos. 1 and 4)
2	150321	2	#10-32 x 1/2" Phillips Button Head Machine Screw
3	150317	2	#10-16 x 3/4" TORX + Screw
	150318	1	25 IP TORX + Bit (for removal of TORX head screw)
4	117604	4	Noise Suppressor Tape (sold by the foot)
5	154011	2	#10-32 Multi-Thread U-Nut
6	102603	1	Control Door Rod Support Catch
7	102503	1	Control Door Support Rod
8	102601	1	Control Door Rod Retainer Clip
9	112371	1	Girbau Logo

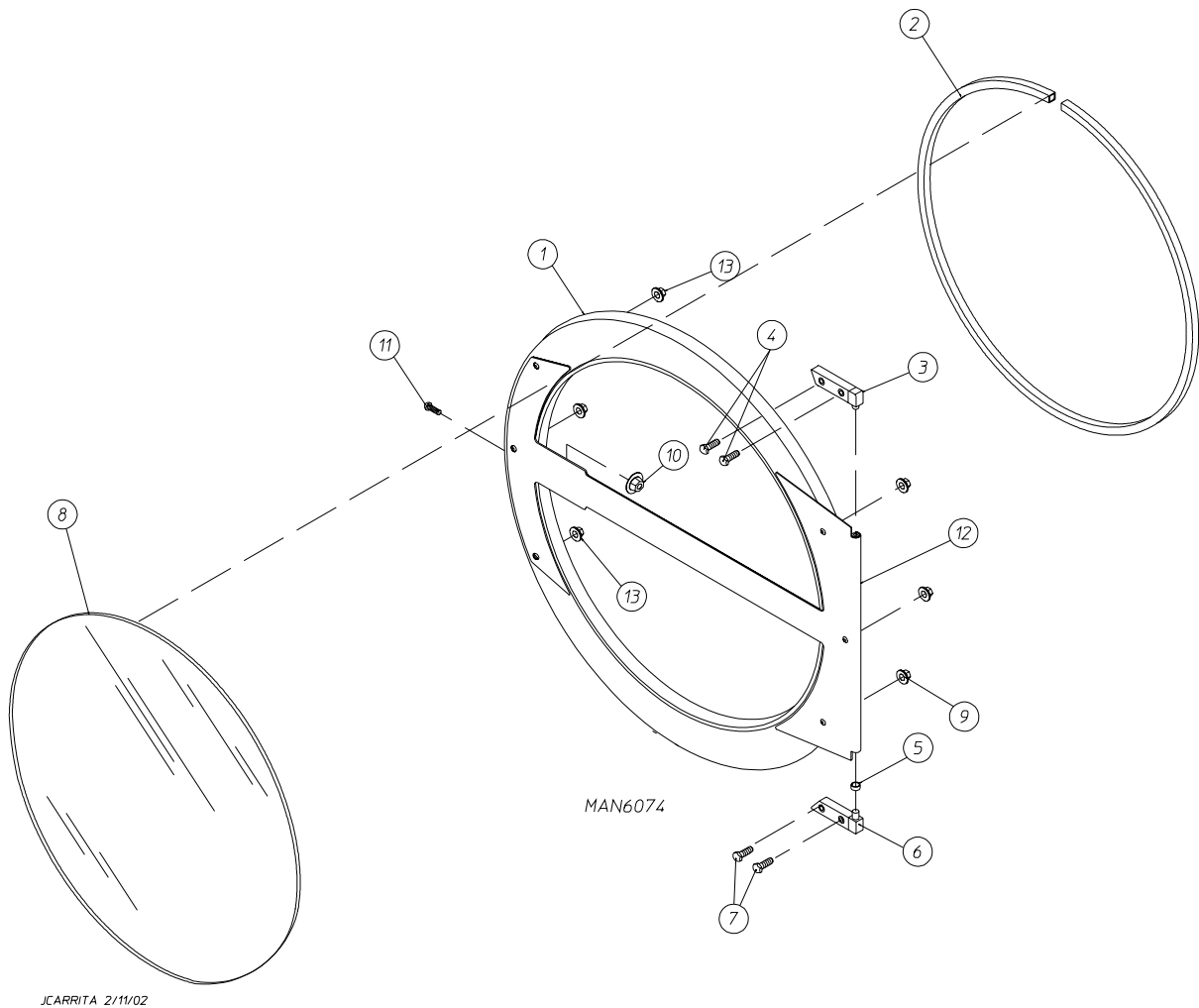


<u>Illus. No.</u>	<u>Part No.</u>	<u>Qty.</u>	<u>Description</u>
1	112571	1	Phase 7 Non-Coin Keyboard
2	850984	1	Phase 7 Non-Coin Microprocessor Controller (computer) Panel ONLY
	883749	1	Phase 7 Non-Coin Reversing Microprocessor Controller (computer) Control Panel Assembly Complete with Fire Suppression System (F.S.S.) (includes illus. nos. 1 through 7)
3	883744	1	Phase 7 Non-Coin Microprocessor Controller (computer) ONLY with Fire Suppression System (F.S.S.)
4	150005	2	#6-32 x 3/4" Phillips Round Head Machine Screw
5	153010	2	#6 Star Washer
6	136016	1	5-amp Fuse
7	136097	1	500-mA Fuse

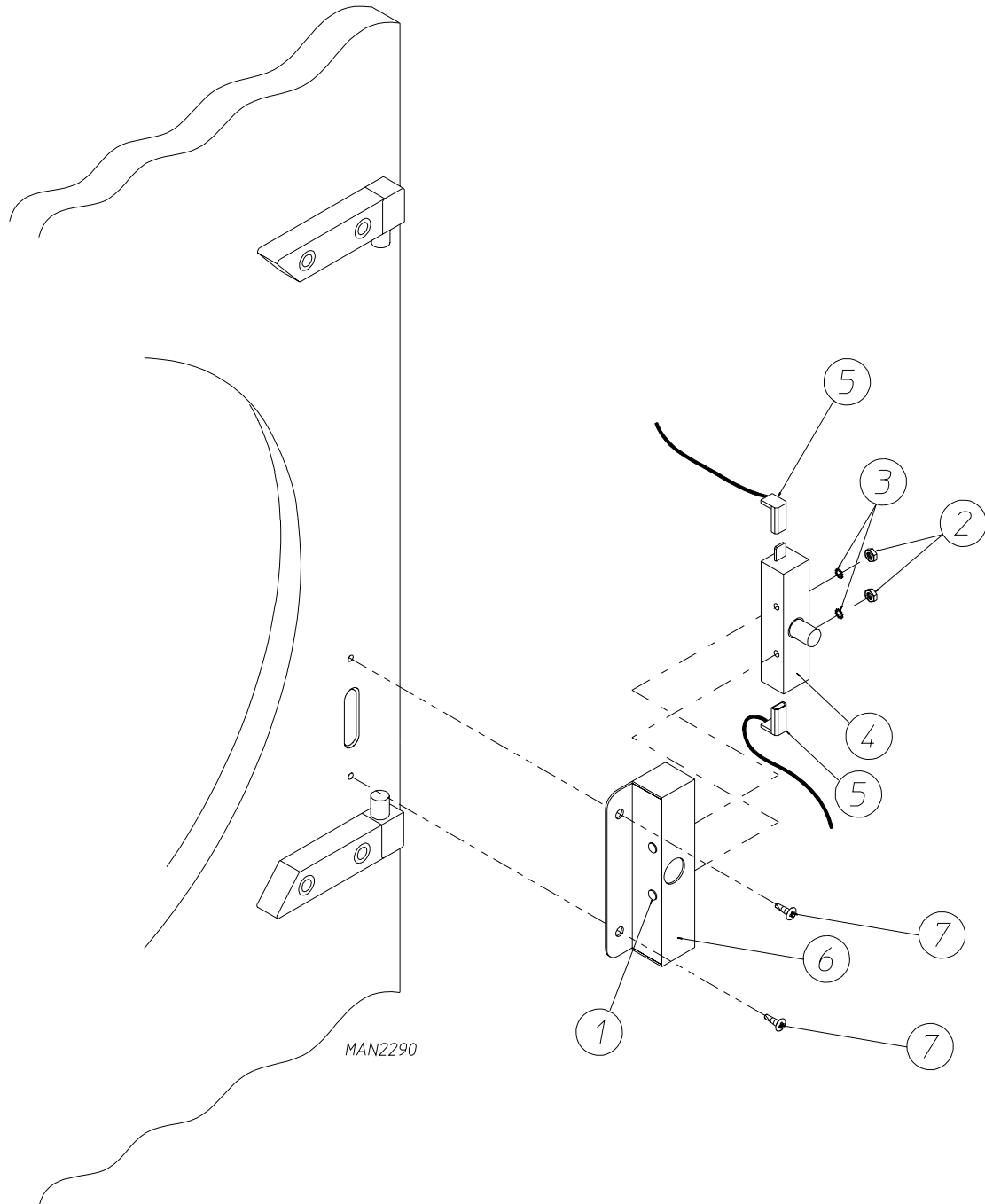


JCARRITA 2/1/02

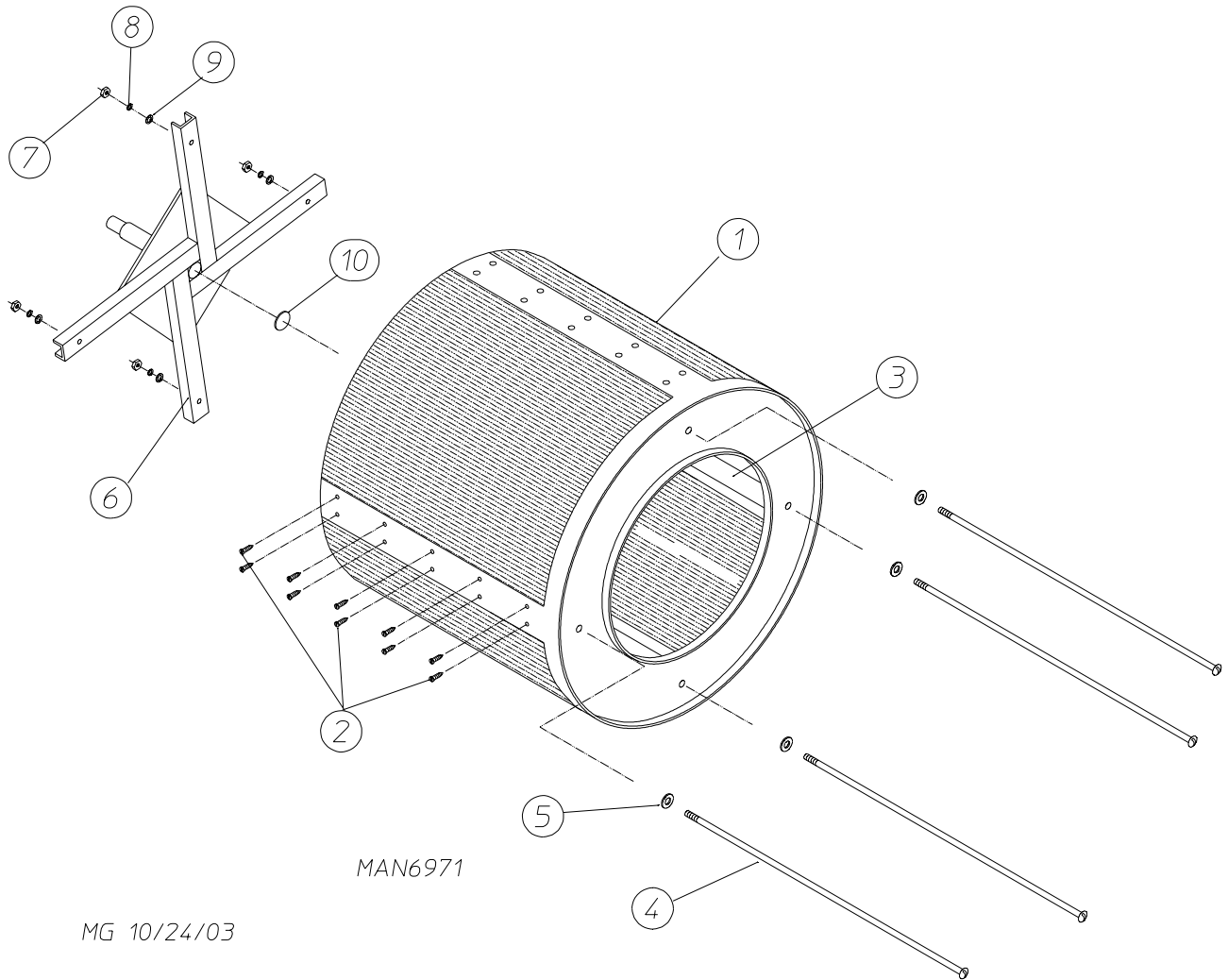
<u>Illus. No.</u>	<u>Part No.</u>	<u>Qty.</u>	<u>Description</u>
1	883280	1	White Front Panel Assembly (for models mfd. with E-Stop button) (includes illus. nos. 1 and 4 through 6)
	882943	1	White Front Panel Assembly (for models mfd. without E-Stop button) (includes illus. nos. 1 and 4 through 6)
2	150313	11	#10-16 x 1/2" TORX + BTN, Type 1
	150318	1	25 IP TORX + Bit (for removal of TORX head screw)
3	-----	1	Main Door Hinge (refer to Main Door "Steel" Assembly on page 5)
4	882969	1	Front Panel Trim Assembly
5	881987	1	Friction Door Latch Assembly (includes illus. nos. 5 and 6)
6	154215	2	5/32" Pop Rivet
7	123500	1	"EMERGENCY STOP" (E-Stop) Push/Pull Button
8	123506	1	"EMERGENCY STOP" (E-Stop) Nameplate
9	123521	1	Normally Closed (NC) Contact Block with Mounting Latch (includes illus. nos. 9 and 10)
10	123517	1	Normally Closed (NC) Contact Block



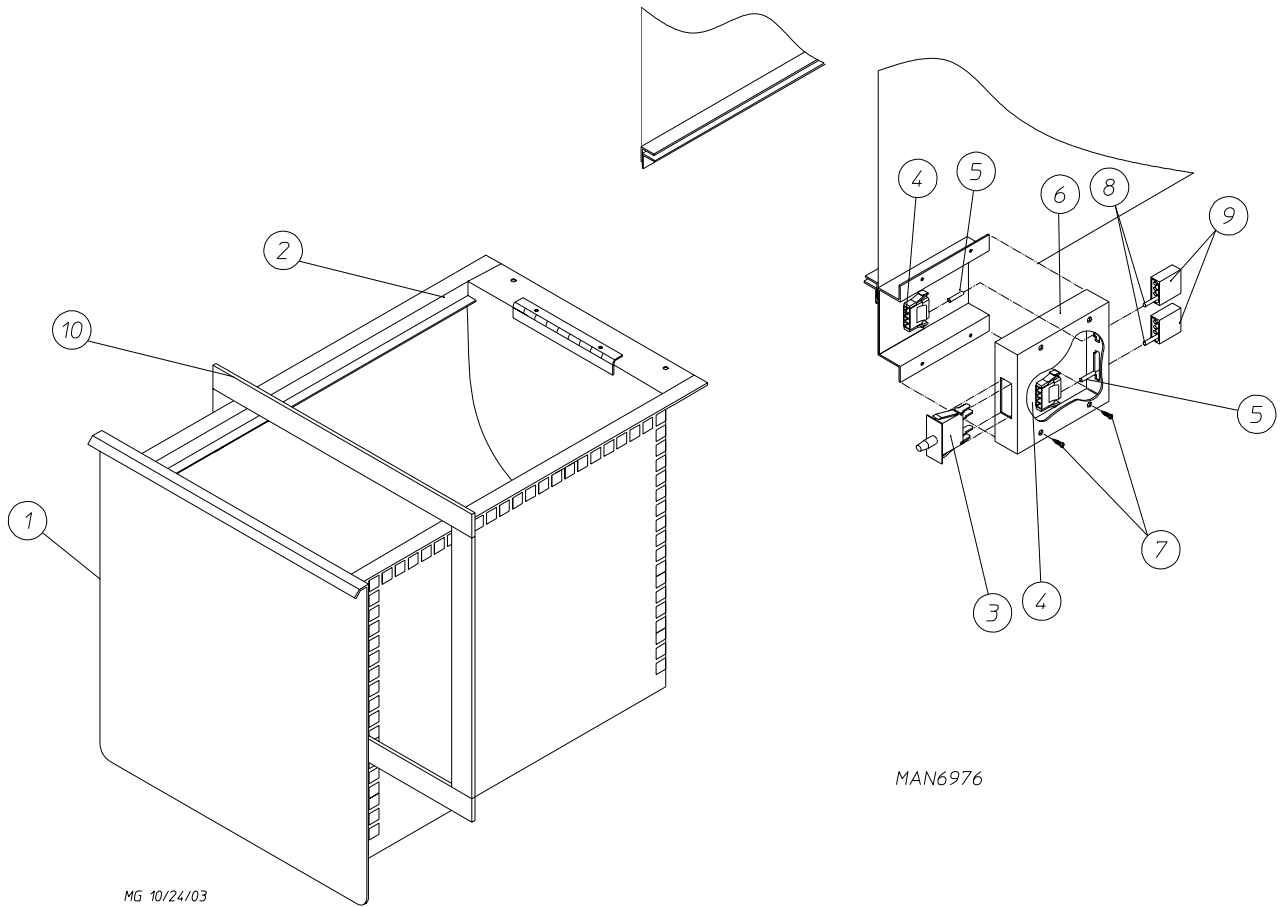
<u>Illus. No.</u>	<u>Part No.</u>	<u>Qty.</u>	<u>Description</u>
1	883274	1	White Main Door Assembly Complete (includes illus. nos. 1, 2, and 8 through 13)
2	102354	1	Door Gasket
	170730	1	Clear Gasket Adhesive (10.3 oz. cartridge)
3	881440	1	White Top Hinge Block Assembly (includes illus. nos. 3 and 4)
4	150445	2	1/4-20 x 3/4" Black Cap Head Setscrew
5	153031	1	1/4" Nylon Washer
6	881441	1	White Bottom Hinge Block Assembly (includes illus. nos. 5 through 7)
7	150445	2	1/4-20 x 3/4" Black Cap Head Setscrew
8	102211	1	20-5/8" Door Glass
	170730	1	Clear Glass Adhesive (10.3 oz. cartridge)
9	881806	3	1/4-20 White Free Spin Wash Nut
10	151009	1	#10-32 Stainless Steel Hex Acorn Nut
11	150120	1	Door Latch Screw
12	883275	1	White Small Cold Rolled Steel (CRS) Door Handle
13	881806	3	1/4-20 White Free Spin Wash Nut



<u>Illus. No.</u>	<u>Part No.</u>	<u>Qty.</u>	<u>Description</u>
1	150006	2	#6-32 x 7/8" Phillips Pan Head Machine Screw
2	152013	2	#6-32 Hex Nut
3	153010	2	#6 Star Washer
4	137005	1	Door Switch
5	122636	2	Flag Terminal
6	881213	1	White Main Door Switch Housing ONLY
	881216	1	White Main Door Switch Housing Complete (includes illus. nos. 1 through 4 and 6)
7	150301	2	#8-18 x 7/16" Phillips Pan Head TEK Screw

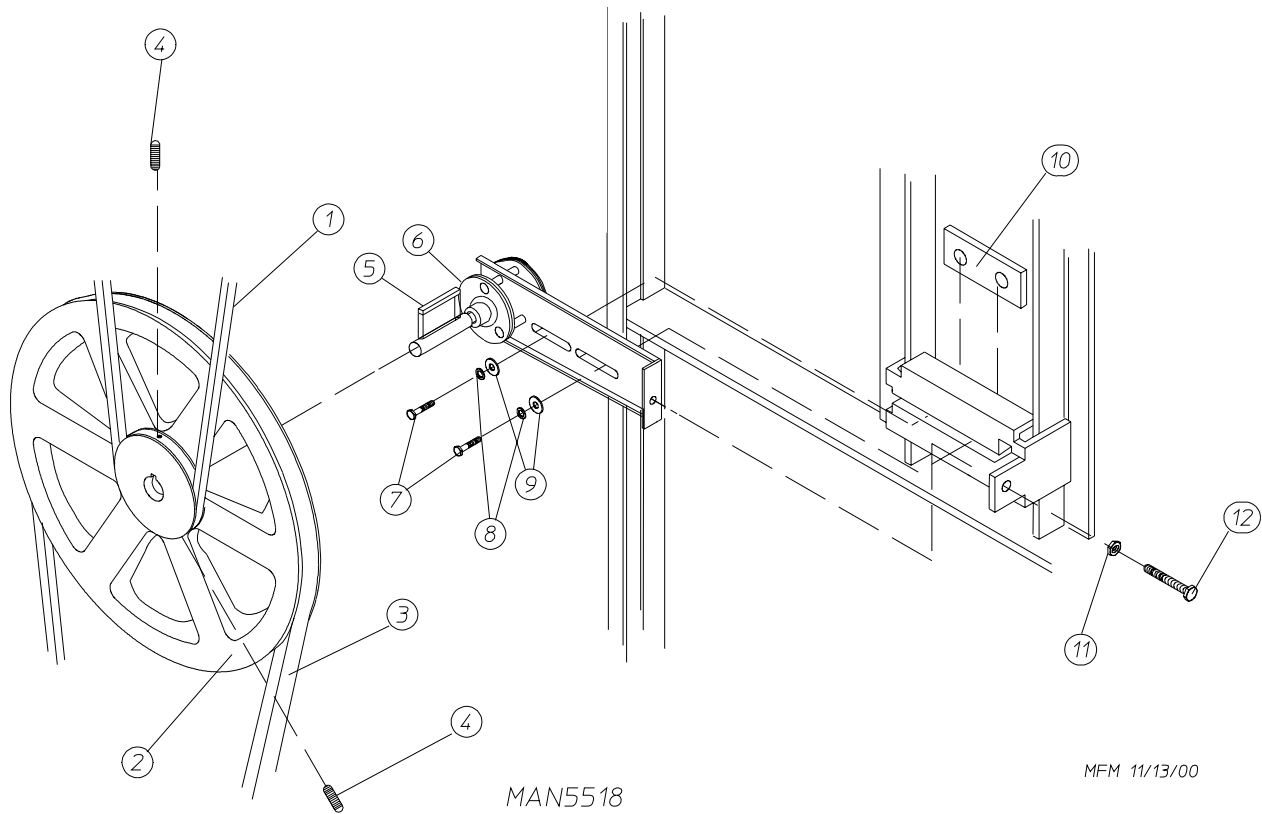


<u>Illus. No.</u>	<u>Part No.</u>	<u>Qty.</u>	<u>Description</u>
1	800734	1	Stainless Steel Basket (tumbler) ONLY without Felt Collar
	800873	1	Stainless Steel Basket (tumbler) and Support Assembly Complete (includes illus. nos. 1 through 10)
2	150313	40	#10-16 x 1/2" TORX + Crimptite Screw
	150429	1	TORX Hand Driver (for removal of TORX head screw)
3	301423	4	Stainless Steel Basket (tumbler) Rib
4	100905	4	3/8-16 x 37" Tie Rod
5	153004	4	3/8" Flat Washer
6	800613	1	Basket (tumbler) Support
7	152005	4	3/8-16 Nylon Insert Lock Nut
8	153005	4	3/8" Lock Washer
9	153004	4	3/8" Flat Washer
---	401010	1	#847 Adhesive for Felt Collar
10	115986	1	1/4" x 2" Felt Basket (tumbler) Pad



Illus. No.	Part No.	Qty.	Description
1	884047	1	White Lint Drawer Assembly (includes illus. nos. 1 and 10)
2	108222	1	Lint Bag
3	122116	1	Lint Drawer Switch
4	122605	1 or 2	4-Position Connector (female)
5	122701	*	Socket Terminal
	122801	1	Pin/Socket Extraction Tool (Not Illustrated)
6	833229	1	Lint Drawer Switch Box Assembly (includes illus. nos. 3 through 7)
	304136	1	Lint Drawer Switch Box ONLY
7	150301	2	#8-18 x 7/16" Phillips Pan Head TEK Screw
8	122700	*	Pin Terminal
9	122604	1 or 2	4-Position Connector (male)
10	117604	7'	1/8" Thick x 3/8" Wide Neoprene Sponge Tape

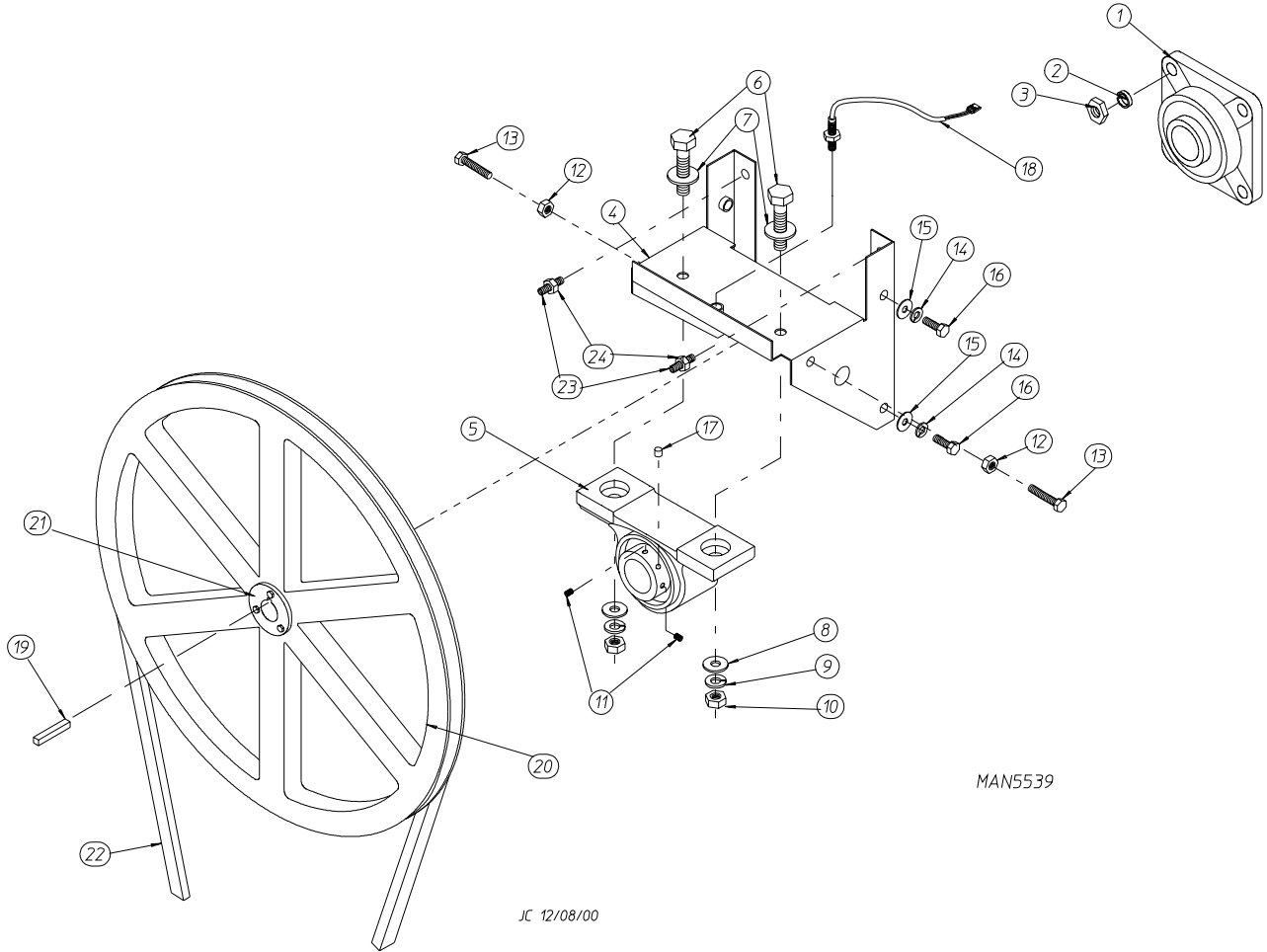
* As required.



MAN5518

MFM 11/13/00

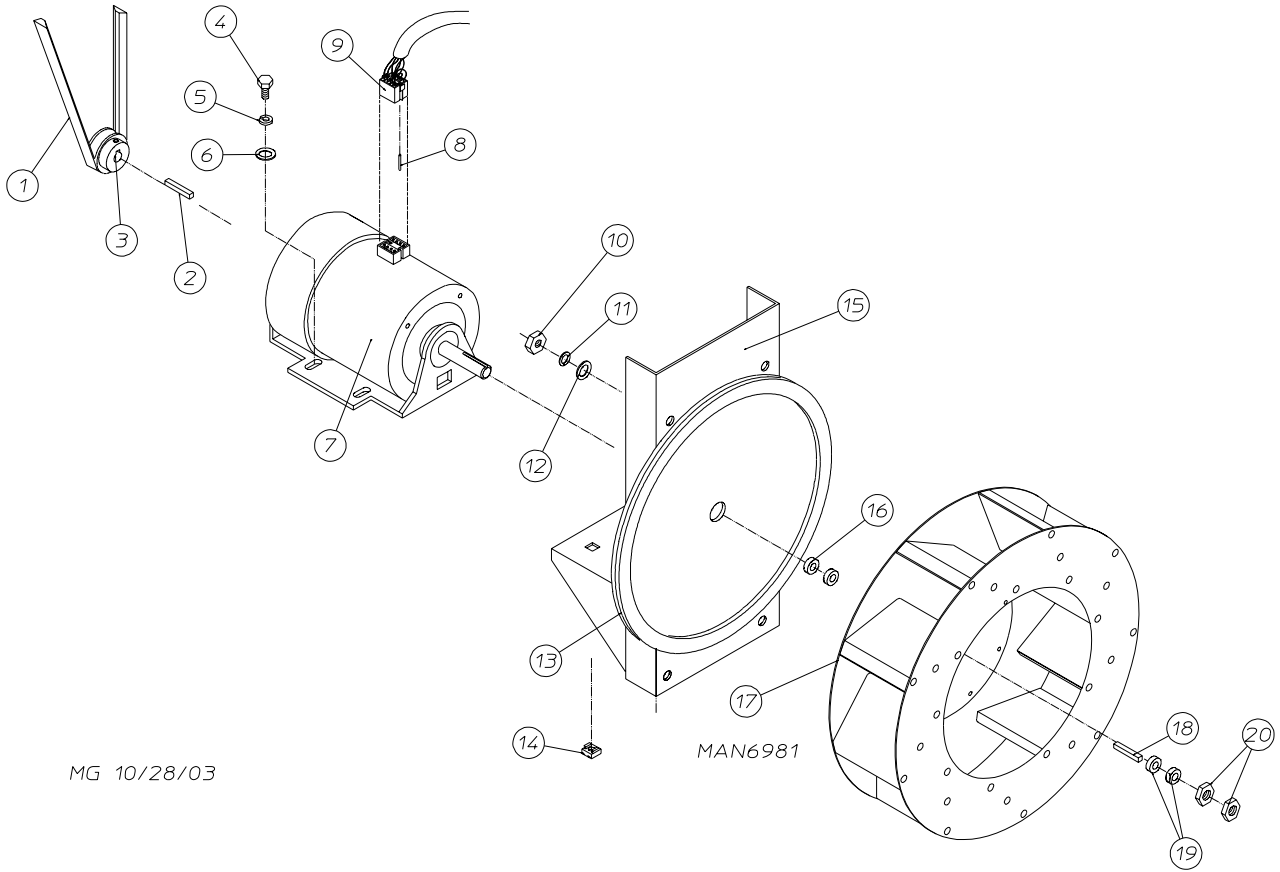
<u>Illus. No.</u>	<u>Part No.</u>	<u>Qty.</u>	<u>Description</u>
1	100108	1	5L-680 V-Belt (basket [tumbler] to idler)
2	101140	1	14" x 3" Compound Pulley
3	100194	1	4L-720 V-Belt (idler to motor)
			For Non-Reversing Models ONLY
	100109	1	4L-650 V-Belt (idler to motor)
			For Reversing Models ONLY
4	154301	2	5/16-18 x 1" Allen Setscrew
5	100705	1	3/16" x 3/16" x 1-3/8" Key
6	882576	1	Idler Bearing Assembly Complete (includes illus. nos. 5 through 12)
7	150617	2	3/8-16 x 1" Hex Head Machine Bolt
8	153005	2	3/8" Lock Washer
9	153004	2	3/8" Flat Washer
10	801009	1	Idler Square Washer
11	152004	1	5/16-18 Hex Nut
12	150509	1	5/16-18 x 3" Hex Head Machine Bolt



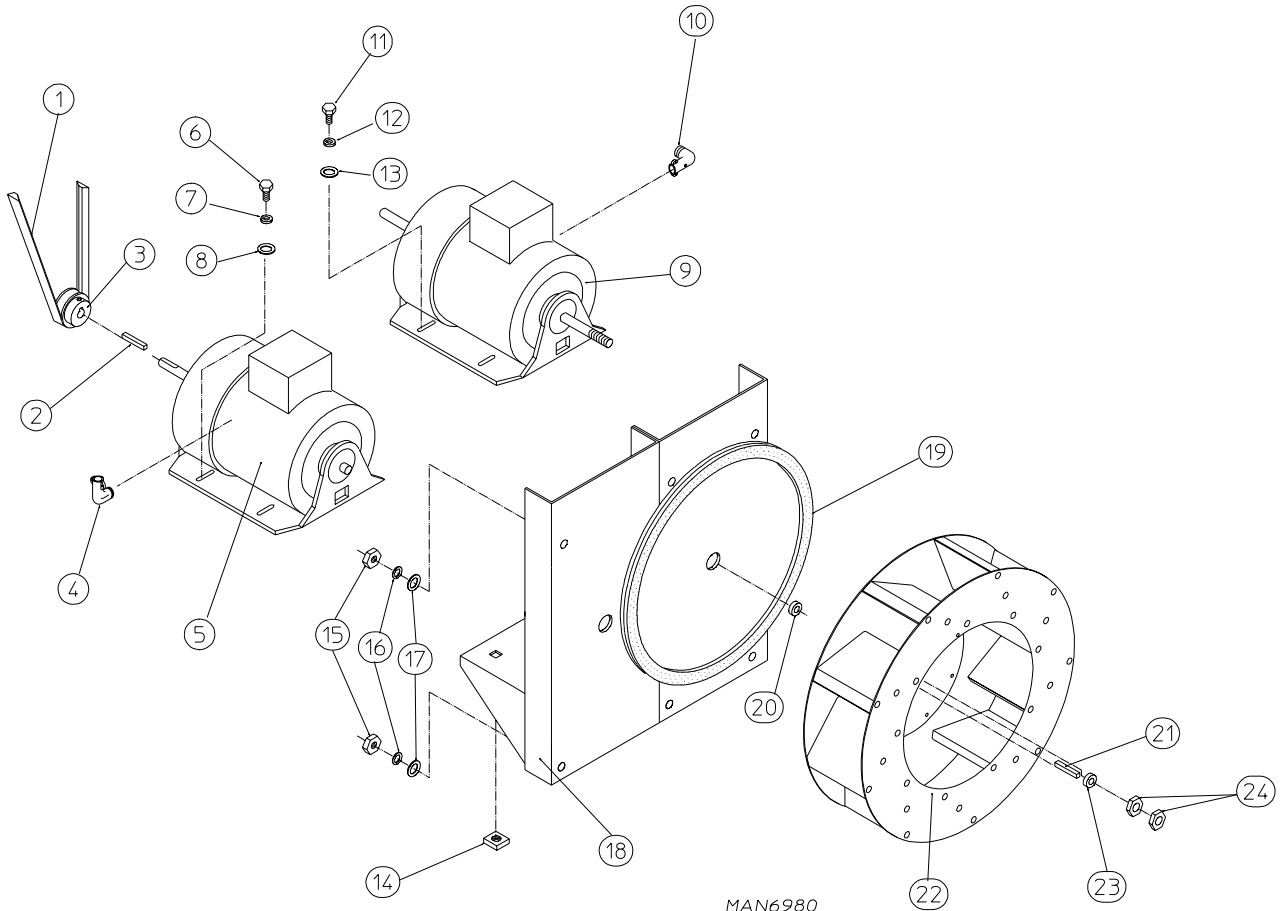
MAN5539

JC 12/08/00

<u>Illus. No.</u>	<u>Part No.</u>	<u>Qty.</u>	<u>Description</u>
1	880220	1	1-3/4" Flange Bearing
2	153025	4	9/16" Lock Washer
3	152050	4	9/16-12 Hex Nut
4	882545	1	Pillow Block Bearing Assembly Complete (includes illus. nos. 4 through 18)
	882543	1	Pillow Block Bearing Platform ONLY
5	880779	1	1-3/8" Pillow Block Bearing
6	150601	2	3/8-16 x 2" Hex Bolt
7	153004	2	3/8" Flat Washer
8	153004	2	3/8" Flat Washer
9	153005	2	3/8" Lock Washer
10	152005	2	3/8-16 Hex Nut
11	154326	2	5/16-24 x 3/8" Setscrew
12	152004	2	5/16-18 Hex Nut
13	150621	2	5/16-18 x 1-1/2" Tap Bolt
14	153002	4	5/16" Lock Washer
15	153004	6	3/8" Flat Washer
16	150501	4	5/16-18 x 3/4" Tap Bolt
17	102120	1	Sintered 8 Magnet
18	822735	1	Rotational Sensor Assembly
19	100724	1	Shaft Key (for non-reversing models Only)
	100735	1	Shaft Key (for reversing models Only)
20	101100	1	18" Pulley (for non-reversing models Only)
	101118	1	18-3/4" Pulley (for reversing models Only)
21	101110	1	1" Taper Lock Bushing (for reversing models Only)
22	100108	1	5L-680 V-Belt (basket [tumbler] to idler)
23	150610	2	5/16-18 x 1-1/2 Allen Setscrew
24	152004	2	5/16-18 Hex Nut



<u>Illus. No.</u>	<u>Part No.</u>	<u>Qty.</u>	<u>Description</u>
1	100194	1	4L-720 V-Belt (idler to motor)
2	100701	1	3/16" x 3/16" x 1" Key
3	101130	1	5/8" x 2-1/2" Motor Pulley (50 Hz Only)
4	150501	4	5/16-18 x 3/4" Tap Bolt
5	153002	4	5/16" Lock Washer
6	153001	4	5/16" Flat Washer
7	100073	1	1 HP 200-240v 1ø 50 Hz
8	122701	8	Socket Terminal ONLY
	122801	1	Pin/Socket Extraction Tool (Not Illustrated)
9	137030	1	8-Pin Housing Connector
10	152004	4	5/16-18 Hex Nut
11	153002	4	5/16" Lock Washer
12	153001	4	5/16" Flat Washer
13	117604	4	Noise Suppressor Tape (sold by the foot)
14	154000	4	5/16-18 Tinnerman Nut
15	803561	1	Non-Reversing Motor Mount ONLY (56Z frame)
	801824	1	1 HP 230v 1ø 50 Hz Non-Reversing Motor Mount Assembly Complete (includes illus. nos. 2 through 7 and 13 through 20)
16	153051	1	3/4" S.A.E. Flat Washer
17	802026	1	16" Riveted Impellor (3/4" Bore)
18	100702	1	3/16" x 3/16" x 1-7/8" Key
19	153050	2	1/2" S.A.E. Flat Washer
20	152006	2	1/2-20 Left Hand Jam Nut



MG 10/28/03

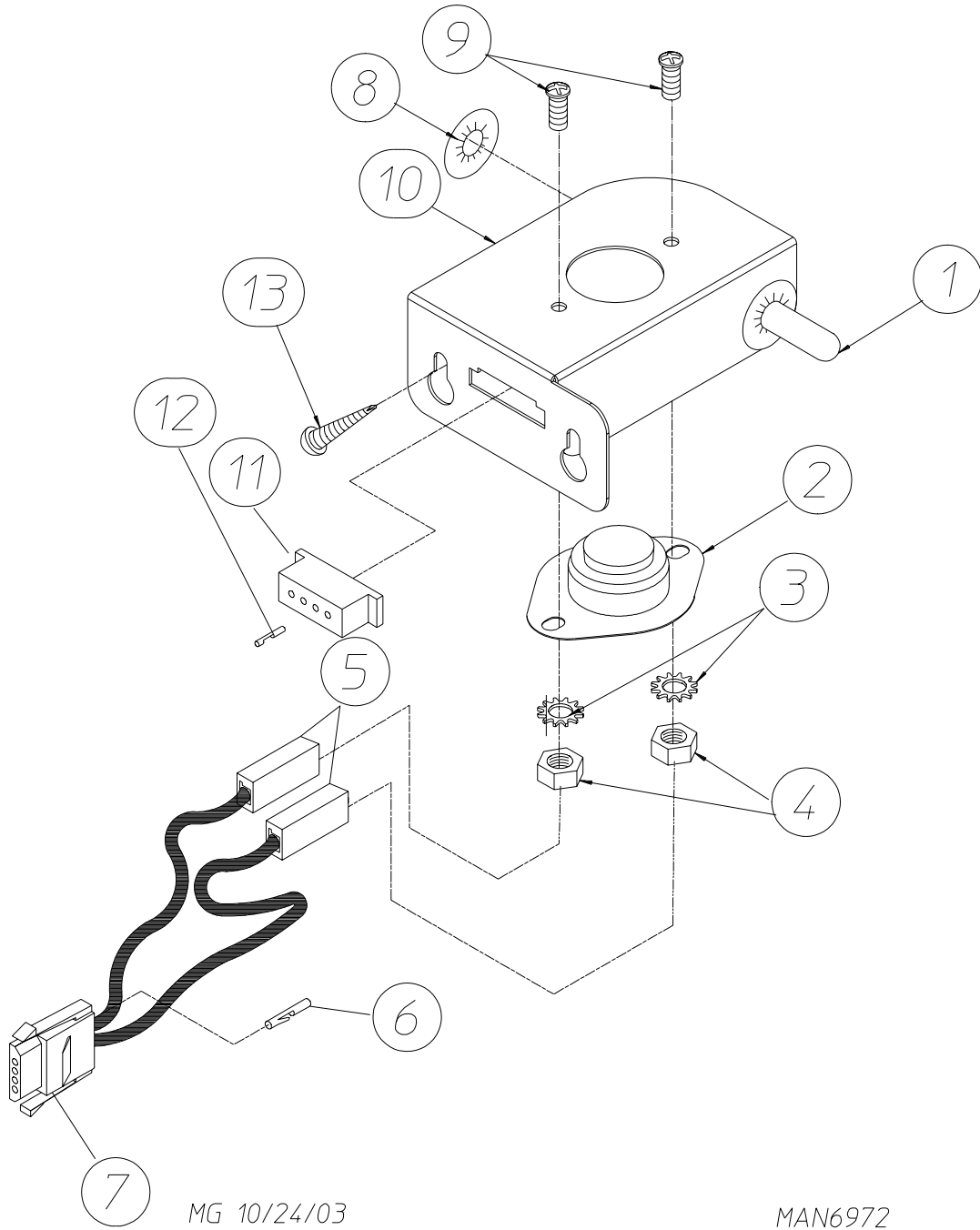
MAN6980

<u>Illus. No.</u>	<u>Part No.</u>	<u>Qty.</u>	<u>Description</u>
1	100109	1	4L-650 V-Belt (to idler assembly)
2	100701	1	3/16" x 3/16" x 1" Key
3	101130	1	5/8" x 2-1/2" Motor Pulley (50 Hz Only)
4	120200	1	3/8" x 90° Connector
5	181003	1	1/2 HP 208/230/380/460v 3ø 50/60 Hz Totally Enclosed, Fan-Cooled (T.E.F.C.) Motor (56Z frame)
6	150501	4	5/16-18 x 3/4" Tap Bolt
7	153002	4	5/16" Lock Washer
8	153001	4	5/16" Flat Washer
9*	100075	1	1 HP Motor 200-230/460v 60 Hz 380-415v 50 Hz
10	120200	1	3/8" x 90° Connector
11	150501	4	5/16-18 x 3/4" Tap Bolt
12	153002	4	5/16" Lock Washer
13	153001	4	5/16" Flat Washer
14	154000	8	5/16-18 Tinnerman Nut
15	152004	7	5/16-18 Hex Nut
16	153002	7	5/16" Lock Washer
17	153001	7	5/16" Flat Washer
18	803555	1	Reversing Motor Mount ONLY
	804030**	1	50 Hz Reversing Totally Enclosed, Fan-Cooled (T.E.F.C.) Motor Mount Assembly Complete (includes illus. nos. 2 through 14 and 18 through 24)
19	117604	4	Noise Suppressor Tape (sold by the foot)
20	153051	1	3/4" S.A.E. Flat Washer
21	100714	1	3/16" x 3/16" x 1-7/8" Key
22	802026	1	16" Riveted Impellor (3/4" bore)
23	153050	***	1/2" S.A.E. Flat Washer
24	152006	2	1/2-20 Left Hand Jam Nut

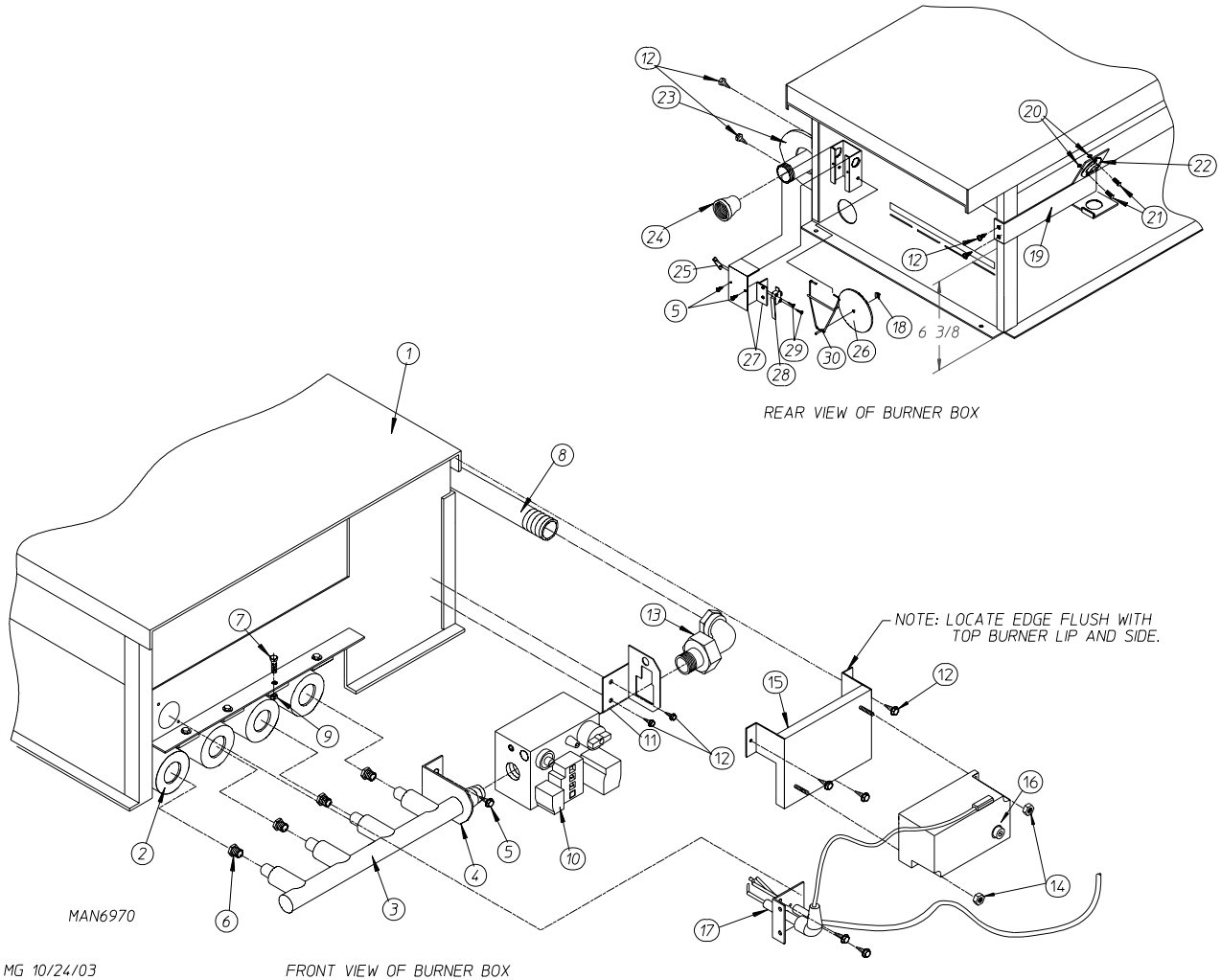
* Check part number on motor data label to verify correct motor.

** Specify voltage when ordering.

*** As required.



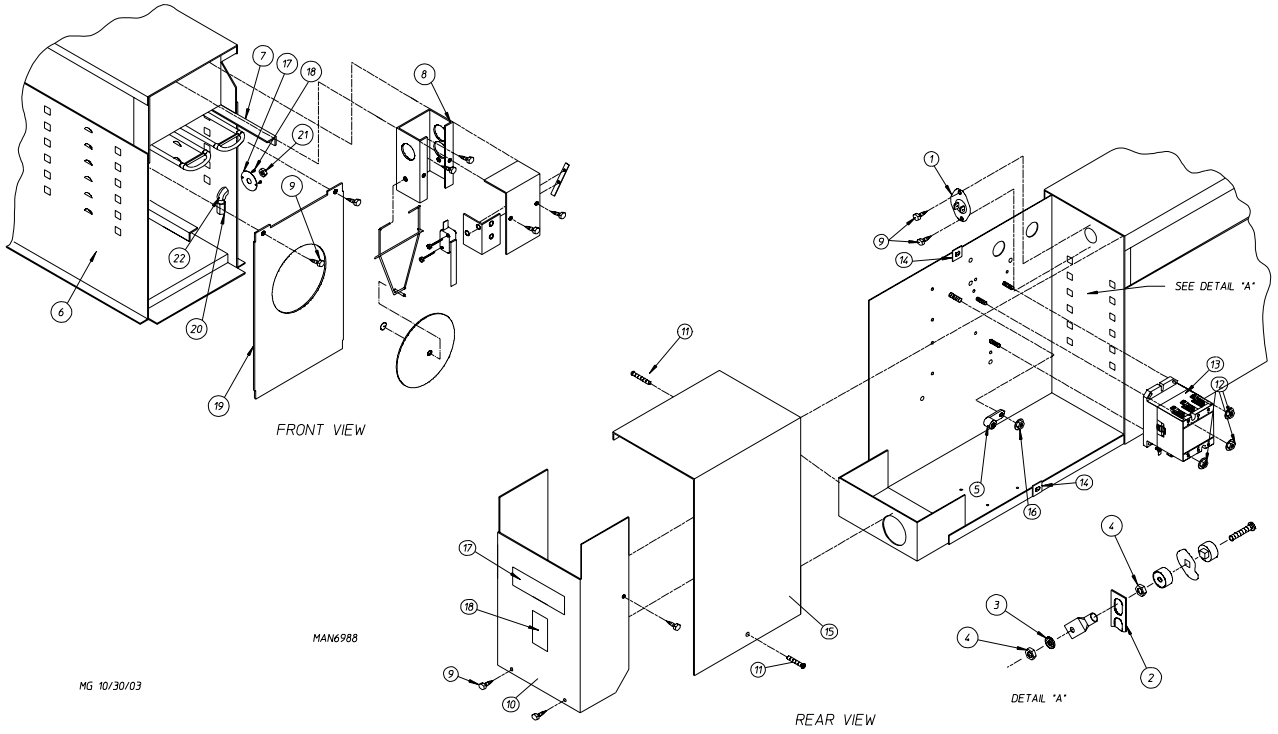
<u>Illus. No.</u>	<u>Part No.</u>	<u>Qty.</u>	<u>Description</u>
1	880251	1	1/4" Temperature Sensor Probe Assembly (includes illus. nos. 1 and 5 through 8)
2	130103	1	225° Hi-Limit Thermostat
3	153010	2	#6 Star Washer
4	152000	2	#6-32 Hex Nut
5	121028	2	Insulated Terminal
6	122701	4	Socket Terminal
7	122605	1	4-Pin Connector (female)
8	154007	2	1/4" Tinnerman Push On Fastener
9	150005	2	#6-32 x 1/4" Phillips Round Head Machine Screw
10	322214	1	Temperature Probe Bracket
11	122604	1	4-Pin Connector (male)
12	122700	4	Pin Terminal
13	150301	2	#8-18 x 7/16" Phillips Pan Head TEK Screw



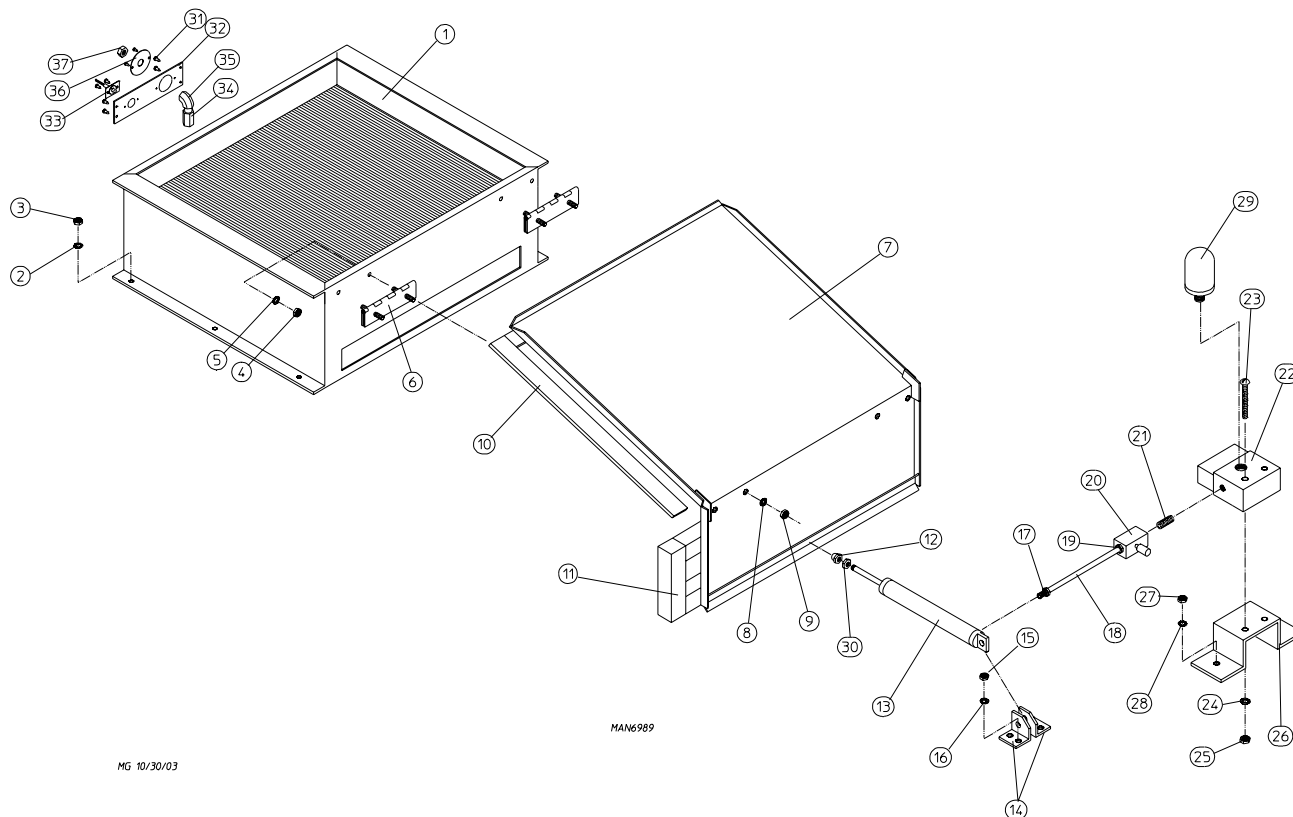
<u>Illus. No.</u>	<u>Part No.</u>	<u>Qty.</u>	<u>Description</u>
1	814832	1	Direct Spark Ignition (DSI) Burner Box ONLY
	809686*	1	Natural Gas Burner Assembly (includes illus. nos. 1 through 5 and 7 through 30)
	817209*	1	Liquid Propane (L.P.) Gas Burner Assembly (includes illus. nos. 1 through 5 and 7 through 30)
	883197**	1	STI-30 Liquid Propane (L.P.) Conversion Kit
2	141105	4	Large Tube Burner
3	141210	1	3/4" Direct Spark Ignition (DSI) Manifold (4-port)
4	323737	1	Pipe Bracket (bent)
5	150300	2	#10-16 x 1/2" Hex Washer TEK Screw
6**	140819	4	#30 Burner Orifice (natural gas)
	140803	4	#49 Burner Orifice (liquid propane [L.P.] gas)
7	150108	4	#8-32 x 1/2" Pan Head Machine Screw
8	142809	1	1/2" x 29-1/8" Pipe
9	151001	4	#8-32 Pal Nut
10	128933	1	1/2" 24 VAC CE Gas Valve (natural gas)
	883255	1	1/2" 24 VAC CE Gas Valve (liquid propane [L.P.] gas)
11	318712	1	Gas Valve Bracket
12	150309	12	#10-16 x 1/2" Hex Head TEK Crimptite Screw
13	141317	1	1/2" Bronze Union Elbow
14	152013	2	#6-32 Hex Nut
15	810031	1	Direct Spark Ignition (DSI) Module Mounting Bracket
16	128941	1	CE Direct Spark Ignition (DSI) Module Three (3) Tries
17	809307	1	Ignitor Probe Assembly
18	154002	1	1/8" Push On Fastener
19	319704	1	Hi-Limit Mounting Bracket
20	152013	2	#6-32 Hex Nut
21	150005	2	#6-32 x 1/4" Round Head Machine Screw
22	130201	1	330° Hi-Limit Manual Reset
23	318700	1	Pipe Bracket (bent)
24	142936	1	3/4" x 1/2" Coupling
25	154004	1	Twin Speed Nut
26	319202	1	Sail Switch Damper (flat)
27	802799	1	Sail Switch Top and Switch Bracket
28	122200	1	Sail Switch
29	150303	2	3/4" Pan Head Machine Screw
30	105500	1	Sail Switch Actuator Rod

* Burner orifices *are not included* and **must be** ordered separately.

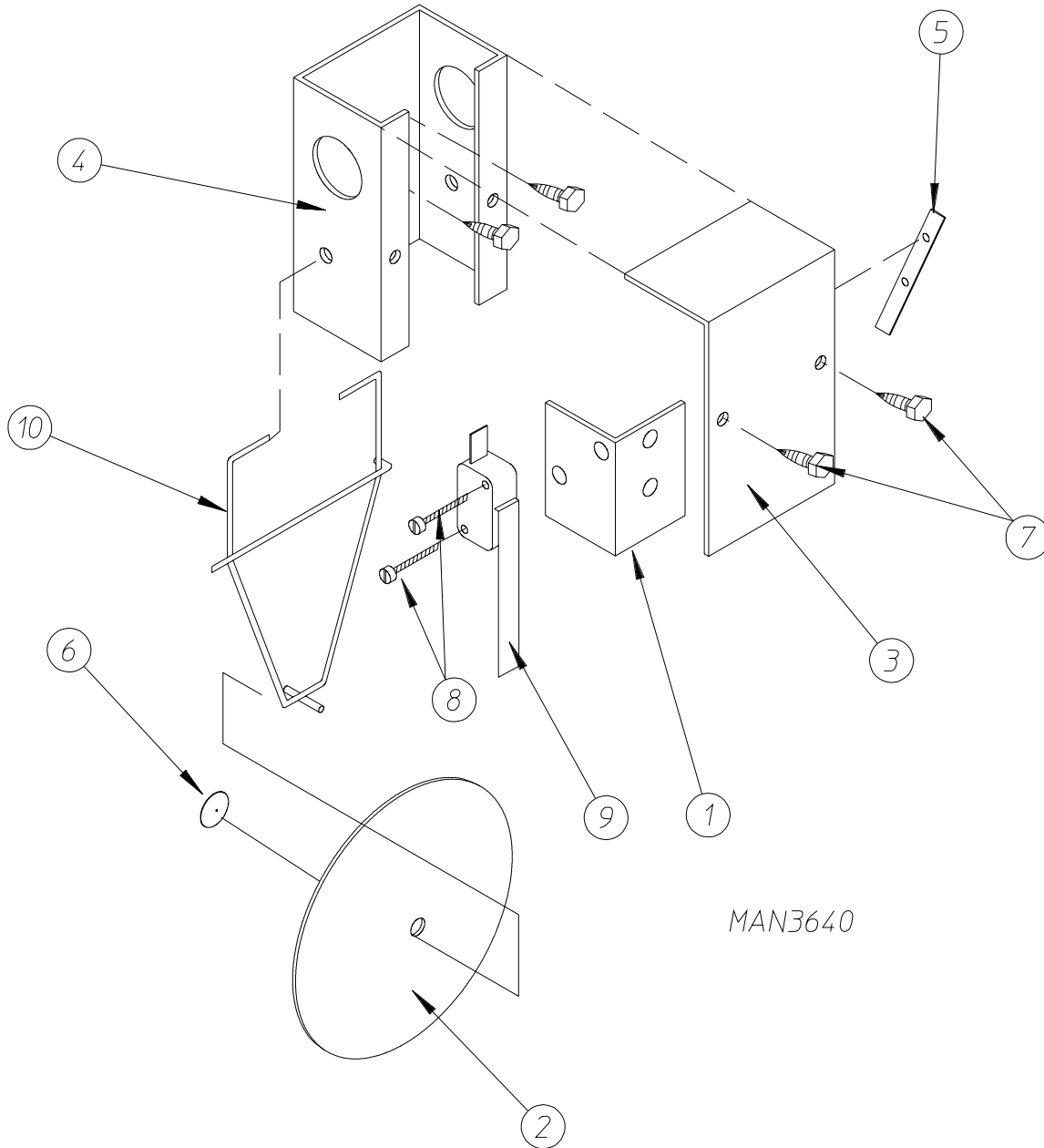
** Consult factory for elevations over 2,000 feet.



<u>Illus. No.</u>	<u>Part No.</u>	<u>Qty.</u>	<u>Description</u>
1	130400	1	290° Hi-Limit Thermostat
2	121011	1	Bus Bar (1/2" x 5/16")
3	153009	12	#10 Star Washer
4	152008	24	#10-32 Hex Nut
5	121010	1	L-70 Ground Lug
6	835059	1	Oven Weldment
7	120013	6	5 kW 240v 22" Electric Elements
8	817073	1	Sail Switch Box Assembly
9	150300	7	#10-16 x 1/2" Hex Washer TEK Screw
10	313787	1	Oven Relay Box Cover
11	150207	2	#10-24 x 1/2" Phillips Round Head Machine Screw
12	151001	3	#8-32 Pal Nut
13	131357	1	50-amp Oven Contactor
14	154001	2	#10-24 Speed Nut
15	313781	1	Large Electric Oven Right Side Cover
16	152014	1	1/4-20 Free Spin Wash Nut
17	311588	1	Sprinkler Head Mounting Plate
18	150301	2	#8-18 x 7/16" Phillips Pan Head TEK Screw
19	313784	1	Electric Oven Front Cover
20	143581	1	3 GPM 3/8" FPT Spray Nozzle
21	143303	1	3/8" Brass Lock Nut
22	143155	1	3/8" Brass Street Elbow



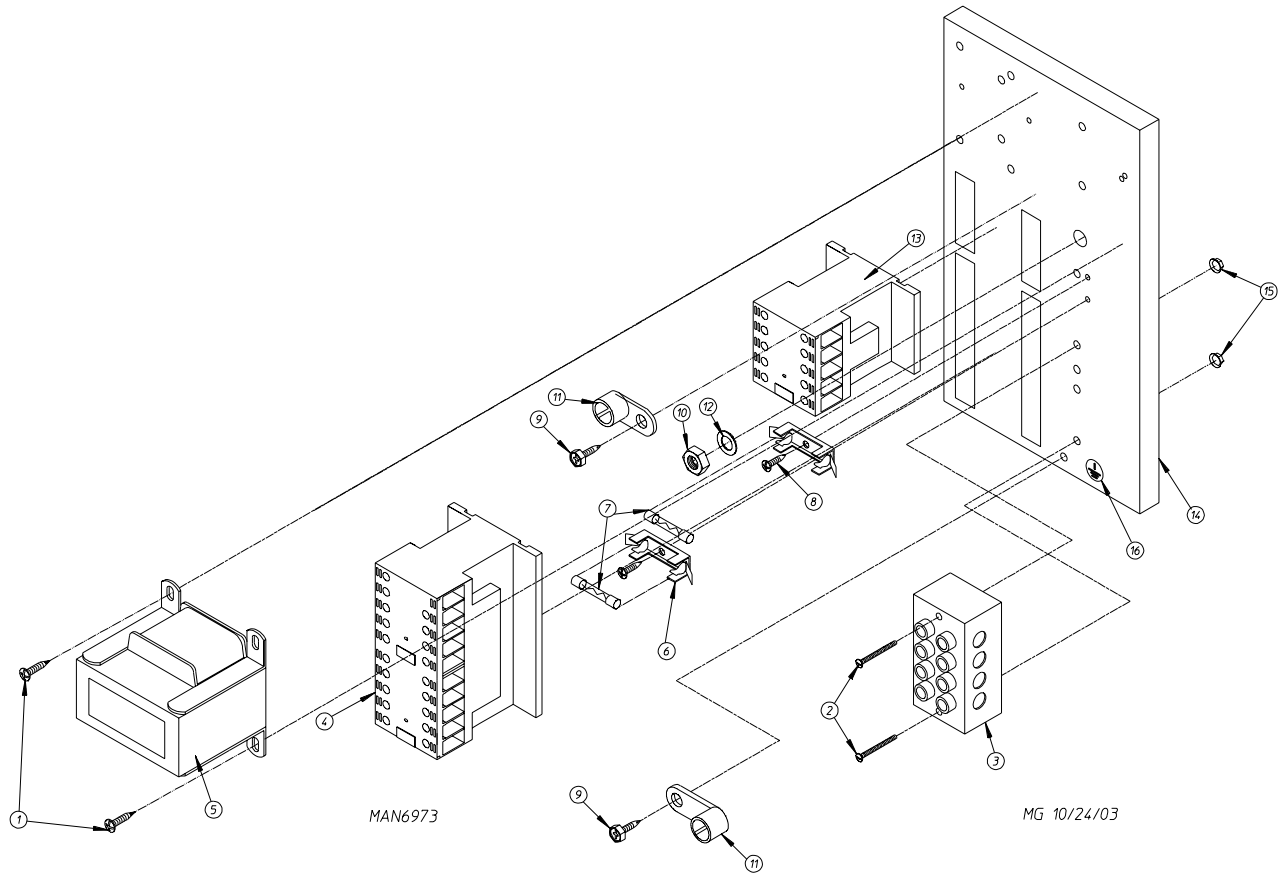
<u>Illus. No.</u>	<u>Part No.</u>	<u>Qty.</u>	<u>Description</u>
1	165009	1	Steam Coil Assembly
2	153002	6	5/16" Lock Washer
3	152004	6	5/16-18 Hex Nut
4	152002	4	1/4-20 Hex Nut
5	153007	4	1/4" Lock Washer
6	820321	2	Steam Damper Hinge Assembly
7	803415	1	Steam Damper Assembly (includes illus. nos. 7, 10, and 11)
8	153007	4	1/4" Lock Washer
9	152002	4	1/4-20 Hex Nut
10	115995	108	Steam Damper Gasket (sold by the inch)
11	102350	2	Steam Damper Foam (68-1/2" length)
12	151007	1	7/16-20 Stainless Steel Acorn Nut
13	100497	1	1-1/4" Bore x 3" Stroke Piston
14	100492	1	Piston Support Bracket
15	152002	4	1/4-20 Hex Nut
16	153007	4	1/4" Lock Washer
17	100472	1	1/4" x 1/8" Connector
18	143110	1	1/4" Tubing (sold by the foot)
19	100472	1	1/4" x 1/8" Connector
20	100496	1	1/8" Needle Valve
21	143238	1	1/8" Close Nipple
22	100498	1	3-Way Micro Valve - 24 VAC
23	150002	2	#6-32 x 1" Phillips Round Head Machine Screw
24	153010	2	#6 Star Washer
25	152000	2	#6-32 Hex Nut
26	330987	1	Micro Valve Support Bracket
27	152002	2	1/4-20 Hex Nut
28	153007	2	1/4" Lock Washer
29	100520	1	1/8" N.P.T. Silencer (muffler)
30	152007	1	7/16-20 Hex Nut
31	150301	8	#8-18 x 7/16" Phillips Pan Head TEK Screw
32	311590	1	Sprinkler and Temp Sensor Mounting Plate
33	822752	1	Phase 7 Fire Suppression System (F.S.S.) Temp Sensor Assembly
34	143581	1	3 GPM 3/8" FPT Spray Nozzle
35	143155	1	3/8" Brass Street Elbow
36	311588	1	Sprinkler Head Mounting Plate
37	143303	1	3/8" Brass Lock Nut



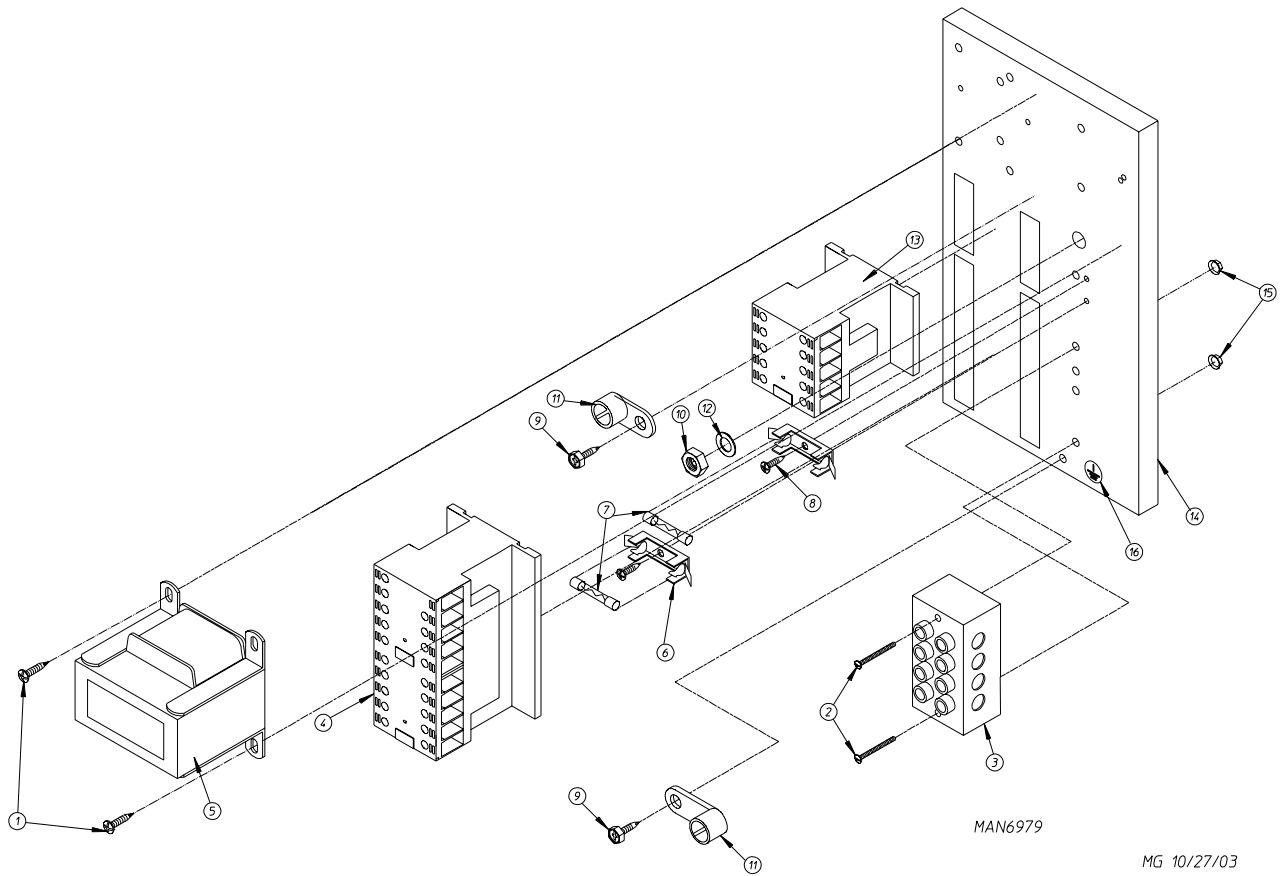
MAN3640

<u>Illus. No.</u>	<u>Part No.</u>	<u>Qty.</u>	<u>Description</u>
1	319203	1	Sail Switch Mounting Bracket
2	319202	1	Sail Switch Damper (flat)
3	319201	1	Sail Switch Box Cover
4	319200	1	Sail Switch Box
5	154004	1	Twin Speed Nut
6	154002	1	1/8" Push On Fastener
7	150309	4	#10-16 x 1/2" Hex Head TEK Crimptite Screw
8	150303	2	#4 x 3/4" Pan Head "A" Machine Screw
9	122200	1	Sail Switch ONLY
	881706	1	Sail Switch Box Assembly Complete (includes illus. nos. 1 through 10)
10	105500	1	Sail Switch Actuator Rod

Electric Relay Panel Assembly
Steam 208-240v



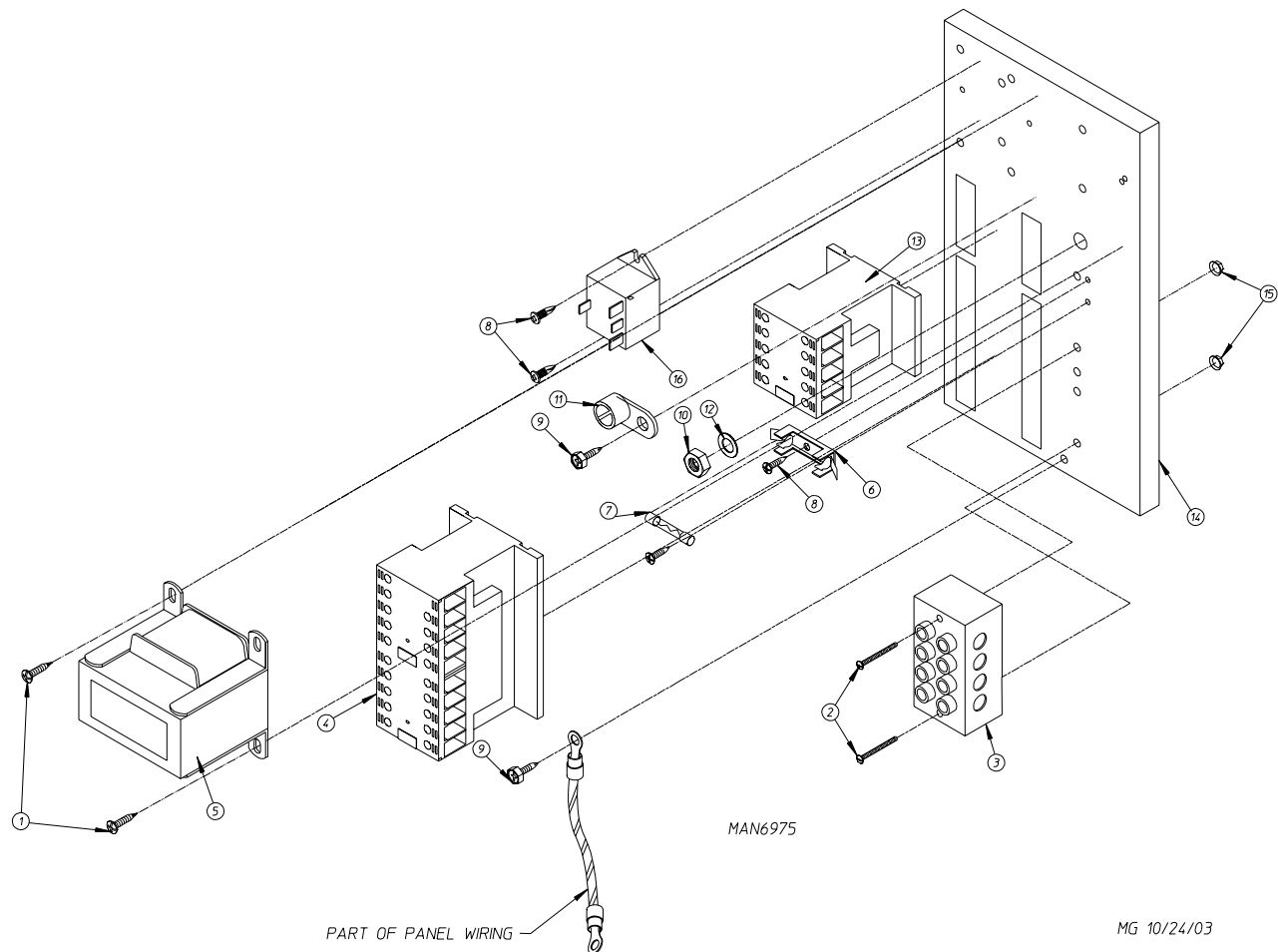
<u>Illus. No.</u>	<u>Part No.</u>	<u>Qty.</u>	<u>Description</u>
1	150300	2	#10-16 x 1/2" Hex Washer TEK Screw
2	150009	2	#6-32 x 1-1/2" Phillips Pan Head Machine Screw
3	120701	1	4-Position Terminal Block
4	132497	1	Reversing Contactor with Arc Suppression
5	822799	1	Transformer Assembly
6	136008	2	Fuse Holder
7	136057	2	1/2-amp 3A (Slo-Blo) Fuse
8	150301	2	#8-18 x 7/16" Phillips Pan Head TEK Screw
9	120910	2	#10-32 Green Ground Screw
10	152004	1	5/16-18 Hex Nut
11	121010	1	L-70 Ground Lug
12	153002	1	5/16" Lock Washer
13	132495	1	3-Pole Contactor with Arc Suppression
14	322812	1	Mounting Plate
15	151000	2	#6-32 Pal Nut
16	112075	1	Ground Label

**Electric Relay Panel Assembly
Gas and Steam 208-240v**


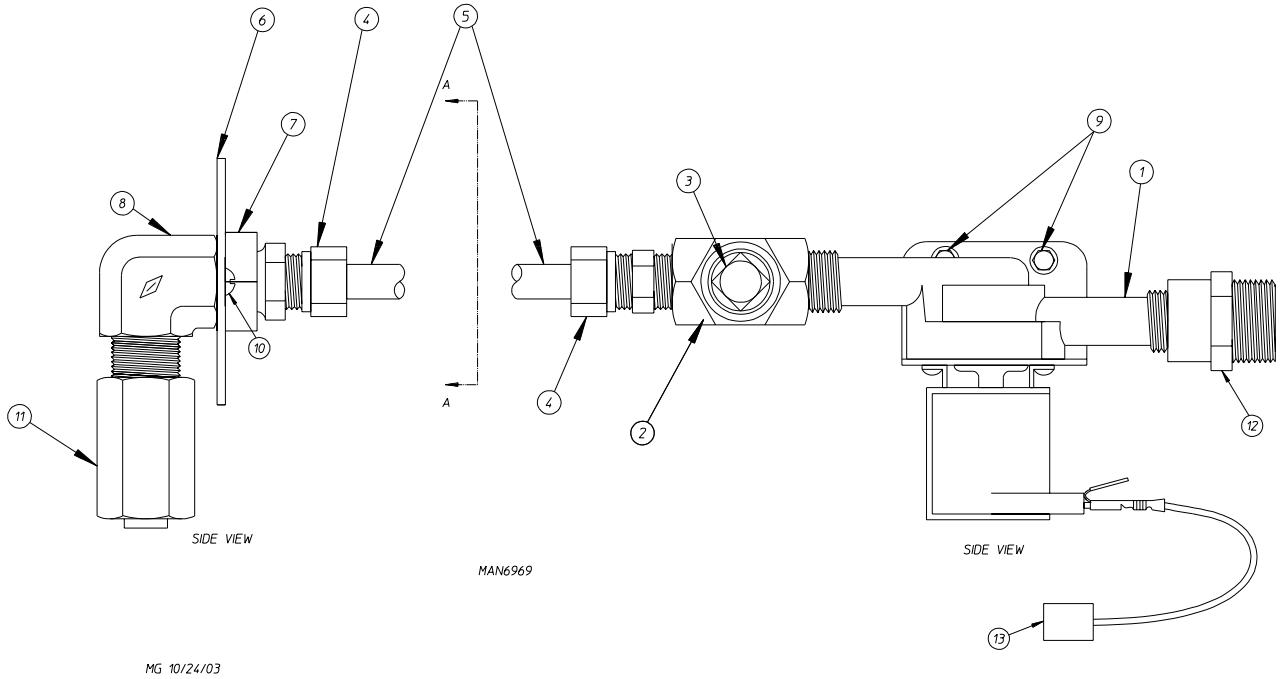
<u>Illus. No.</u>	<u>Part No.</u>	<u>Qty.</u>	<u>Description</u>
1	150300	2	#10-16 x 1/2" Hex Washer TEK Screw
2	150009	2	#6-32 x 1-1/2" Phillips Pan Head Machine Screw
3	120716	1	2-Position Terminal Block
	120701	1	4-Position Terminal Block
4	132497	1	Reversing Contactor with Arc Suppression (reversing models only)
5	822799	1	Transformer Assembly
6	136008	2	Fuse Holder
7	136057	2	1/2-amp 3A (Slo-Blo) Fuse
8	150301	2	#8-18 x 7/16" Phillips Pan Head TEK Screw
9	120910	2	#10-32 Green Ground Screw
10	152004	1	5/16-18 Hex Nut
11	121010	1	L-70 Ground Lug
12	153002	1	5/16" Lock Washer
13	132495	1	3-Pole Contactor with Arc Suppression
14	322812	1	Mounting Plate
15	151000	2	#6-32 Pal Nut
16	112075	1	Ground Label

Electric Relay Panel Assembly

Electric 380-416v

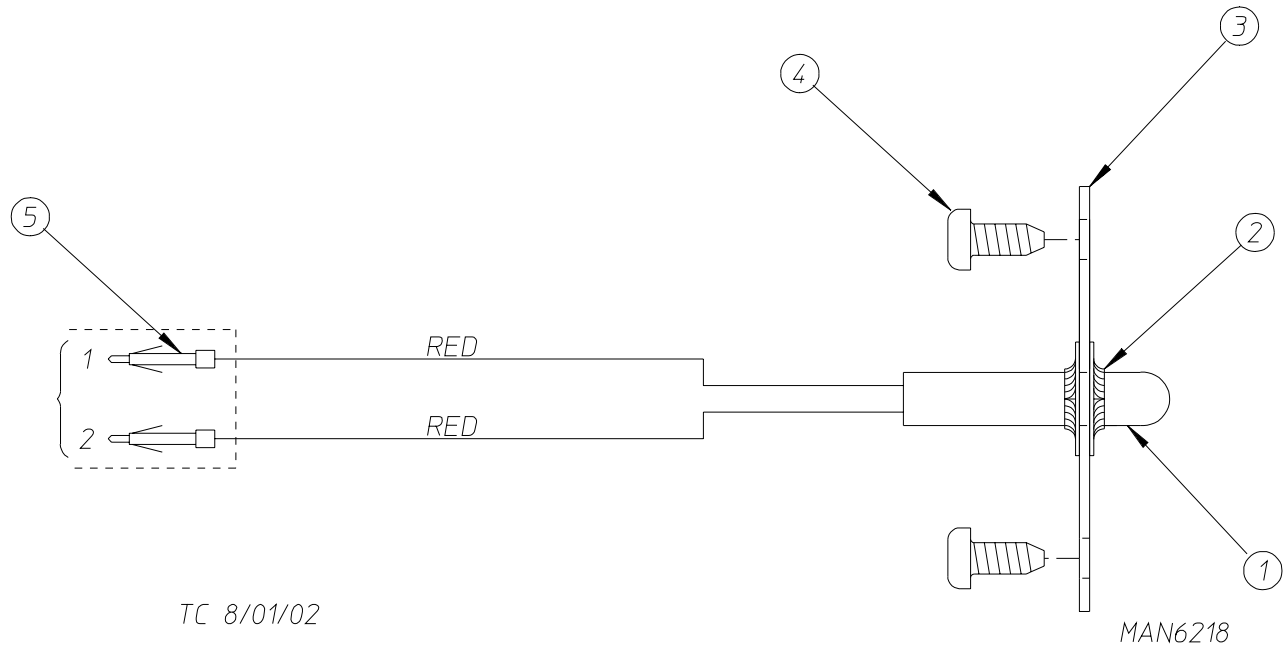


<u>Illus. No.</u>	<u>Part No.</u>	<u>Qty.</u>	<u>Description</u>
1	150300	2	#10-16 x 1/2" Hex Washer TEK Screw
2	150009	2	#6-32 x 1-1/2" Phillips Pan Head Machine Screw
3	120701	1	4-Position Terminal Block
4	132497	1	Reversing Contactor with Arc Suppression
5	822784	1	Transformer Assembly
6	136008	1	Fuse Holder
7	136057	1	1/2-amp 3A (Slo-Bl) Fuse
8	150301	5	#8-18 x 7/16" Phillips Pan Head TEK Screw
9	120910	2	#10-32 Green Ground Screw
10	152004	1	5/16-18 Hex Nut
11	121010	1	L-70 Ground Lug
12	153002	1	5/16" Lock Washer
13	132495	1	3-Pole Contactor with Arc Suppression
14	322812	1	Mounting Plate
15	151000	2	#6-32 Pal Nut
16	131932	1	Relay SPST 24v Panel (for electric models Only)

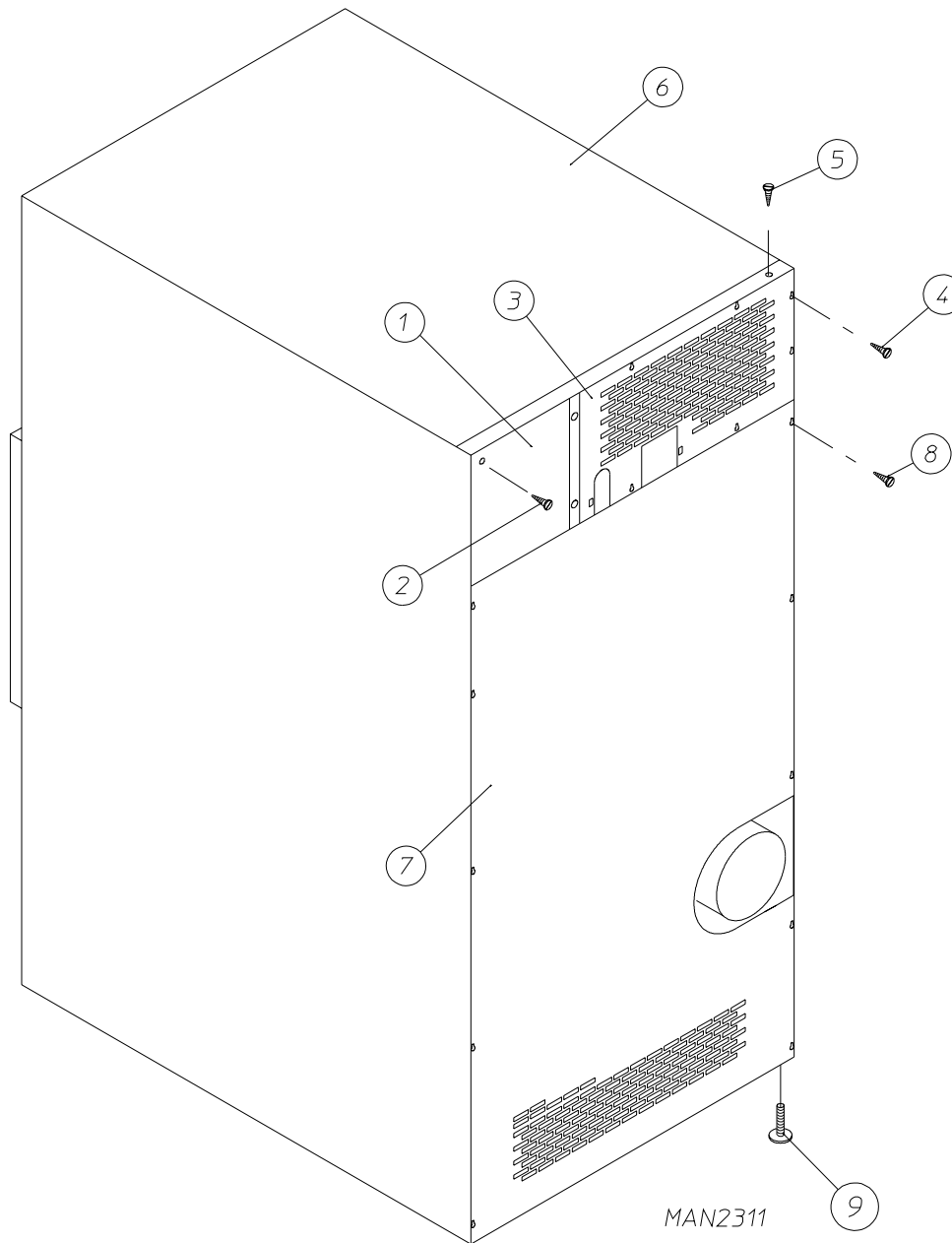


MG 10/24/03

<u>Illus. No.</u>	<u>Part No.</u>	<u>Qty.</u>	<u>Description</u>
1	165114	1	Fire Suppression System (F.S.S.) Solenoid Valve 24v 50/60 Hz
2	143220	2	3/8" FPT Brass Tee
3	143251	1	3/8" MPT Brass Plug
4	143208	2	3/8 Comp x 3/8 MPT Brass Connect
5	143099	16"	3/8" OD x 0.035 Wall Copper Tubing
6	311588	1	Sprinkler Head Mounting Plate
7	143303	1	3/8" Brass Lock Nut
8	143155	1	3/8" Brass Street Elbow
9	150300	2	#10-16 x 1/2" Hex Washer TEK Screw
10	150301	2	#8-18 x 7/16" Phillips Pan Head TEK Screw
11	143581	1	3 GPM 3/8" FPT Spray Nozzle
12	143025	1	3/8" NPT Nylon Hose Adapter
13	824081	1	RC Network Assembly



<u>Illus. No.</u>	<u>Part No.</u>	<u>Qty.</u>	<u>Description</u>
1	822752	1	Fire Suppression System (F.S.S.) Temperature Probe Assembly (includes illus. nos. 1 through 5)
2	154007	2	Push On Fastener
3	390390	1	Sensor Bracket ONLY
4	150301	2	#8-18 x 7/16" Phillips Pan Head TEK Screw
5	122647	1	Connector ONLY (does not include terminals)



<u>Illus. No.</u>	<u>Part No.</u>	<u>Qty.</u>	<u>Description</u>
1	322809	1	Back Electrical Box Cover
2	150301	4	#8-18 x 7/16" Phillips Pan Head TEK Screw
3*	323738	1	Top Back Guard (for gas models Only)
	314510	1	Top Back Guard (for electric models Only)
4	150301	7	#8-18 x 7/16" Phillips Pan Head TEK Screw
5	150300	10	#10-16 x 1/2" Hex Washer TEK Screw
6*	312527	1	Outer Top
7	314518	1	Bottom Back Guard
8	150301	13	#8-18 x 7/16" Phillips Pan Head TEK Screw
9	103500	4	Leveling Leg

* There is no outer top or top back guard on steam models.

KW	VOLTAGE	PHASE	WIRE	OVEN ASSEMBLY*	ELEMENT			OVEN WIRE WITH CRIMP TERMINAL			TERMINAL LUG		BUS BAR P/N: 121011	OVEN
					Qty.	Kw	Part No.	Qty.	Size	Part No.	Qty.	Part No.		
30	480	3Ø	3 or 4	826222	6	5	120013	1	#6	830402	1	121010	1	DPA53

* Consult factory for oven assemblies not listed.

<u>Part No.</u>	<u>Description</u>
112039	“Black/White/Green Ground” Label
112280	“Clean Lint Screen” Label
114001	“CAUTION - Exhaust/Lint Screen” Label
114521	“Phase 7 Non-Coin Program Location Summary” Label
114006	“WARNING - Fire Hazards” Label
114094	“MOP HEAD WARNING” Label
121499	5-1/2” Wire Tie
121500	8” Harness Tie
122804	Manometer (hydro gauge) for Measuring Gas Pressure
404502	White Brush-In-Cap Bottle Touch-Up Paint
410001	1/2” Allen Wrench (for removal of shutoff valve tail piece)
882458	Basket (tumbler) Puller Assembly

