

# **GIRBAU, S.A.**

## **STI-45 Phase 7 Parts Manual**

---

---

**Girbau, Inc.<sup>®</sup>**  
Carretera Manlleu, KM  
Vic, Barcelona, Spain  
54380

## Retain This Manual In A Safe Place For Future Reference

This product embodies advanced concepts in engineering, design, and safety. If this product is properly maintained, it will provide many years of safe, efficient, and trouble-free operation.

*ONLY qualified technicians should service this equipment.*

**OBSERVE ALL SAFETY PRECAUTIONS** displayed on the equipment or specified in the installation manual included with the dryer.

The following “**FOR YOUR SAFETY**” caution **must be** posted near the dryer in a prominent location.

### FOR YOUR SAFETY

Do not store or use gasoline or other flammable vapors and liquids in the vicinity of this or any other appliance.

### POUR VOTRE SÉCURITÉ

Ne pas entreposer ni utiliser d'essence ni d'autres vapeurs ou liquides inflammables à proximité de cet appareil ou de tout autre appareil.

We have tried to make this manual as complete as possible and hope you will find it useful. The manufacturer reserves the right to make changes from time to time, without notice or obligation, in prices, specifications, colors, and material, and to change or discontinue models.

## Important

For your convenience, log the following information:

DATE OF PURCHASE \_\_\_\_\_ MODEL NO. **STI-45 Phase 7**

DISTRIBUTOR'S NAME \_\_\_\_\_

Serial Number(s) \_\_\_\_\_

\_\_\_\_\_

\_\_\_\_\_

Replacement parts can be obtained from your distributor or **Girbau, S.A.** When ordering replacement parts from the factory, you can FAX your order to **Girbau, S.A.** at 3493-886-0785 or telephone your order directly to the **Girbau, S.A.** Parts Department at 3493-886-1100. Please specify the dryer **model number** and **serial number** in addition to the **description** and **part number**, so that your order is processed accurately and promptly.

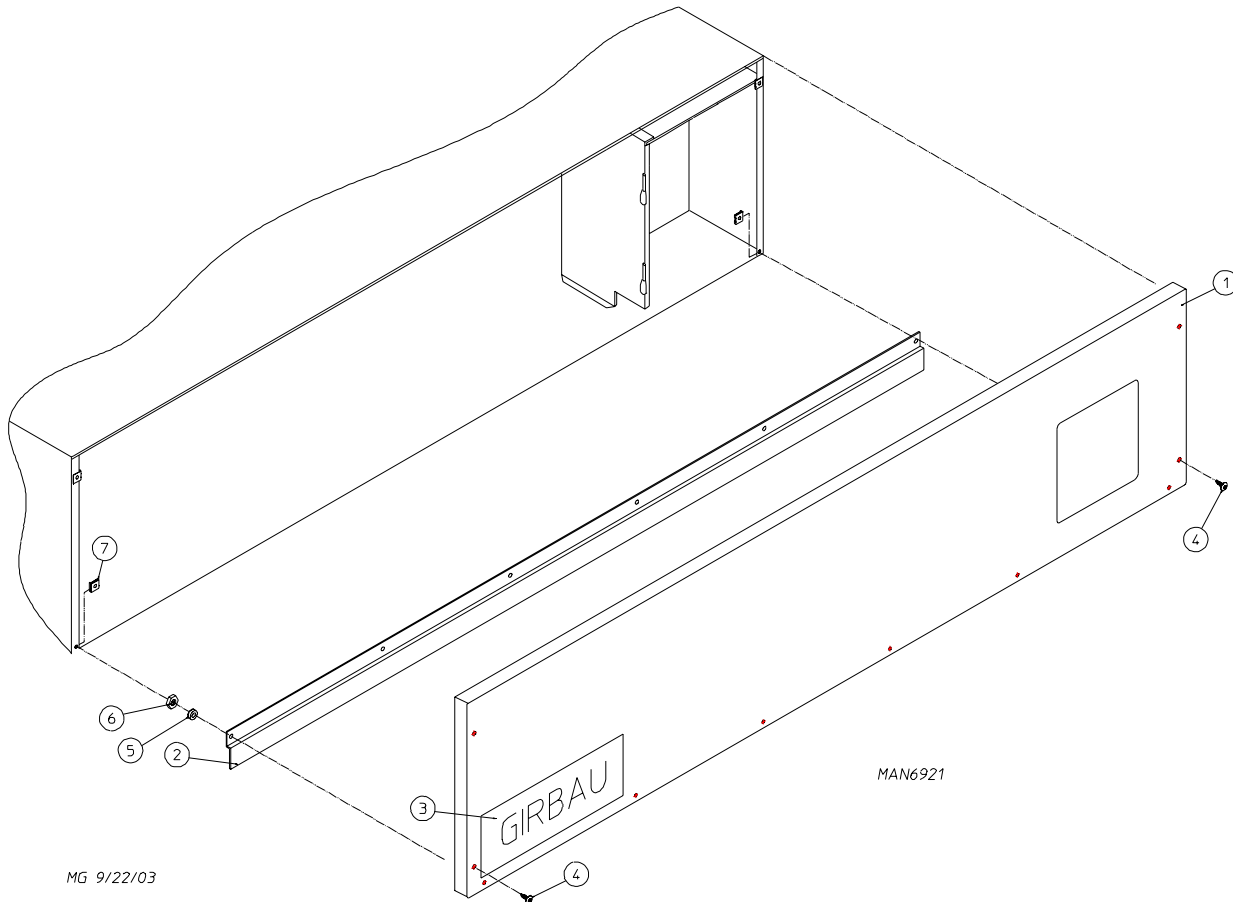
The illustrations on the following pages may not depict your particular dryer exactly. The illustrations are a composite of the various dryer models. Be sure to check the descriptions of the parts thoroughly before ordering.

### **“IMPORTANT NOTE TO PURCHASER”**

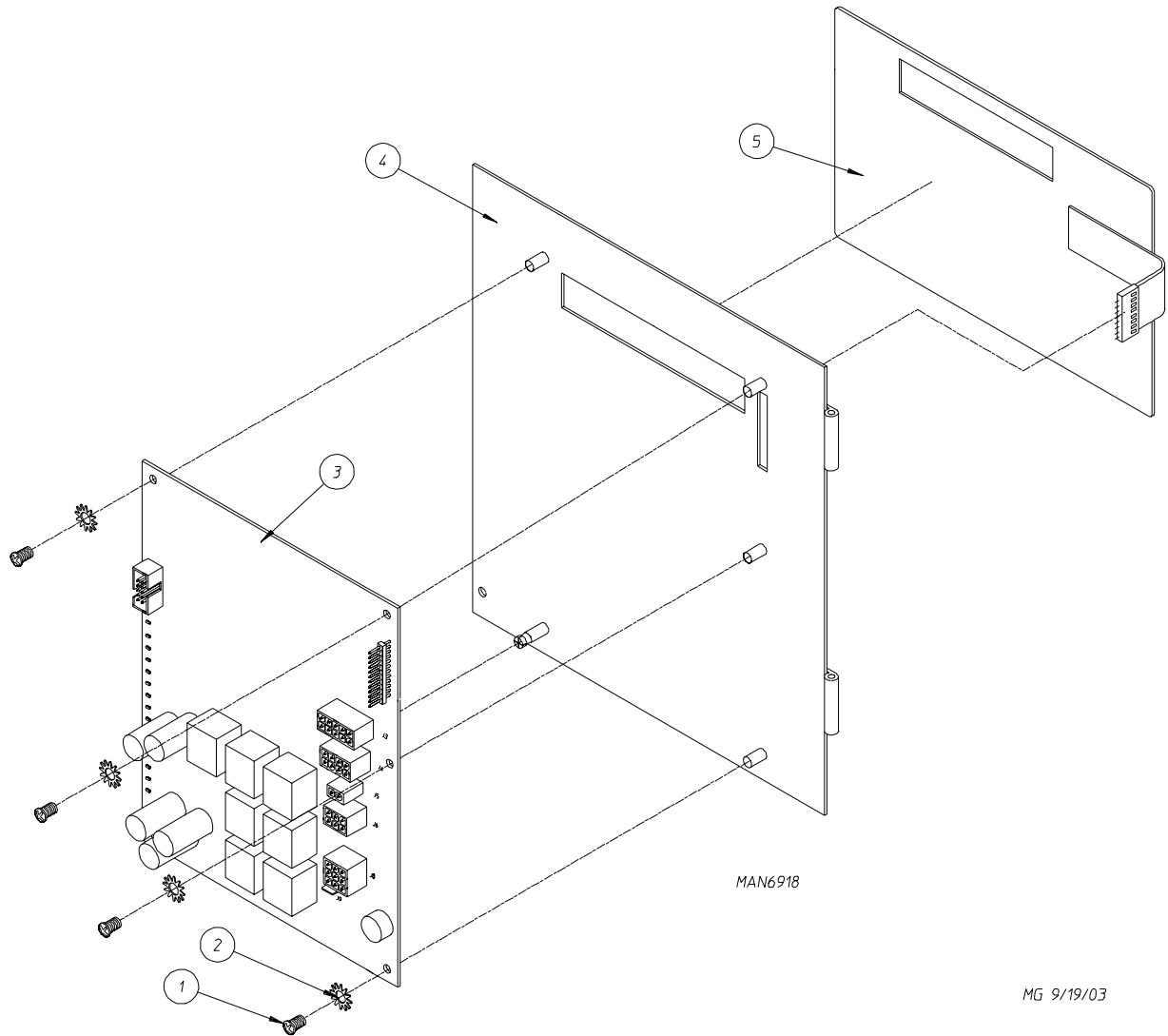
Information **must be** obtained from your local gas supplier on the instructions to be followed if the user smells gas. These instructions **must be** posted in a prominent location near the dryer.

# ***Table of Contents***

Control Door Assembly .....	2
Microprocessor Control Panel Assembly .....	3
Front Panel/Main Door Assemblies for 50 Hz Dryers .....	4
Front Panel/Main Door Assemblies for 60 Hz Dryers .....	5
Main Door Assembly .....	6
Main Door Switch .....	7
Basket (Tumbler)/Support Assemblies .....	8
Lint Door Assembly .....	9
Lint Drawer/Lint Drawer Switch Box Assemblies .....	10
Idler Bearing Mount Assembly .....	11
Basket (Tumbler) Bearing Mount Assembly .....	12
Reversing T.E.F.C. Basket (Tumbler) Motor Mount Assembly .....	13
Temperature Sensor Bracket Assembly .....	14
Direct Blower Drive Motor Assembly .....	15
Direct Spark Ignition (DSI) Gas Burner Assembly .....	16, 17
Electric Oven Assembly .....	18, 19
Sail Switch Assembly .....	20
Electric Oven Relay Box Assembly for 208-240V - 3 $\phi$ - 50/60 Hz Models Only .....	21
Electric Oven Relay Box Assembly for 380-416/480V - 3 $\phi$ - 50/60 Hz Models Only .....	22
Steam Damper Assembly .....	23
Reversing Relay Panel Assembly for 208-240V Gas and Steam Models Only .....	24
Reversing Relay Panel Assembly for 380/400V Gas and Steam Models Only .....	25
Reversing Relay Panel Assembly for 460/480V Gas and Steam Models Only .....	26
Reversing Relay Panel Assembly for Electric Models Only .....	27
Back Guard Assemblies .....	28
Electric Oven Component Application Charts .....	29
Electric Oven Power Distribution (60 kW - 480V - 3 $\phi$ - 50/60 Hz) .....	30
Electric Oven Power Distribution (72 kW - 208-240V - 3 $\phi$ - 50/60 Hz) .....	31
Electric Oven Power Distribution (72 kW - 380-400/480V - 3 $\phi$ - 50/60 Hz) .....	32
Electric Oven Wiring (72/80 kW - 208-240V - 3 $\phi$ - 50/60 Hz) .....	33
Electric Oven Wiring (60/72 kW - 380-480V - 3 $\phi$ - 50/60 Hz) .....	34
F.S.S. Solenoid Assembly .....	35
F.S.S. Temperature Probe Assembly .....	36
Additional Parts Available .....	37

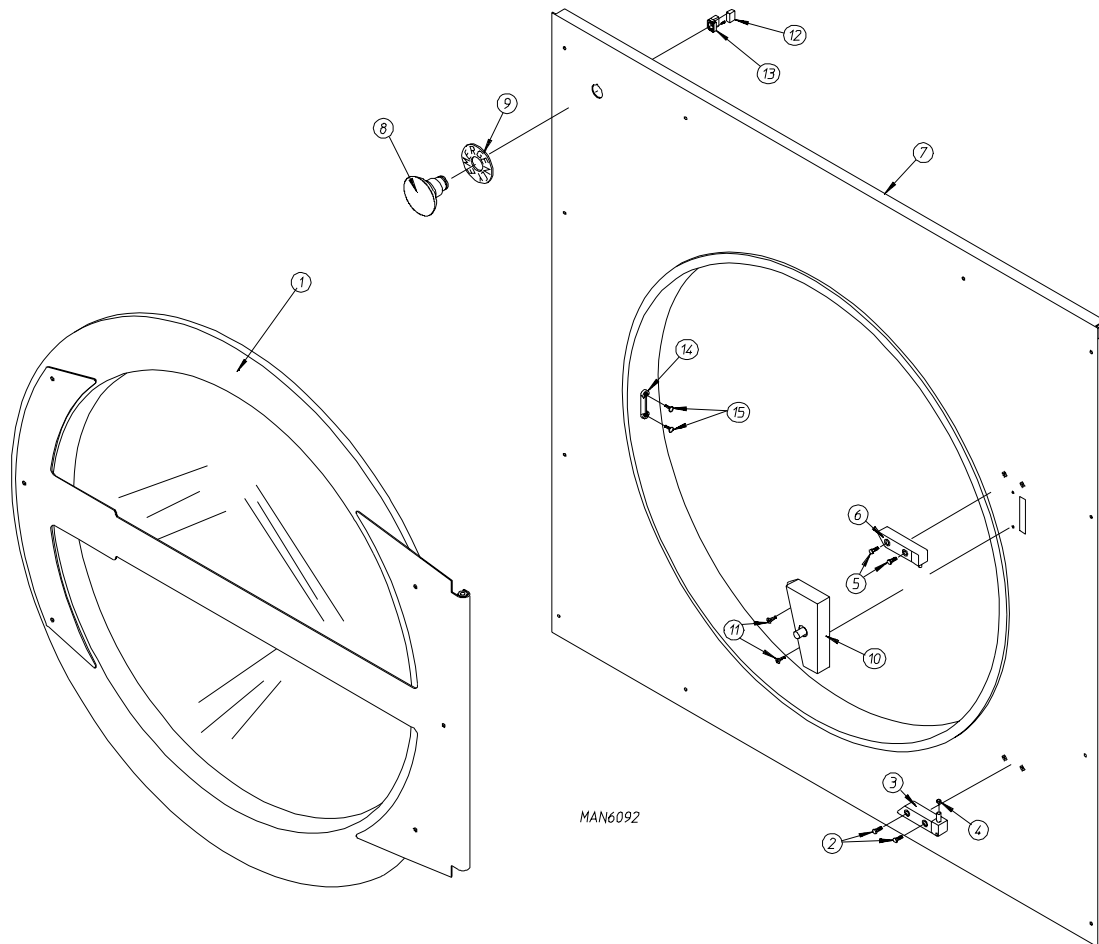


<u>Illus. No.</u>	<u>Part No.</u>	<u>Qty.</u>	<u>Description</u>
1	328360	1	Control Door
2	345883	1	Control Door Trim
3	112371	1	Girbau Logo Plate
4	150217	4	#10-32 x 3/4" Phillips Pan Head Machine Screw
5	153024	6	#10 Split Lock Washer
6	152008	6	#10-32 Hex Nut
7	154011	4	#10-32 Multi-Thread U-Nut
	884020	1	White Control Door Assembly (includes illus. nos. 1, 2, 5, and 6)



<u>Illus. No.</u>	<u>Part No.</u>	<u>Qty.</u>	<u>Description</u>
1	150005	4	#6-32 x 3/4" Phillips Round Head Machine Screw
2	153010	4	#6 Star Washer
3	137247	1	Phase 7 Computer Board
4	850979	1	Phase 7 Micro Non-Coin Panel
5	112571	1	Phase 7 Non-Coin Keyboard

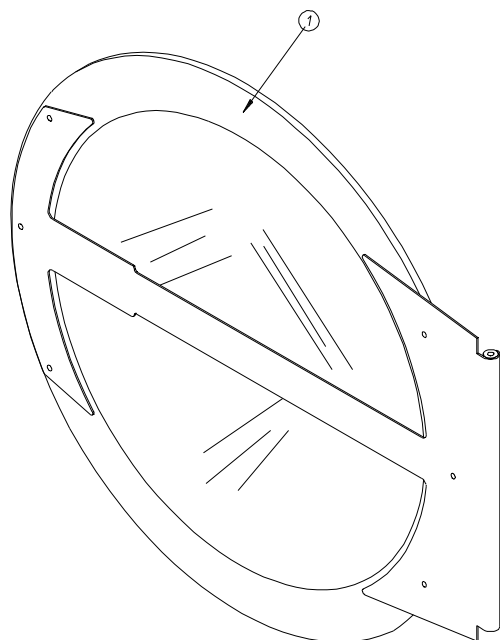
For 50 Hz Dryers



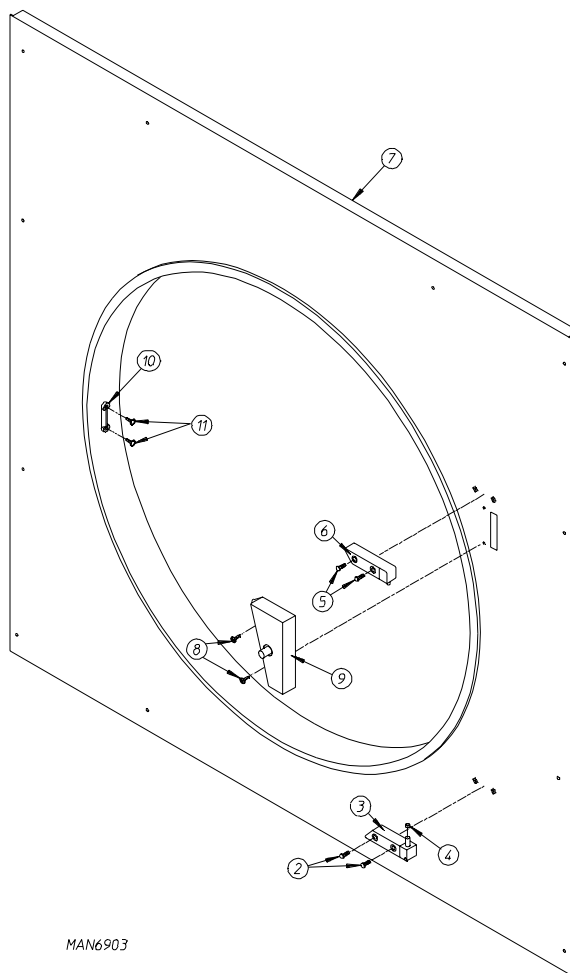
DMG 2/27/02

<u>Illus. No.</u>	<u>Part No.</u>	<u>Qty.</u>	<u>Description</u>
1	-----	---	Cold Rolled Steel (CRS) Main Door Assembly (refer to <b>Main Door Assembly</b> on <b>page 6</b> )
2	150443	2	Socket Cap Screw
3	170331	1	Bottom Hinge Block
4	153031	1	Nylon Washer
5	150443	2	Socket Cap Screw
6	170329	1	Top Hinge Block
7	825411	1	Front Panel Assembly for Cold Rolled Steel (CRS) Door
8	123500	1	Large "EMERGENCY STOP" Mushroom Head Switch
9	123506	1	"EMERGENCY STOP" Nameplate
10	-----	1	Main Door Switch and Housing for Round Door (refer to <b>Main Door Switch</b> on <b>page 7</b> )
11	150301	2	#8 x 7/16" Phillips Head TEK Screw
12	123517	1	Normally Closed (N.C.) Contact Block
13	123521	1	Normally Closed (N.C.) Contact Block with Base
14	170330	1	Friction Door Latch
15	154215	2	5/32" x 1/4" Audel Rivet

For 60 Hz Dryers

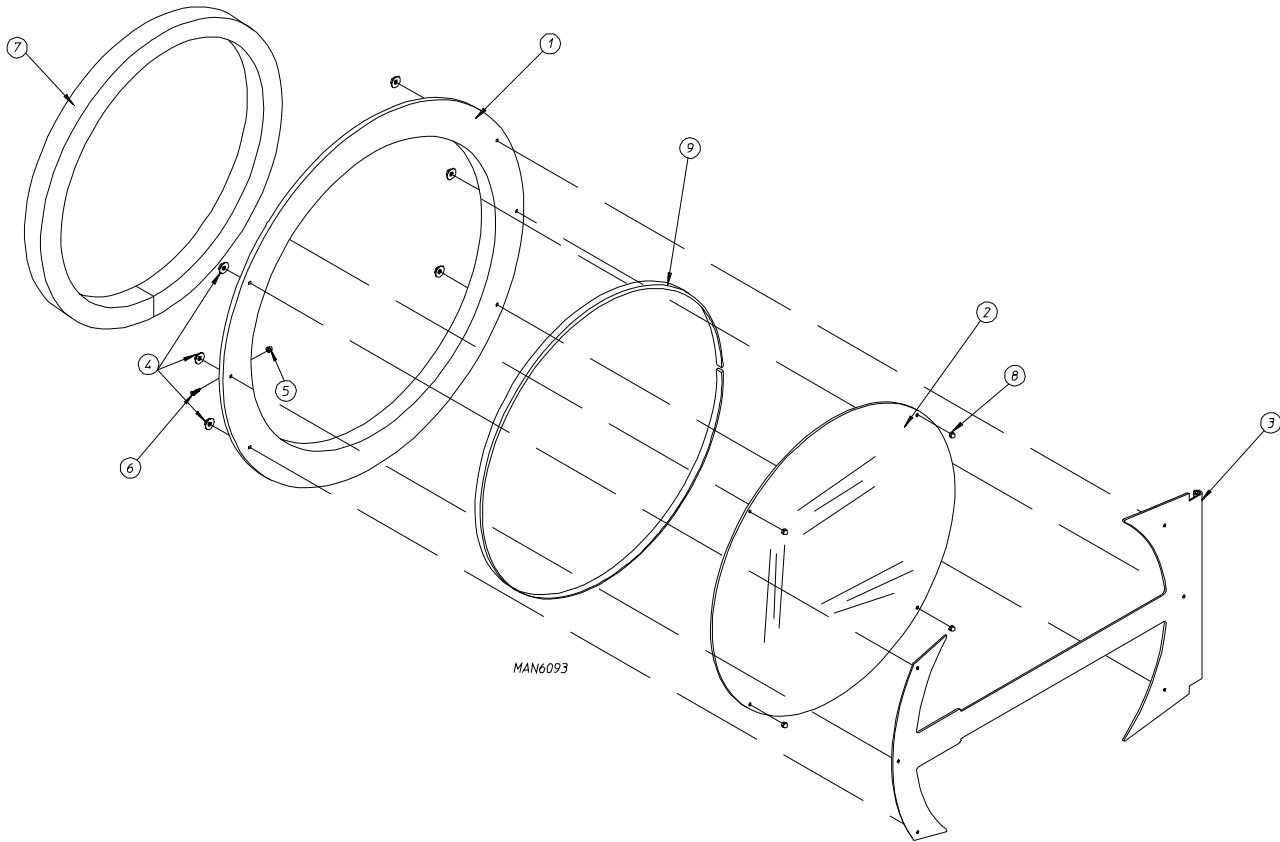


MG 9/17/03



MAN6903

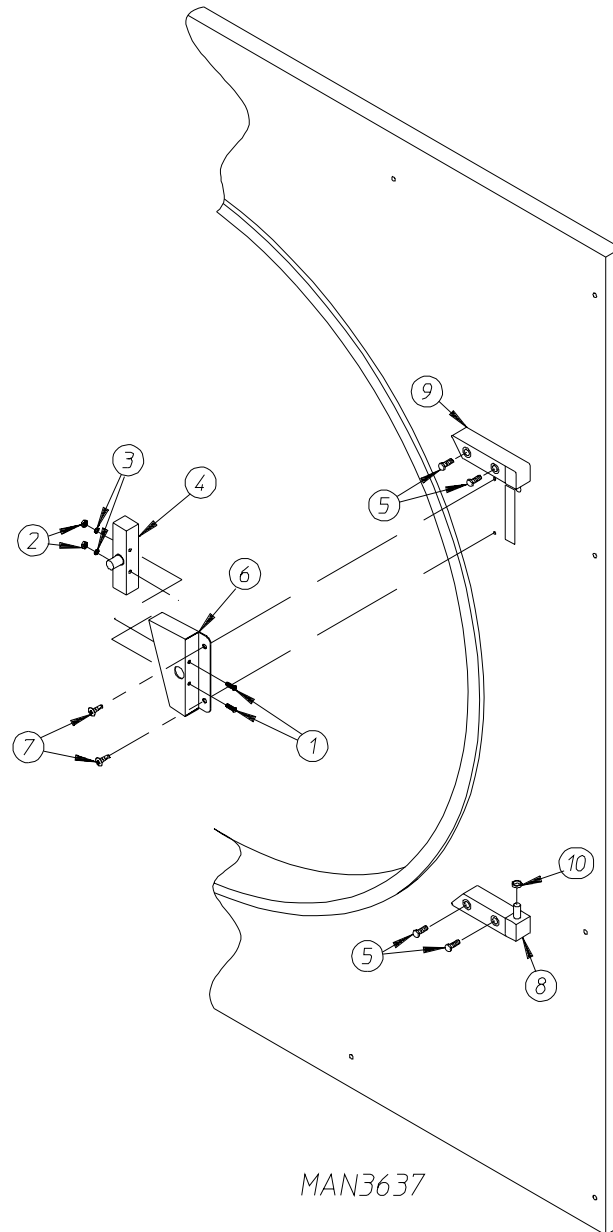
<u>Illus. No.</u>	<u>Part No.</u>	<u>Qty.</u>	<u>Description</u>
1	-----	---	Cold Rolled Steel (CRS) Main Door Assembly (refer to <b>Main Door Assembly</b> on <b>page 6</b> )
2	150443	2	Socket Cap Screw
3	170331	1	Bottom Hinge Block
4	153031	1	Nylon Washer
5	150443	2	Socket Cap Screw
6	170329	1	Top Hinge Block
7	825195	1	Front Panel Assembly for Cold Rolled Steel (CRS) Door
	884002	1	Front Panel with Friction Latch (includes illus. nos. 7, 10, and 11)
8	150301	2	#8 x 7/16" Phillips Head TEK Screw
9	801786	1	Main Door Switch and Housing
10	170330	1	Friction Door Latch
11	154215	2	5/32" x 1/4" Audel Rivet



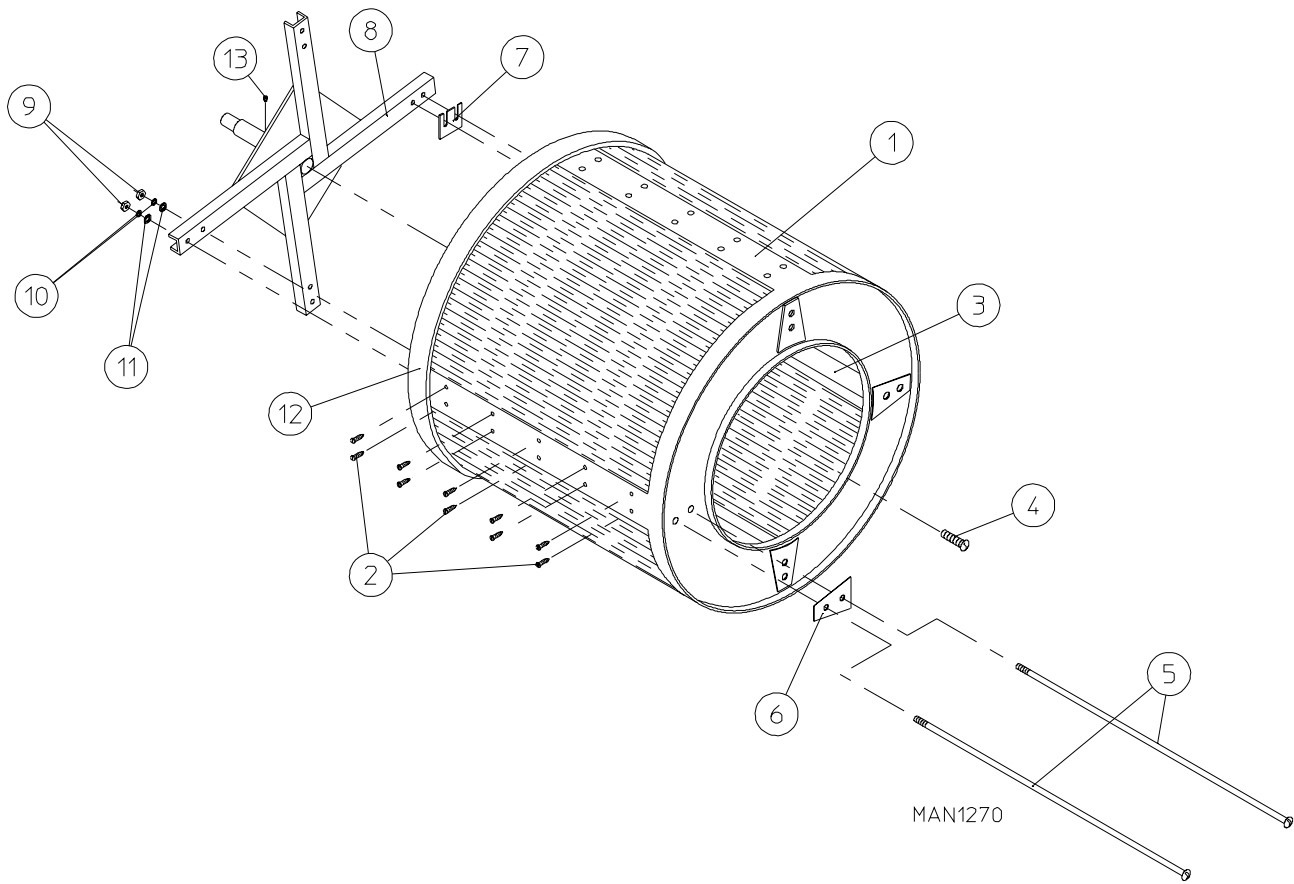
DMG 2/27/02

<u>Illus. No.</u>	<u>Part No.</u>	<u>Qty.</u>	<u>Description</u>
1	883292	1	White Main Door Assembly Complete (includes illus. nos. 1 through 9)
	835057	1	Large Main Door Ring
2	102214	1	30" Door Glass
3	816109	1	Girbau Door Handle
4	152014	6	1/4-20 Free Spin Wash Nut
5	151009	1	Stainless Steel Hex Acorn Lock Nut
6	150120	1	#10-32 x 7/16" Door Latch Screw
7	102357	1	Extruded Steel Door Gasket
8	151012	4	#10-32 Nylon Acorn Nut (White)
9	102362	8'	White Gasket Tape



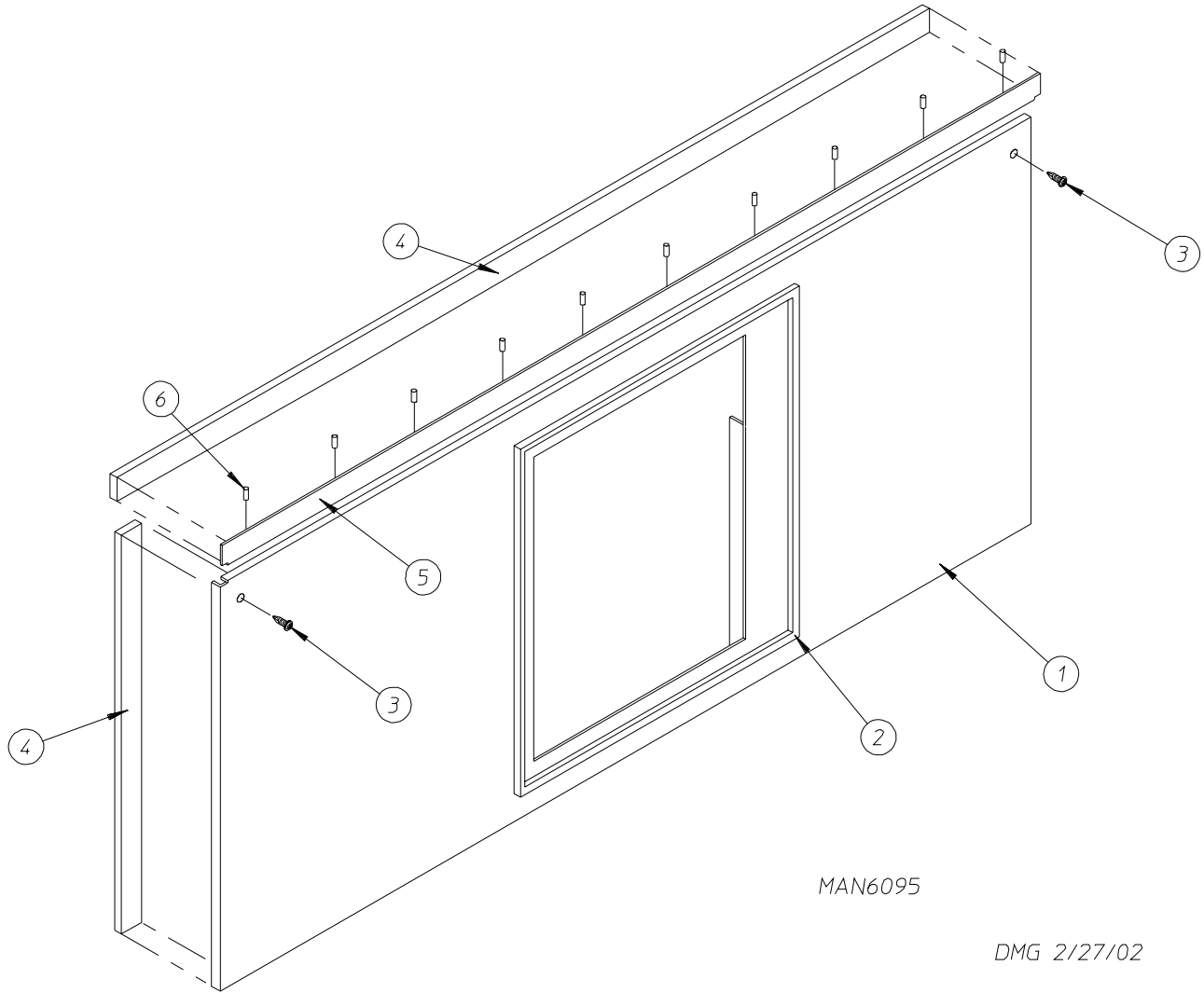


<u>Illus. No.</u>	<u>Part No.</u>	<u>Qty.</u>	<u>Description</u>
1	150006	2	#6-32 x 7/8" Phillips Pan Head Machine Screw
2	152013	2	#6-32 Hex Nut
3	153010	2	#6 Star Washer
4	137005	1	Single-Pole Door Switch
5	150301	4	#8-18 x 7/16" Phillips Pan Head TEK Screw
6	881687	1	Main Door Switch Housing ONLY (White)
	881702	1	Main Door Switch with Housing Assembly (White) (includes illus. nos. 1 through 4 and 6)
7	150301	2	#8-18 x 7/16" Phillips Pan Head TEK Screw
8	881441	1	White Bottom Hinge Block
9	881440	1	White Top Hinge Block
10	153031	1	Nylon Washer

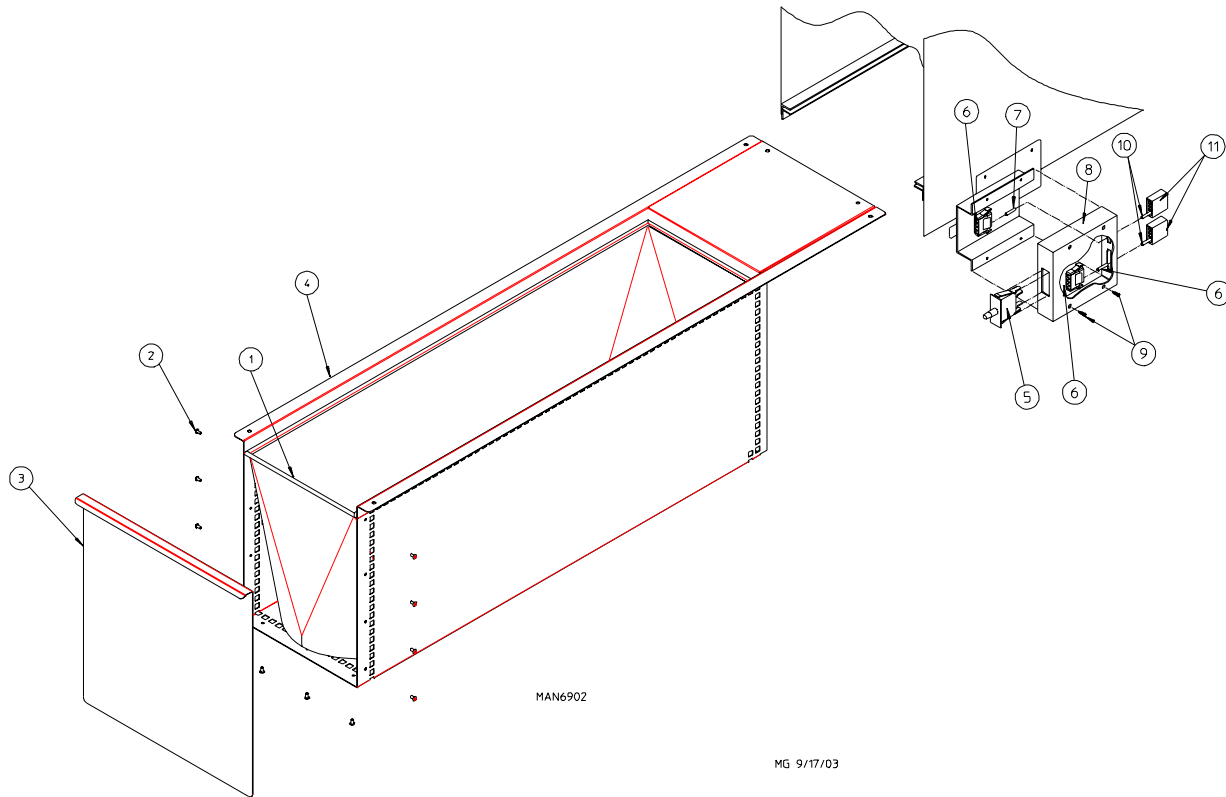


<u>Illus. No.</u>	<u>Part No.</u>	<u>Qty.</u>	<u>Description</u>
1	820029	1	Stainless Steel Basket and Support Assembly Complete (includes illus. nos. 1 through 12)
2	150309	40	#10-16 x 1/2" Hex Head TEK Crimptite Screw
3	331105	4	Basket (Tumbler) Rib ONLY
4	150500	1	5/16-18 x 3/4" Socket Button Head Screw
5	100910	8	1/2-13 x 44" Tie Rod
6	301700	4	Basket (Tumbler) Reinforcing Plate ONLY
7	301701	*	Basket (Tumbler) Shim ONLY
8	820116	1	Basket (Tumbler) Support ONLY with Rotational Sensor Option
9	152011	8	1/2-13 Hex Nut
10	153026	8	1/2" Lock Washer
11	153011	8	9/16" Flat Washer
12	116006	1	Felt Collar ONLY
	401010	1	#847 Adhesive for Felt Collar (5 oz. tube)
13	821002	1	Rotational Magnet Holder Assembly

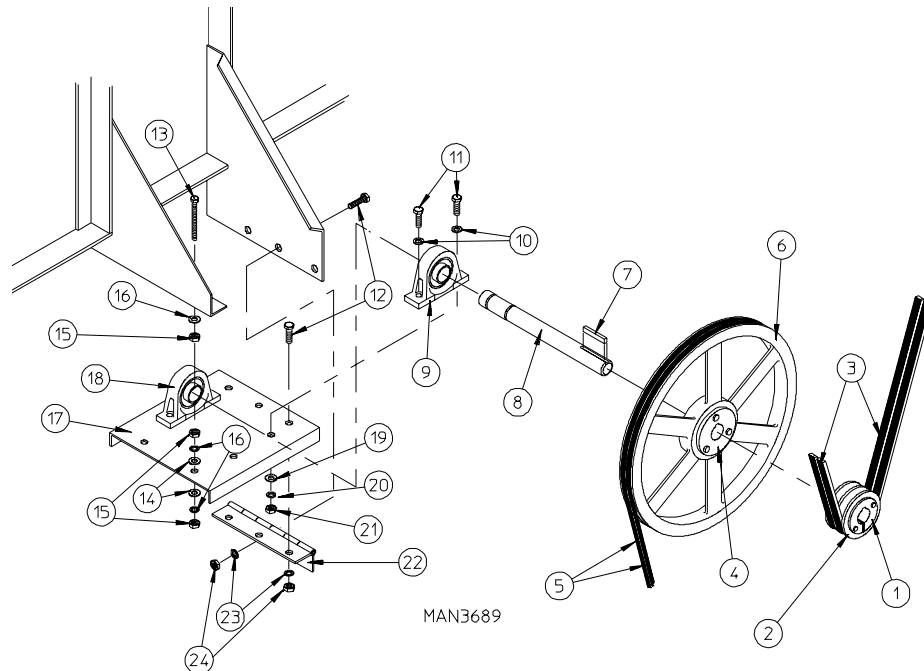
\* As required.



<u>Illus. No.</u>	<u>Part No.</u>	<u>Qty.</u>	<u>Description</u>
1	845012	1	Lint Door
2	117607	5'	1/4" x 3/8" Poron Foam Tape
3	150309	5	#10-16 x 1/2" Hex Head TEK Crimptite Screw
4	117604	8'	1/8" x 3/8" Neoprene Sponge Tape
5	345882	1	Lint Door Trim
6	154215	10	Rivet

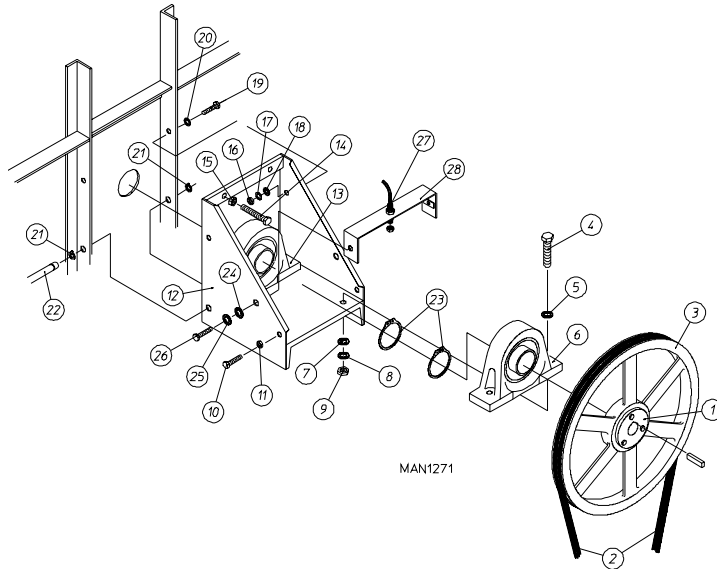


<u>Illus. No.</u>	<u>Part No.</u>	<u>Qty.</u>	<u>Description</u>
1	108209	1	Lint Bag
2	154211	11	Button Head Rivet
3	801137	1	Lint Drawer Handle
4	850949	1	Lint Basket
	883400	1	Complete Lint Basket (includes illus. nos. 2 through 4)
5	122116	1	Lint Drawer Switch ONLY
6	122605	1	4-Pin Socket Connector
7	122701	2	Socket Terminal ONLY
	122801	1	Pin/Socket Extraction Tool
8	882507	1	Lint Drawer Switch Box Assembly Complete (includes illus. nos. 6 through 9)
9	150301	4	#8-18 x 7/16" Phillips Pan Head TEK Screw
10	122700	2	Pin Terminal ONLY
11	122604	1	4-Pin Connector



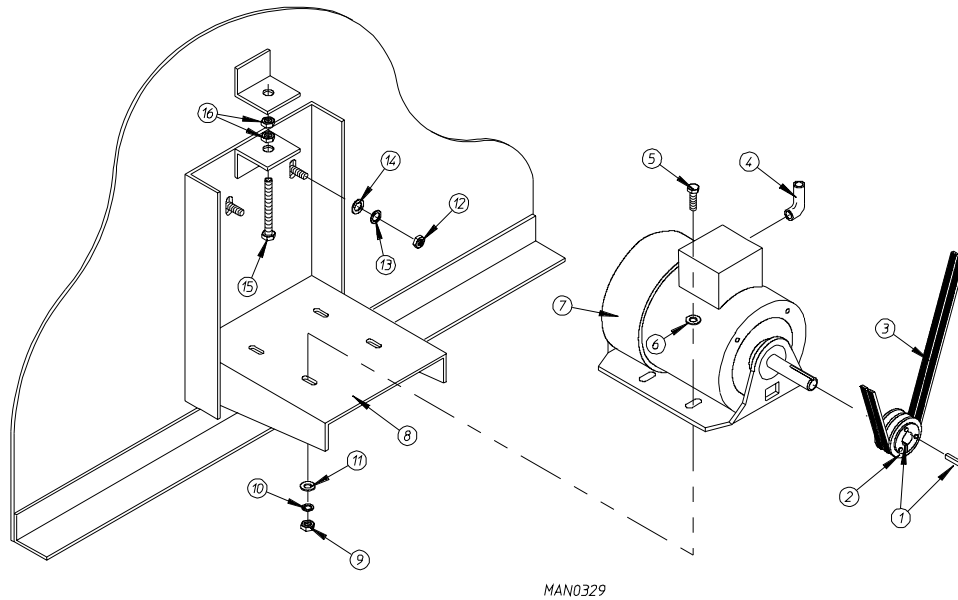
<u>Illus. No.</u>	<u>Part No.</u>	<u>Qty.</u>	<u>Description</u>
1	101110	1	1" Bushing
2	101113	1	2A x 3.0 Pulley
3*	100135	2	AP-74 V-Belt
4	101107	1	1" SK Bushing
5*	100170	2	3V-710 Cogged Belt
6	101112	1	19" Idler Pulley
7	100715	1	1/4" x 1/4" x 4-5/8" Key
8	301852	1	1" Idler Shaft ONLY
9	880205	1	1" Pillow Block Bearing ONLY
10	153004	4	3/8" Flat Washer
11	150600	4	3/8-16 x 1-1/2" Hex Head Machine Bolt
12	150512	6	1/4-20 x 1/2" Hex Head Machine Bolt
13	150509	2	5/16-18 x 3" Hex head Machine Bolt
14	153001	4	5/16" Flat Washer
15	152004	6	5/16" Hex Nut
16	153002	8	5/16" Lock Washer
17	801001	1	Idler Bearing Mount Assembly Complete (includes illus. nos. 8 through 11 and 17 through 24)
	311401	1	Idler Bearing Mount ONLY
18	880205	1	1" Pillow Block Bearing ONLY
19	153004	4	3/8" Flat Washer
20	153005	4	3/8" Lock Washer
21	152005	4	3/8-16 Hex Nut
22	103005	1	Idler Adjustment Hinge ONLY
23	153007	6	1/4" Lock Washer
24	152002	6	1/4-20 Hex Nut

\* Replace in matched sets (both belts).



<u>Illus. No.</u>	<u>Part No.</u>	<u>Qty.</u>	<u>Description</u>
1	101137	1	2-1/4" SFX Bushing
2*	100135	2	AP-74 V-Belt
3	101136	1	2B x 20" Basket (Tumbler) Pulley
4	150602	4	5/8-11 x 3" Hex Head Machine Bolt
5	153016	4	5/8" Flat Washer
6	100258	1	2-1/4" Griplock Pillow Bearing ONLY
7	153016	4	5/8" Flat Washer
8	153015	4	5/8" Lock Washer
9	152010	4	5/8-11 Hex Nut
10	150600	2	3/8-16 x 1-1/2" Hex Head Machine Bolt
11	152005	2	3/8-16 Hex Nut
12	801102	1	Basket (Tumbler) Bearing Mount Assembly (includes illus. nos. 4 through 13)
13	100258	1	2-1/4" Griplock Pillow Bearing ONLY
14	150604	2	1/4-20 x 3" Tap Bolt
15	152012	2	1/4-20 Hex Nut
16	152005	2	3/8-16 Hex Nut
17	153005	2	3/8" Lock Washer
18	153004	4	3/8" Flat Washer
19	150600	2	3/8-16 x 1-1/2" Hex Head Machine Bolt
20	153004	2	3/8" Flat Washer
21	100801	2	5/8" Retaining Ring
22	301810	1	5/8" Hinge Pin
23	100811	2	2-1/4" Retaining Ring
24	153018	2	1/4" Flat Washer
25	153007	2	1/4" Lock Washer
26	150512	2	1/4-20 x 1/2" Hex Head Machine Bolt
27	822735	1	Rotational Sensor Assembly
28	820098	1	Rotational Sensor Mounting Bracket

\* Replace in matched sets (both belts).

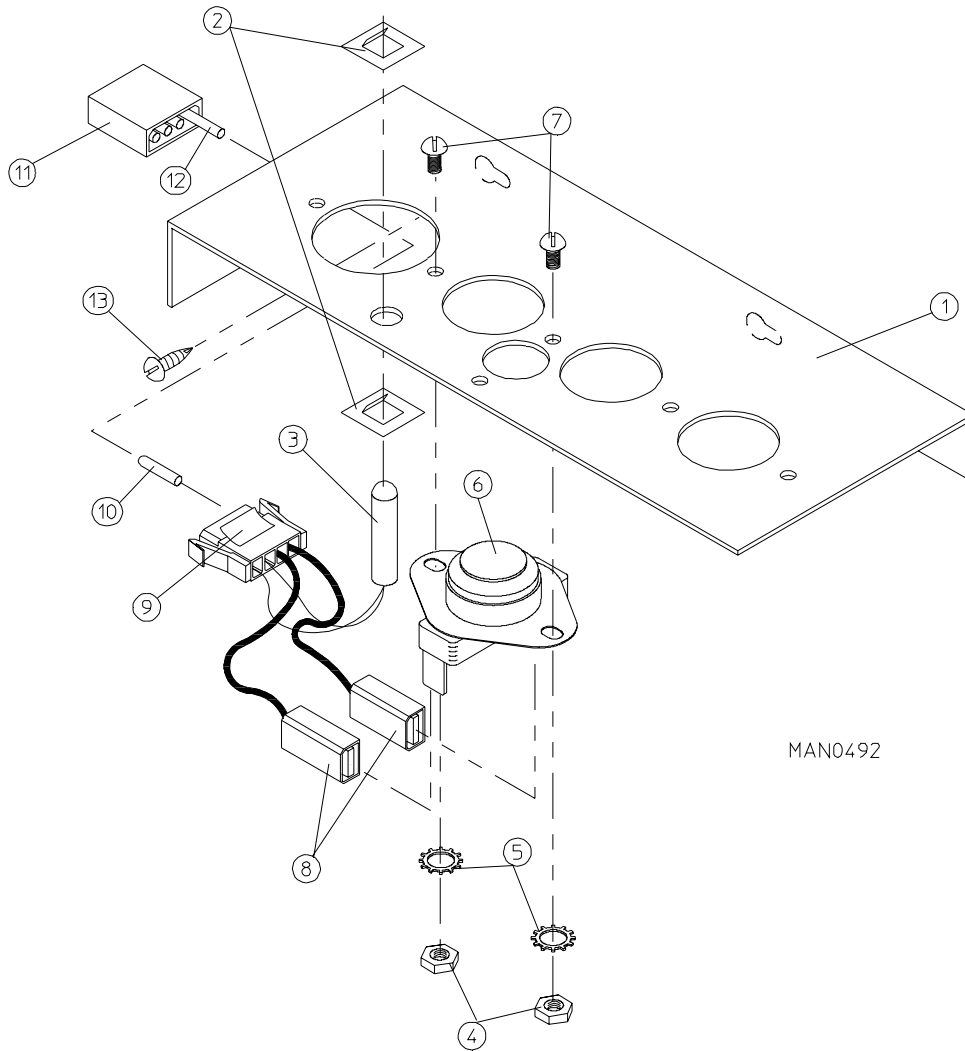


<u>Illus. No.</u>	<u>Part No.</u>	<u>Qty.</u>	<u>Description</u>
1	101121	1	5/8" SK Bushing
2	101114	1	2.65" Pulley (for 60 Hz Models Only)
	101120	1	3.15" Pulley (for 50 Hz Models Only)
3*	100170	2	3V-710 Cogged Belt (for 60 Hz Models Only)
	100155	2	AP-74 V-Belt (for 50 Hz Models Only)
4	120200	1	3/8" x 90° Connector
5	150501	4	5/16-18 x 3/4" Hex Head Machine Bolt
6	153001	4	5/16" Flat Washer
7	100029	1	3/4 hp 208/230/380/460v 3ø 50/60 Hz Totally Enclosed, Fan-Cooled (T.E.F.C.) Motor (56Z Frame)
8	800952	1	Basket (Tumbler) Motor Mount ONLY (56Z Frame)
	800953**	1	3/4 hp 208/230/460v 3ø 60 Hz Basket Motor Mount Assembly Complete (includes illus. nos. 1, 2, 5, 7, 10, 11, 12, 15, and 16)
	800955**	1	3/4 hp 208/230/380/460v 3ø 50 Hz Motor Mount Assembly Complete (includes illus. nos. 1, 2, 5, 7, 10, 11, 12, 15, and 16)
9	152004	4	5/16-18 Hex Nut
10	153002	4	5/16" Lock Washer
11	153001	4	5/16" Flat Washer
12	152004	4	5/16-18 Hex Nut
13	153002	4	5/16" Lock Washer
14	153001	4	5/16" Flat Washer
15	150619	1	3/8-16 x 3" Hex Head Machine Bolt
16	152005	2	3/8-16 Hex Nut

\* Replace in matched sets (both belts).

\*\* Specify voltage when ordering.

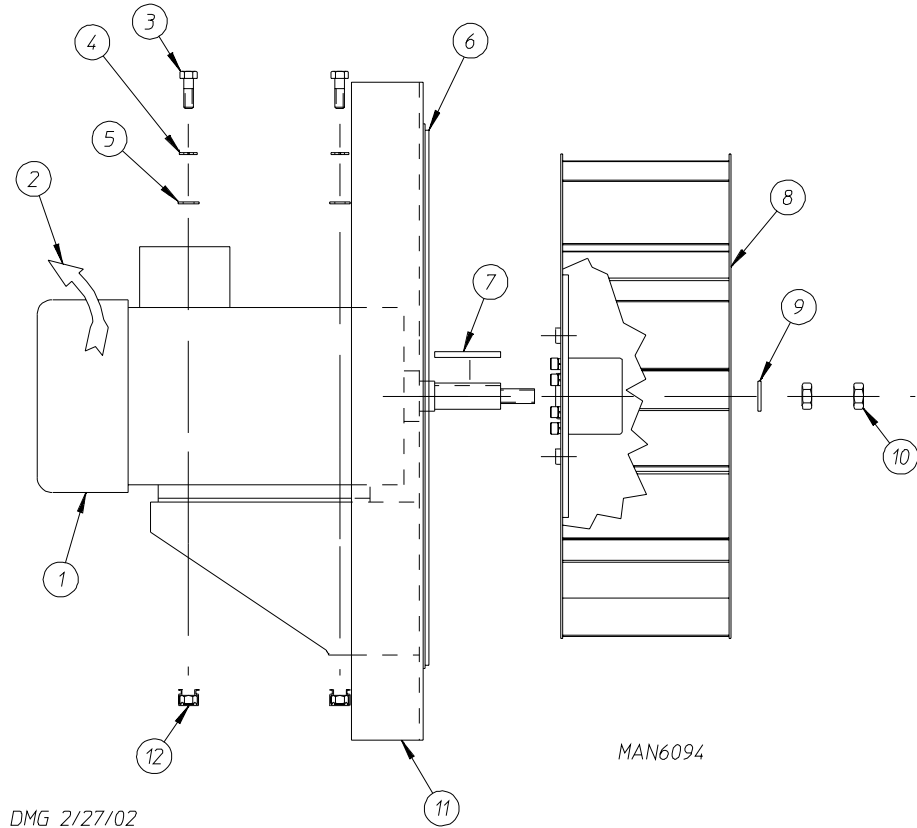
**IMPORTANT:** For voltages higher than 460V, contact the factory for correct part number of motor mount assembly.



MAN0492

<u>Illus. No.</u>	<u>Part No.</u>	<u>Qty.</u>	<u>Description</u>
1	820022	1	Temperature Sensor Bracket Assembly Complete (includes illus. nos. 1 through 10)
	331295	1	Temperature Sensor Bracket ONLY
2	154007	2	1/4" Tinnerman Push-On Fastener
3	880251	1	1/4" Temperature Sensor Probe Assembly (includes illus. nos. 2, 3, 8, 9, and 10)
4	152000	2	#6-32 Hex Nut
5	153010	2	#6 Star Washer
6	130112	1	225° Large Automatic Reset Thermostat ONLY
7	150000	2	#6-32 x 1/4" Round Head Machine Screw
8	121028	2	Insulated Terminal
9	122605	1	4-Pin Socket Connector ONLY
10	122701	4	Socket Terminal ONLY
11	122604	1	4-Pin Connector ONLY
12	122700	4	Pin Terminal ONLY
	122801	1	Pin/Socket Extraction Tool
13	150301	2	#8-18 x 7/16" Phillips Pan Head Screw





<u>Illus. No.</u>	<u>Part No.</u>	<u>Qty.</u>	<u>Description</u>
1	181043	1	3 hp Motor 208-230/380/460V 50/60 Hz
	100088	1	3 hp Motor 575V 60 Hz
2	112093	1	Red Rotational Label
3	150501	4	5/16-18 x 3/4" Hex Head Bolt
4	153002	4	5/16" Split Lock Washer
5	153001	4	5/16" Flat Washer
6	117604	4'	1/8" x 3/8" Neoprene Sponge Tape
7	100705	1	3/16" x 3/16" x 1-3/8" Key
8	802027	1	16" Impellor, 7/8" Bore 60 Hz
	802024	1	16" Impellor, 7/8" Bore 50 Hz
9	153065	1	1-1/2" O.S. Diameter x 1/2" I.S. Diameter Washer
10	152006	2	1/2-20 Left Hand Jam Nut
11	803561	1	Blower Motor Mount ONLY
	803562	1	208-230/460V 60 Hz Direct Blower Drive Motor Assembly (includes illus. nos. 1 through 12)
	803563	1	575V 60 Hz Direct Blower Drive Motor Assembly (includes illus. nos. 1 through 12)
	803564	1	380V 60 Hz Direct Blower Drive Motor Assembly (includes illus. nos. 1 through 12)
	803565	1	208/230/380/400/416V 50 Hz Direct Blower Drive Motor Assembly (includes illus. nos. 1 through 12)
12	154000	4	5/16-18 Self-Anchoring Retainer with Nut

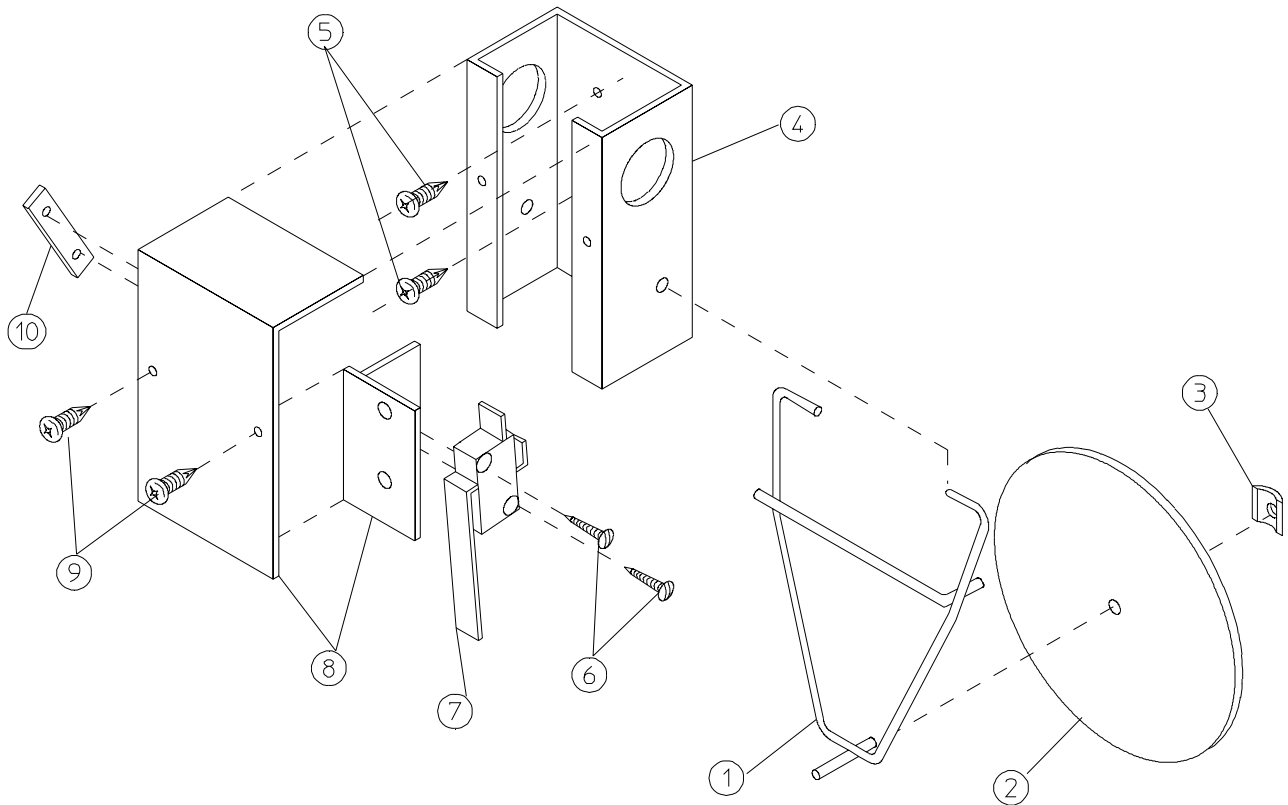


<u>Illus. No.</u>	<u>Part No.</u>	<u>Qty.</u>	<u>Description</u>
1	820201	1	Burner Box ONLY
2	142924	1	1" to 3/4" Reducing Coupling
3	331291	1	Pipe Bracket
4	150309	2	#10-16 x 1/2" Hex Head TEK Crimptite Screw
5	142807	1	3/4" x 40" Nipple
6	142854	1	3/4" x 3/4" Street Elbow
7	142601	1	3/4" Union
8	142710	1	3/4" x 4" Nipple
9	390125	1	Flat Gas Pipe Bracket
10	140026	1	Direct Spark Ignition (DSI) 3/4" 24V Redundant (natural gas) Gas Valve
	883999	1	Direct Spark Ignition (DSI) 3/4" 24V Redundant Liquid Propane (L.P.) Gas Valve
11	331088	1	Extended Pipe Bracket
12	152013	2	#6-32 Hex Nut
13	801048	1	Direct Spark Ignition (DSI) Johnson Module (3 Tries) with Data Label
14	141219	1	3-Port Manifold
15	140844	3	Burner Orifice
16	335031	1	Direct Spark Ignition (DSI) Mount Manifold Rest
17	141136	3	Burner Tube ONLY
18	331287	1	Burner Tube Support ONLY
19	153562	2	#6-32 x 3/4" Clinch Stud
20	331289	1	Burner Box Cover Plate
21	331290	1	Ignitor/Flame-Probe Sight Hole Disc
22	128915	1	Ignitor/Flame-Probe Assembly
23	128919	1	36" Ignitor Cable
24	151000	2	#6-32 Pal Nut
25	130201	1	330° Manual/Reset Hi-Limit
26	150001	2	#6-32 x 1/2" Phillips Round Head Machine Screw
27	821457	1	Hi-Limit Bracket
28	154004	1	Twin Speed Nut
29	802799	1	Sail Switch Cover and Bracket
30	122200	1	Sail Switch
31	150303	2	#4 x 3/4" Pan Head "A" Machine Screw
32	105500	1	Sail Switch Actuator Rod
33	319202	1	Sail Switch Damper
34	154002	1	1/8 Push-On Fastener
35	332256*	1	Liquid Propane (L.P.) Burner Baffle
36	330970	3	Burner Tube Extension Tag (Not Illustrated)
	884018	1	Complete Natural Gas Burner Box Assembly (includes illus. nos. 1 through 34 and 36)
	884017	1	Complete Liquid Propane (L.P.) Gas Burner Box Assembly (includes illus. nos. 1 through 36)

\*Liquid propane (L.P.) burner only



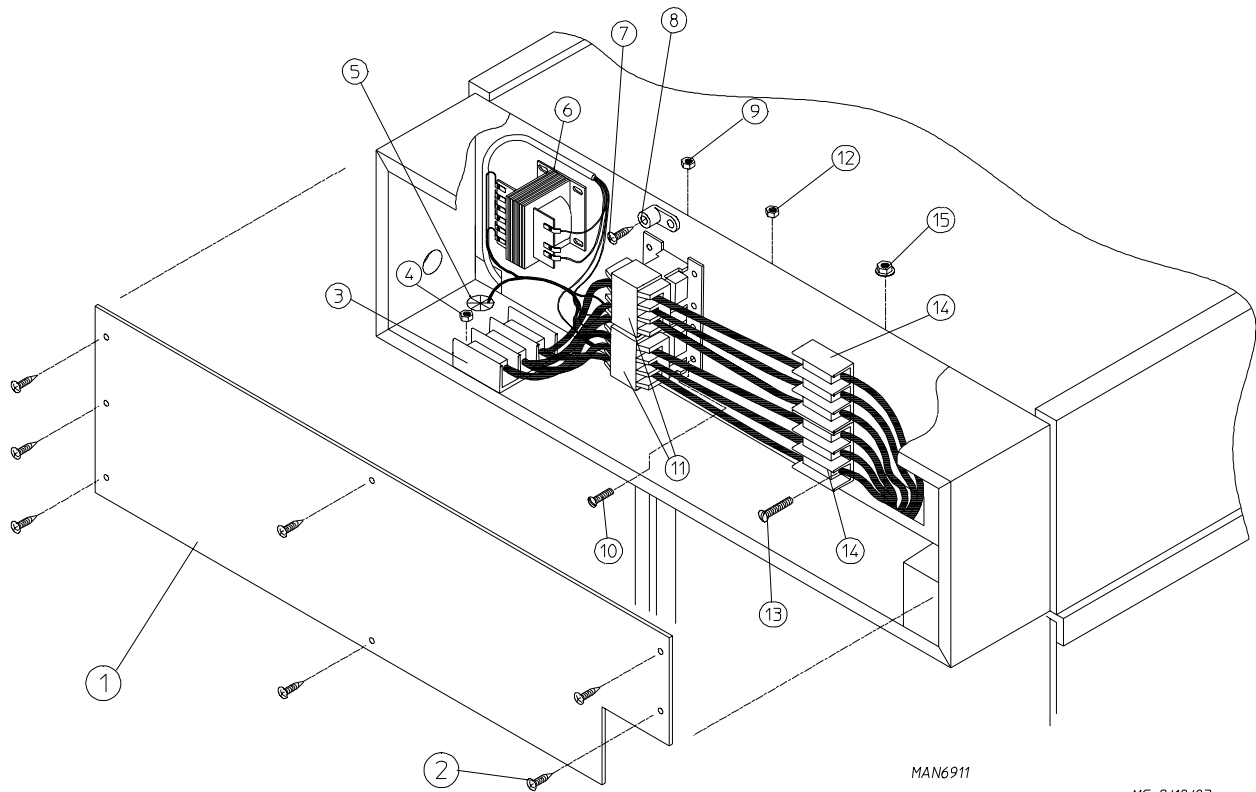
<u>Illus. No.</u>	<u>Part No.</u>	<u>Qty.</u>	<u>Description</u>
1	816103	1	Electric Oven Box ONLY
2	-----	18	Oven Coil Element (refer component to charts on <b>page 29</b> )
3	150301	2	#8-18 x 7/16" Phillips Pan Head TEK Screw
4	130400	1	290° Hi-Limit ONLY
5	150309	4	#10-16 x 1/2" Hex Head TEK Crimptite Screw
6	319200	1	Sail Switch Box
7	154004	1	Twin Speed Nut
8	802799	1	Sail Switch Box Cover
9	122200	1	Sail Switch ONLY
10	150303	2	#4 x 3/4" Pan Head "A" Machine Screw
11	105500	1	Sail Switch Actuator Rod
12	319202	1	Sail Switch Damper (flat)
13	154002	1	1/8" Push-On Fastener
14	150309	8	#10-16 x 1/2" Hex Head TEK Crimptite Screw
15	120081	36	Internal Ceramic Insulator
16	120080	36	External Ceramic Insulator
17	152008	72	#10-32 Hex Nut
18	121011	3'	Bus Bar (sold by the foot)
19	153009	36	#10 Star Washer
20	133100	21	#8 Rock Therm Connector
21	353222	1	Pipe Bracket
22	802760	1	Hi-Limit and Sail Switch Harness
23	153007	2	1/4" Lock Washer
24	150512	2	1/4-20 x 1/2" Long Bolt
25	819961	1	Burner Cover Assembly
26	331278	1	Right Front Oven Panel
27	331276	1	Left Front Oven Panel
28	156001	1	Caterpillar Crommet
29	331279	1	Oven Electrical Cover
	884016	1	Complete Electric Oven Assembly (includes illus. nos. 1 through 29)



MAN0440

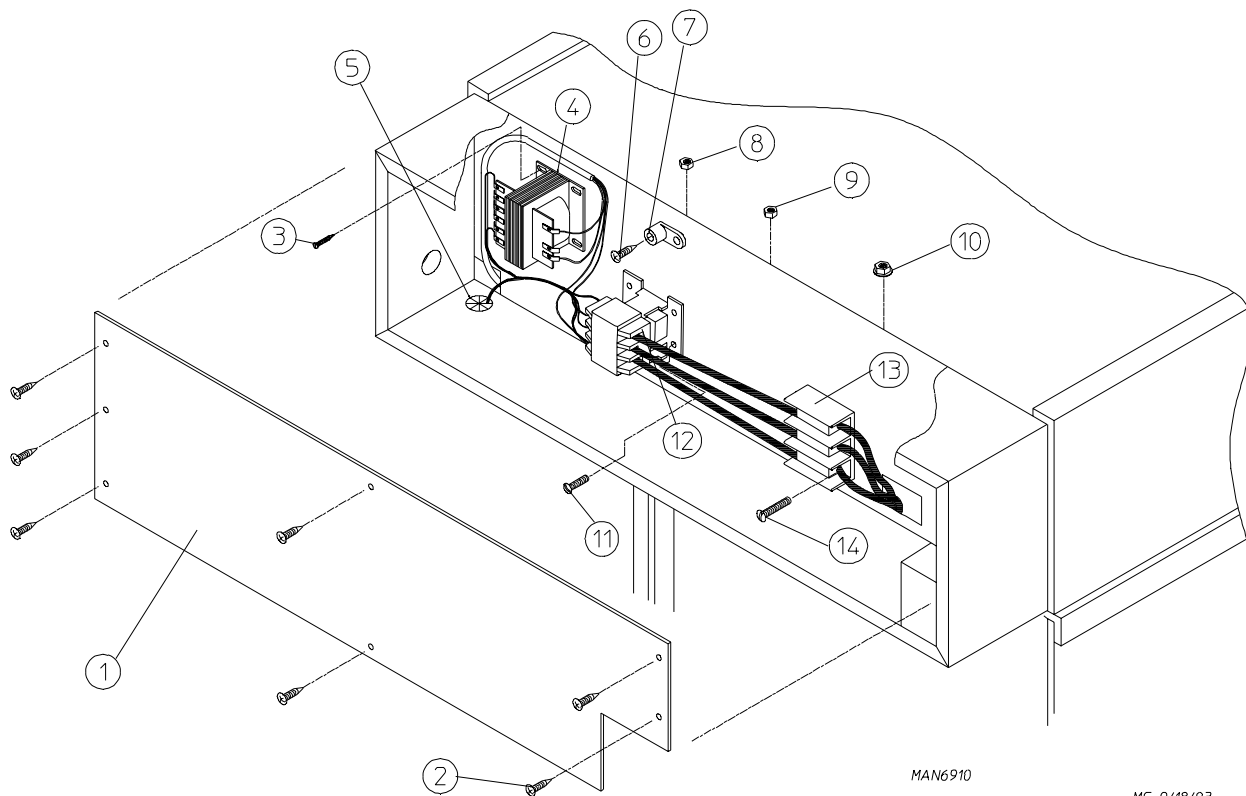
<u>Illus. No.</u>	<u>Part No.</u>	<u>Qty.</u>	<u>Description</u>
1	105500	1	Sail Switch Actuator Rod
2	319202	1	Sail Switch Damper (Flat)
3	154002	1	1/8" Push-On Fastener
4	802800	1	Sail Switch Box Cover and Bracket ONLY
	802801	1	Sail Switch Box Assembly Complete (includes illus. nos. 1 through 4 and 6 through 10)
5	150309	2	#10-16 x 1/2" Hex Head TEK Crimptite Screw
6	150303	2	#4 x 3/4" Pan Head "A" Machine Screw
7	122200	1	Sail Switch ONLY
8	802799	1	Sail Switch Box Cover and Bracket ONLY
9	150309	2	#10-16 x 1/2" Phillips Round Head Screw
10	154004	1	Twin Speed Nut

For 208-240V - 3Ø - 50/60 Hz Models ONLY



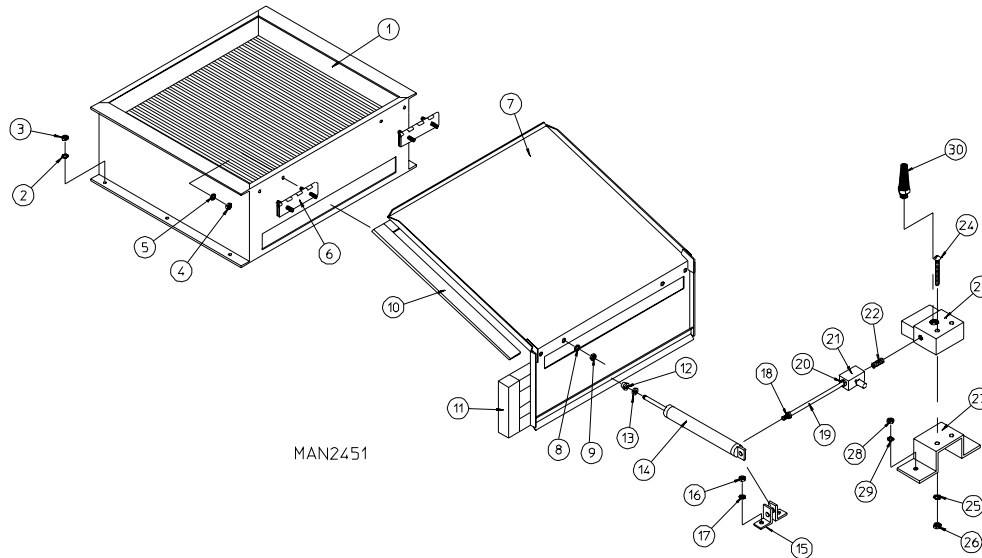
<u>Illus. No.</u>	<u>Part No.</u>	<u>Qty.</u>	<u>Description</u>
1	331328	1	Electric Oven Relay Box Cover
2	150301	12	#8-18 x 7/16" Phillips Pan Head TEK Screw
3	120710	1	Power Distribution Block
4	151001	2	#8-32 Pal Nut
5	121400	2	Universal Bushing
6	132004	1	Transformer
7	150108	3	#8-32 x 1/2" Pan Head Machine Screw
8	121010	1	L-70 Terminal Lug
9	151001	1	#8-32 Pal Nut
10	150108	1	#8-32 x 1/2" Pan Head Machine Screw
11	131358	2	120-amp 24V Contactor
12	151001	3	#8-32 Pal Nut
13	150521	2	1/4-20 x 2" Carriage Bolt
14	120706	1	Power Distribution Block
15	152014	2	1/4-20 Free Spin Wash Nut

For 380-416/480V - 3Ø - 50/60 Hz Models ONLY



<u>Illus. No.</u>	<u>Part No.</u>	<u>Qty.</u>	<u>Description</u>
1	331328	1	Electric Oven Relay Box Cover
2	150301	12	#8-18 x 7/16" Phillips Pan Head TEK Screw
3	150300	3	#10 x 1/2" Hex Washer TEK Screw
4	132004	1	Transformer (for <b>ALL</b> Electric Models - 380V through 480V)
5	121400	2	Universal Bushing
6	150108	3	#8-32 x 1/2" Pan Head Machine Screw
7	121010	1	L-70 Terminal Lug
8	151001	1	#8-32 Pal Nut
9	151001	3	#8-32 Pal Nut
10	152014	2	1/4-20 Free Spin Wash Nut
11	150108	1	#8-32 x 1/2" Pan Head Machine Screw
12	131358	1	120-amp 24V Contactor
13	120706	1	Power Distribution Block
14	150501	2	1/4-20 x 2" Carriage Bolt

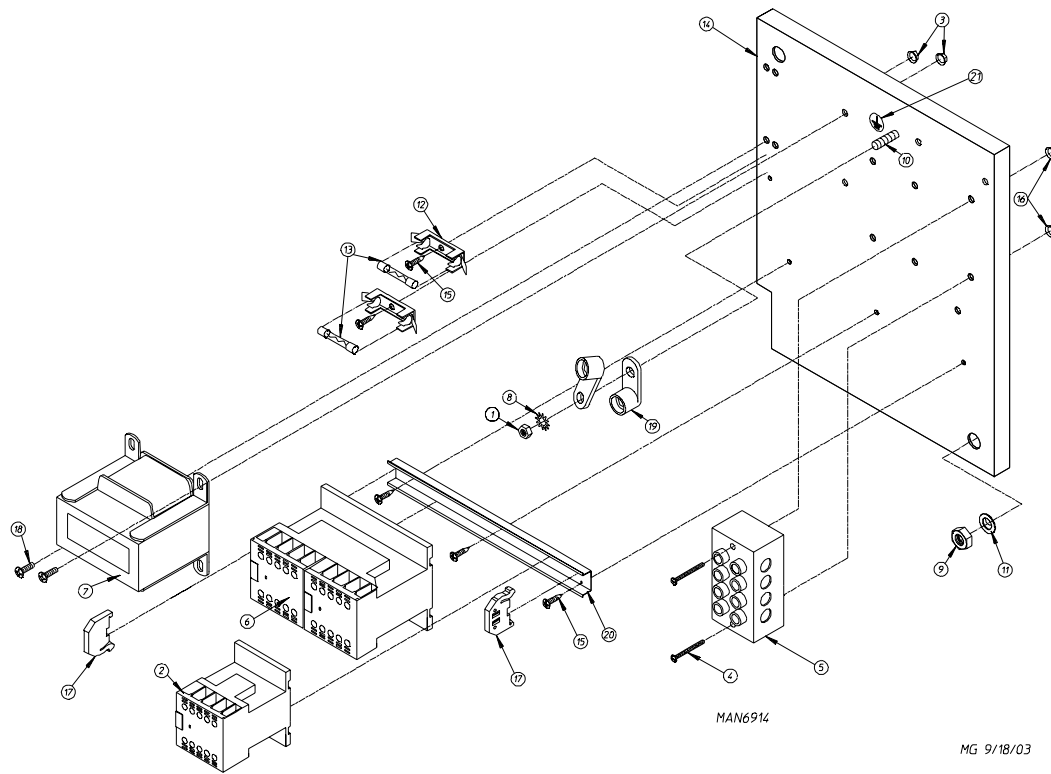




MAN2451

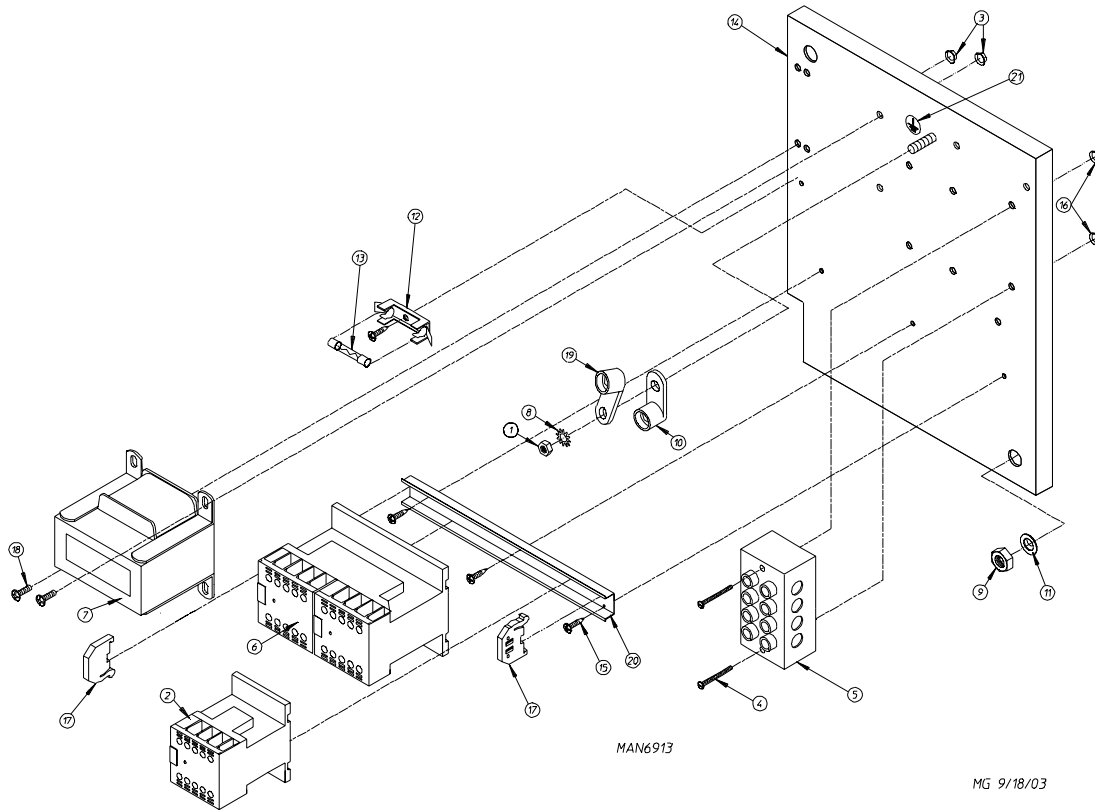
<u>Illus. No.</u>	<u>Part No.</u>	<u>Qty.</u>	<u>Description</u>
1	165012	1	Steam Coil Assembly
	165019	1	Steel Steam Coil Assembly (Option)
2	153002	6	5/16" Lock Washer
3	152004	6	5/16-18 Hex Nut
4	152002	4	1/4-20 Hex Nut
5	153007	4	1/4" Lock Washer
6	820321	2	Steam Damper Hinge Assembly
7	803415	1	Steam Damper Assembly (includes illus. nos. 7, 10, and 11)
8	153007	4	1/4" Lock Washer
9	152002	4	1/4-20 Hex Nut
10	115995	108	Steam Damper Gasket (sold by the inch)
11	102350	1	Gasket (68-1/2" length)
12	151007	1	7/16-20 Stainless Steel Acorn Nut
13	152007	1	7/16-20 Hex Nut
14	100499	1	1-1/4" Bore x 3" Stroke Piston
15	100500	1	Piston Support Bracket
16	152002	4	1/4-20 Hex Nut
17	153007	4	1/4" Lock Washer
18	100472	1	1/4" x 1/8" Connector
19	143110	1	1/4" Tubing (sold by the foot)
20	100472	1	1/4" x 1/8" Connector
21	100496	1	1/8" Needle Valve
22	143238	1	1/8" Close Nipple
23	100498	1	3-Way Micro Valve - 24V
24	150002	2	#6-32 x 1" Round Head Machine Screw
25	153010	2	#6 Star Washer
26	152000	2	#6-32 Hex Nut
27	330987	1	Micro Valve Support Bracket
28	152002	2	1/4-20 Hex Nut
29	153007	2	1/4" Lock Washer
30	100520	1	1/8" N.P.T. Silencer (muffler)

For 208-240V Gas and Steam Models ONLY



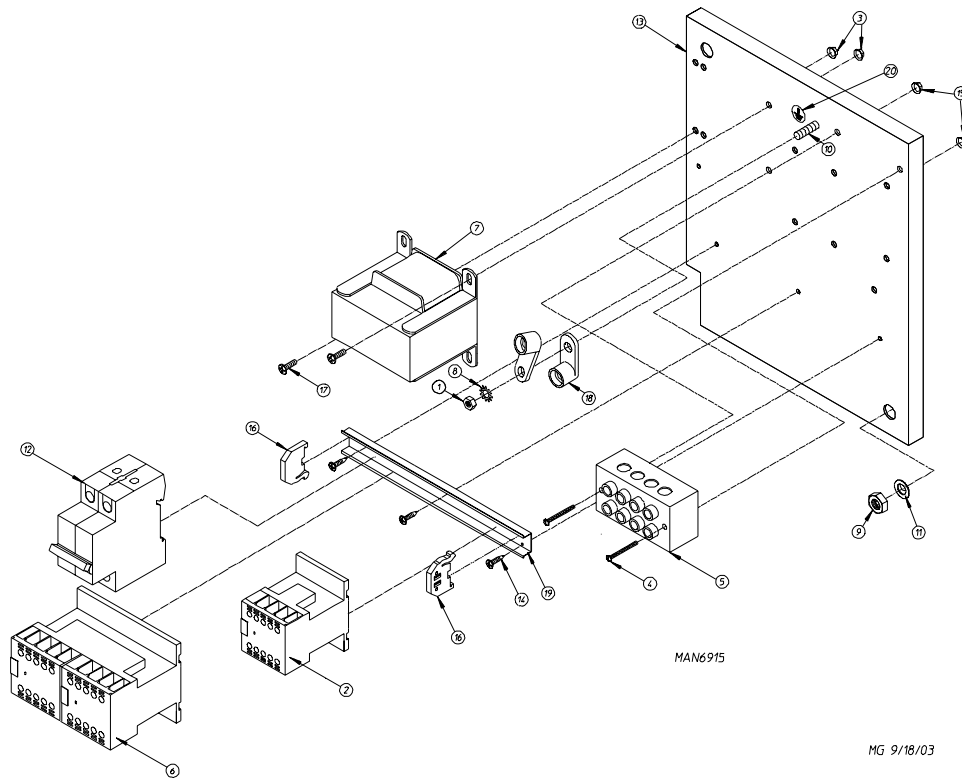
<u>Illus. No.</u>	<u>Part No.</u>	<u>Qty.</u>	<u>Description</u>
1	152002	1	1/4-20 Hex Nut
2	132514	1	3Ø Contactor with Arc Supressor
3	151001	2	#8-32 Pal Nut
4	150009	2	#6-32 x 1-1/2" Slotted Round Head Machine Screw
5	120701	1	4-Position Power Distribution Block
6	132497	1	Reversing Contactor with Arc Supressor
7	822764	1	208-240V Transformer Assembly
8	153021	1	1/4" Exterior/Interior Shake Proof Washer
9	152004	2	5/16-18 Hex Nut
10	153525	2	1/4-20 x 1" Self-Clinching Stud
11	153002	2	5/16" Lock Washer
12	136008	2	Fuse Block/Strip Holder ONLY
13	136057	2	1/2-amp (Slo-Blo) Fuse
14	332346	1	Relay Panel
15	150301	4	#8-18 x 7/16" Phillips Pan Head TEK Screw
16	151000	2	#6-32 Pal Nut
17	120774	2	End Stop for Din 35 Rail
18	150108	2	#8-32 x 1/2" Pan Head Machine Screw
19	121010	1	L-70 14-4 Terminal Lug
20	120768	7-3/4"	35 x 15mm Din Rail
21	112075	1	Ground Label
	884013	1	Complete Reversing Relay Panel Assembly (includes illus. nos. 1 through 21)

For 380/400V Gas and Steam Models ONLY



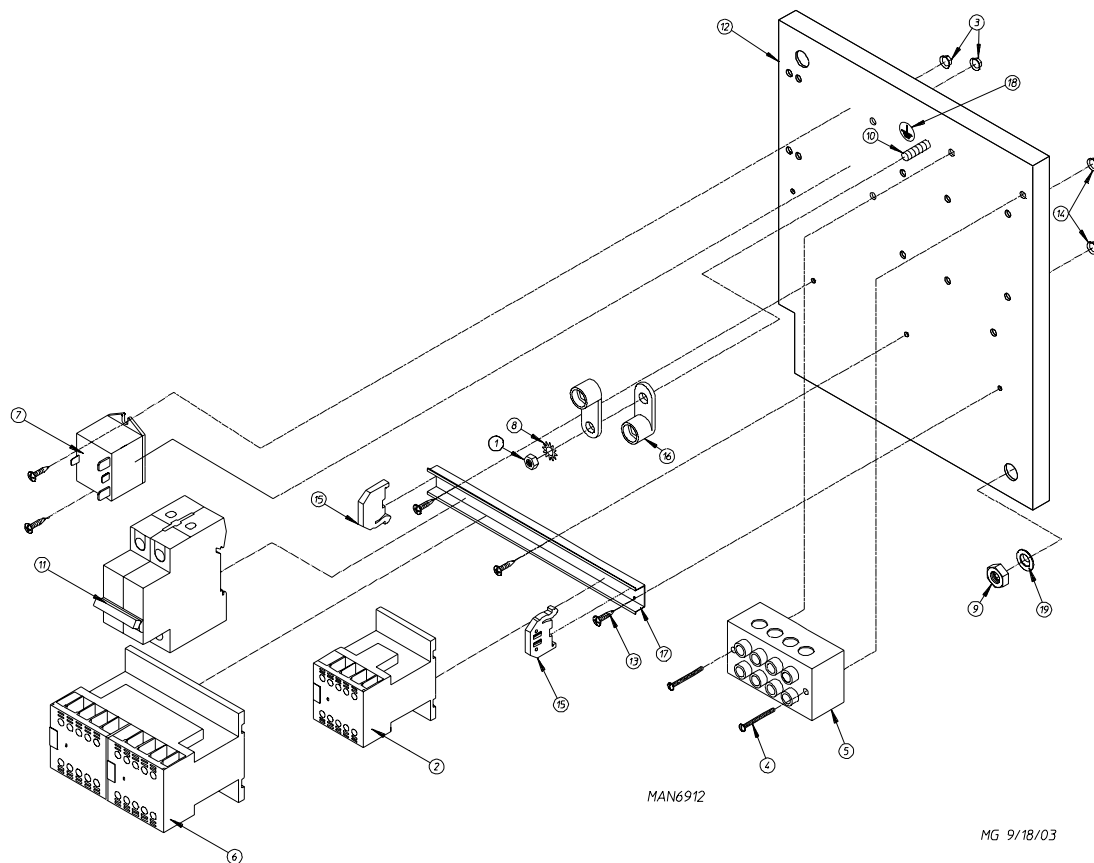
<u>Illus. No.</u>	<u>Part No.</u>	<u>Qty.</u>	<u>Description</u>
1	152002	1	1/4-20 Hex Nut
2	132514	1	3ø Contactor with Arc Suppressor
3	151001	2	#8-32 Pal Nut
4	150009	2	#6-32 x 1-1/2" Slotted Round Head Machine Screw
5	120701	1	4-Position Power Distribution Block
6	132497	1	Reversing Contactor with Arc Suppressor
7	830211	1	380-400V Transformer Assembly
8	153021	1	1/4" Exterior/Interior Shake Proof Washer
9	152004	1	5/16-18 Hex Nut
10	121012	1	Ground Lug
11	153002	1	5/16" Lock Washer
12	136008	1	Fuse Holder
13	136057	1	1/2-amp (Slo-Blo) Fuse
14	332346	1	Relay Panel
15	150301	4	#8-18 x 7/16" Phillips Pan Head TEK Screw
16	151000	2	#6-32 Pal Nut
17	120774	2	End Stop for Din 35 Rail
18	150108	2	#8-32 x 1/2" Pan Head Machine Screw
19	121010	1	L-70 Ground Lug
20	120768	7-3/4"	35 x 15mm Din Rail
21	112075	1	Ground Label
	884014	1	Reversing Relay Panel Assembly Complete (includes illus. nos. 1 through 21)

For 460/480V Gas and Steam Models ONLY

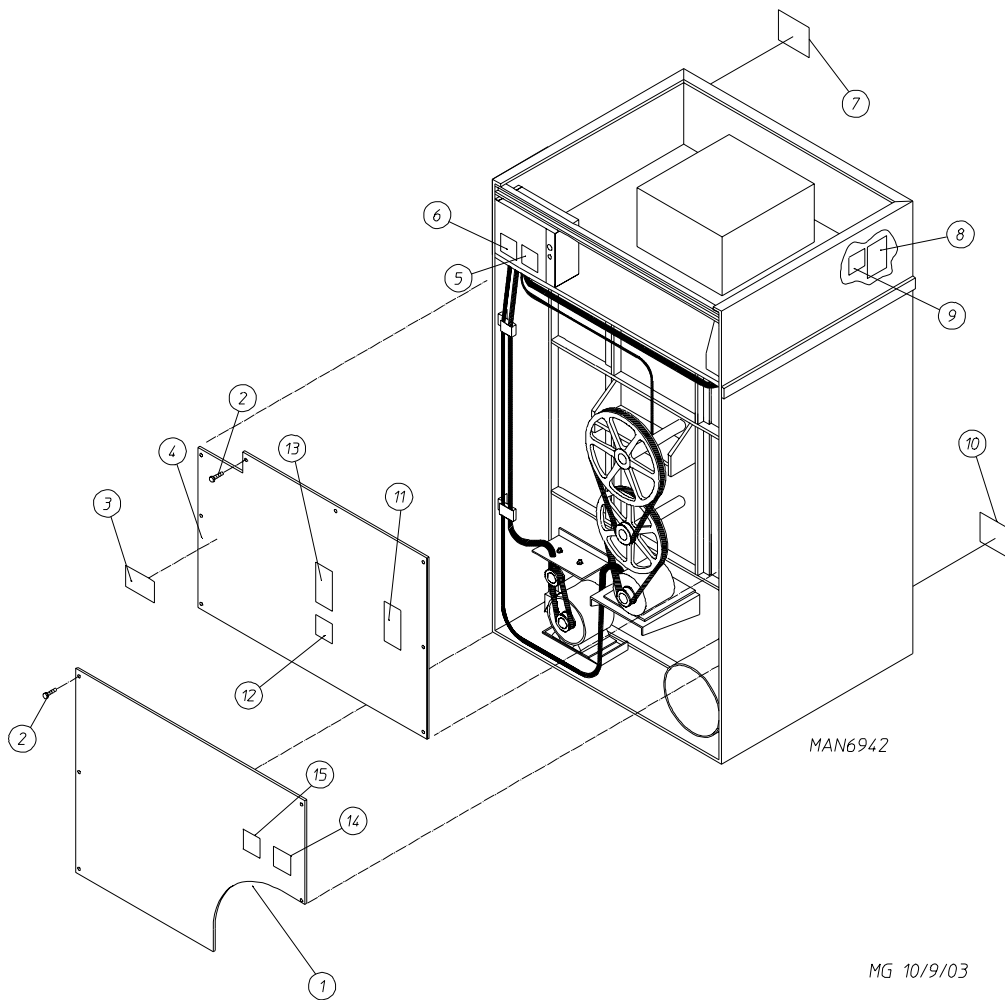


<u>Illus. No.</u>	<u>Part No.</u>	<u>Qty.</u>	<u>Description</u>
1	152002	1	1/4-20 Hex Nut
2	132514	1	3Ø Contactor with Arc Suppressor
3	151001	2	#8-32 Pal Nut
4	150009	2	#6-32 x 1-1/2" Slotted Round Head Machine Screw
5	120701	1	4-Position Power Distribution Block
6	132497	1	Reversing Contactor with Arc Suppressor
7	830226	1	460-480V Transformer Assembly
8	153021	1	1/4" Exterior/Interior Shake Proof Washer
9	152004	2	5/16-18 Hex Nut
10	153525	1	1/2-20 x 1" Self-Clinching Stud
11	153002	2	5/16" Lock Washer
12	135501	1	Double-Pole 1-amp Circuit Breaker
13	332346	1	Relay Panel
14	150301	4	#8-18 x 7/16" Phillips Pan Head TEK Screw
15	151000	2	#6-32 Pal Nut
16	120774	2	End Stop for Din 35 Rail
17	150108	2	#8-32 x 1/2" Phillips Pan Head Machine Screw
18	121010	1	L-70 Ground Lug
19	120768	8-1/4"	35 x 15mm Din Rail
20	112075	1	Ground Label
	884015	1	Complete Reversing Relay Panel Assembly (includes illus. nos. 1 through 20)

For Electric Models ONLY



<u>Illus. No.</u>	<u>Part No.</u>	<u>Qty.</u>	<u>Description</u>
1	152002	1	1/4-20 Hex Nut
2	132514	1	3ø Contactor with Arc Supressor
3	151001	2	#8-32 Pal Nut
4	150009	2	#6-32 x1-1/2" Phillips Pan Head Machine Screw
5	120701	1	4-Position Terminal Block
6	132497	1	Reversing Contactor with Arc Supressor
7	131932	1	Relay
8	153021	1	1/4" Exterior/Interior Shake Proof Washer
9	152004	1	5/16-18 Hex Nut
10	153525	2	1/4-20 x 1" Self-Clinching Stud
11	135501	1	Double-Pole Circuit Breaker
12	332346	1	Relay Panel
13	150301	7	#8-18 x 7/16" Phillips Head TEK Screw
14	151000	2	#6-32 Pal Nut
15	120774	2	End Stop for Din 35 Rail
16	121010	2	L70 Terminal Lug
17	120768	7-3/4"	35 x 15mm Din Rail
18	112075	1	Ground Label
19	153002	2	5/16" Lock Washer
	884012	1	Complete Reversing Relay Panel Assembly (includes illus. nos. 1 through 19)



MG 10/9/03

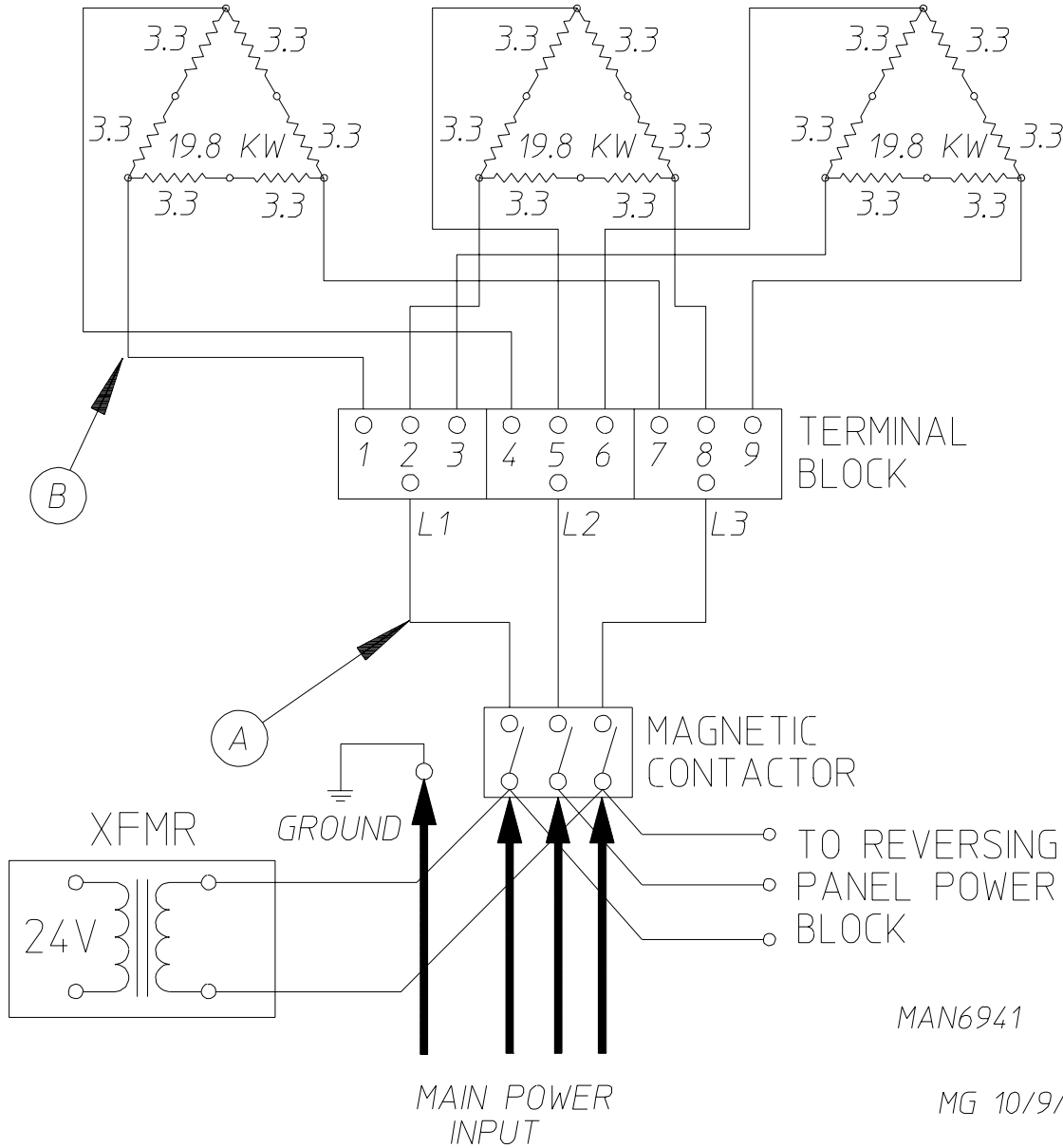
<u>Illus. No.</u>	<u>Part No.</u>	<u>Qty.</u>	<u>Description</u>
1	354000	1	Lower Back Guard (for Gas Models and Electric Models)
	354003	1	Lower Back Guard (for Steam Models Only)
2	150301	12	#8-18 x 7/16" Phillips Pan Head TEK Screw
3	112046	1	"Important for Computer Ground" Label
4	813029	1	Top Back Guard
5	114005	1	"DANGER - Hot" Label
6	114007	1	"DANGER - High Voltage" Label
7	114006	1	"WARNING - Fire Hazards" Label
8	114043	1	"Phase 7.2.2 Non-Coin Programming Location" Label
9	114530	1	"Phase 7 A-B Factor" Label
10	112280	1	"Clean Lint Screen" Label
11	112229	1	"Installation Instructions" Label
12	114004	1	"CAUTION - Rotating Parts" Label
13	112519	1	"Routine Maintenance Schedule" Label
14	114008	1	"WARNING - Fumes" Label
15	114001	1	"CAUTION - Exhaust/Lint Screen" Label

<b>60 kW Oven</b>	<b>Volts</b>		480	
	<b>Phase</b>		3ø	
	<b>Wire</b>		3 or 4	
	<b>Oven Assy. Part No.</b>		884008	
	<b>Elements</b>	<b>Qty.</b>	18	
		<b>Size</b>	3.3 kW	
		<b>Part No.</b>	120076	
	<b>Oven Wire</b>	<b>Qty*</b>	6'	37'
		<b>Size</b>	#2	#8
		<b>Part No.</b>	133302	133100
	<b>Terminal Lug</b>	<b>Qty.</b>	18	
<b>Part No.</b>		121032		
<b>Bus Bar Part No. 121011*</b>		11'		

\* Sold by the foot.

<b>72 kW Oven</b>	<b>Volts</b>	208	230/240	380	400	480						
	<b>Phase</b>	3ø	3ø	3ø	3ø	3ø						
	<b>Wire</b>	3	3	3 or 4	3 or 4	3 or 4						
	<b>Oven Assembly Part No.</b>	884003	884004	884007	884006	884005						
	<b>Elements</b>	<b>Qty.</b>	18	18	18	18	18					
		<b>Size</b>	4 kW	4 kW	4 kW	4 kW	4 kW					
		<b>Part No.</b>	120010	120011	120073	120010	120011					
	<b>Oven Wire</b>	<b>Qty*</b>	6'	29'	6'	29'	3'	29'	3'	37'	3'	37'
		<b>Size</b>	#2	#8	#2	#8	#2	#8	#2	#8	#2	#8
		<b>Part No.</b>	133302	133100	133302	133100	133302	133100	133302	133100	133302	133100
	<b>Terminal Lug</b>	<b>Qty.</b>	18	18	9	18	10	18	18	18	18	18
<b>Part No.</b>		121032	121032	121010	121032	121010	121032	121010	121032	121010	121032	
<b>Bus Bar Part No. 121011*</b>		2'	2'	3'	3'	3'	3'	3'	3'	3'	3'	

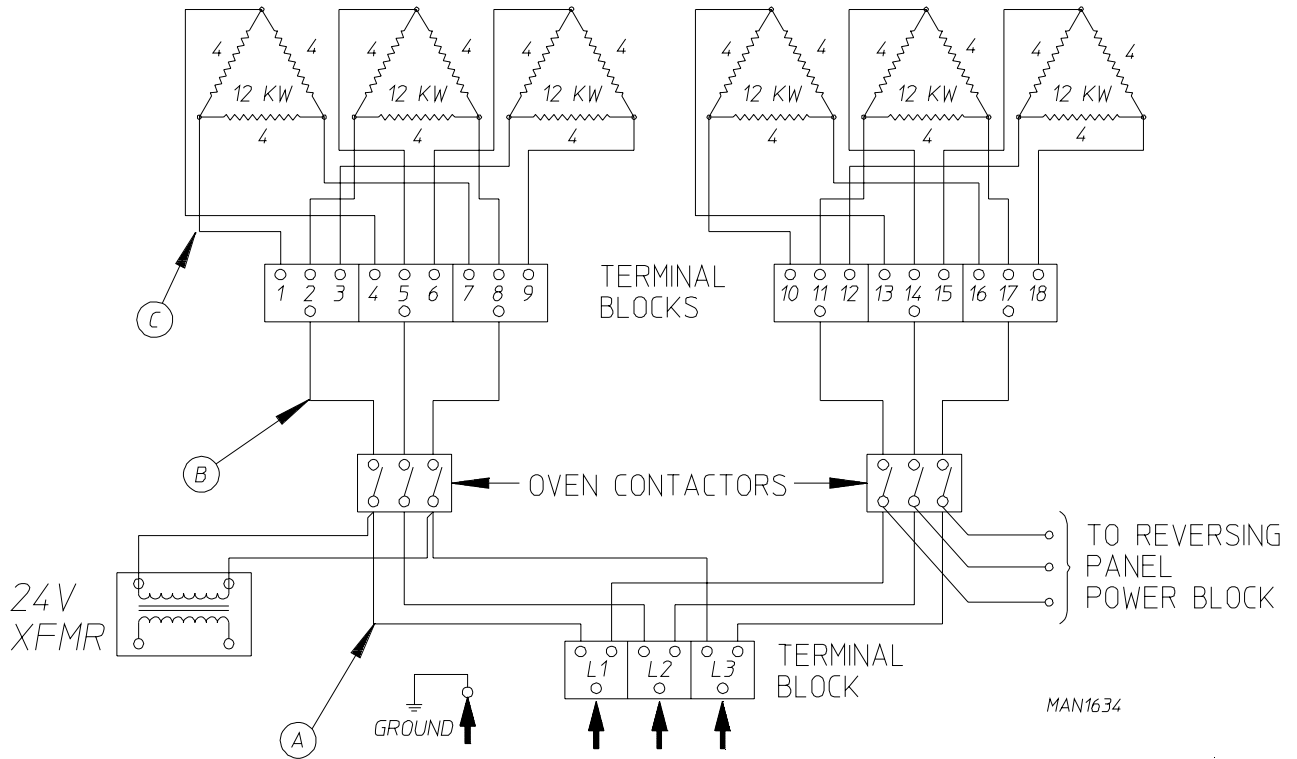
\* Sold by the foot.



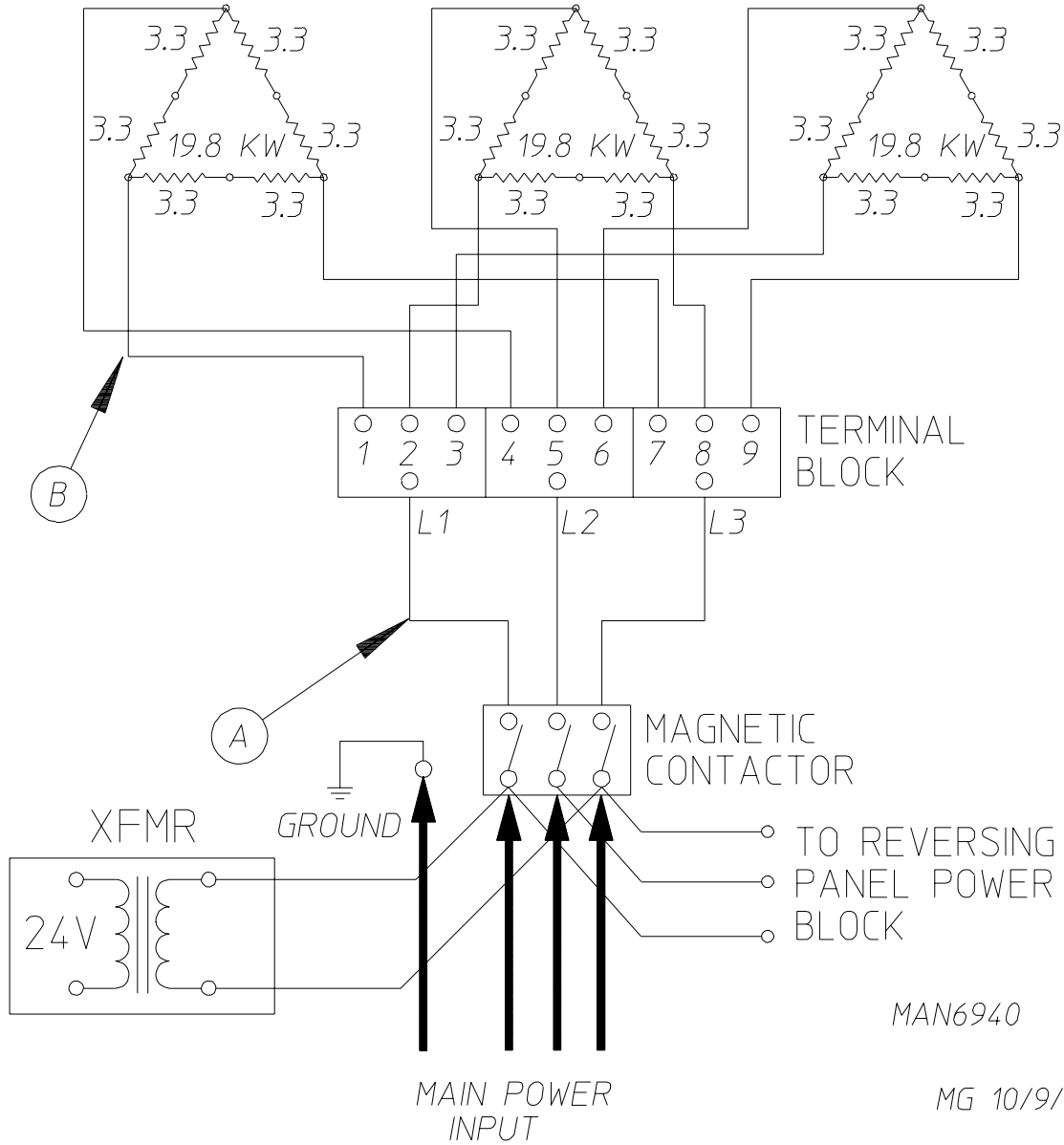
Electric Service	Qty. Elements	Element Part Number	Oven Amps	Wire Size		Contactor	24 VAC Step Down Transformer
				A	B		
480v / 3 $\phi$ / 3, 4w	18	120076	72	2	8	131358	132004



72 kW - 208-240V - 3Ø - 50/60 Hz

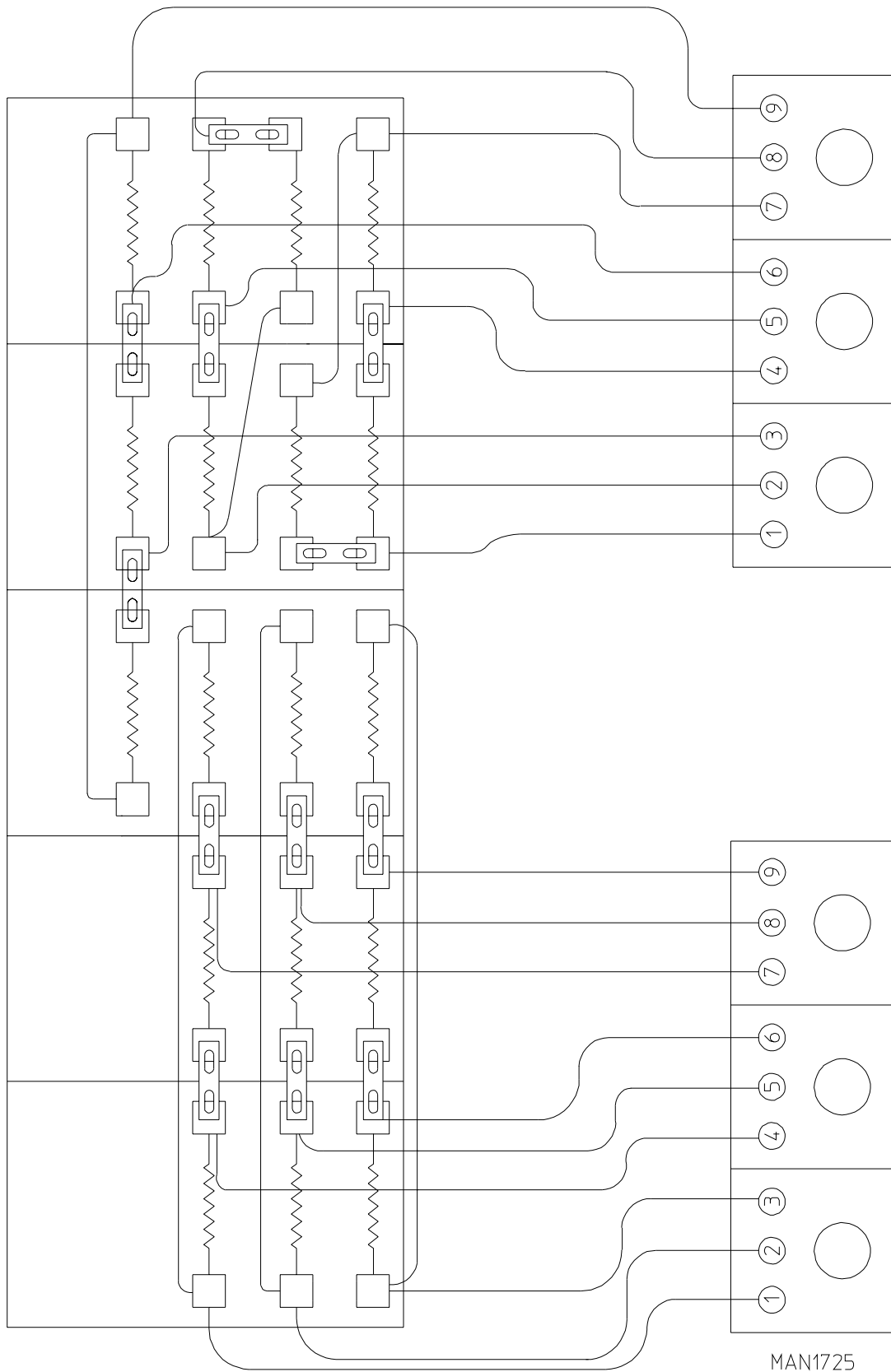


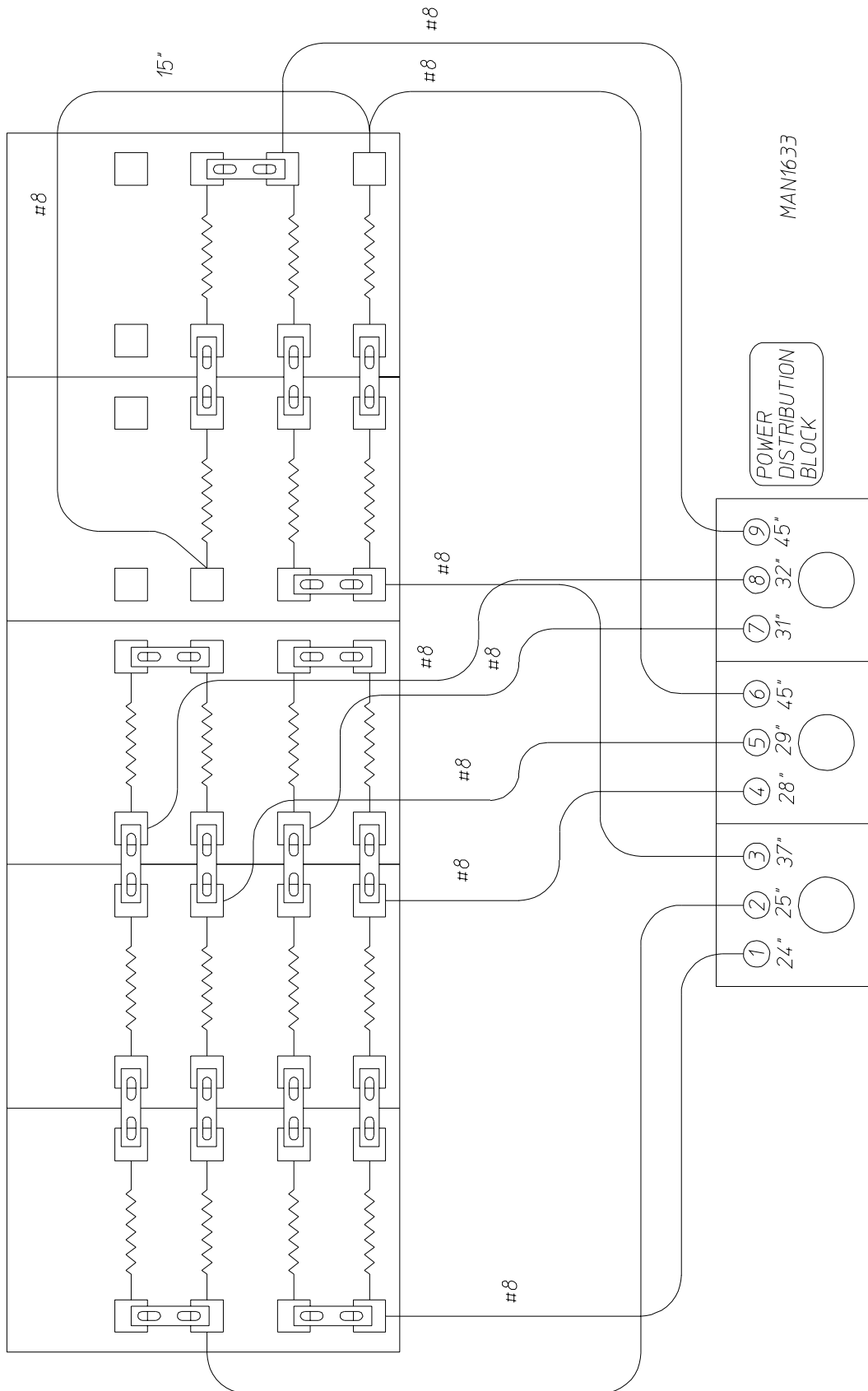
Electric Service	Qty. Elements	Element Part Number	Oven Amps	Wire Size			Contactor	24 VAC Step Down Transformer
				A	B	C		
208v / 3Ø / 3, 4w	18	120010	200	2	2	8	131358	132087
240v / 3Ø / 3, 4w	18	120011	174	2	2	8	131358	132087

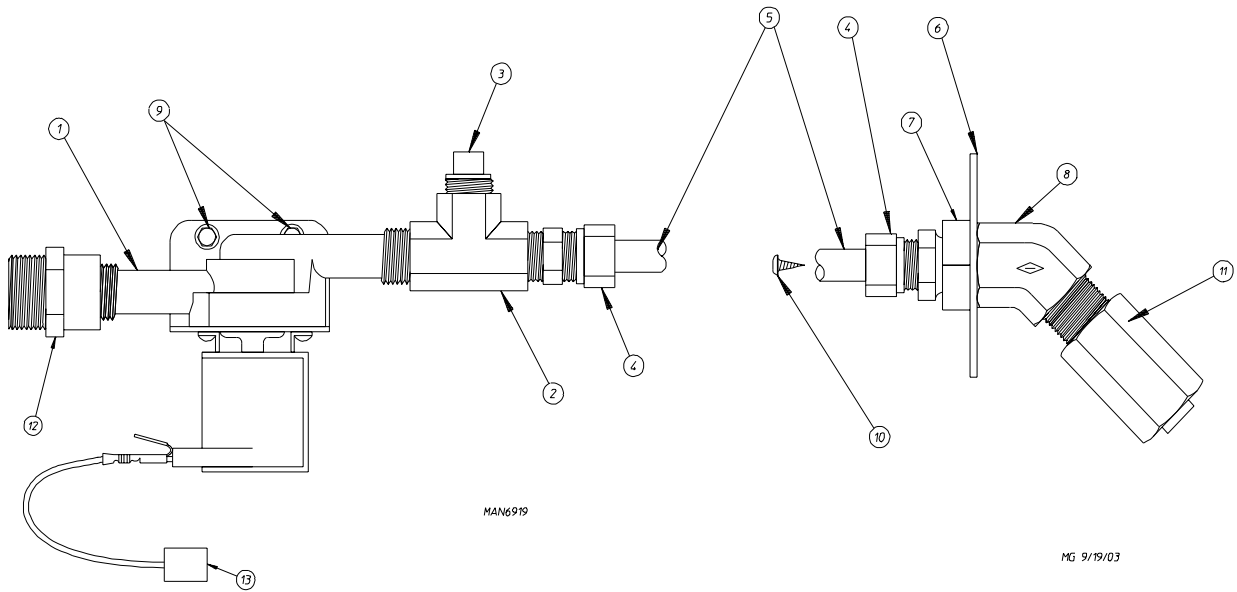


Electric Service	Qty. Elements	Element Part Number	Oven Amps	Wire Size		Contactor	24 VAC Step Down Transformer
				A	B		
380v / 3 $\phi$ / 3, 4w	18	120073	110	2	8	131358	132004
400v / 3 $\phi$ / 3, 4w	18	120010	104	2	8	131358	132004
480v / 3 $\phi$ / 3, 4w	18	120011	87	2	8	131358	132004

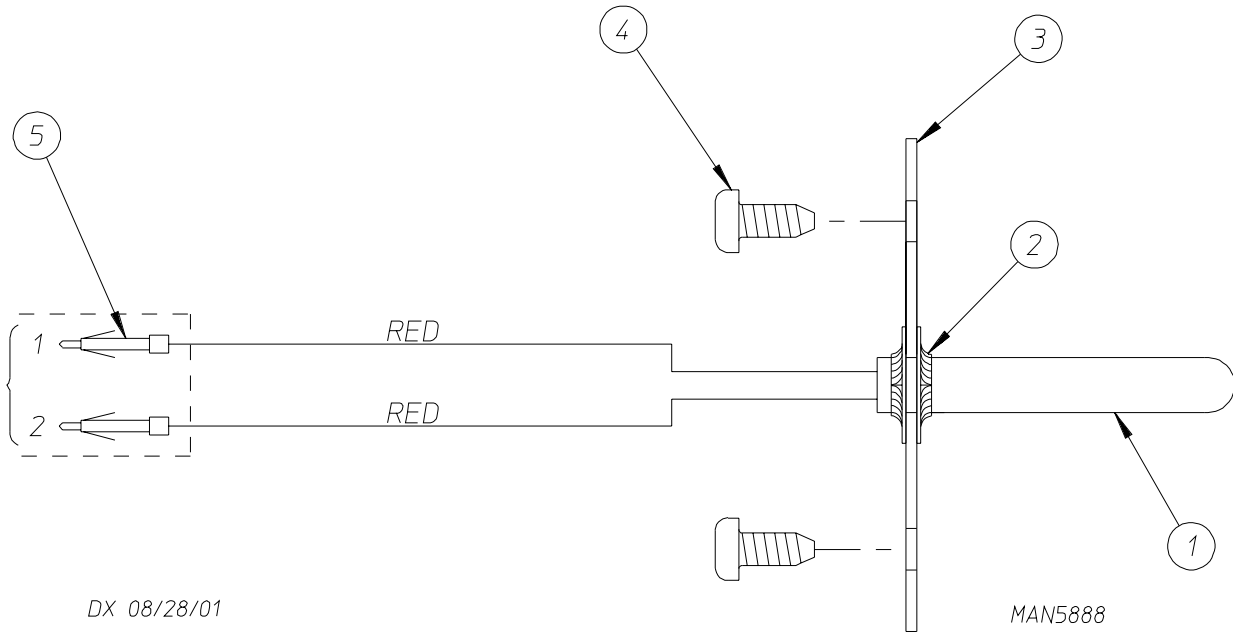
72/80 kW - 208-240V - 3 $\phi$  - 50/60 Hz







<u>Illus. No.</u>	<u>Part No.</u>	<u>Qty.</u>	<u>Description</u>
1	165114	1	Fire Suppression System (F.S.S.) Solenoid Valve 24V 50/60 Hz
2	143220	1	3/8" F.P.T. Brass Tee
3	143251	1	3/8" M.P.T. Brass Plug
4	143208	2	3/8" Comp x 3/8" M.P.T. Brass Connector
5	143108	1	20" Stainless Steel Flexible Tubing
6	311588	1	Sprinkler Head Mounting Plate
7	143303	1	3/8" N.P.T. Brass Lock Nut
8	143301	1	3/8" Brass 45° Elbow
9	152001	2	#8-32 x 3/8" Hex Nut
10	150301	2	#8-18 x 7/16" Phillips Pan Head TEK Screw
11	143581	1	3 GPM 3/8" F.P.T. Spray Nozzle
12	143025	1	3/8" N.P.T. Nylon Hose Adapter
13	824081	1	RC Network Assembly
	884001	1	Complete Fire Suppression System (F.S.S.) Solenoid Assembly (includes illus. nos. 1 through 13)



<u>Illus. No.</u>	<u>Part No.</u>	<u>Qty.</u>	<u>Description</u>
1	822752	1	Fire Suppression System (F.S.S.) Temperature Probe Assembly (includes illus. nos. 1 through 5)
2	154007	2	Push-On Fastener
3	390390	1	Sensor Bracket ONLY
4	150301	2	#8-18 x 7/16" Phillips Pan Head TEK Screw
5	122647	1	Connector ONLY
	122700	2	Pins

---

<u>Part No.</u>	<u>Description</u>
112098	“Check Rotation” Label
112025	“CAUTION - Disconnect Supply” Label
114046	“Manual Hi-Limit Reset” Label
114076	“Grease Instruction” Label
120100	3/8” Straight (BX) Connector
120300	3/8” x 45° (BX) Connector
120400	3/8” Red Jacket (BX) Insulator
120500	3/8” Jiffy Clip (BX Retainer Clip)
120600	3/8” Greenfield (BX)
120800	1/4” In-Line Connector
120802	Red Butt Connector
120902	#74B Wire Nut
120903	Crimp-On Wire Nut
121014	1/4” Insulated (female) Terminal
121026	Tab Receptacle Combination
121499	5-1/2” Harness Tie
121500	8” Harness Tie
122503	Harness Tie Mounting Clip
122804	Manometer (water column test gauge)
121507	Snap Wire Tie Screw Mount
880200	Electrical Terminal (assortment) Kit

